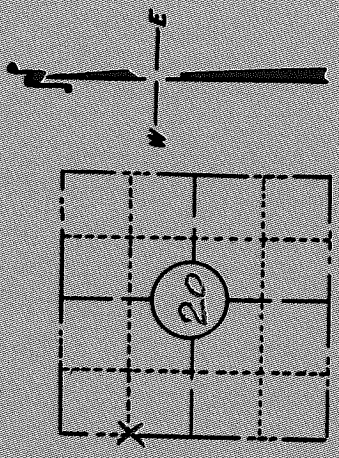


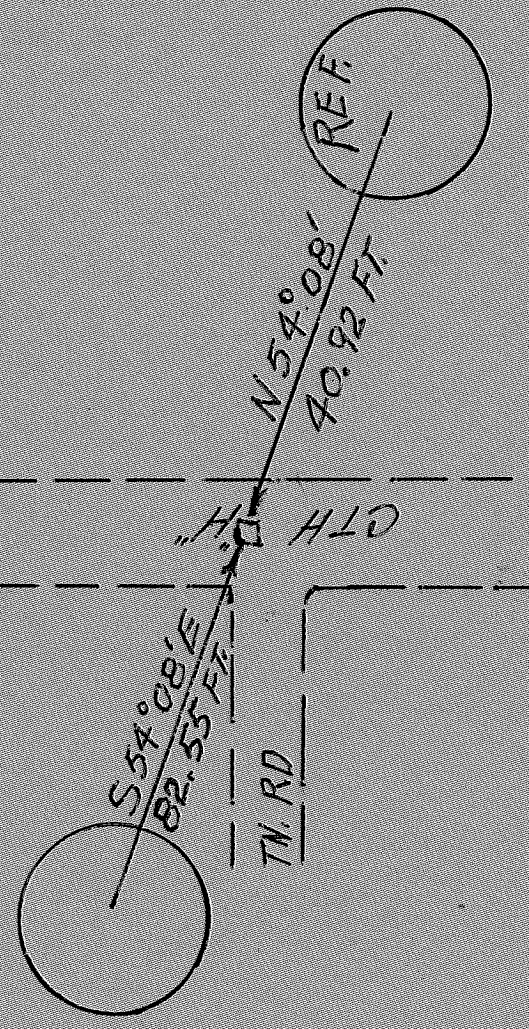
PRESERVATION OF LANDMARKS

SECTION 59,635(7) WISCONSIN STATUTES
 COUNTY Lafayette
 TOWN Parrish
 HIGHWAY CTH "H"
 SECTION NO. 19-20
 T. 34 N., R. 9 E.
 TYPE OF LANDMARK Via Corner
 LOCATION INDICATED ON SKETCH X



LOCATION SKETCH

Prod. 50714 (B)



Concrete Reference Monuments have been placed as witness to a tie corner at the point indicated prior to the reconstruction of County Trunk Highway "H"

This space for copy of field notes or ties to the above described landmarks

Field notes or records filed in book no. 162-163
 at the State Highway Comm. of Wisconsin office.
 City of Rhinelander, Oneida County.
 Located or established by J. Martinson Aug 1964
 Title Prod. Eng.

County Clerk's Office _____ County, Wis. } ss
 Received for record _____, 19____

Copy sent to County Surveyor _____, 19____

County Clerk