

4340920 2000 2014

# U.S. PUBLIC LAND SURVEY MONUMENT RECORD

(Prepared and as required by S. A-E 7.08 WI Administrative Code)

The EAST 1/4 corner of Section 20, T. 34 N., R. 09 E., Langlade County, WI  
Corner was (check all that apply)

- Restored through acceptance of an obliterated evidence location.
- Restored through acceptance of a found perpetuated location.
- Determined to be lost and re-established through proportionate methods. (show bearings and distances to PLSS corners used for proportioning.)
- Restored/recovered/re-established in a location that differs from a previously established position. (Show difference in plan view below.)
- Check here if additional information is shown on the reverse side of this form.

**Describe record evidence, recovered physical evidence, occupational evidence, testimonial evidence, and all other evidence considered in the recovery/restoration of the corner.**

1864 - Government Surveyor, J.L. Nowlin set original 1/4 section post and marked bearing trees, Hemlock 8", S 42° E, 7 links, and Hemlock 6", S 36° W, 2 links.

1910 - Surveyor Brooks found original hemlock standing. "new hem by Brooks - 09."

1930's Resurvey - Langlade County does not have the field notes of this resurvey, but does have the plat. The 1937 plat indicates that Surveyors T. Kilroe and D. Hintz set the 1/4 corner midpoint between the NE and SE corners. An overall distance from the NE corner to the SE corner of 82.092 chains is shown on plat. The plat does not indicate what was set to mark the corner or what bearing objects were established.

2014 - I found an existing 4" brass capped monument. Monument is stamped "T34N R9E, S.20, S.21, 1/4 prop. cor. T.K. D.H." I believe the monument to be that set by Kilroe & Hintz. I accepted the location of the monument as the best available evidence of the original corner location.

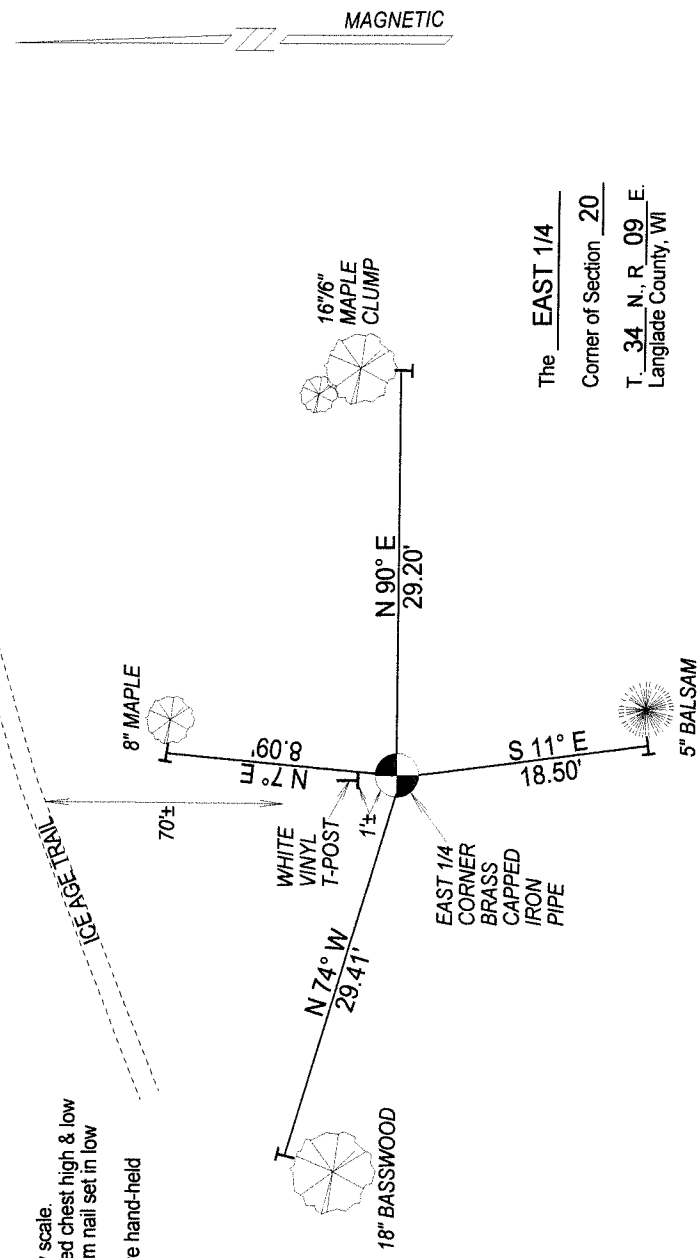
### Physical description of the monument set:

2014 - I accept the 4" brass capped monument as the corner location and tied it out as follows.

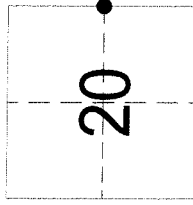
Describe the accessories used to perpetuate the location of the corner. Include a plan view drawing and indicate accessories found/set. Describe measuring point on bearing trees. Show any topographic features that would aid in future recovery of the corner.

#### NOTES:

- Drawing not to any scale.
- Bearing trees blazed chest high & low side blaze, aluminum nail set in low side blaze.
- Bearings shown are hand-held compass

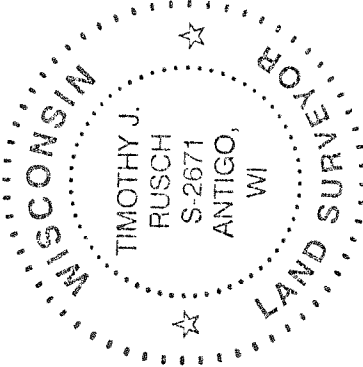


The EAST 1/4  
Corner of Section 20  
T. 34 N., R. 09 E.  
Langlade County, WI



● = Location of corner

SURVEYORS SEAL



I, Timothy J. Rusch certify that the corner location shown on this record was determined by me or under my direction and control and that this U.S. Public Land Survey Monument Record is correct and complete to the best of my knowledge and belief.

Timothy J. Rusch 11/04/2014  
Signature Date