

CERTIFIED LAND CORNER RESTORATION

Index No. R-13

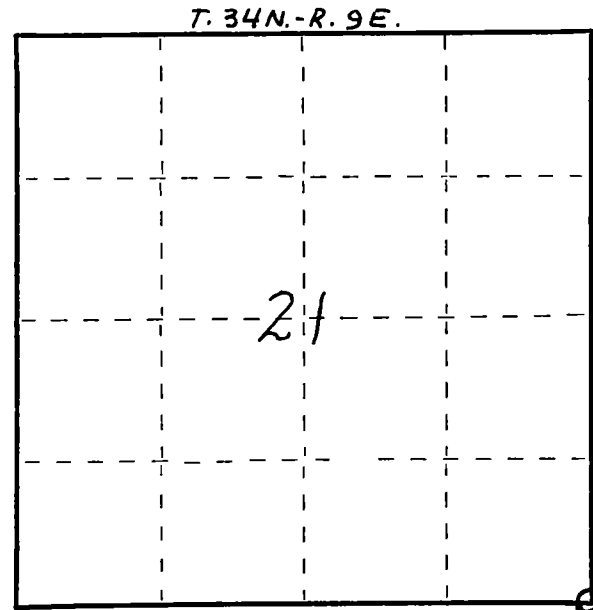
State of Wisconsin }
 County of LANGLADE } ss.

I WILLIAM F. KELLY, do hereby certify that on the 28TH day of DECEMBER, 1976, I found evidence of the SECTION corner of SECTIONS 21, 22, 26, 27 Township 34, North, Range 9E, Fourth Principal Meridian, as described hereon; and that from this evidence I established a new monument and accessories as described hereon to perpetuate the original location of this corner.

Resident witnesses:

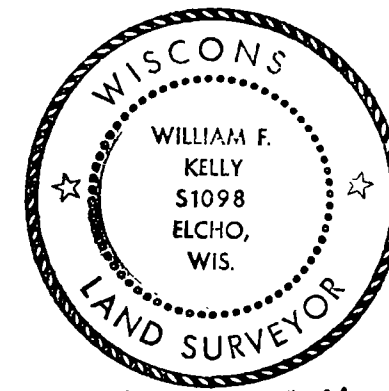
.....

FORM 985 H. C. MILLER CO., MILWAUKEE



○ = Corner monument restored.

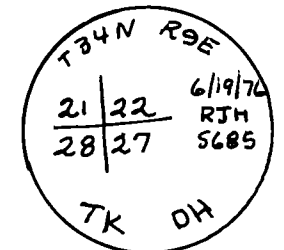
History of original corner establishment:



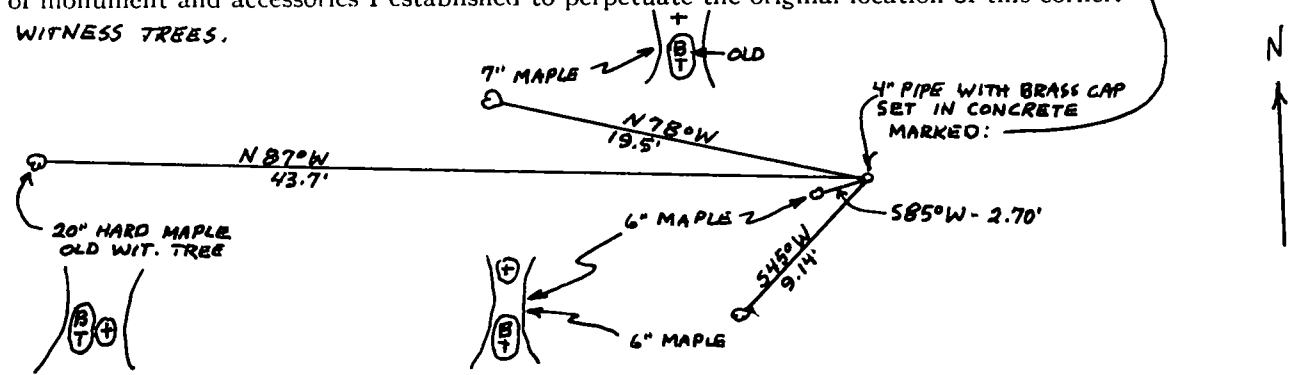
Description of corner evidence found:

4" IRON PIPE WITH BRASS CAP SET ON RESURVEY IN 1937 BY T. KILROE AND D. HINTZ

William F. Kelly 12-28-76



Description of monument and accessories I established to perpetuate the original location of this corner.
 MARKED WITNESS TREES.



Dated at ELCHO, Wis., this 28TH day of DECEMBER, 1976

Signature William F. Kelly Title REGISTERED LAND SURVEYOR Registration No. 51098
 (County Surveyor, Registered Land Surveyor, or other duly authorized official)

Office of Register of Deeds, County of....., I hereby certify that the within instrument was filed in this office for record on the..... day of....., 19..... at..... o'clock..... M.

.....
 (Register of Deeds)

By..... Deputy

CERTIFIED LAND CORNER RESTORATION

Index No. R-13

34.9

State of Wisconsin }
County of Langlade } ss.

I, Raymond S. Hallisy, do hereby certify that on the 26th day of JUNE, 1976, I found evidence of the SECTION corner of 21, 22, 27, 28 Township 34, North, Range 9E, Fourth Principal Meridian, as described hereon; and that from this evidence I established a new monument and accessories as described hereon to perpetuate the original location of this corner.

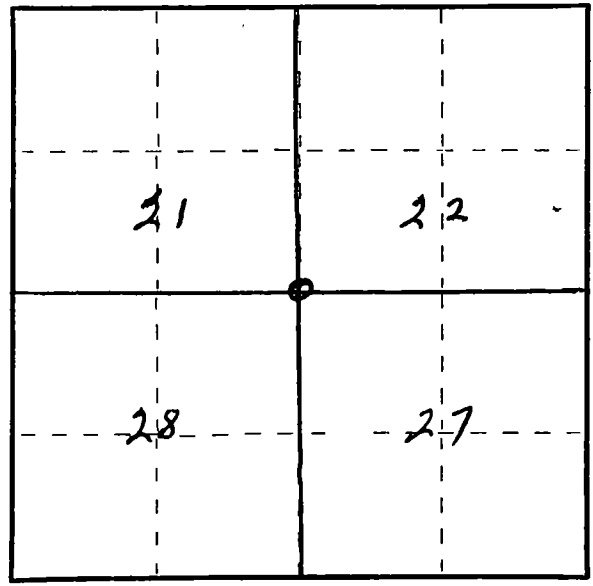
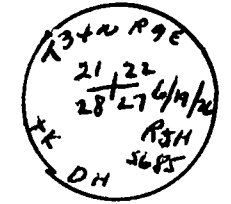
Resident witnesses:
.....
.....
.....

History of original corner establishment:
CORNER SET IN THE 1930 RESURVEY

Description of corner evidence found:
4" PIPE WITH BRASS CAP
OLD BT. 14" HARD MAPLE N80W 66.66 LKS
NOW 24"

Description of monument and accessories I established to perpetuate the original location of this corner.

NEW BT'S
8" HARD MAPLE S85W 2.7 FT.
8" HARD MAPLE N82W 9.2 FT
6" RED MAPLE S43W 19.5 FT



○ = Corner monument restored.

Dated at Antigo, Wis., this 26th day of JUNE, 1976

Signature Raymond S. Hallisy Title Lang. Land Surveyor Registration No. 5685
(County Surveyor, Registered Land Surveyor, or other duly authorized official)

Office of Register of Deeds, County of....., I hereby certify that the within instrument was filed in this office for record on the..... day of....., 19..... at..... o'clock..... M.

.....
(Register of Deeds)

By..... Deputy

FORM 985 H. C. MILLER CO., MILWAUKEE