

CERTIFIED LAND CORNER RESTORATION

Index No. R-11
34-9

State of Wisconsin }
County of Lanade } ss.

I Raymond J. Hallis do hereby certify that on the 26th day of November, 1977, I found evidence of the 1/4 corner of 21 & 28 Township 34, North, Range 9E, Fourth Principal Meridian, as described hereon; and that from this evidence I established a new monument and accessories as described hereon to perpetuate the original location of this corner.

Resident witnesses:

.....
.....
.....

History of original corner establishment:

Corner set in the 1930 resurvey.

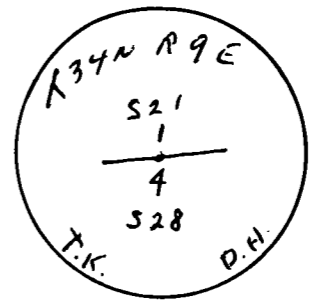
Description of corner evidence found:

1" iron pipe with brass cap

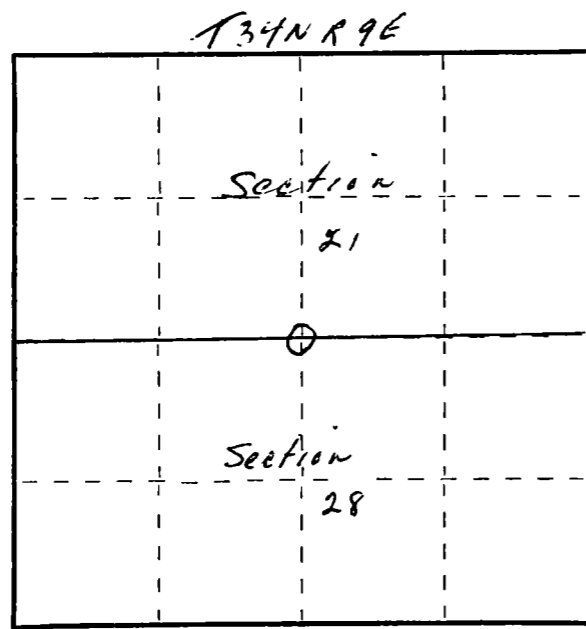
Description of monument and accessories I established to perpetuate the original location of this corner.

New P.T.'s

10" Red Maple S48W ~~XXX~~ 8' 3"
1/2" Hard Maple N41W 7' 6"
5" Hemlock N42E 15' 9"



FORM 985 H. C. MILLER CO. MILWAUKEE



○ = Corner monument restored.

Dated at Antigo, Wis., this 26th day of November, 1977

Signature Raymond J. Hallis Title Land Surveyor Registration No. 5685
(County Surveyor, Registered Land Surveyor, or other duly authorized official)

Office of Register of Deeds, County of _____, I hereby certify that the within instrument was filed in this office for record on the _____ day of _____, 19____ at _____ o'clock _____ M.

(Register of Deeds)

By _____ Deputy