

LANGLADE COUNTY U.S. PUBLIC LAND CORNER RESTORATION

The East Quarter corner of Section 21, T. 34 N., R. 9 E., Langlade County, WI.

Corner was: (check all that apply)

4340921 2000

- Restored through acceptance of an obliterated evidence location.
- Restored through acceptance of a found perpetuated location.
- Determined to be lost and re-established through proportionate methods.
(Show bearings and distances to PLSS corners used for proportioning, and show original distances).
- Restored/recovered/re-established in a location that differs from a previously established position.
(Show difference in plan view below).
- Check here if addition information is shown on the reverse side of this form.

Describe record evidence, recovered physical evidence, occupational evidence, testimonial evidence and all other evidence considered in the recovery/restoration of the corner.

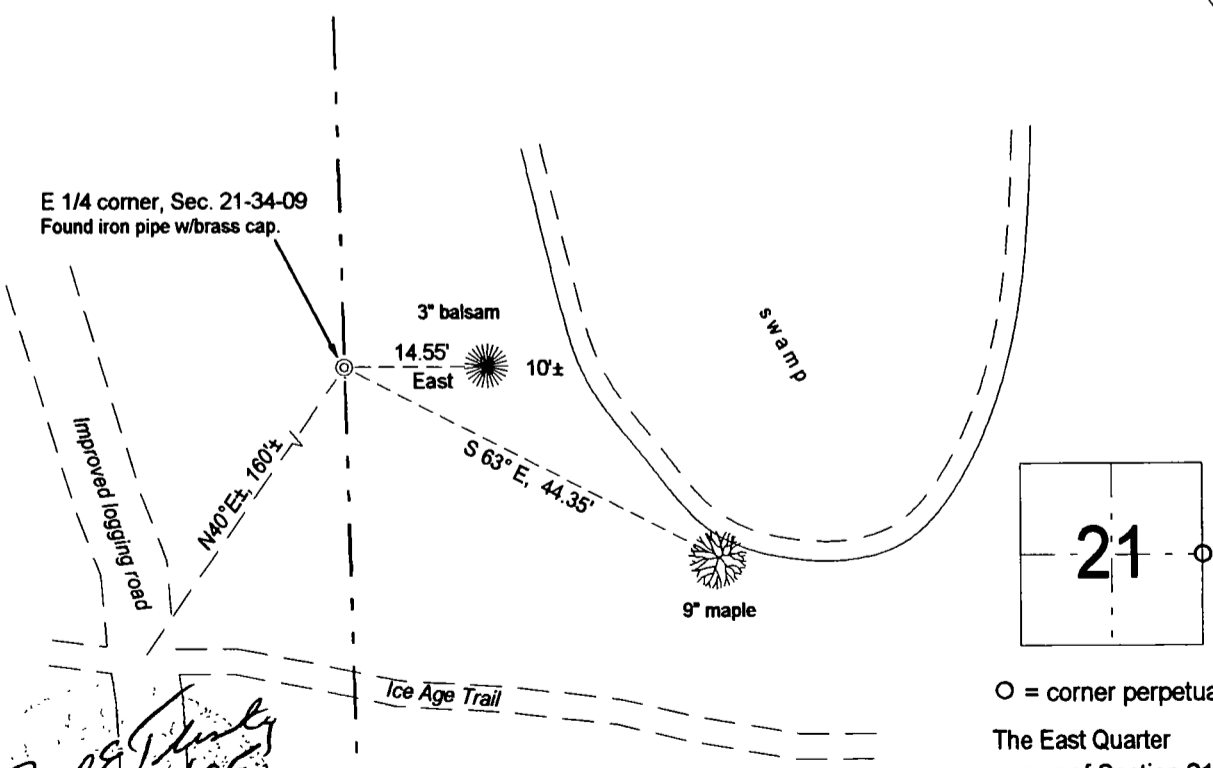
The original corner was established in 1864 by James L. Nowlin. Original bearing trees: hemlock, 10", S81°W, 15 links and a hemlock, 12", S75°E. 20 links. In 1909, Brooks found OBT standing. In the 1930's re-survey, Hintz "found orig 1/4 cor. orig hem. 10", N85°W, 16 links and hem., S60°W, 20 links." He marked a stone, SE, 10.6' right on west edge of swamp. Set mon w/bc. 12/23/97 D. Tlusty, S. Jackson, K. Lindner found 4" iron pipe with brass cap on the west side of a small swamp hole. After check of measurement to corners to the north and south, accepted monument as evidence of a perpetuation of the original corner location.

Physical description of the monument set:

Set white vinyl sign post next to the monument found.

Describe the accessories used to perpetuate the corner. Include a plan view drawing and accessories found/set. Describe measuring point on bearing trees. Show any topographic features that would aid in future recovery of the corner.

Field book 14-78



○ = corner perpetuated
The East Quarter corner of Section 21, T. 34 N., R. 9 E., Langlade County, WI

Index No. P13 34-09

David E. Tlusty
2 No. 105

I, David E. Tlusty, Registered Land Surveyor, as Langlade County Surveyor, certify that the corner location on this record was determined by me and that this U.S. Public Land Survey Monument Record is correct to the best of my knowledge and belief.