

CERTIFIED LAND CORNER RESTORATION

Index No. R-17

State of Wisconsin }  
County of LAWLACE } ss.

I Raymond J. Halliday, do hereby certify that on the 5<sup>th</sup> day of Sept, 1987, I found evidence of the Section corner of 22, 23, 27, 26 Township 34, North, Range 9E, Fourth Principal Meridian, as described hereon; and that from this evidence I established a new monument and accessories as described hereon to perpetuate the original location of this corner.

Resident witnesses:

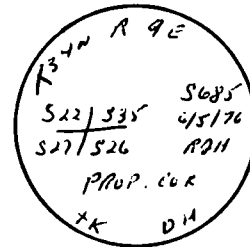
.....  
.....  
.....

History of original corner establishment:

1930 Resurvey

Description of corner evidence found:

BRASS CAP MARKED



WITNESS TREES

8" White Spruce S 30° W 33.63'  
6" BALSAM S 30° W 32.30'  
8" BALSAM N 74° 30' E 33.23'

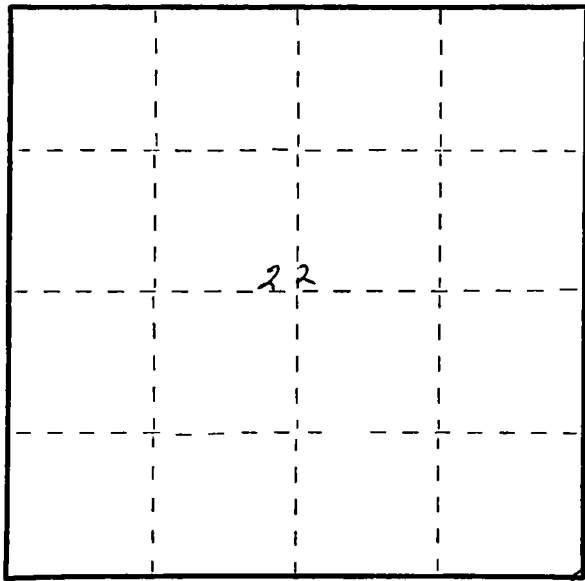
Description of monument and accessories I established to perpetuate the original location of this corner.

NEW BT

8" Red MAPLE S 20° W 34.2 FT

FORM 983 M. C. MILLER CO., MILWAUKEE

T 34 R 9 E



○ = Corner monument restored.

Dated at Antigo, Wis., this 5<sup>th</sup> day of Sept, 1987.

Signature Raymond J. Halliday Title SURVEYOR Registration No. S-685  
(County Surveyor, Registered Land Surveyor, or other duly authorized official)

Office of Register of Deeds, County of....., I hereby certify that the within instrument was filed in this office for record on the.....day of....., 19..... at.....o'clock..... M.

.....  
(Register of Deeds)

By.....Deputy

CERTIFIED LAND CORNER RESTORATION

Index No. R-17

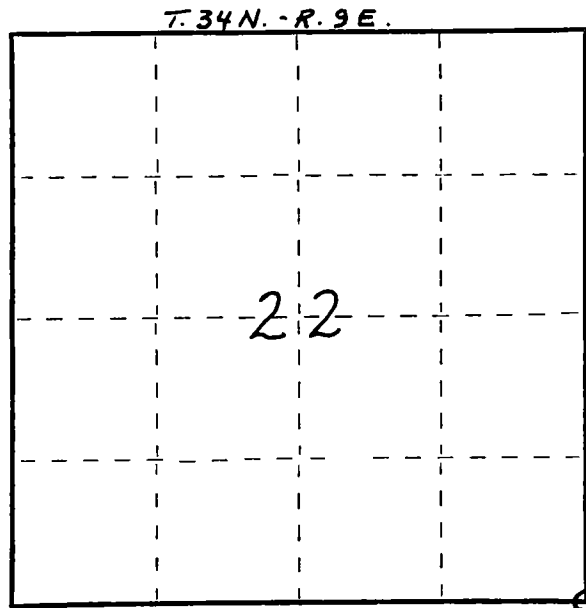
State of Wisconsin }  
 County of LANGLADE } ss.

I WILLIAM F. KELLY, do hereby certify that on the 28<sup>TH</sup> day of DECEMBER, 1976, I found evidence of the SECTION corner of SECTIONS 22, 23, 27, 26 Township 34, North, Range 9E, Fourth Principal Meridian, as described hereon; and that from this evidence I established a new monument and accessories as described hereon to perpetuate the original location of this corner.

Resident witnesses:

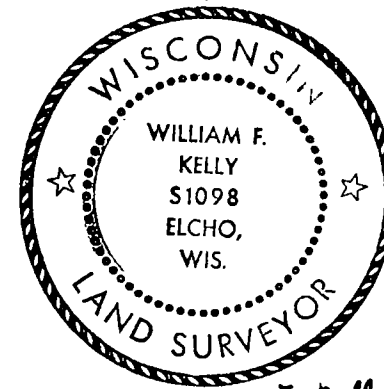
.....  
 .....  
 .....

FORM 985 H. C. MILLER CO., MILWAUKEE



○ = Corner monument restored.

History of original corner establishment:

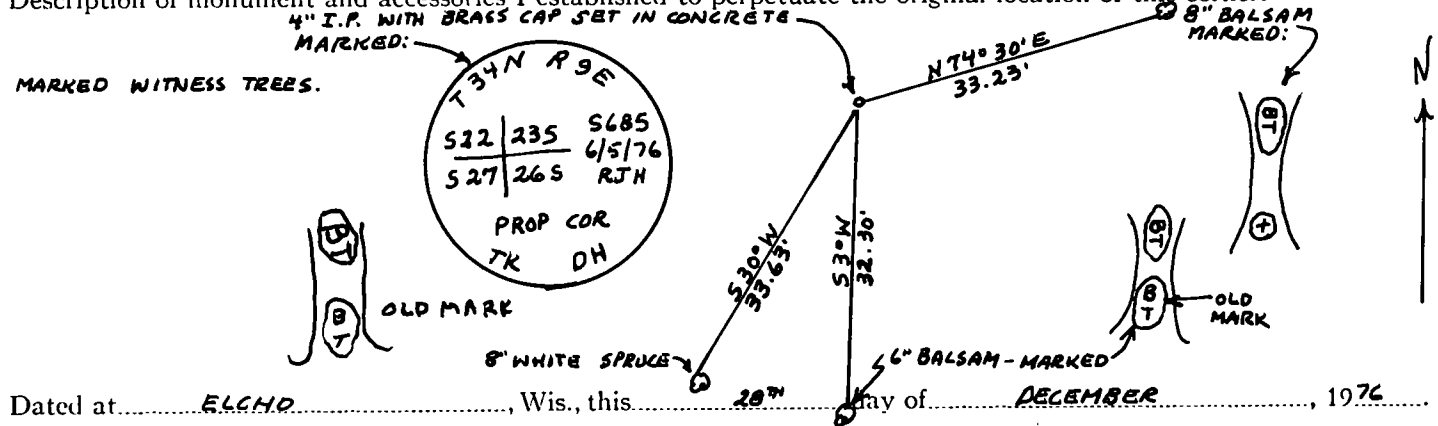


*William F. Kelly 12-28-76*

Description of corner evidence found:

4" IRON PIPE WITH BRASS CAP SET ON RESURVEY FROM 1937 BY T. KILRDE AND D. HINTZ.

Description of monument and accessories I established to perpetuate the original location of this corner.



Dated at ELCHO, Wis., this 28<sup>TH</sup> day of DECEMBER, 1976

Signature William F. Kelly Title REGISTERED LAND SURVEYOR Registration No. 51098  
 (County Surveyor, Registered Land Surveyor, or other duly authorized official)

Office of Register of Deeds, County of....., I hereby certify that the within instrument was filed in this office for record on the..... day of....., 19..... at..... o'clock..... M.

(Register of Deeds)

By..... Deputy

CERTIFIED LAND CORNER RESTORATION

Index No. R-17

34.9

State of Wisconsin }  
County of Lanola } ss.

I, Raymond J. Hallisy, do hereby certify that on the 5<sup>th</sup> day of June, 1976, I found evidence of the Section corner of 22, 23, 26, 27 Township 34, North, Range 9E, Fourth Principal Meridian, as described hereon; and that from this evidence I established a new monument and accessories as described hereon to perpetuate the original location of this corner.

Resident witnesses:

.....  
.....  
.....

History of original corner establishment:

CORNER SET in The 1930 Resurvey

Description of corner evidence found:

4" pipe with BRASS cap

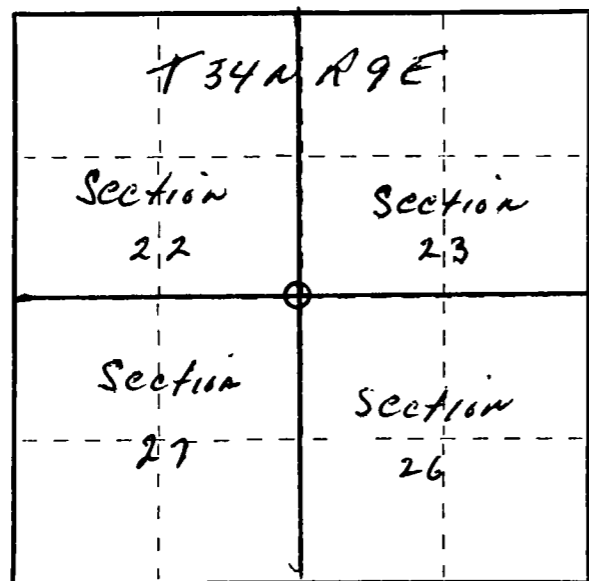
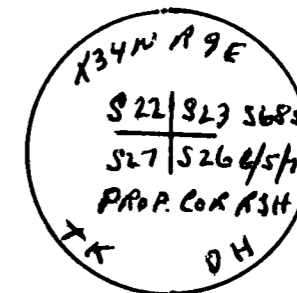
Location Poster 3.5 FT. NORTH ON OLD FIRE LANE

Description of monument and accessories I established to perpetuate the original location of this corner.

BT'S

9" Spruce S 32 W 33.5 FT.

6" Balsam S 3 W 33.1 FT.



○ = Corner monument restored.

Dated at Antigo, Wis., this 5<sup>th</sup> day of JUNE, 1976.

Signature Raymond J. Hallisy Title Reg. Land Surveyor Registration No. 5685  
(County Surveyor, Registered Land Surveyor, or other duly authorized official)

Office of Register of Deeds, County of \_\_\_\_\_, I hereby certify that the within instrument was filed in this office for record on the \_\_\_\_\_ day of \_\_\_\_\_, 19\_\_\_\_ at \_\_\_\_\_ o'clock \_\_\_\_\_ M.

.....  
(Register of Deeds)

By \_\_\_\_\_ Deputy