

CERTIFIED LAND CORNER RESTORATION

Index No. P-21

34-9

State of Wisconsin }
County of Lanzlade } ss.

History of original corner establishment:

Corner set in the 1930 resurvey.

I Raymond J. Hallisy, do hereby certify that on the 15th day of October, 1977, I found evidence of the 1/4 corner of 23 & 24 Township 34, North, Range 9E, Fourth Principal Meridian, as described hereon; and that from this evidence I established a new monument and accessories as described hereon to perpetuate the original location of this corner.

Description of corner evidence found:

4" iron pipe with brass cap.
Old BT 26" Yellow Birch S15W 26.81 Links (dead)

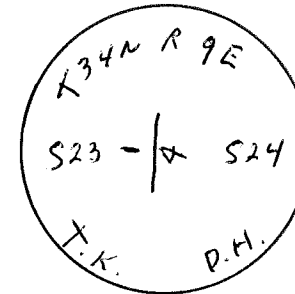
Resident witnesses:

.....
.....
.....

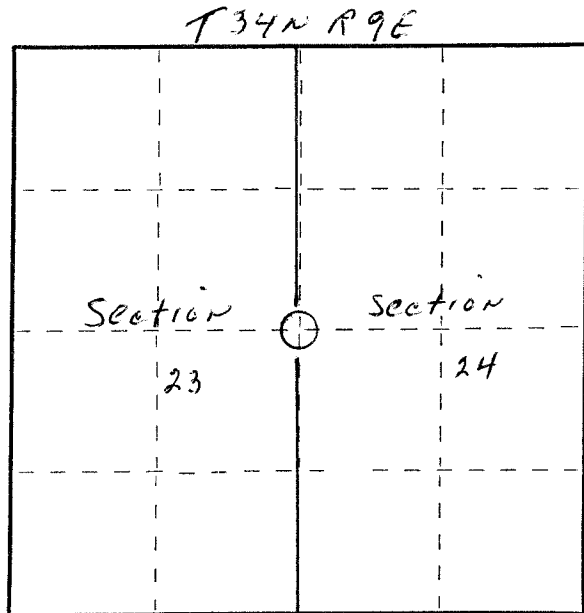
Description of monument and accessories I established to perpetuate the original location of this corner.

New BT's

7" Black Ash N19W 9' 6"
6" Black Ash S40 W 10' 5"
5" Hard Maple S35E 15' 1"



FORM 985 H. C. MILLER CO., MILWAUKEE



○ = Corner monument restored.

Dated at Antigo, Wis., this 15th day of October, 1977

Signature Raymond J. Hallisy Title Land Surveyor Registration No. 5685
(County Surveyor, Registered Land Surveyor, or other duly authorized official)

Office of Register of Deeds, County of _____, I hereby certify that the within instrument was filed in this office for record on the _____ day of _____, 19____ at _____ o'clock _____ M.

.....
(Register of Deeds)

By _____ Deputy