

CERTIFIED LAND CORNER RESTORATION

34-9

Index No. T-5

State of Wisconsin }  
County of Langlade } ss.

History of original corner establishment:

Corner set in the 1930 resurvey.

I Raymond J. Hallisy do hereby certify that on the 6th day of June, 1971, I found evidence of the 4 corner of Section 30 & 29 Township 34, North, Range 9E, Fourth, Principal Meridian, as described hereon; and that from this evidence I established a new monument and accessories as described hereon to perpetuate the original location of this corner.

Description of corner evidence found:

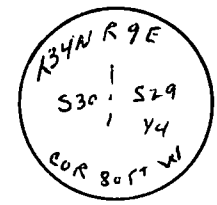
Reset corner 80 Feet ~~XX~~ East of true corner, because of road improvement.

Resident witnesses:

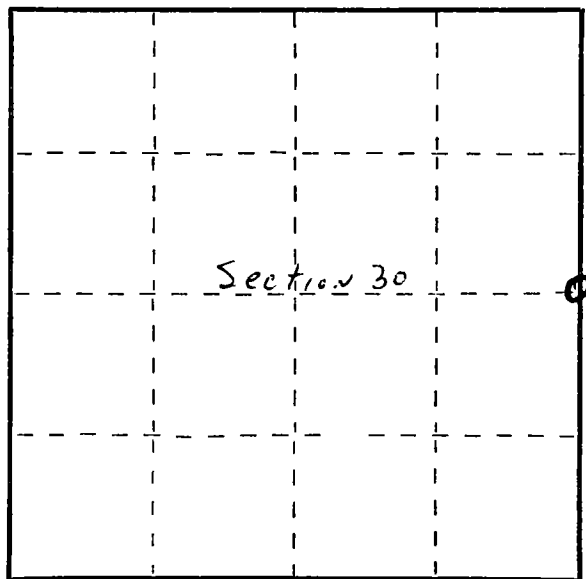
.....  
.....  
.....

Description of monument and accessories I established to perpetuate the original location of this corner.

Set 4" brass cap in cement  
BT's to witness corner  
6" Red Maple S11E 43 Feet 9 inches  
8" Cedar 40 Feet 2 inches  
BT's faced at base of tree and scribed BT.



FORM 985 M. C. MILLER CO., MILWAUKEE



○ = Corner monument restored.

Dated at Antigo, Wis., this 6th day of June, 1971

Signature R. J. Hallisy Title Reg. Land Surveyor Registration No. 685  
(County Surveyor, Registered Land Surveyor, or other duly authorized official)

Office of Register of Deeds, County of \_\_\_\_\_, I hereby certify that the within instrument was filed in this office for record on the \_\_\_\_\_ day of \_\_\_\_\_, 19\_\_\_\_ at \_\_\_\_\_ o'clock \_\_\_\_\_ M.

.....  
(Register of Deeds)

By \_\_\_\_\_ Deputy

CERTIFIED LAND CORNER RESTORATION

34-9  
Index No. T-5

State of Wisconsin }  
County of LANGLADE } ss.

History of original corner establishment:  
1937

I G. MCKENNA + G WEIX, do hereby certify that on the 6 day of AUGUST, 1963, I found evidence of the Y4 corner of SEC 30 + 29 Township 34, North, Range 9, Fourth Principal Meridian, as described hereon; and that from this evidence I established a new monument and accessories as described hereon to perpetuate the original location of this corner.

Description of corner evidence found:

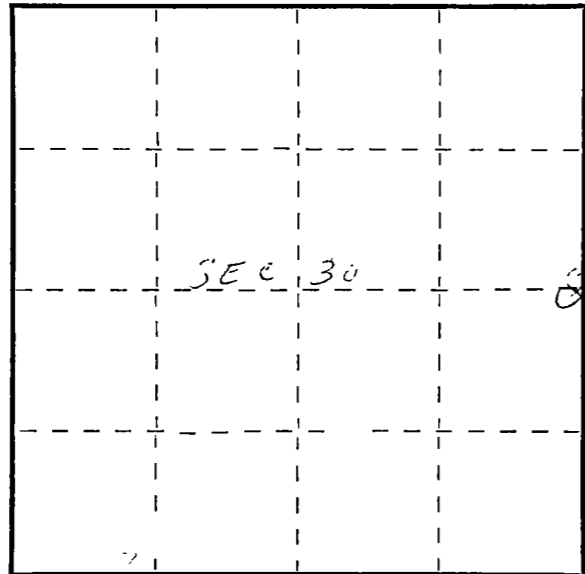
4" IRON PIPE WITH BRASS CAP WC 30 FT WEST OF CORNER

Resident witnesses:

G. McKenna  
Gerald L. Weix

Description of monument and accessories I established to perpetuate the original location of this corner.

SET SAME PIPE 80 FT EAST OF CORNER AND RESTAMPED



○ = Corner monument restored.

Dated at \_\_\_\_\_, Wis., this \_\_\_\_\_ day of \_\_\_\_\_, 19\_\_\_\_\_

Signature \_\_\_\_\_ Title \_\_\_\_\_ Registration No. \_\_\_\_\_  
(County Surveyor, Registered Land Surveyor, or other duly authorized official)

Office of Register of Deeds, County of \_\_\_\_\_, I hereby certify that the within instrument was filed in this office for record on the \_\_\_\_\_ day of \_\_\_\_\_, 19\_\_\_\_\_ at \_\_\_\_\_ o'clock \_\_\_\_\_ M.

\_\_\_\_\_  
(Register of Deeds)

By \_\_\_\_\_ Deputy

FORM 985 H. C. MILLER CO. MILWAUKEE

CERTIFIED LAND CORNER RESTORATION

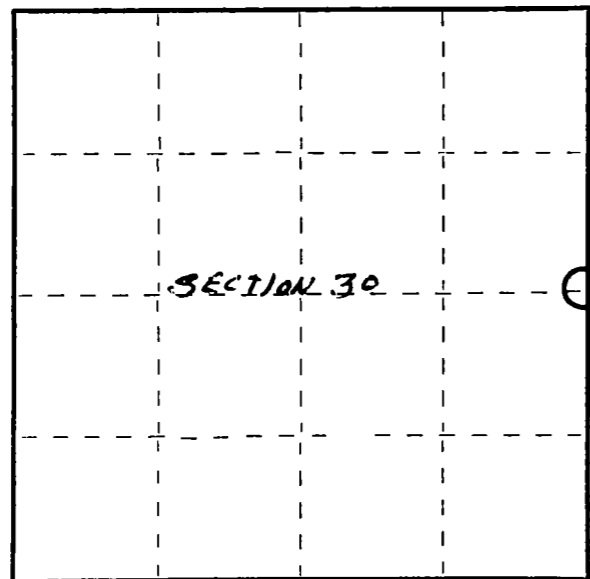
Index No. T-5

State of Wisconsin }  
County of Langlade } ss.

I Raymond J. Hallisy, do hereby certify that on the 24<sup>th</sup> day of August, 1974, I found evidence of the W.C. To 1/4 corner of SECTION 29, 30 Township 34, North, Range 9 E, Fourth Principal Meridian, as described hereon; and that from this evidence I established a new monument and accessories as described hereon to perpetuate the original location of this corner.

Resident witnesses:

.....  
.....  
.....



○ = Corner monument restored.

History of original corner establishment:

1930 RESURVEY

Description of corner evidence found:

3 WHITE PINE STUMP BT TO W.C. N13°W 8.6 LKS  
4" PIPE W.C. 80 FT EAST OF TRUE CORNER

Description of monument and accessories I established to perpetuate the original location of this corner.

SET 2" IRON PIPE WITH BRASS CAP W.C.  
30 FT WEST OF TRUE CORNER

NO NEW BT's



Dated at Antigo, Wis., this 24<sup>th</sup> day of August, 1974.

Signature Raymond J. Hallisy Title Reg. Land Surveyor Registration No. 5-685  
(County Surveyor, Registered Land Surveyor, or other duly authorized official)

Office of Register of Deeds, County of....., I hereby certify that the within instrument was filed in this office for record on the..... day of....., 19..... at..... o'clock..... M.

.....  
(Register of Deeds)

By..... Deputy