

LANGLADE COUNTY U.S. PUBLIC LAND CORNER RESTORATION

The quarter corner common to Section 6-33-09 and Section 31 34-09, Langlade County, WI.

4340931 0020 2024

Corner was: (check all that apply)

- Restored through acceptance of an obliterated evidence location.
- Restored through acceptance of a found perpetuated location.
- Determined to be lost and re-established through proportionate methods.
- Show bearings and distances to PLSS corners used for proportioning, and show original distances).
- Restored/recovered/re-established in a location that differs from a previously established position.
- (Show difference in plan view below).
- Check here if additional information is shown on the reverse side of this form.

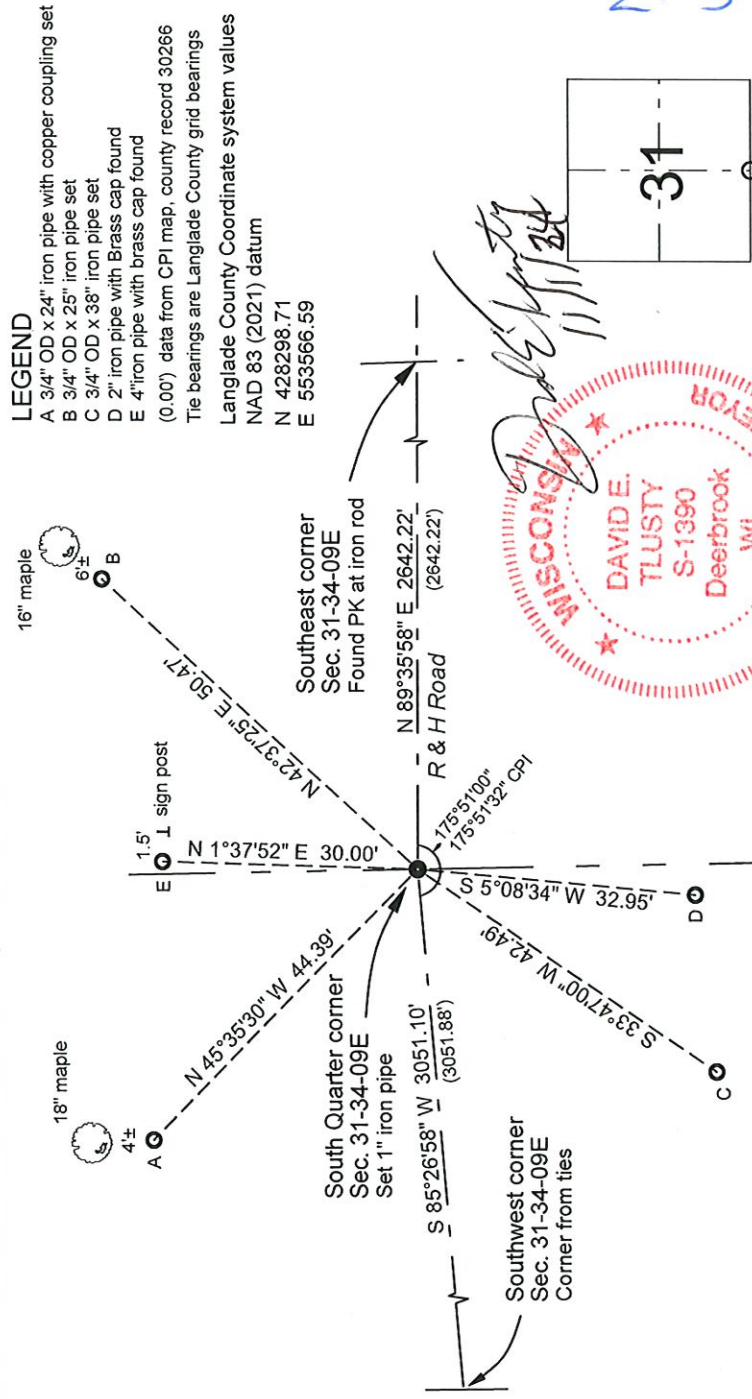
Corner history:

The corner was originally established by Hiram C. Fellows on June 29th 1859. Original bearing trees: Hemlock, 8", S50W, 10 links and a sugar, 12", N60E, 20 links. In the 1930's resurvey notes, Darwin Hintz described this corner as: "orig. 1/4 cor. Stone in road. No B.T." On a Land Corner Restoration form dated December 5th, 1975, William F. Kelly said: "found 4" pipe with brass cap witness corner. Excavated in road and found broken crockery and old fence wire wrapped around stone broken up." Kelly set a 2" BIP with brass cap, south, 33'. On map #30266, dated February 1, 1982, in County Surveyor records, Consolidated Paper Inc. (CPI) surveyor Daniel Pleogger said: "1" iron pipe in road W/WC found". In May, 2024, I found a 3/4" rebar of unknown origin, in the road at 30.4' south of 4" iron pipe with brass cap (1930's witness corner). I reestablished the corner at 30.00 feet south of the witness monument and at CPI's distance from the Southeast corner of Section 31.

Physical description of the monument set:

For the corner, I set a 1" ID x 30" iron pipe, top of which is 11" below the gravel road surface.

Describe the accessories used to perpetuate the corner. Include a plan view drawing and accessories found/set. Describe measuring point on bearing trees. Show any topographic features that would aid in future recovery of the corner.



LEGEND

- A 3/4" OD x 24" iron pipe with copper coupling set
 - B 3/4" OD x 25" iron pipe set
 - C 3/4" OD x 38" iron pipe set
 - D 2" iron pipe with Brass cap found
 - E 4" iron pipe with brass cap found
- (0.00') data from CPI map, county record 30266
The bearings are Langlade County grid bearings
Langlade County Coordinate system values
NAD 83 (2021) datum
N 428298.71
E 553566.59



Z-3 34-09

O = corner perpetuated
The South Quarter corner of Section 31, T. 34 N., R. 09 E., Langlade County, WI

I, David E. Tlusty, Wisconsin Professional Land Surveyor S-1390, do hereby certify that the corner location and perpetuation shown on this record was made by me and that this U.S. Public Land Survey Monument Record as required by AE-7.08 of the Wisconsin Administrative Code is correct to the best of my knowledge and belief.

CERTIFIED LAND CORNER RESTORATION

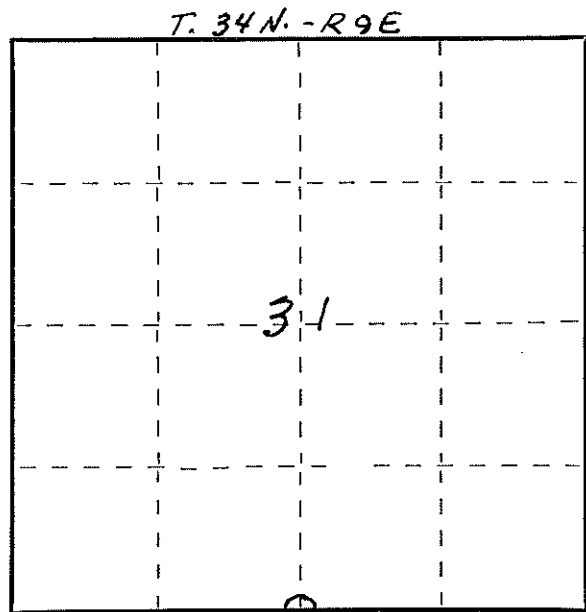
Index No. 3-3

State of Wisconsin }
 County of LANGLADE } ss.

I, WILLIAM F. KELLY, do hereby certify that on the 5TH day of DECEMBER, 1975, I found evidence of the 1/4 SECTION corner of SECTIONS 31 & 36 Township 34 & 33, North, Range 9E, Fourth Principal Meridian, as described hereon; and that from this evidence I established a new monument and accessories as described hereon to perpetuate the original location of this corner.

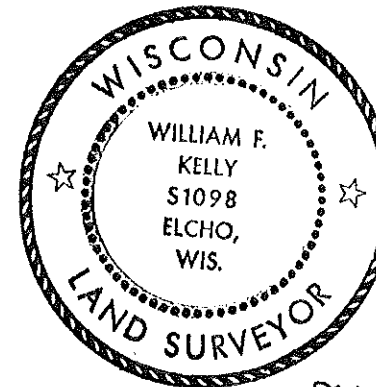
Resident witnesses:

.....



○ = Corner monument restored.

History of original corner establishment:

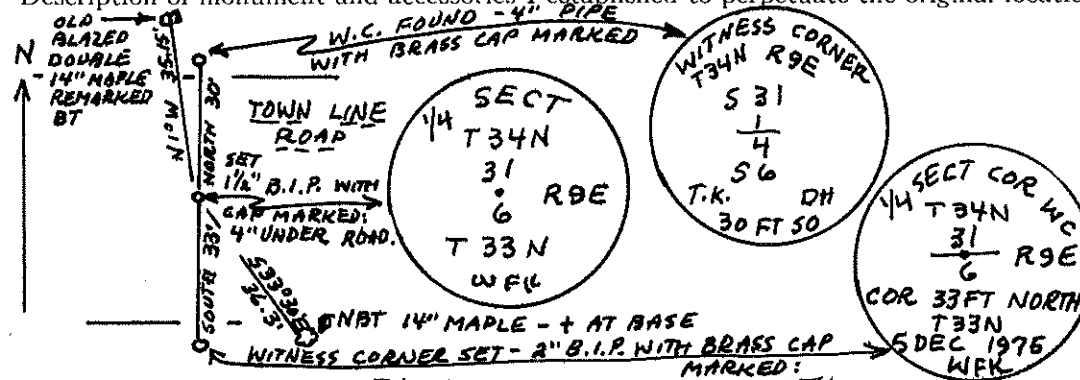


William F. Kelly

Description of corner evidence found:
 LOCATED 1/4 SECTION CORNER $\frac{31}{6}$ T34N-R9E
 T33N-R9E

FOUND 4" PIPE WITH BRASS CAP WITNESS CORNER. EXCAVATED IN ROAD AND FOUND BROKEN CRACKERY AND OLD FENCE WIRE WRAPPED AROUND STONE BROKEN UP.

Description of monument and accessories I established to perpetuate the original location of this corner.



SET 1 1/2" PIPE WITH BRASS CAP ON CORNER LOCATION. REPLACED CRACKERY AND WIRE AND PIECE OF METAL AROUND CORNER PIPE WHICH IS 4" UNDER ROAD SURFACE. SET 2" PIPE WITH BRASS CAP AS ADD. WIT. COR. REBLAZED OLD BLAZED TREE AND MARKED A NEW BEARING TREE.

Dated at ELCHO, Wis., this 5TH day of DECEMBER, 1975

Signature William F. Kelly Title REGISTERED LAND SURVEYOR Registration No: 51098
 (County Surveyor, Registered Land Surveyor, or other duly authorized official)

Office of Register of Deeds, County of....., I hereby certify that the within instrument was filed in this office for record on the..... day of....., 19..... at..... o'clock..... M.

(Register of Deeds)

By..... Deputy