

# LANGLADE COUNTY U.S. PUBLIC LAND CORNER RESTORATION

The quarter corner common to Sections 31 and 32, T. 34 N., R. 09 E., Langlade County, WI.

**Corner was: (check all that apply)**

- Restored through acceptance of an obliterated evidence location.
- Restored through acceptance of a found perpetuated location.
- Determined to be lost and re-established through proportionate methods.
- Show bearings and distances to PLSS corners used for proportioning, and show original distances).
- Restored/recovered/re-established in a location that differs from a previously established position.
- (Show difference in plan view below).
- Check here if additional information is shown on the reverse side of this form.

4340931 2000 2022

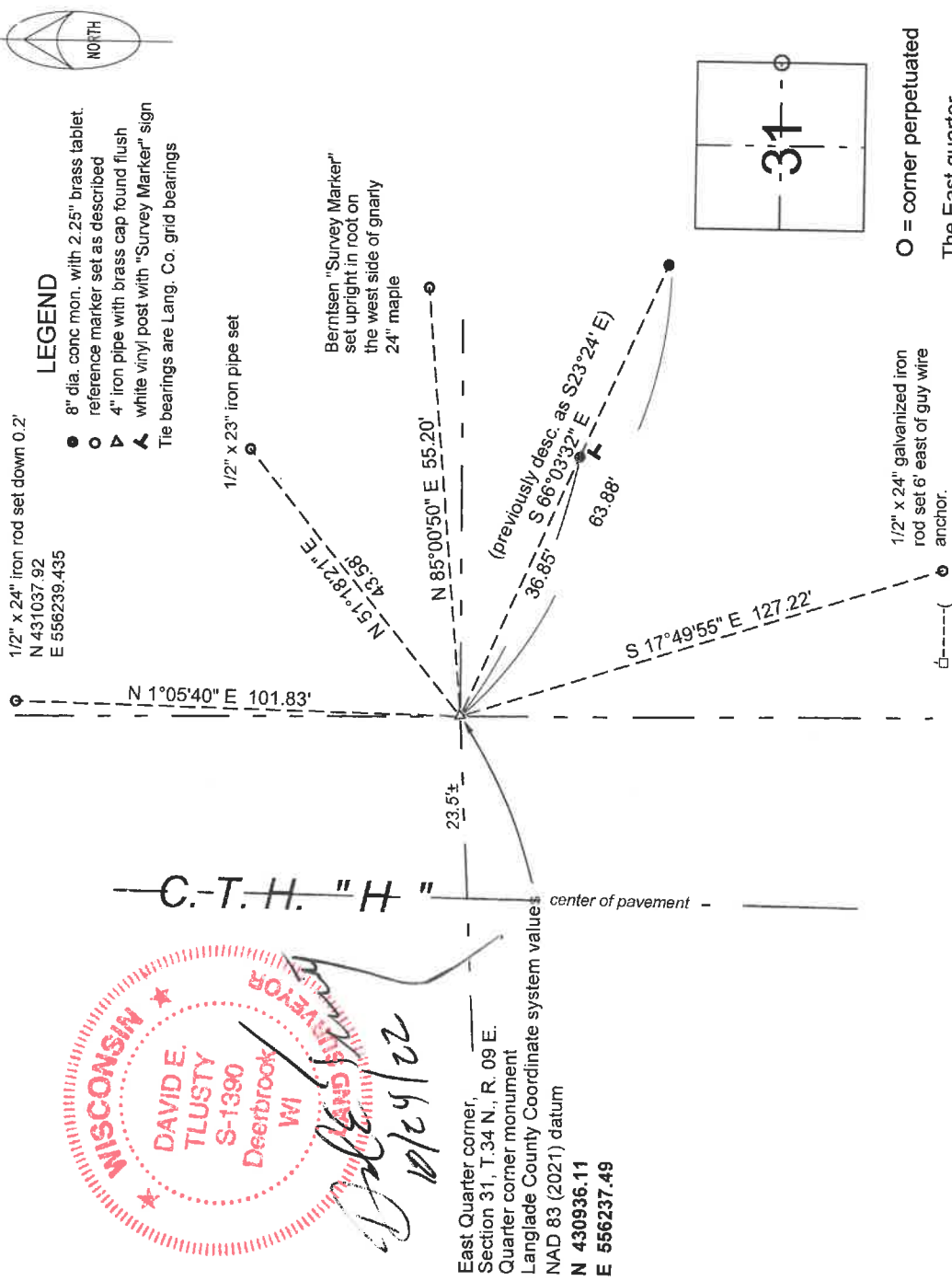
**Corner History.**

The original corner was established in 1864 by James L. Nowlin. Original bearing trees: sugar, 8", N54W, 20 links and a sugar, 8", N40E, 13 links. In the 1937 resurvey of this township, T.H. Kilroe and D.A. Hintz found no evidence of the original corner and set a 4" brass cap monument for this corner, by single proportionate measure. An undated "Preservation of Landmarks" form by J. Martinson, Proj. Eng. for the State Highway Comm. Of Wisconsin, says that "concrete reference monuments have been placed as witness to a 1/4 corner located... prior to the reconstruction of County Trunk Highway "H"". A 1966 tie sheet by Raymond Hallisy shows that he found the 2 reference corners mentioned above and "reset E 1/4 cor. on East side of CTH H". From said reset corner Hallisy surveyed the E-W quarter line in Section 31. A 1974 survey (county surveyor record 10307) by William Kelly shows this existing 1/4 corner as being a 4" brass cap set in concrete and he shows the two concrete reference monuments mentioned above. A 1981 tie sheet by Hallisy shows that he found 4" iron pipe with brass cap, "found lying in fence line. It was removed when road was reconstructed." He found the two concrete reference corners and "Reset 4" pipe in the true position". He marked two basswood trees and one maple bearing tree. On 10/20/22. I found the two concrete reference monuments in good condition and found Hallisy's reset corner monument in good condition, and at the described distances from the 1966 reference monuments.

**Physical description of the corner monument:**

I left the existing 4" iron pipe with brass cap in place, just below ground level.

**Describe the accessories used to perpetuate the corner. Include a plan view drawing and accessories found/set. Describe measuring point on bearing trees. Show any topographic features that would aid in future recovery of the corner.**



I, David E. Tlusty, Wisconsin Professional Land Surveyor S-1390, do hereby certify that the corner location and perpetuation shown on this record was made by me and that this U.S. Public Land Survey Monument Record as required by AE-7.08 of the Wisconsin Administrative Code is correct to the best of my knowledge and belief.

X-5 34-09

CERTIFIED LAND CORNER RESTORATION

Index No. X-5

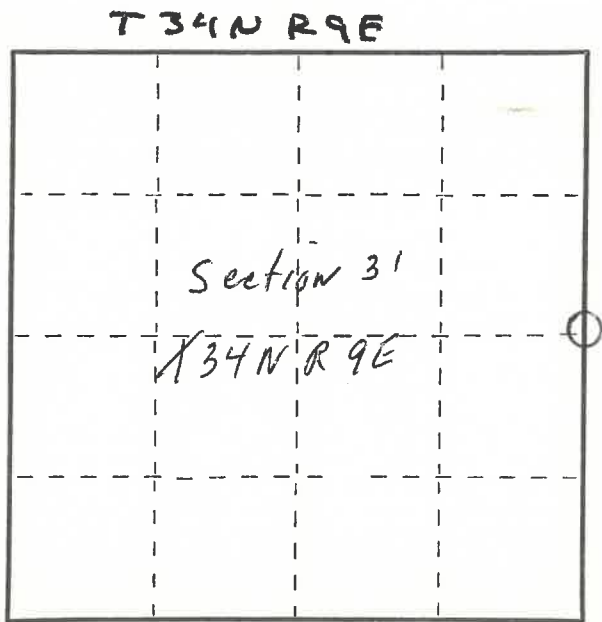
State of Wisconsin }  
 County of Langlade } ss.

I Raymond J. Hallisy, do hereby certify that on the 7th day of March, 1981, I found evidence of the 1/4 corner of Section 31 & 32 Township 34, North, Range 9E, Fourth Principal Meridian, as described hereon; and that from this evidence I established a new monument and accessories as described hereon to perpetuate the original location of this corner.

Resident witnesses:

.....  
 .....  
 .....

FORM 985 R. C. MILLER CO., MILWAUKEE



○ = Corner monument restored.

History of original corner establishment:

Corner set in the 1930 resurvey.

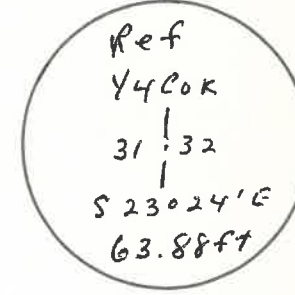
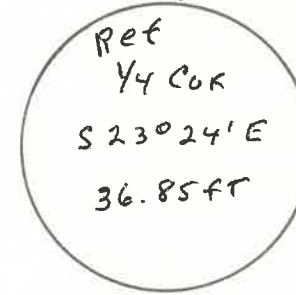
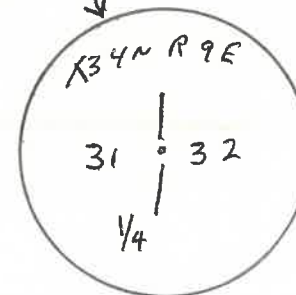
Description of corner evidence found:

4" iron pipe with brass cap, found lying in fence line. It was removed when road was reconstructed. Two reference corners set by Hwy. Dept. 2" brass caps set in cement.

Description of monument and accessories I established to perpetuate the original location of this corner.

Reset 4" pipe in the true position  
 New BT's

- 8" Basswood N65E 59'
- 6" Hard Maple N77E 60.3'
- 12" Basswood N82W 95.4'



Dated at Antigo, Wis., this 7th day of March, 1981.

Signature Raymond J. Hallisy Title reg. and Surveyor Registration No. S-685  
 (County Surveyor, Registered Land Surveyor, or other duly authorized official)

Office of Register of Deeds, County of \_\_\_\_\_, I hereby certify that the within instrument was filed in this office for record on the \_\_\_\_\_ day of \_\_\_\_\_, 19\_\_\_\_ at \_\_\_\_\_ o'clock \_\_\_\_\_ M.

(Register of Deeds)

By \_\_\_\_\_ Deputy

CERTIFIED LAND CORNER RESTORATION

34-9  
Index No. X-145

State of Wisconsin }  
County of LAWGLADE } ss.

I, RAYMOND J. HALLISY, do hereby certify that on the 13-14 day of APRIL, 1966, I found evidence of the E 1/4 AND W 1/4 corners of 31 Township 34 N, North, Range 9E, Fourth Principal Meridian, as described hereon; and that from this evidence I established a new monument and accessories as described hereon to perpetuate the original location of this corner.

Resident witnesses:

- Jersey Keyka - W.C.D. - ANTIGO
- STAN BANASH - W.C.D. - ANTIGO

History of original corner establishment:

LOCATED W 1/4 - BRASS CAP - RESURVEY OF 1937 BY T.H. KILROE AND D.A. HINTZ

LOCATED AND RESET E 1/4 - BRASS CAP - HISTORY - RESURVEY BY T.H. KILROE AND D.A. HINTZ IN 1937 AND BOOK 162-163 OF STATE HWY COHM - RHINELANDER, WISC. THE LATTER INFORMATION DESCRIBES CORNERS AND WORK IN RELOCATION OF CTH. "H."

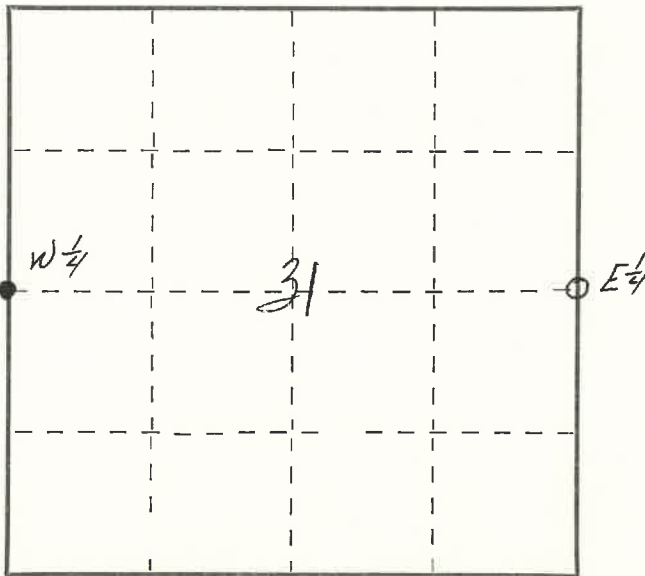
Description of corner evidence found:

- BRASS CAPS FOR E 1/4 AND W 1/4
- E 1/4 RESET
  - W 1/4 LOCATED

Description of monument and accessories I established to perpetuate the original location of this corner.

TRANSIT SURVEY - CHAINS - PINS - AXES  
(SEE BACK)

RESET E 1/4 - CHAIN BETWEEN NE SEC. COR. AND SW. SEC. CORNER. DISTANCE 79.36 CHAINS CORRES PONDING TO 1937 RESURVEY. LOCATE 2 REFERENCE CORNERS (DATA FROM ABOVE BOOK) AND RESET E 1/4 COR. ON EAST SIDE OF CTH H



○ = Corner monument restored.

Dated at ANTIGO, Wis., this 3 day of MAY, 1966.

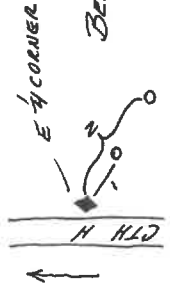
Signature Raymond J. Hallisy Title Asst. Dist. Forester and Reg. Wisc. Land Surveyor Registration No. 5-685  
(County Surveyor, Registered Land Surveyor, or other duly authorized official)

Office of Register of Deeds, County of \_\_\_\_\_, I hereby certify that the within instrument was filed in this office for record on the \_\_\_\_\_ day of \_\_\_\_\_, 19\_\_\_\_ at \_\_\_\_\_ o'clock \_\_\_\_\_ M.

\_\_\_\_\_  
(Register of Deeds)

By \_\_\_\_\_ Deputy

Wis. Highway Dept - Box 162-163 Lindauer - Lyona corner  
 @ E 1/4 corner



BEARING 523°24'E ? Further Confirmation  
 needed - I believe Bearing should  
 be Complementary Angle of 566°36'  
 to correspond with 1938 Runway  
 DIST ON REFERENCE COR

- 1 36.85 FT
- 2 63.88 FT

COMMENCING AT E 1/4 CORNER USING 2° E DEC

COMMENCE TRANSIT RANDOM LINE AT 587°45'W  
 LENGTH OF RANDOM 86.785 CHAINS FELL 94 LINKS  
 NORTH OF CORNER

CORRECTION 1.08 LINKS SOUTH/CHAIN TO TRUE  
 LINE

BEARING OF TRUE LINE 587° 7' 15" W

CORRECTED LINE EAST TO WEST

5 LKS EAST EDGE OF C1/4 "H" (BLACKTOP)

1.0 CHAINS EAST ~~WEST~~ EDGE OF FIELD

11.50 " WEST " " "

20.00 " SET SQUARE POST (21.60 LKS SO. OF RANDOM)

THIS "IS NOT" A CORNER - ONLY MARKS LINE

40.00 " SET SQUARE POST (43.20 LINKS SO. OF RANDOM)

THIS "IS NOT" A CORNER - ONLY MARKS LINE

BT ELM 8" N 40°15'W 37 LKS

ELM 10" N 52°W 88 LKS

60.00 " SET SQUARE POST (64.80 LINKS) SO. OF RANDOM

THIS "IS NOT" A CORNER - ONLY MARKS LINE

BT ASPEN 12" N 57°W 175 LKS

80.00 " PICKET ON LINE 86.40 LINKS SO OF RANDOM

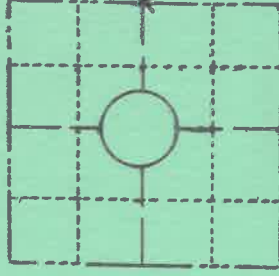
86.74 " W 1/4 corner.

POSTS AT 20.00, 40.00 AND 60.00 ARE NOT CORNERS. THEY ONLY  
 MARK LINE AND DISTANCE FROM E 1/4 CORNER.



**PRESERVATION OF LANDMARKS**

SECTION 59,635(7) WISCONSIN STATUTES  
 COUNTY Langlade  
 TOWN Parrish  
 HIGHWAY CTH "H"  
 SECTION NO. 31 32  
 T. 34 N., R 9 E.  
 TYPE OF LANDMARK 1/4 CORNER  
 LOCATION INDICATED ON SKETCH X

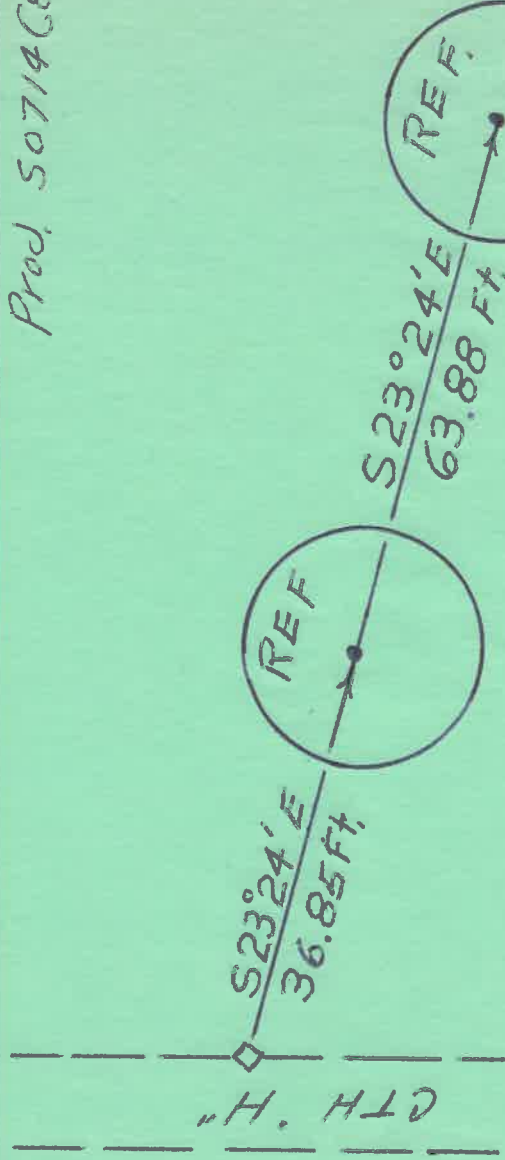


LOCATION SKETCH

PAGE

~~34-9~~  
X-8

Prod. 50714(8)



Concrete Reference Monuments have been placed as witness to a 1/4 corner located as indicated prior to the reconstruction of County Trunk Highway "H".

This space for copy of field notes or ties to the above described landmarks

Field notes or records filed in book no. 162 - 163  
 at the State Highway Comm. of Wisconsin office.  
 City of Rhinelander, Oneida County.  
 Located or established by J. Martinson Aug. 19, 19\_\_  
 Title Prod. Eng.

County Clerk's Office \_\_\_\_\_ County, Wis. } ss  
 Received for record \_\_\_\_\_, 19\_\_

Copy sent to County Surveyor \_\_\_\_\_, 19\_\_

County Clerk

CERTIFIED LAND CORNER RESTORATION

34-9  
Index No. X-5

State of Wisconsin }  
County of LANGLADE } ss.

History of original corner establishment:  
1937

I G. McKEENA & G. WEIX, do hereby certify that on the 6 day of AUGUST, 1963, I found evidence of the Y4 corner of SEC 31 & 32 Township 34, North, Range 9, Fourth Principal Meridian, as described hereon; and that from this evidence I established a new monument and accessories as described hereon to perpetuate the original location of this corner.

Description of corner evidence found:

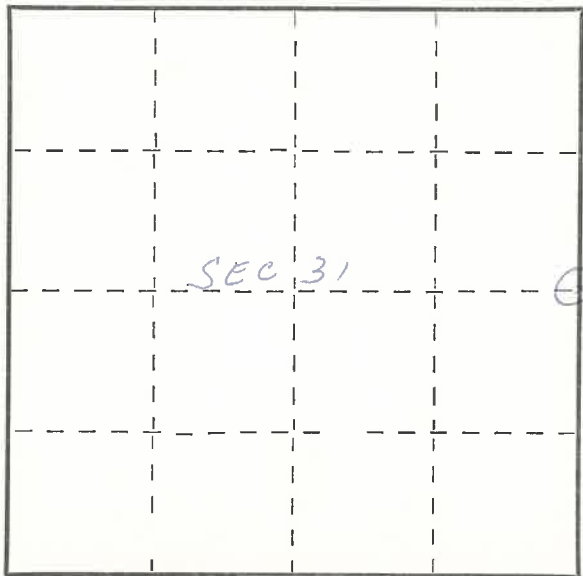
4" IRON PIPE WITH BASS CAP

Resident witnesses:

Eugene J. McKeena  
Frank J. Weix

Description of monument and accessories I established to perpetuate the original location of this corner.

SET SAME PIPE 100 FT. WEST OF CORNER  
AND RESTAMPED



○ = Corner monument restored.

Dated at \_\_\_\_\_, Wis., this \_\_\_\_\_ day of \_\_\_\_\_, 19\_\_\_\_\_

Signature \_\_\_\_\_ Title \_\_\_\_\_ Registration No. \_\_\_\_\_  
(County Surveyor, Registered Land Surveyor, or other duly authorized official)

Office of Register of Deeds, County of \_\_\_\_\_, I hereby certify that the within instrument was filed in this office for record on the \_\_\_\_\_ day of \_\_\_\_\_, 19\_\_\_\_\_ at \_\_\_\_\_ o'clock \_\_\_\_\_ M.

\_\_\_\_\_  
(Register of Deeds)

By \_\_\_\_\_ Deputy