

# LANGLADE COUNTY U.S. PUBLIC LAND CORNER RESTORATION

The East Quarter corner of Section 35, T. 34 N., R. 9 E., Langlade County, WI.

Corner was: (check all that apply)

4340935 2000

- Restored through acceptance of an obliterated evidence location.
- Restored through acceptance of a found perpetuated location.
- Determined to be lost and re-established through proportionate methods.  
Show bearings and distances to PLSS corners used for proportioning, and show original distances).
- Restored/recovered/re-established in a location that differs from a previously established position.  
(Show difference in plan view below).
- Check here if addition information is shown on the reverse side of this form.

**Describe record evidence, recovered physical evidence, occupational evidence, testimonial evidence and all other evidence considered in the recovery/restoration of the corner.**

The original corner was established in 1864 by James Nowlin. Original bearing trees: tamarac, 2", S78°W, 45 links and a birch, 10", N40°E, 8 links. In 1908, Dorr said: "used -evidently OK". In the 1930's resurvey of this township, Hintz said: "orig. 1/4 cor. Orig birch BT 10", N40°E, 8 links". 10/30/07 Dave Tlusty found the 1930's monument, frost heaved and leaning. Re-dug it so top is now 0.7' above ground. Accepted it as the best evidence of the original corner location.

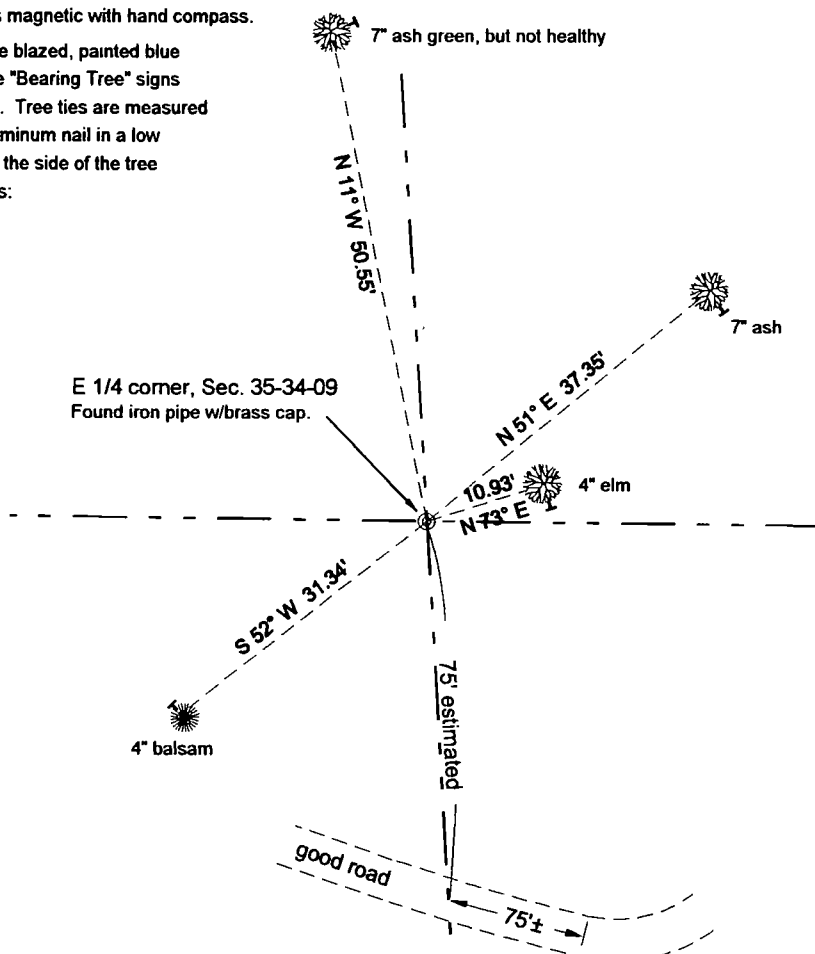
**Physical description of the monument set:**

Re-dug and straightened the 1930's monument, a 4" dia x 36" concrete filled pipe with brass cap.  
Set a white vinyl sign post within one foot of corner monument.

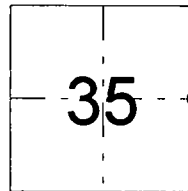
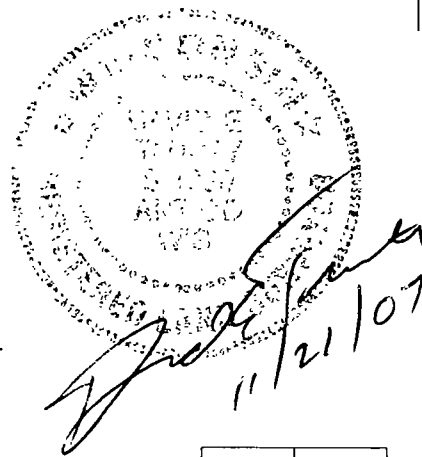
**Describe the accessories used to perpetuate the corner. Include a plan view drawing and accessories found/set. Describe measuring point on bearing trees. Show any topographic features that would aid in future recovery of the corner.**

Bearings magnetic with hand compass.

Trees are blazed, painted blue and have "Bearing Tree" signs attached. Tree ties are measured to an aluminum nail in a low blaze on the side of the tree shown as:



Field book 17-12



O = corner perpetuated

The East Quarter corner of Section 35, T. 34 N., R. 9 E., Langlade County, WI

I, David E Tlusty, Registered Land Surveyor, as Langlade County Surveyor, certify that the corner location on this record was determined by me and that this U S Public Land Survey Monument Record is correct to the best of my knowledge and belief.

Index No.

X 21 ~~183~~ 34-09