

CERTIFIED LAND CORNER RESTORATION

Index No. C-21

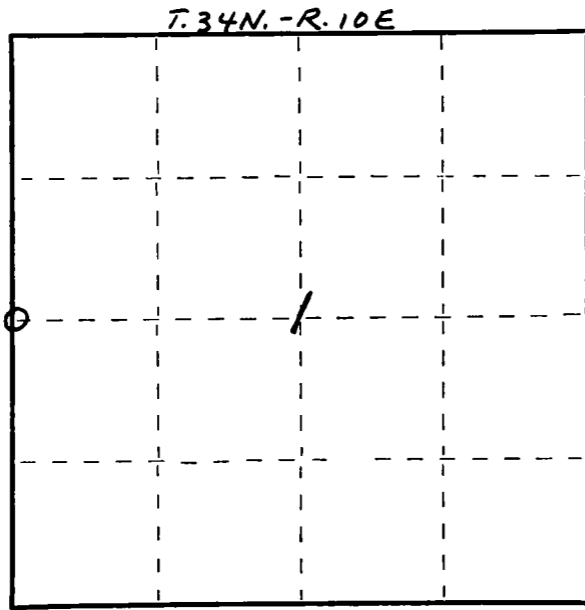
State of Wisconsin }  
 County of LANGLADE } ss.

I WILLIAM F. KELLY, do hereby certify that on the 23<sup>RD</sup> day of DECEMBER, 1976, I found evidence of the W 1/4 corner of SECTION 1 & 2 Township 34, North, Range 10 E, Fourth Principal Meridian, as described hereon; and that from this evidence I established a new monument and accessories as described hereon to perpetuate the original location of this corner.

Resident witnesses:

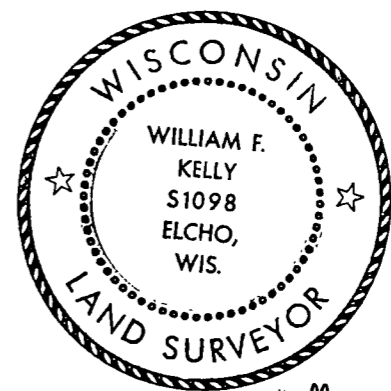
D. KELLY

FORM 985 M. C. MILLER CO., MILWAUKEE



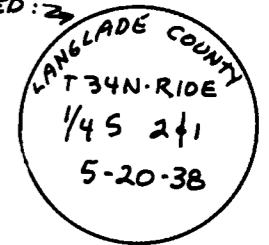
○ = Corner monument restored.

History of original corner establishment:



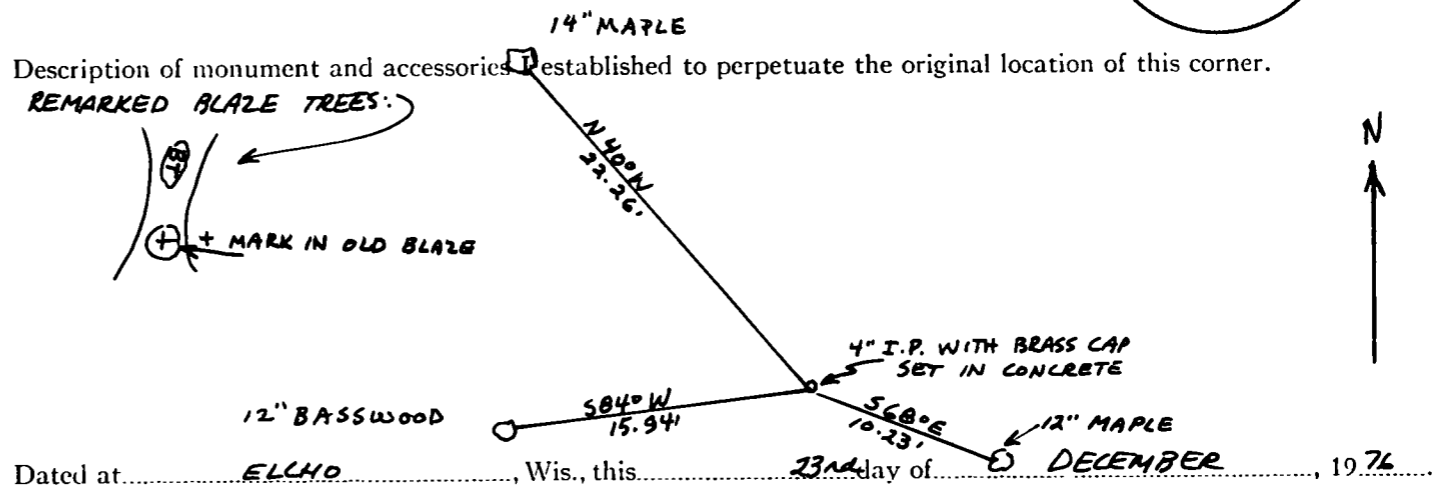
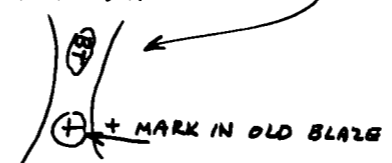
Description of corner evidence found: 4" IRON PIPE WITH BRASS CAP SET IN CONCRETE. W 1/8 CORNER SET ON 1938 SURVEY OF TWP. MARKED: 2

*William F. Kelly 12-23-76*



Description of monument and accessories established to perpetuate the original location of this corner.

REMARKED BLAZE TREES:



Dated at ELCHO, Wis., this 23<sup>RD</sup> day of DECEMBER, 1976

Signature William F. Kelly Title REGISTERED LAND SURVEYOR Registration No. 51098  
 (County Surveyor, Registered Land Surveyor, or other duly authorized official)

Office of Register of Deeds, County of \_\_\_\_\_, I hereby certify that the within instrument was filed in this office for record on the \_\_\_\_\_ day of \_\_\_\_\_, 19\_\_\_\_ at \_\_\_\_\_ o'clock \_\_\_\_\_ M.

(Register of Deeds)

By \_\_\_\_\_ Deputy