

CERTIFIED LAND CORNER RESTORATION



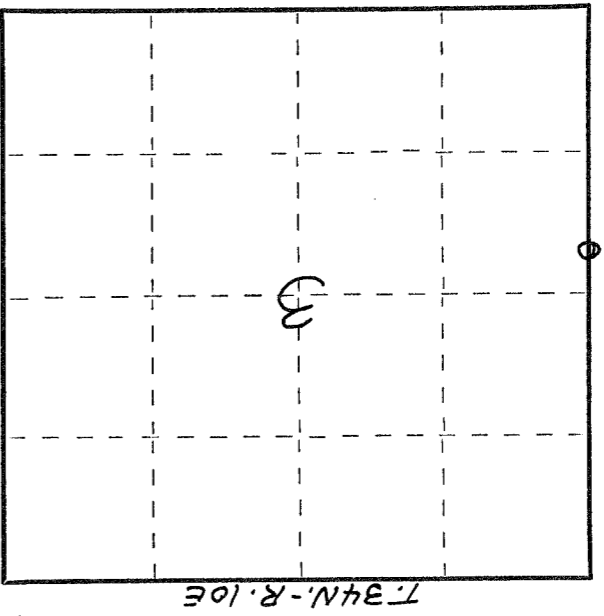
History of original corner establishment:
 Description of corner evidence found:
 William F. Kelly 12-30-76
 LOCATED MEANDER CORNER IRON PIPE WITH BRASS CAP SET ON 1937 RESURVEY.
 CORNER IS LOCATED ON NORTH SHORE OF LAKE.

State of Wisconsin }
 County of LANGLADE } ss.

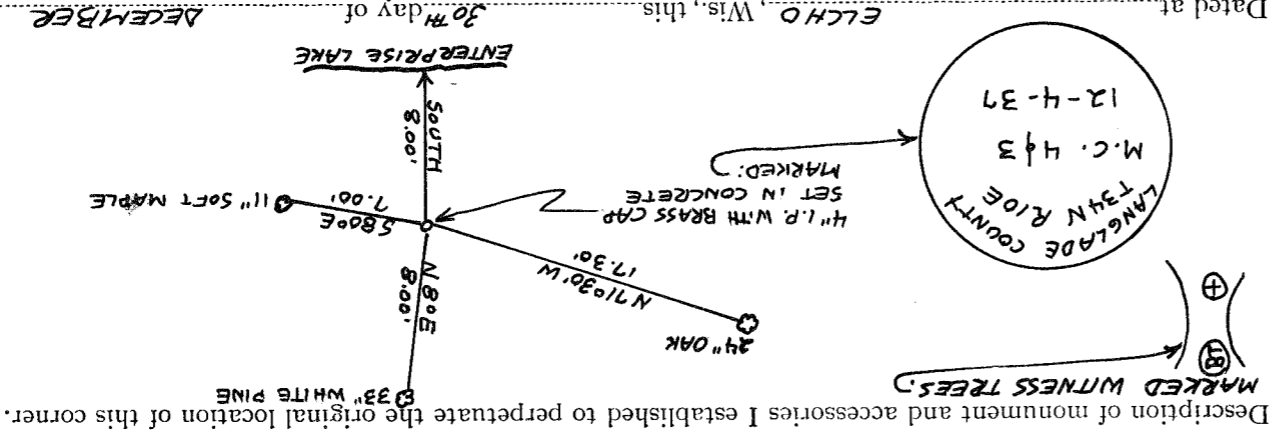
I WILLIAM F. KELLY, do hereby certify that on the 30TH day of DECEMBER, 1976, I found evidence of the MEANDER corner of SECTIONS 4 & 3 Township 34, North, Range 10E, Fourth Principal Meridian, as described hereon; and that from this evidence I established a new monument and accessories located hereon to perpetuate the original location of this corner.

Resident witnesses:

.....



○ = Corner monument restored.



Description of monument and accessories I established to perpetuate the original location of this corner.
 MARKED WITNESS TREES.
 4" I.P. WITH BRASS CAP SET IN CONCRETE MARKED:
 M.C. 4 1/3
 LANGLADE COUNTY
 T34N R10E
 12-4-37

Dated at ELCHO, Wis., this 30TH day of DECEMBER, 1976

Signature William F. Kelly Title REGISTERED LAND SURVEYOR Registration No. 51098
 (County Surveyor, Registered Land Surveyor, or other duly authorized official)
 Office of Register of Deeds, County of ELCHO, I hereby certify that the within instrument was filed in this office for record on the 30TH day of DECEMBER, 1976 at o'clock M.

By (Register of Deeds)
 Deputy