

# LANGLADE COUNTY U.S. PUBLIC LAND CORNER RESTORATION

The East 1/4 corner of Section 7, T. 34 N., R. 10 E., Langlade County, WI.

4341007 2000

Corner was: (check all that apply)

- Restored through acceptance of an obliterated evidence location.
- Restored through acceptance of a found perpetuated location.
- Determined to be lost and re-established through proportionate methods  
Show bearings and distances to PLSS corners used for proportioning, and show original distances).
- Restored/recovered/re-established in a location that differs from a previously established position.  
(Show difference in plan view below).
- Check here if addition information is shown on the reverse side of this form.

**Describe record evidence, recovered physical evidence, occupational evidence, testimonial evidence and all other evidence considered in the recovery/restoration of the corner.**

The original corner was established in 1865 by James L. Nowlin. Original bearing trees: birch, 6", N45°W, 17 lks., and a birch, 6", S65°E, 3 lks. In 1937 Hintz described this corner as: "To original 1/4 corner, remains of original BT birch, 12", S50°E, 24 lks. New BO: stone, West, 14.1 lks." In 1975, former surveyor Kelly found 4" brass cap set in concrete in a pipe (iron). Corner is located on edge of a ridge in a stand of hardwoods. Made 3 new BT's: w. birch, 6", S57°W, 11.30'; w. birch, 8", N63°W, 9.57' and a hard maple, 6", N61°E, 13.50'. On April 21, 1998 D. Tlusty, D. Williams found iron pipe with 4" brass cap, straightened it and made solid. Found 1937 stone with chiseled "x" on top, N86°W, 9.2'. Also found old fence north and west (both down) and all Kelly's B.T.'s. Accepted monument found as the best evidence of the original corner location and freshened with blue paint, added B.T. signs and aluminum tie nails in a new low blaze on the side of the trees and remeasured as shown below.

**Physical description of the monument set:**

For the corner, I left the existing monument in place.  
Set white vinyl sign post on the south side of the monument.

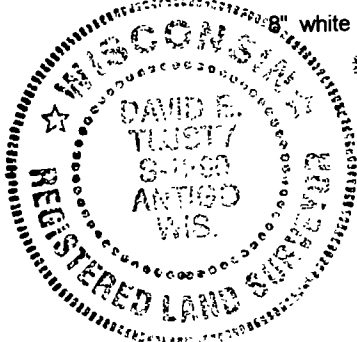
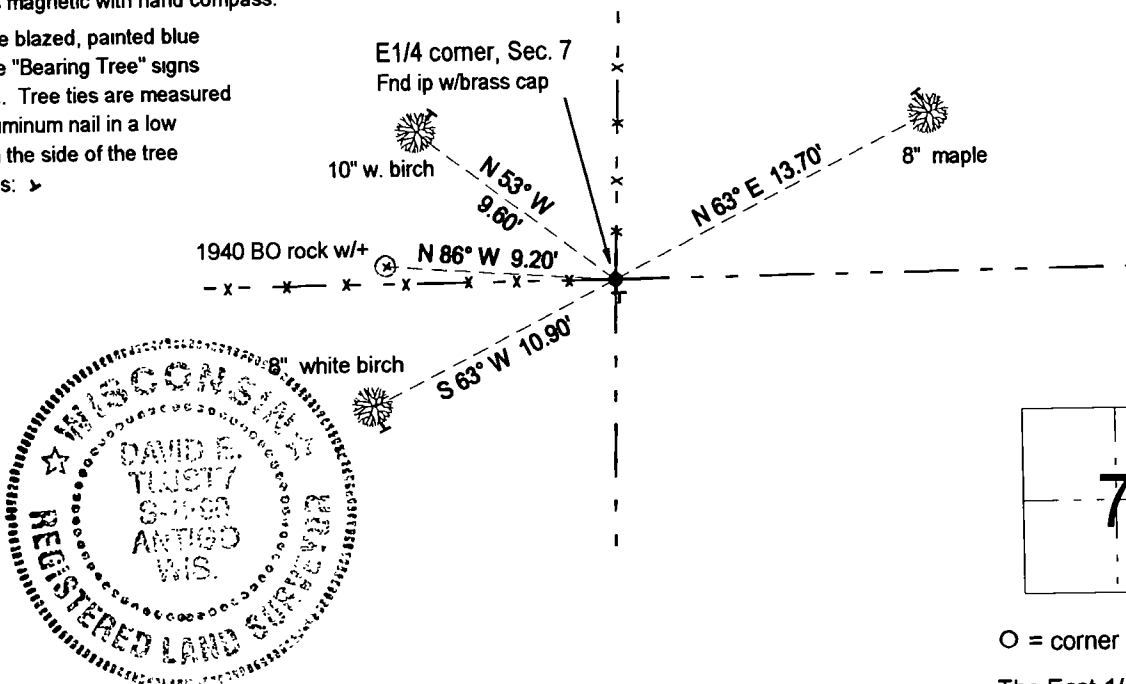
**Describe the accessories used to perpetuate the corner. Include a plan view drawing and accessories found/set. Describe measuring point on bearing trees. Show any topographic**

### LEGEND

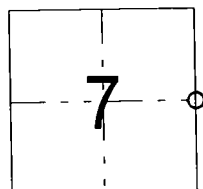
- 2" iron pipe found
- 4" iron pipe w. brass cap fnd  
(unless noted otherwise)
- ⊕ 3/4" x 30" re-bar set flush
- ⊥ white vinyl sign post set

Bearings magnetic with hand compass.

Trees are blazed, painted blue and have "Bearing Tree" signs attached. Tree ties are measured to an aluminum nail in a low blaze on the side of the tree shown as: >



FB 16-23



○ = corner perpetuated

The East 1/4 corner of Section 7, T. 34 N., R. 10 E., Langlade County, WI

Index No. G - 5 34-10

I, David E. Tlusty, Registered Land Surveyor, as Langlade County Surveyor, certify that the corner location on this record was determined by me and that this U.S. Public Land Survey Monument Record is correct to the best of my knowledge and belief.

CERTIFIED LAND CORNER RESTORATION

Index No. 6-5

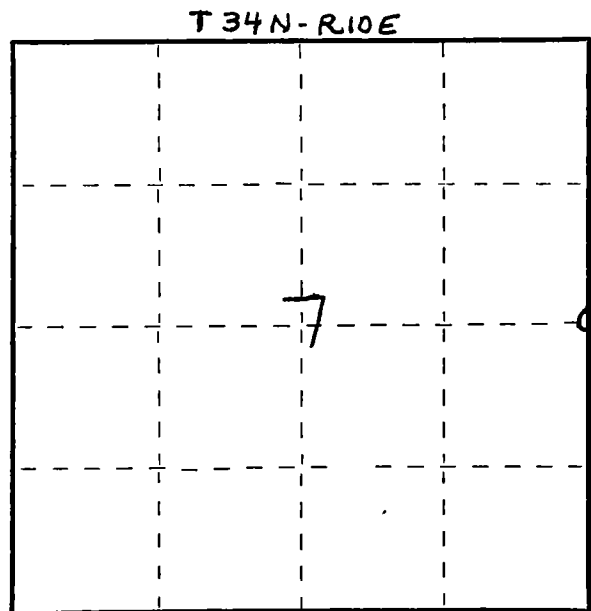
State of Wisconsin }  
County of LANGLADE } ss.

I WILLIAM F. KELLY, do hereby certify that on the 8th day of APRIL, 1975, I found evidence of the 1/4 SECTION corner of SECTION 7 & 8 Township 34 North, Range 10 EAST, Fourth Principal Meridian, as described hereon; and that from this evidence I established a new monument and accessories as described hereon to perpetuate the original location of this corner.

Resident witnesses:

J. DREW

FORM 985 H. C. MILLER CO., MILWAUKEE



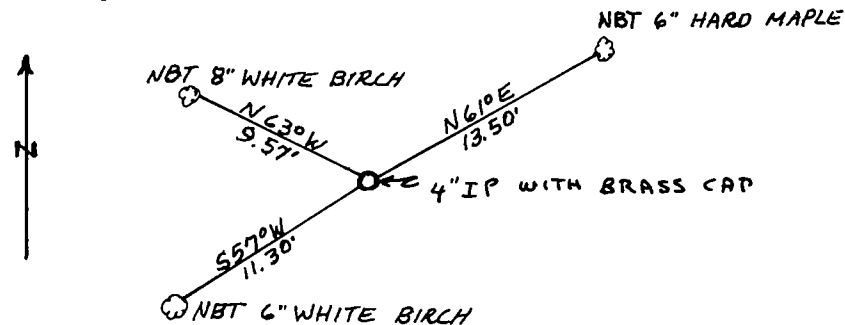
○ = Corner monument restored.

History of original corner establishment:

Description of corner evidence found:

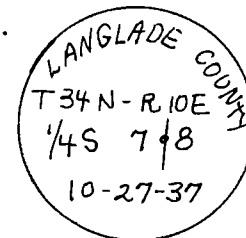
FOUND 4" BRASS CAP SET IN CONCRETE IN A 4" PIPE.  
CORNER LOCATED ON EDGE OF A RIDGE IN A STAND OF HARDWOODS.

Description of monument and accessories I established to perpetuate the original location of this corner.



4" BRASS CAP  
MARKED:  
CORNER WITNESSED  
WITH NEW BEARING  
TREES.

NBT BLAZED ON TRUNK AND A +  
MARK ON BASE OF NEW BEARING  
TREES.



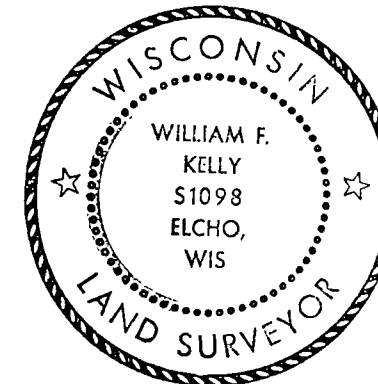
Dated at ELCHO, Wis., this 8th day of APRIL, 1975.

Signature: William F. Kelly Title: REGISTERED LAND SURVEYOR Registration No. S1098  
(County Surveyor, Registered Land Surveyor, or other duly authorized official)

Office of Register of Deeds, County of \_\_\_\_\_, I hereby certify that the within instrument was filed in this office for record on the \_\_\_\_\_ day of \_\_\_\_\_, 19\_\_\_\_ at \_\_\_\_\_ o'clock \_\_\_\_\_ M.

(Register of Deeds)

By \_\_\_\_\_ Deputy



William F. Kelly