

LANGLADE COUNTY U.S. PUBLIC LAND CORNER RESTORATION

The Southeast corner of Section 9, T. 34 N., R. 10 E., Langlade County, WI.

Corner was: (check all that apply)

4341009 0000

- Restored through acceptance of an obliterated evidence location.
- Restored through acceptance of a found perpetuated location.
- Determined to be lost and re-established through proportionate methods.
Show bearings and distances to PLSS corners used for proportioning, and show original distances)
- Restored/recovered/re-established in a location that differs from a previously established position.
(Show difference in plan view below).
- Check here if addition information is shown on the reverse side of this form

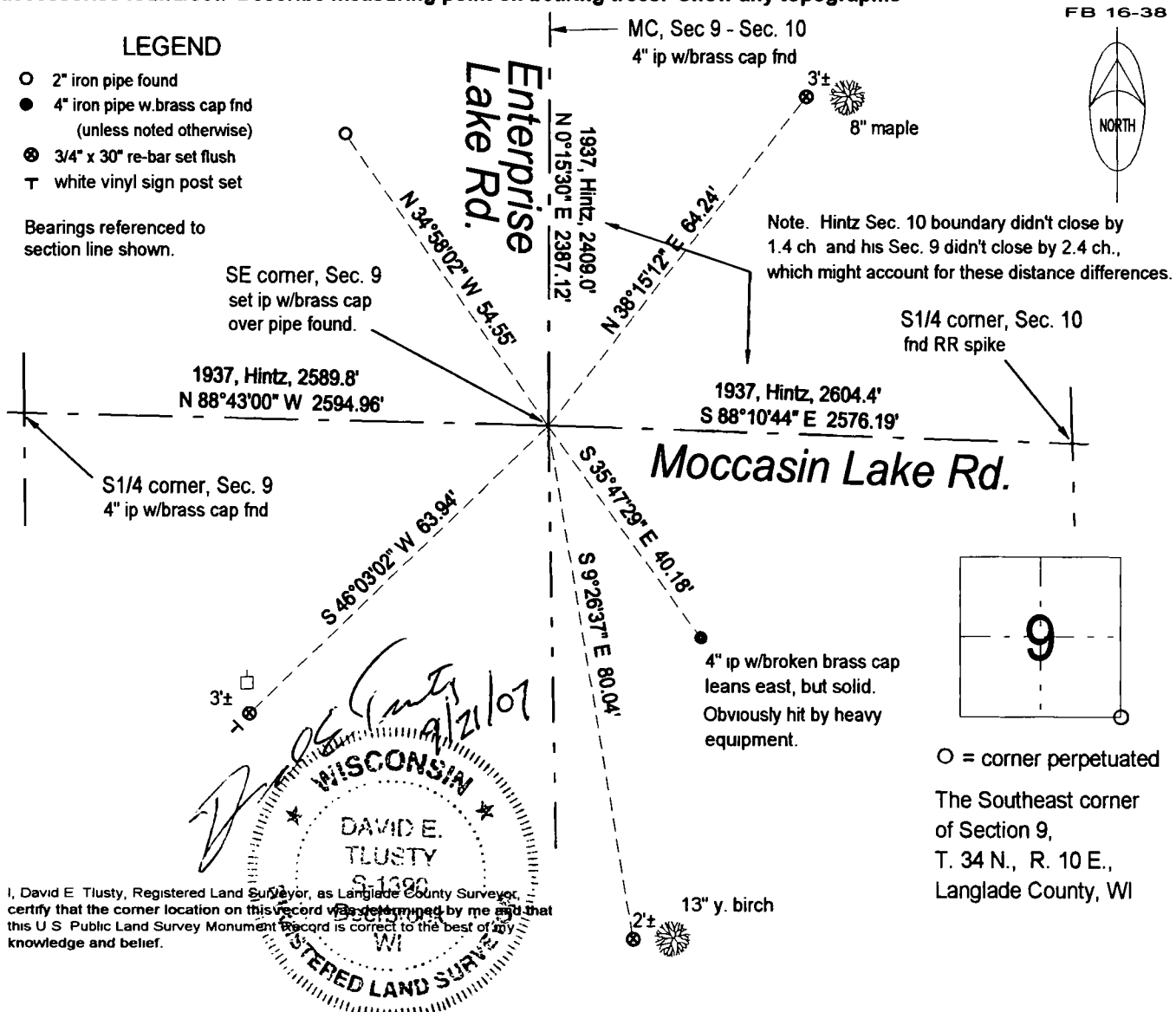
Describe record evidence, recovered physical evidence, occupational evidence, testimonial evidence and all other evidence considered in the recovery/restoration of the corner.

The original corner was established in 1865 by James L. Nowlin. Original bearing trees: sugar, 15", N35°W, 30 lks. and a sugar 10", N32°E, 30 lks. 1937, Darwin Hintz described this corner as: To section corner 10-15-16 -9 in road intersection N-S-E-W. Set witness corner brass cap S39°E 61.5 lks. (40.6'), made 2 new BO's: cross on stone, S33°W, 61.5 lks., and a cross on stone, N33°E, 53 lks. In June, 1978, former surveyor Kelly found the 4" iron pipe with brass cap as witness corner. Corner is at a road intersection. Set 1" iron pipe below road surface. Made 3 new BT's, and in 1985 he reset the corner after roadwork. In June, 1998, D. Tlusty, D. Williams found nail and cap in road, set temp. ties and dug in the road. Down 1.75' found a 1" iron pipe in good condition, left as found Accepted the 1" iron pipe as best evidence of corner location.

Physical description of the monument set:

For the corner, I topped the found iron pipe with a 1 1/2" x 19" iron pipe with 4" brass cap flush with road. The corner is approx. 13 feet north of the center of pavement on Moccasin Lake Rd. and approx. 3 feet east of the center of pavement of Enterprise Lake Rd.

Describe the accessories used to perpetuate the corner. Include a plan view drawing and accessories found/set. Describe measuring point on bearing trees. Show any topographic



I, David E. Tlusty, Registered Land Surveyor, as Langlade County Surveyor, certify that the corner location on this record was determined by me and that this U.S. Public Land Survey Monument Record is correct to the best of my knowledge and belief.

Index No. J-13 34-10

U. S. PUBLIC LAND SURVEY MONUMENT RECORD

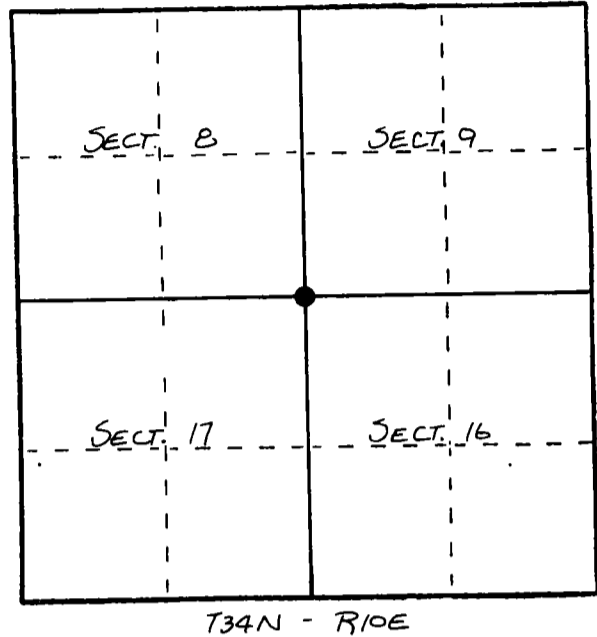
INSTRUCTIONS: This record shall show the location of the corner and shall include all of the following nine elements (a through i).

- (a) Identify the corner by reference to the U.S. public land survey system.
 O = Corner monument restored.

ORIGINAL CORNER ESTABLISHED BY
 JAMES NOWLIN IN JULY, 1865.

CORNER PERPETUATED ON 1937 RESURVEY
 AND WITNESSED IN 1978.

CORNER RESET AFTER ROADWORK IN 1985.

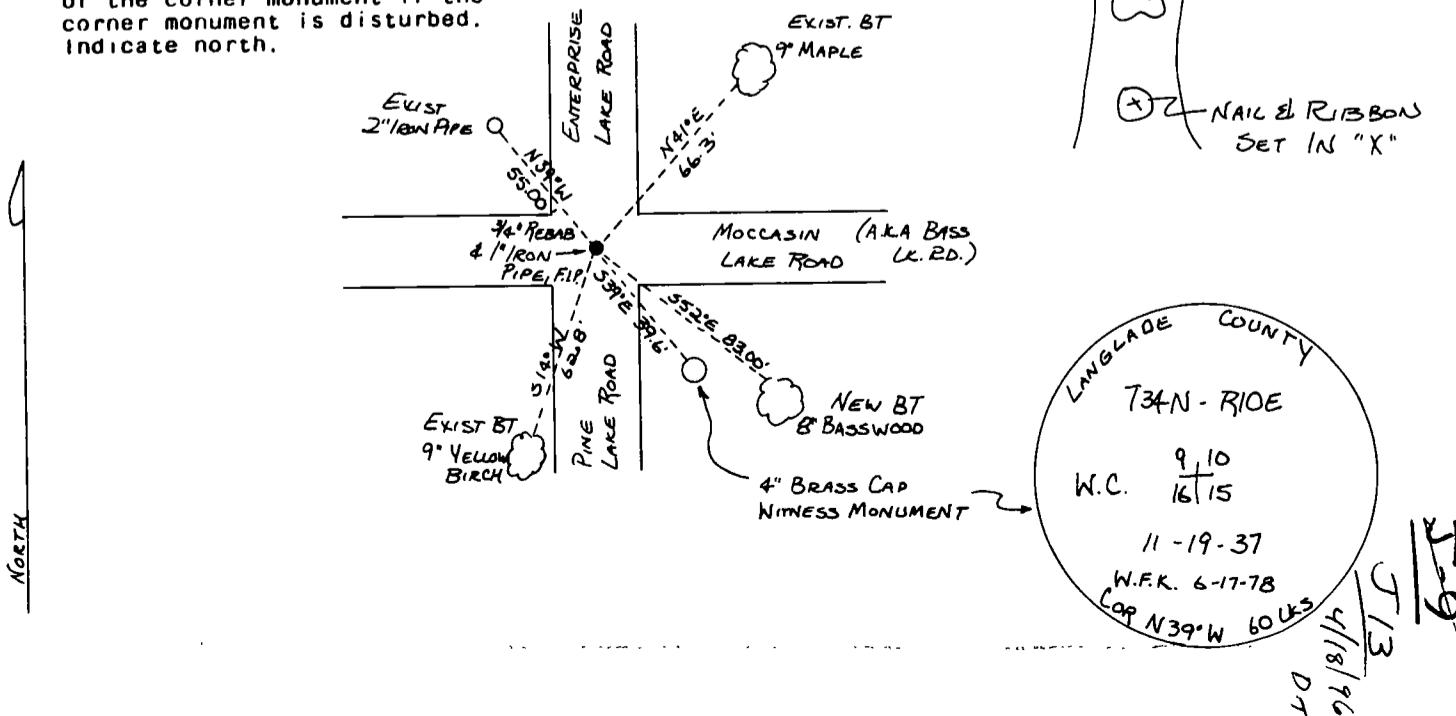


- (b) Describe any record evidence, monument evidence, occupational evidence, testimonial evidence or any other material evidence you considered, and whether the monument was found or placed.

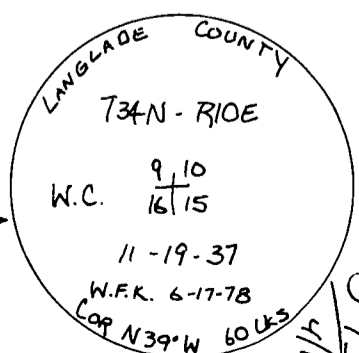
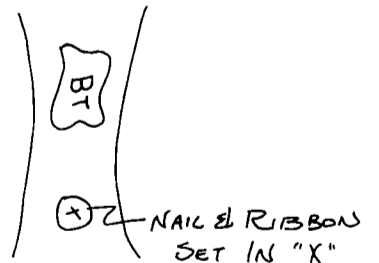
MARKED NEW BT.
 ALL OTHER MONUMENTS, FOUND IN PLACE.

- (c) In the plan view drawing below, provide reference ties to at least 4 witness monuments, or, if the location is within a municipality, to at least 2 witness monuments. (Witness monuments shall be made of concrete, natural stone, iron or other equally durable material.) Describe witness monuments.

- (d) Show a plan view drawing depicting the relevant monuments and reference ties which is sufficient in detail to enable accurate relocation of the corner monument if the corner monument is disturbed. Indicate north.



BT's:



5/13
 4/18/96
 DT

(e) Describe any material discrepancy between the location of the corner as restored or reestablished and the location of that corner as previously restored or reestablished by distance and direction. Show the discrepancy on the plan view drawing under (d), above. Show the distances between the corner as previously restored or reestablished and (1) the corner as restored or reestablished, and (2) to at least 2 of the witness monuments shown on the drawing in (d), above.

NONE

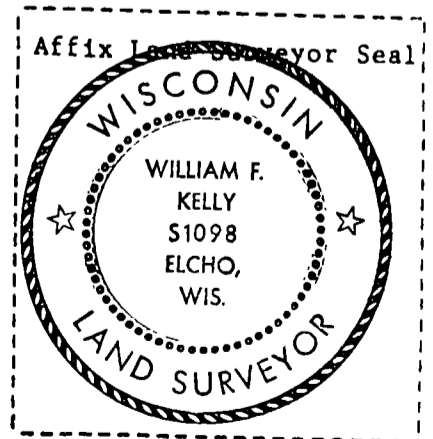
(f) Was the corner restored through acceptance of (1) an obliterated evidence location, or, (2) a found perpetuated location?

(2)

(g&h) Was the corner reestablished through lost corner proportionate methods? If so, show the method, including the directions and distances to other public land survey corners used as evidence or used for proportioning in determining the corner location?

No.

(1) 1. WILLIAM F KELLY
(type or print name) certify that the corner location shown on this record was determined by me or under my direction and control and that this U.S. Public Land Survey Monument Record is correct and complete to the best of my knowledge and belief.



William F. Kelly
Signature

6-2-87
Date

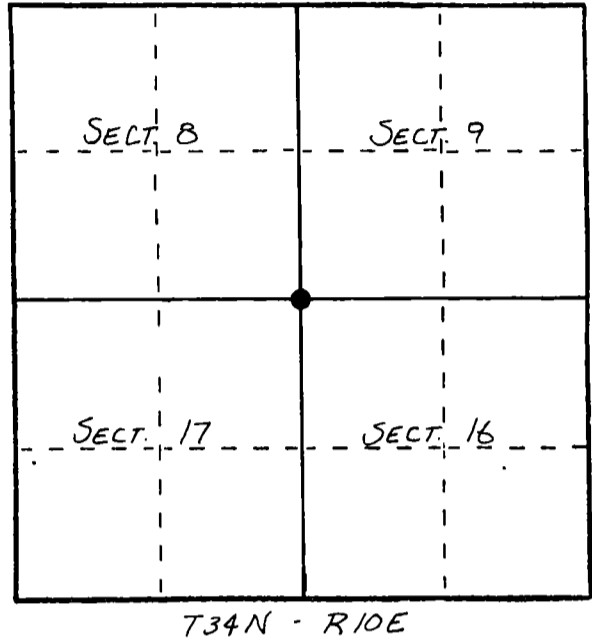
U. S. PUBLIC LAND SURVEY MONUMENT RECORD

INSTRUCTIONS: This record shall show the location of the corner and shall include all of the following nine elements (a through i).

- (a) Identify the corner by reference to the U.S. public land survey system.
 O = Corner monument restored.

ORIGINAL CORNER ESTABLISHED BY
 JAMES L. NOWLIN IN JULY, 1865.

CORNER PERPETUATED
 ON 1937 RESURVEY
 AND WITNESSED IN
 1978

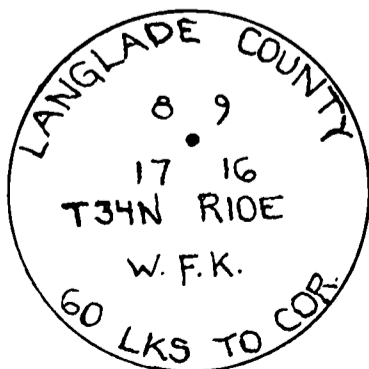


- (b) Describe any record evidence, monument evidence, occupational evidence, testimonial evidence or any other material evidence you considered, and whether the monument was found or placed.

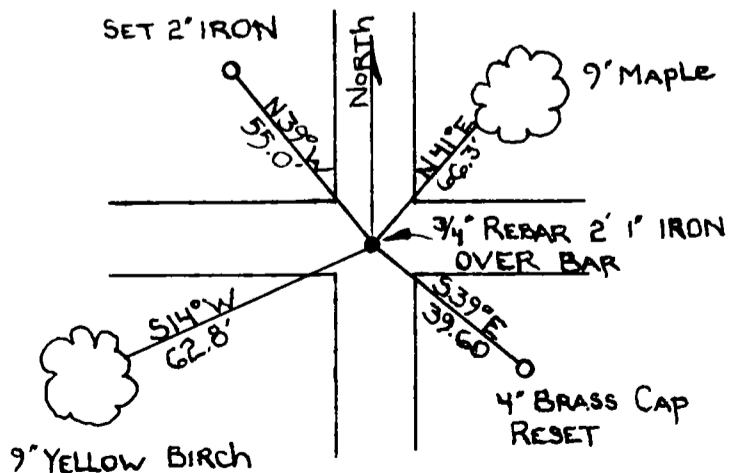
RESET CORNER AFTER ROADWORK.
 SET 3/4" x 24" REBAR, SET 1" IRON PIPE
 OVER REBAR, AS CORNER MONUMENT.
 SET 2" x 30" IRON PIPE & 4" BRASS CAP
 MONUMENT AS WITNESS MONUMENTS.
 SCRIBED 2 BT'S.

- (c) In the plan view drawing below, provide reference ties to at least 4 witness monuments, or, if the location is within a municipality, to at least 2 witness monuments. (Witness monuments shall be made of concrete, natural stone, iron or other equally durable material.)
 Describe witness monuments.

- (d) Show a plan view drawing depicting the relevant monuments and reference ties which is sufficient in detail to enable accurate relocation of the corner monument if the corner monument is disturbed. Indicate north.



4" FIP RESET
 AFTER ROAD WORK



~~19~~
 J13
 4/18/96
 D.F.

(e) Describe any material discrepancy between the location of the corner as restored or reestablished and the location of that corner as previously restored or reestablished by distance and direction. Show the discrepancy on the plan view drawing under (d), above. Show the distances between the corner as previously restored or reestablished and (1) the corner as restored or reestablished, and (2) to at least 2 of the witness monuments shown on the drawing in (d), above.

NONE

(f) Was the corner restored through acceptance of (1) an obliterated evidence location, or, (2) a found perpetuated location?

(2)

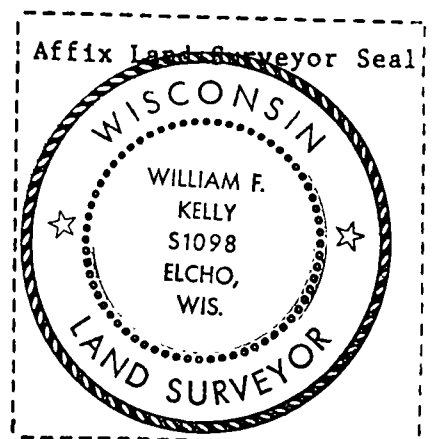
(g&h) Was the corner reestablished through lost corner proportionate methods? If so, show the method, including the directions and distances to other public land survey corners used as evidence or used for proportioning in determining the corner location?

No

(1) I, WILLIAM F KELLY
(type or print name) certify that the corner location shown on this record was determined by me or under my direction and control and that this U.S. Public Land Survey Monument Record is correct and complete to the best of my knowledge and belief.

William F. Kelly
Signature

9-17-85
Date



CERTIFIED LAND CORNER RESTORATION

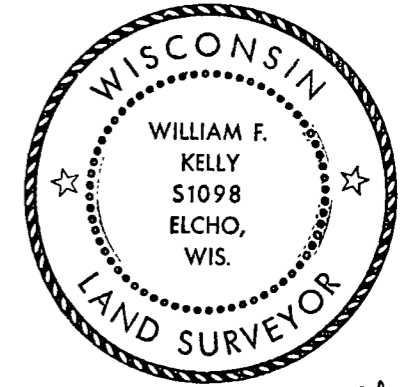
Index No. 9-13

State of Wisconsin }
County of LANGLADE } ss.

History of original corner establishment:

I WILLIAM F. KELLY, do hereby certify that on the 17 day of JUNE, 1978, I found evidence of the SOUTH-WEST corner of SECTION 10 Township 34, North, Range 10E, Fourth Principal Meridian, as described hereon; and that from this evidence I established a new monument and accessories as described hereon to perpetuate the original location of this corner.

Description of corner evidence found:
LOCATED WITNESS CORNER SET ON 1937 RE-SURVEY OF TOWNSHIP



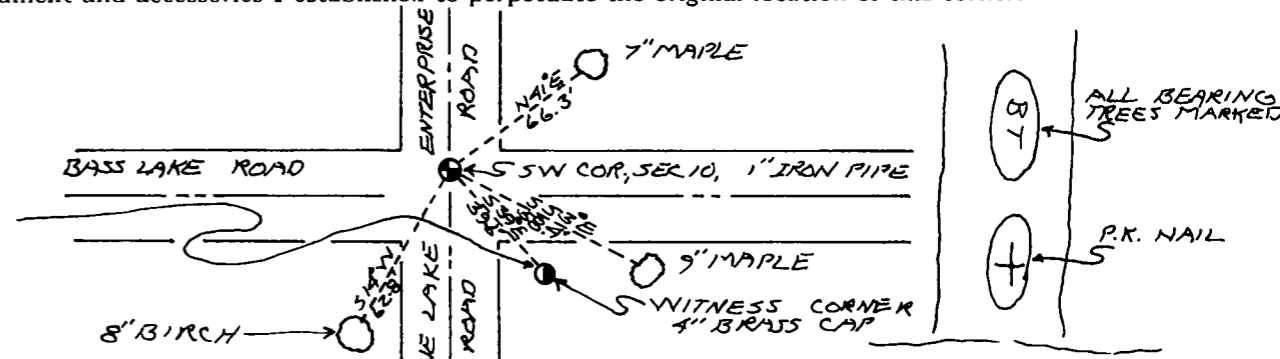
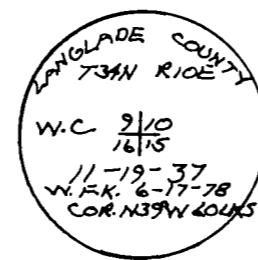
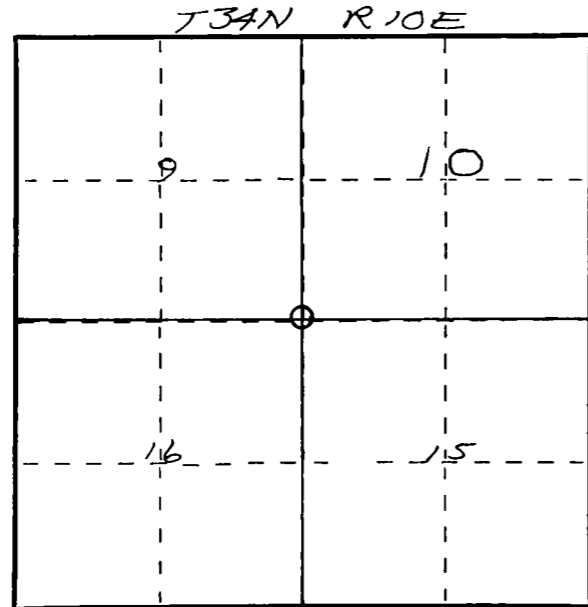
William F. Kelly

Resident witnesses:

SET 1" IRON PIPE BELOW ROAD SURFACE AND MARKED B.T.'s. ALSO INITIALIZED & DATED OLD BRASS CAP.

Description of monument and accessories I established to perpetuate the original location of this corner.

FORM 985 M. C. MILLER CO., MILWAUKEE



Dated at ELCHO, Wis., this 13 day of DECEMBER, 1978.

Signature William F. Kelly Title COUNTY SURVEYOR Registration No. 5-1098
(County Surveyor, Registered Land Surveyor, or other duly authorized official)

Office of Register of Deeds, County of....., I hereby certify that the within instrument was filed in this office for record on the.....day of....., 19..... at..... o'clock..... M.

(Register of Deeds)

By.....Deputy

○ = Corner monument restored.