

LANGLADE COUNTY U.S. PUBLIC LAND CORNER RESTORATION

The Meander corner of Sections 9 & 10, T. 34 N., R. 10 E., Langlade County, WI.

4341009 1800

Corner was: (check all that apply)

- Restored through acceptance of an obliterated evidence location
- Restored through acceptance of a found perpetuated location.
- Determined to be lost and re-established through proportionate methods.
Show bearings and distances to PLSS corners used for proportioning, and show original distances).
- Restored/recovered/re-established in a location that differs from a previously established position.
(Show difference in plan view below).
- Check here if addition information is shown on the reverse side of this form.

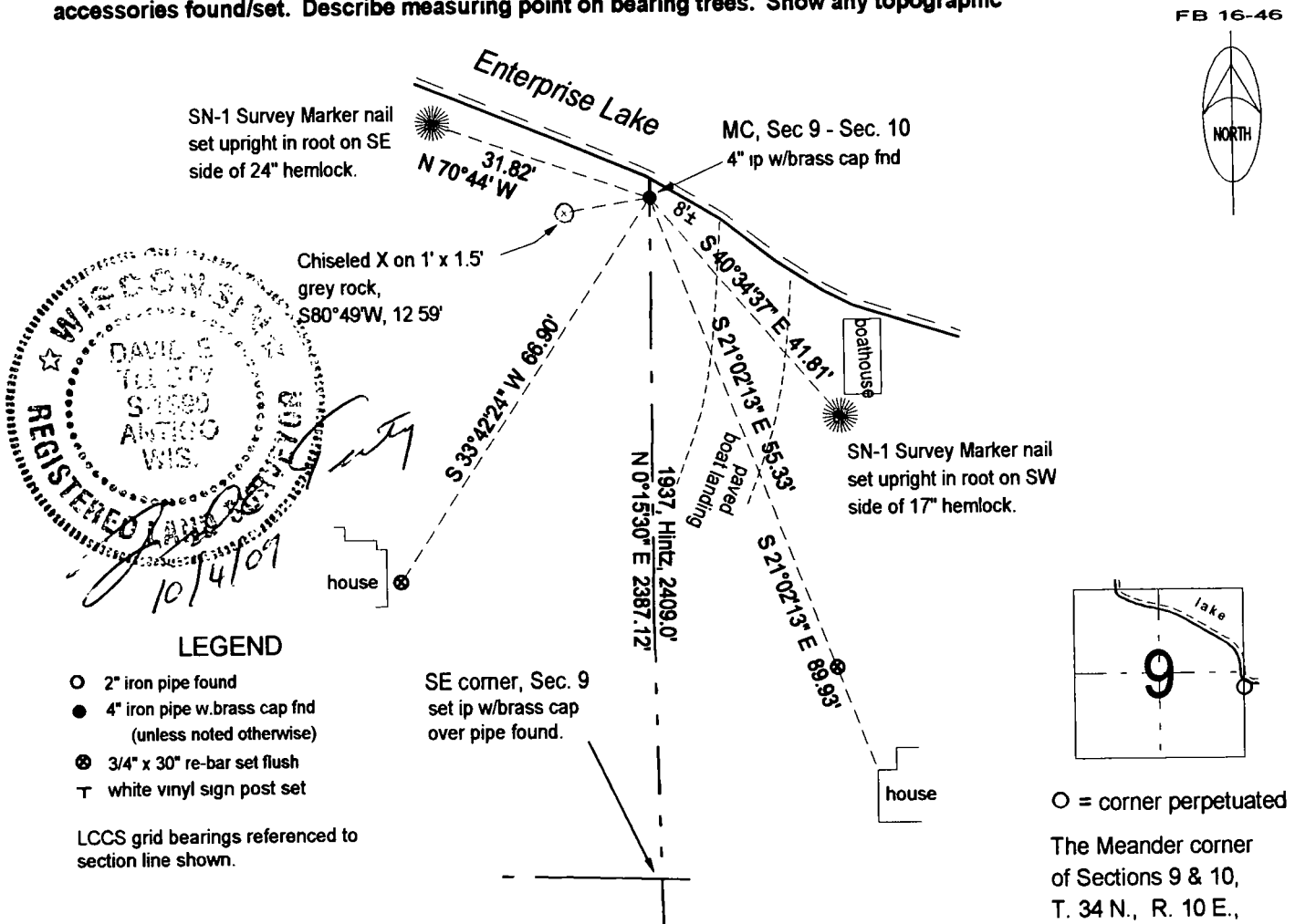
Describe record evidence, recovered physical evidence, occupational evidence, testimonial evidence and all other evidence considered in the recovery/restoration of the corner.

The original corner was established in 1865 by James L. Nowlin. Original bearing trees: birch, 10", N70°W, 15 lks., and a birch, 7", S20°E, 30 lks. In April 1923, Hutchinson noted one original BT, and an iron pipe for corner. In 1937, Darwin Hintz said: To original meander corner 9-10, on south side of Enterprise lake. Found original BT: birch, 10", N70°W, 15 lks. and made new BT, hemlock, 6", S?E 47.1 lks. In June 1998, D. Tlusty and D. Williams found 4 iron pipe with brass cap at shoreline severely leaning towards lake. Dug out along monument and straightened it back to the original position, then made temporary ties, removed it, dug out deeper and reset it so top is 0.5' above ground, instead of 1.5' as found. Monument is 3' south of waters edge, also 2.4' north of a concrete bench mark. monument with brass cap.

Physical description of the monument set:

For the corner, I re-set the existing monument as described above.
Set a white vinyl sign post 0.7' north of the corner monument.

Describe the accessories used to perpetuate the corner. Include a plan view drawing and accessories found/set. Describe measuring point on bearing trees. Show any topographic



I, David E. Tlusty, Registered Land Surveyor, as Langlade County Surveyor, certify that the corner location on this record was determined by me and that this U.S. Public Land Survey Monument Record is correct to the best of my knowledge and belief.