

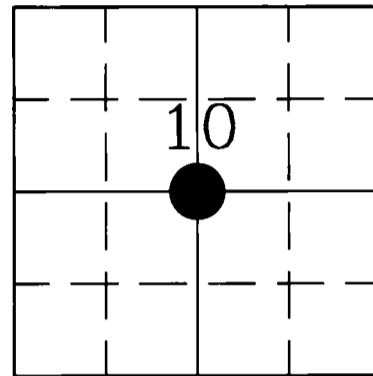
4341010 2020

U.S. PUBLIC LAND SURVEY MONUMENT RECORD

HISTORY OF ORIGINAL CORNER ESTABLISHMENT AND SUBSEQUENT RESTORATION AND DESCRIPTION OF ANY RECORD, MONUMENT OCCUPATIONAL, TESTIMONIAL OR OTHER EVIDENCE CONSIDERED:

THIS CORNER WAS NOT SET IN THE ORIGINAL PUBLIC SURVEY.
WILLIAM KELLY SHOWS A CENTER OF SECTION 10 AS A "BRASS CAP MON. FOUND IN PLACE" ON CSM VOL 3, PAGE 71.
ON AUGUST 16, 2006, DAN HIGGINBOTHAM AND GERRY BAHAR FOUND THE 2" BRASS CAPPED MONUMENT.
USING A LINE DRAWN FROM A BARB WIRE FENCE TO THE NORTH JUST SOUTH OF ENTERPRISE LAKE ROAD DOWN THROUGH THE CENTER OF SECTION, THE EXTENSION OF THIS LINE FALLS 10.64' EAST OF THE SOUTH 1/4 CORNER OF SECTION 10.
THE LOT CORNERS FROM CSM VOL3, PAGE 71, FALL WITHIN 0.40'. WE ACCEPTED THE MONUMENT'S LOCATION AND TIED IT OUT.

● = LOCATION OF CORNER






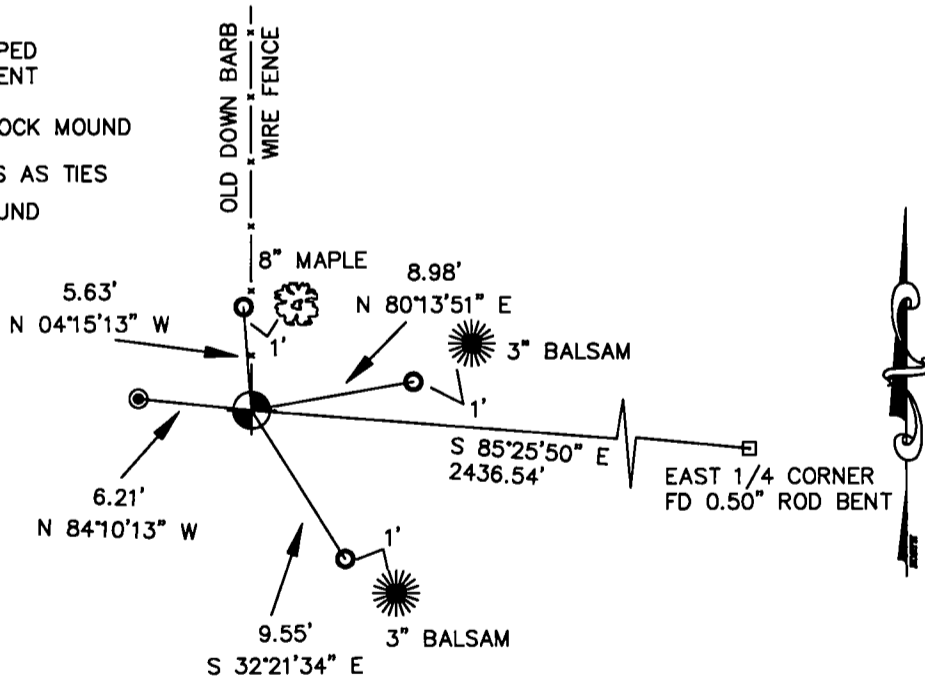
SECTION 10
TOWNSHIP 34 NORTH, RANGE 10 EAST
TOWN OF ELCHO
LANGLADE COUNTY, WISCONSIN

CORNER WAS: (CHECK ALL THAT APPLY)

- RESTORED THROUGH ACCEPTANCE OF AN OBLITERATED EVIDENCE LOCATION
- RESTORED THROUGH ACCEPTANCE OF A FOUND PERPETUATED LOCATION
- CONSIDERED A LOST CORNER AND REESTABLISHED THROUGH LOST CORNER PROPORTIONATE METHODS (INCLUDE A PLAN VIEW DRAWING SHOWING DISTANCES AND DIRECTIONS TO OTHER PUBLIC LAND SURVEY CORNERS USED FOR PROPORTIONING AND DETERMINING THE CORNER LOCATION)
- RESTORED OR REESTABLISHED IN A LOCATION THAT DIFFERS FROM A PREVIOUS RESTORATION OR REESTABLISHMENT (INCLUDE A PLAN VIEW DRAWING AND INDICATE WHAT WAS SET AND/OR FOUND)
- CHECK IF THERE IS ADDITIONAL INFORMATION ON BACK

DESCRIBE THE MONUMENT AND ACCESSORIES USED TO PERPETUATE THE LOCATION OF THE CORNER. (INCLUDE A PLAN VIEW DRAWING AND INDICATE WHAT WAS SET AND/OR FOUND) ALSO INCLUDE FOUR TIES TO THE SECTION CORNER AND DESCRIPTION OF THE TIES.

-  FOUND 2" BRASS CAPPED LANGLADE CO. MONUMENT
 -  FOUND 1.5" PIPE IN ROCK MOUND
 -  SET 3/4" X 24" REBARS AS TIES
- A 1.25" ROD WAS ALSO FOUND 0.20' NORTH OF MONUMENT

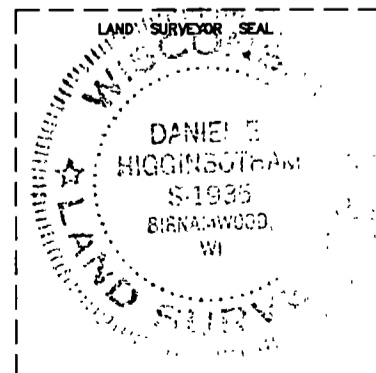


DANIEL E. HIGGINBOTHAM

(type or print name) CERTIFY THAT THE CORNER LOCATION SHOWN ON THIS RECORD WAS DETERMINED BY ME OR UNDER MY DIRECTION AND CONTROL AND THAT THIS U.S. PUBLIC LAND SURVEY MONUMENT RECORD IS CORRECT AND COMPLETE TO THE BEST OF MY KNOWLEDGE AND BELIEF.

Daniel E. Higginbotham
SIGNATURE

12/06/06
DATE



INDEX NO.

615

CERTIFIED LAND CORNER RESTORATION

34-10

Index No. G-15

State of Wisconsin }
County of Walworth } ss.

History of original corner establishment:

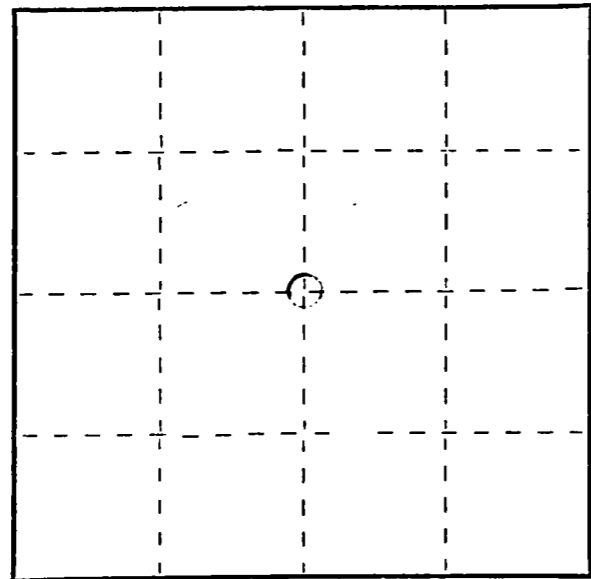
I, Raymond Valley, do hereby certify that on the 15 day of August, 1915, I found evidence of the original corner corner of Walworth Township North, Range 15, Fourth Principal Meridian, as described hereon; and that from this evidence I established a new monument and accessories as described hereon to perpetuate the original location of this corner.

Description of corner evidence found:

Resident witnesses:

.....
.....
.....

Description of monument and accessories I established to perpetuate the original location of this corner.



○ = Corner monument restored.

Dated at Walworth, Wis., this 15 day of August, 1915.

Signature Raymond Valley Title Reg. Land Surveyor Registration No. 5-685
(County Surveyor, Registered Land Surveyor, or other duly authorized official)

Office of Register of Deeds, County of Walworth, I hereby certify that the within instrument was filed in this office for record on the 15 day of August, 1915 at 10 o'clock AM.

.....
(Register of Deeds)

By..... Deputy

FORM 003 H. C. MILLER CO., MILWAUKEE

CERTIFIED LAND CORNER RESTORATION

Index No. G-15

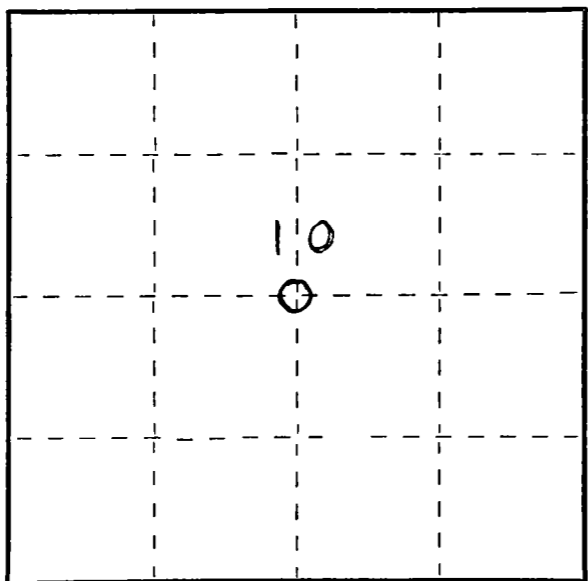
State of Wisconsin }
 County of LANGLADE } ss.

I WILLIAM F. KELLY, do hereby certify that on the 21st day of NOVEMBER, 1974, I found evidence of the CENTER corner of SECT. 10 Township 34, North, Range 10E, Fourth Principal Meridian, as described hereon; and that from this evidence I established a new monument and accessories as described hereon to perpetuate the original location of this corner.

Resident witnesses:

.....

T. 34N. - R. 10E.



○ = Corner monument restored.

History of original corner establishment:

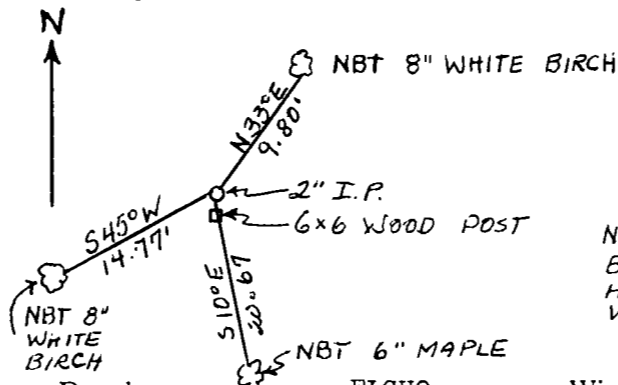
Description of corner evidence found:

LOCATED 6 x 6 SQUARED POST SCRIBED 1/4 S LYING ON GROUND NEXT TO A 1" STEEL ROD AND A 1 1/2" STEEL PIPE.



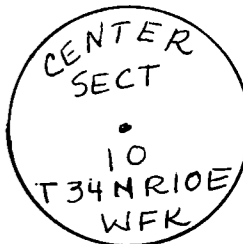
William F. Kelly

Description of monument and accessories I established to perpetuate the original location of this corner.



I SET A 2" BLACK IRON PIPE WITH A MARKED BRASS CAP. I RESET THE SCRIBED POST AS A WITNESS POST AND LEFT THE 1" ROD IN PLACE.

NEW BEARING TREES
 BLAZED NBT CHEST
 HIGH AND MARKED
 WITH A + AT BASE.



Dated at ELCHO, Wis., this 21st day of NOVEMBER, 1974

Signature William F. Kelly Title REGISTERED LAND SURVEYOR Registration No. S.1098
 (County Surveyor, Registered Land Surveyor, or other duly authorized official)

Office of Register of Deeds, County of _____, I hereby certify that the within instrument was filed in this office for record on the _____ day of _____, 19____ at _____ o'clock _____ M.

(Register of Deeds)

By _____ Deputy