

LANGLADE COUNTY U.S. PUBLIC LAND CORNER RESTORATION

The South Quarter corner of Section 14, T. 34 N., R. 10 E., Langlade County, WI.

Corner was: (check all that apply)

4341014 0020

- Restored through acceptance of an obliterated evidence location.
- Restored through acceptance of a found perpetuated location.
- Determined to be lost and re-established through proportionate methods.
- Show bearings and distances to PLSS corners used for proportioning, and show original distances).
- Restored/recovered/re-established in a location that differs from a previously established position.
- (Show difference in plan view below).
- Check here if additional information is shown on the reverse side of this form.

Describe record evidence, recovered physical evidence, occupational evidence, testimonial evidence and all other evidence considered in the recovery/restoration of the corner.

The original corner was established in 1859 by Hiram Fellows. Original bearing trees: tamarac, 10", N70W, 12 links and a tamarac, 9", S85W, 22 links.
 In the 1930's resurvey of part of this township, Hintz found both original BT's and marked a new cedar, 10", S28E, 14.2 links. On 03/21/2018, D. Tlusty and Luke Williams found the 1930's monument leaning a bit to the north and frozen into the ground. Found the 1930's BT as noted below and accepted the monument as evidence of the original corner location and at an estimated straightened position, I set a nail for the location of the corner. Perpetuated said locaitoin as described below but a more accurate re-setting of the monument in a plumbed orientation may result in a slightly different location and coordinates.

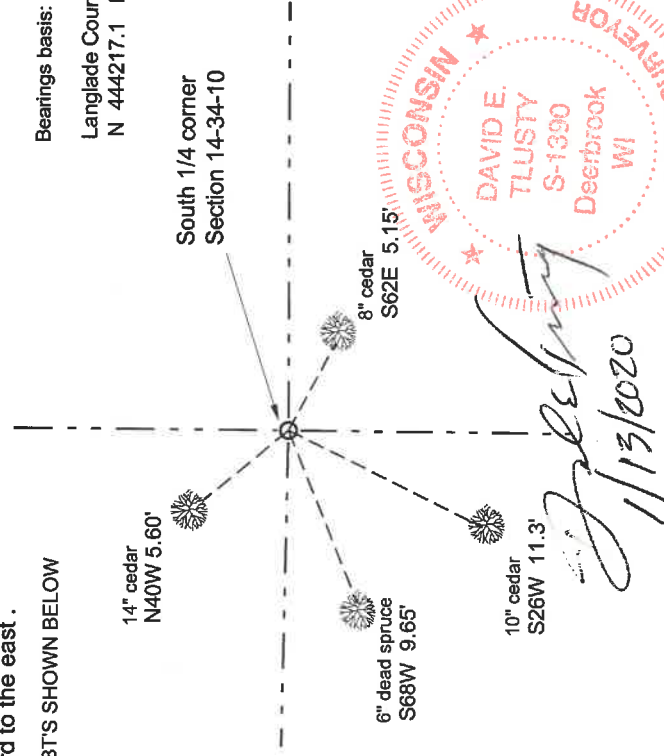
Physical description of the monument set:

For the corner, I left the existing monument in place - see above.

Describe the accessories used to perpetuate the corner. Include a plan view drawing and accessories found/set. Describe measuring point on bearing trees. Show any topographic features that would aid in future recovery of the corner.

Found original tamarac sitump at N70W, 8.8' and found 1930's cedar BT at S30E, 9.2', still green but leaning hard to the east.

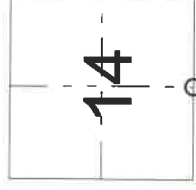
FOUND 60d NAILS IN 4 BT'S SHOWN BELOW



Bearings basis: magnetic, hand compass

Langlade County coordinates NAD83(2011)
 N 444217.1 E 606132.3

South 1/4 corner
 Section 14-34-10



O = corner perpetuated
 The South Quarter
 corner of Section 14,
 T. 34 N., R. 10 E.,
 Langlade County, WI

I, David E. Tlusty, Registered Land Surveyor, as Langlade County Surveyor, certify that the corner location on this record was determined by me and that this U.S. Public Land Survey Monument Record is correct to the best of my knowledge and belief.

Field book 25-40A



LEGEND

⊕ 4" iron pipe w brass cap found leaning a bit to the east.