

# LANGLADE COUNTY U.S. PUBLIC LAND CORNER RESTORATION

The East Quarter corner of Section 15, T. 34 N., R. 10 E., Langlade County, WI.

**Corner was: (check all that apply)**

4341015 2000

- Restored through acceptance of an obliterated evidence location.
- Restored through acceptance of a found perpetuated location.
- Determined to be lost and re-established through proportionate methods.
- Show bearings and distances to PLSS corners used for proportioning, and show original distances).
- Restored/recovered/re-established in a location that differs from a previously established position.
- (Show difference in plan view below).
- Check here if additional information is shown on the reverse side of this form.

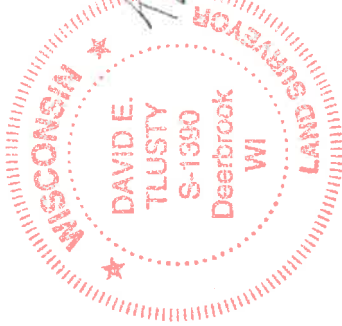
**Describe record evidence, recovered physical evidence, occupational evidence, testimonial evidence and all other evidence considered in the recovery/restoration of the corner.**

The original corner was established in 1859 by Hiram Fellows. Original bearing trees: tamarac, 8", N20W, 15 links and a tamarac, 8", N20W, (no dist in orig notes)  
 In the 1930's resurvey, Hintz said "to orig 1/4 cor. tam, 8", N20W"  
 In 1976, former surveyor Kelly: "located 4" iron pipe with brass cap in black spruce swamp. Pipe was lying on its side. Found a wood post under pipe. Reset pipe over wood post and marked witness trees".  
 On 3/21/18, D. Tlusty and Luke Williams found 4" iron pipe with brass cap. Monument is frozen into ground and leaning at a 45° angle to the southwest. For the corner, I set a nail at an estimated straightened position of the monument. Perpetuated said location as described below but a more accurate re-setting of the monument when the ground is thawed will most likely render a different position and coordinates.

**Physical description of the monument set:**

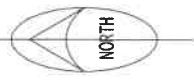
For the corner, I left the existing monument in place - see above.

**Describe the accessories used to perpetuate the corner. Include a plan view drawing and accessories found/set. Describe measuring point on bearing trees. Show any topographic features that would aid in future recovery of the corner.**



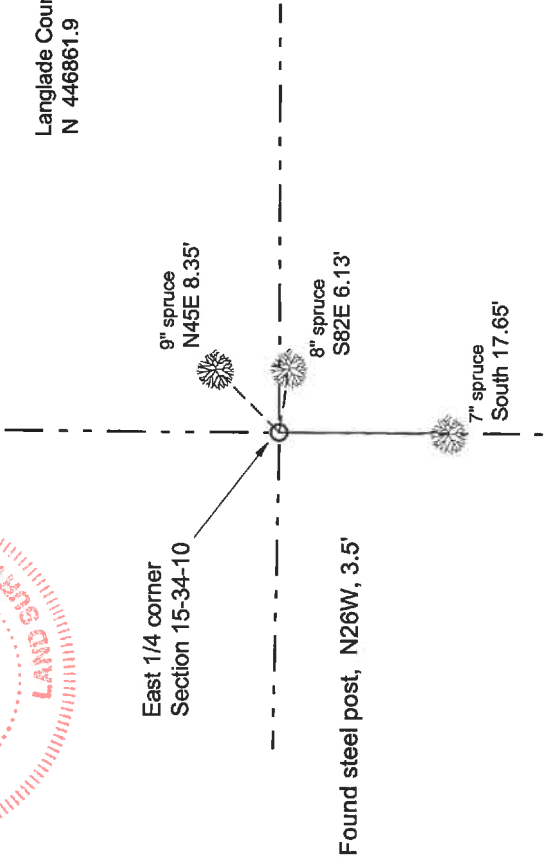
*David E. Tlusty*  
 11/5/2020

Field book 25-40



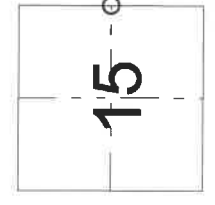
**LEGEND**

- ⊕ 4" iron pipe w brass cap found leaning a bit to the east.
- Bearing tree distances are measured to an aluminum nail in a low side blaze on the side of the tree shown: 4
- Trees have bearing tree signs facing the corner and are painted blue.
- Bearings basis: magnetic, hand compass



Langlade County coordinates NAD83(2011)  
 N 446861.9 E 603503.4

Index No.                      L 17 34-10



○ = corner perpetuated  
 The East Quarter corner of Section 15, T. 34 N., R. 10 E., Langlade County, WI

I, David E. Tlusty, Registered Land Surveyor, as Langlade County Surveyor, certify that the corner location on this record was determined by me and that this U.S. Public Land Survey Monument Record is correct to the best of my knowledge and belief.

CERTIFIED LAND CORNER RESTORATION

Index No. 6-17

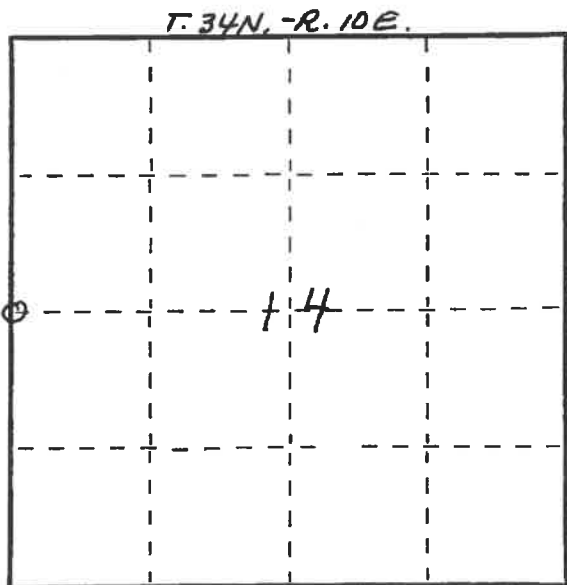
State of Wisconsin }  
County of LANGLADE } ss.

I WILLIAM F. KELLY, do hereby certify that on the 21<sup>ST</sup> day of DECEMBER, 1976, I found evidence of the 1/4 SECTION corner of SECTIONS 15 & 14 Township 34, North, Range 10E, Fourth Principal Meridian, as described hereon; and that from this evidence I established a new monument and accessories as described hereon to perpetuate the original location of this corner.

Resident witnesses:

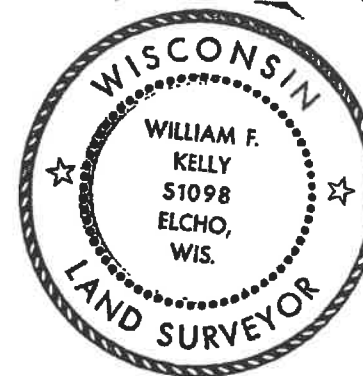
JOHN DREW

FORM 985 M. C. MILLER CO. MILWAUKEE



○ = Corner monument restored.

History of original corner establishment:

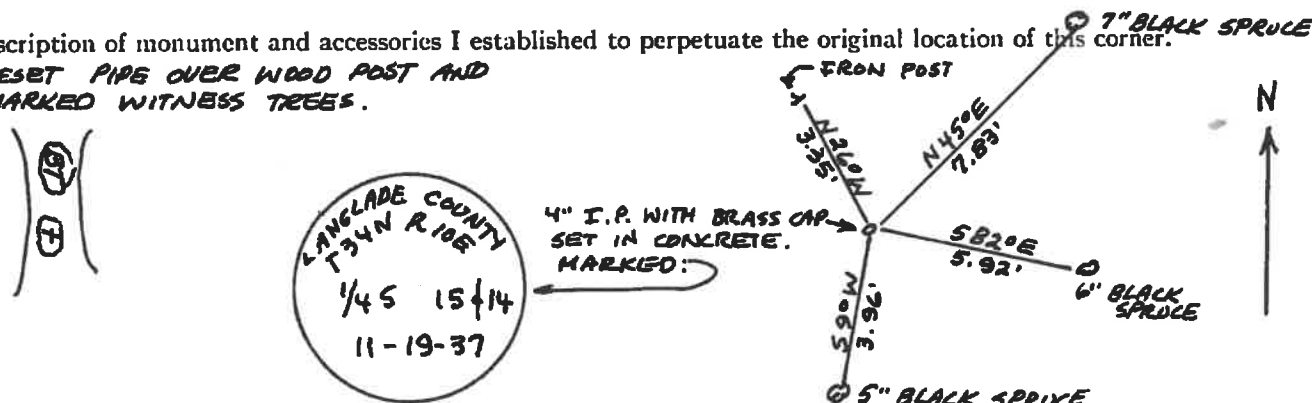


*William F. Kelly 12-21-76*

Description of corner evidence found:

LOCATED 4" IRON PIPE WITH BRASS CAP IN A BLACK SPRUCE SWAMP. PIPE WAS LYING ON ITS SIDE. FOUND A WOOD POST UNDER PIPE.

Description of monument and accessories I established to perpetuate the original location of this corner.  
RESET PIPE OVER WOOD POST AND MARKED WITNESS TREES.



Dated at ELCHO, Wis., this 21<sup>ST</sup> day of DECEMBER, 1976

Signature William F. Kelly Title REGISTERED LAND SURVEYOR Registration No. S1098  
(County Surveyor, Registered Land Surveyor, or other duly authorized official)

Office of Register of Deeds, County of \_\_\_\_\_, I hereby certify that the within instrument was filed in this office for record on the \_\_\_\_\_ day of \_\_\_\_\_, 19\_\_\_\_ at \_\_\_\_\_ o'clock \_\_\_\_\_ M.

(Register of Deeds)

By \_\_\_\_\_ Deputy