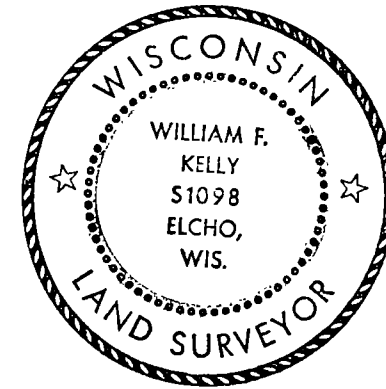


CERTIFIED LAND CORNER RESTORATION

Index No. M-5

State of Wisconsin }
County of LANGLADE } ss.

History of original corner establishment:



William F. Kelly

I WILLIAM F. KELLY, do hereby certify that on the 5th day of APRIL, 1975, I found evidence of the SECTION corner of SECTIONS 18, 17, 19, & 20 Township 34, North, Range 10 EAST, Fourth Principal Meridian, as described hereon; and that from this evidence I established a new monument and accessories as described hereon to perpetuate the original location of this corner.

Description of corner evidence found:

A 4" BRASS CAP SET ON OCTOBER 20, 1937.

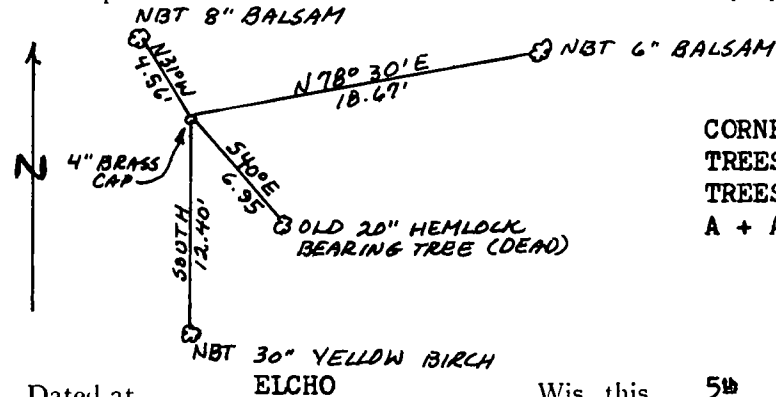
CORNER LOCATED APPROXIMATELY 650 FEET EAST OF THE W. ELCHO TOWN ROAD.

Resident witnesses:

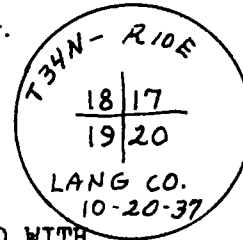
JOHN DREW

COLIN HANDEYSIDE

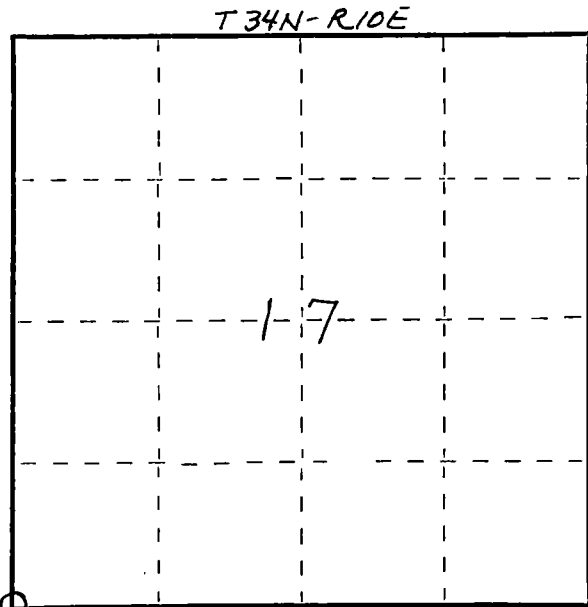
Description of monument and accessories I established to perpetuate the original location of this corner.



BRASS CAP MARKED:



CORNER WITNESSED WITH NEW BEARING TREES.
TREES BLAZED NBT ON TRUNK AND MARKED WITH A + AT BASE.



Dated at ELCHO, Wis., this 5th day of APRIL, 1975.

Signature William F. Kelly Title REGISTERED LAND SURVEYOR Registration No. S. 1098
(County Surveyor, Registered Land Surveyor, or other duly authorized official)

Office of Register of Deeds, County of _____, I hereby certify that the within instrument was filed in this office for record on the _____ day of _____, 19 _____ at _____ o'clock _____ M.

(Register of Deeds)

By _____ Deputy

○ = Corner monument restored.