

434/19 2000 1975

FORM 985 H. C. MILLER CO., MILWAUKEE

CERTIFIED LAND CORNER RESTORATION

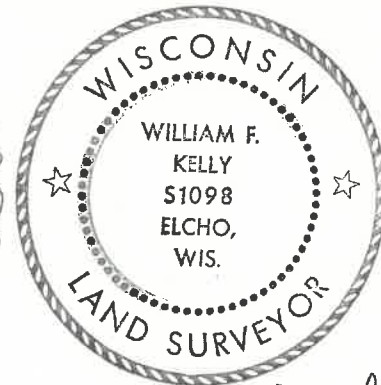
Index No. P-5

State of Wisconsin }  
County of LANGLADE } ss.

History of original corner establishment:

I WILLIAM F. KELLY, do hereby certify that on the 8<sup>th</sup> day of APRIL, 19 75, I found evidence of the 1/4 SECTION corner of Sections 19 & 20 Township 34, North, Range 10 East, Fourth Principal Meridian, as described hereon; and that from this evidence I established a new monument and accessories as described hereon to perpetuate the original location of this corner.

6/10/15 D. TRUSTY FOUND MONUMENT IN GOOD COND. OBSERVED COORDS:  
N 441504.38 ✓ NAD83(2011)  
E 588323.59 ✓



*William F. Kelly*

Description of corner evidence found:

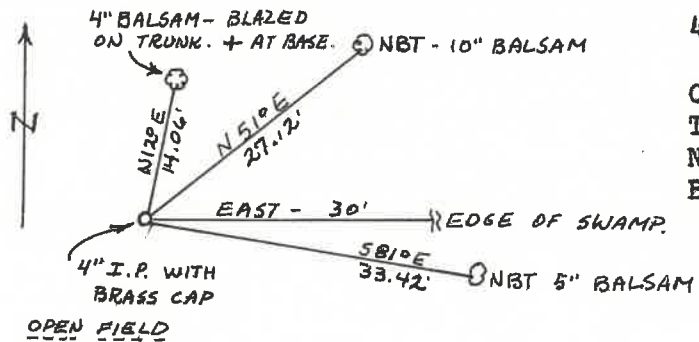
**4" BRASS CAP SET IN CONCRETE IN A 4" PIPE.**

**CORNER IS LOCATED IN AN OPEN FIELD WITH A BALSAM SWAMP TO THE EAST AND NORTH.**

Resident witnesses:

C. HANDEYSIDE

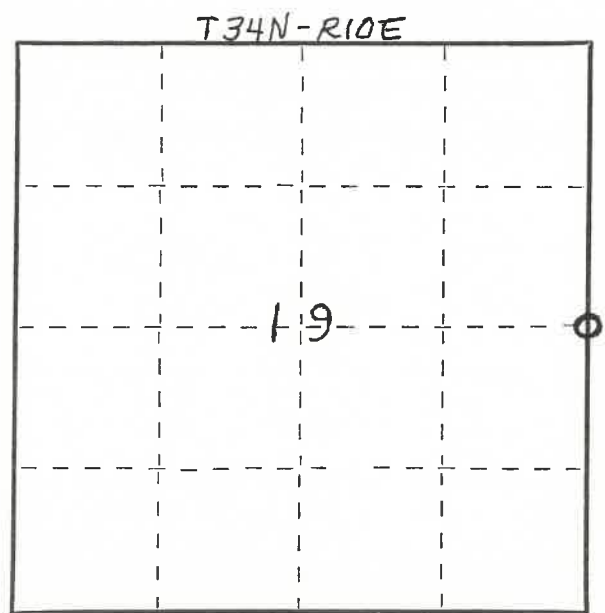
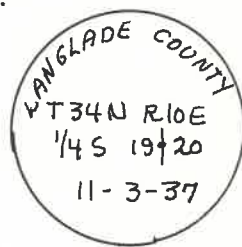
Description of monument and accessories I established to perpetuate the original location of this corner.



**4" BRASS CAP MARKED:**

**CORNER WITNESSED WITH NEW BEARING TREES.**

**NBT BLAZED ON TRUNK AND A + MARK ON BASE OF NEW BEARING TREES.**



○ = Corner monument restored.

Dated at ELCHO, Wis., this 8<sup>th</sup> day of APRIL, 19 75

Signature William F. Kelly Title REGISTERED LAND SURVEYOR Registration No. S 1098  
(County Surveyor, Registered Land Surveyor, or other duly authorized official)

Office of Register of Deeds, County of \_\_\_\_\_, I hereby certify that the within instrument was filed in this office for record on the \_\_\_\_\_ day of \_\_\_\_\_, 19 \_\_\_\_\_ at \_\_\_\_\_ o'clock \_\_\_\_\_ M.

(Register of Deeds)

By \_\_\_\_\_ Deputy