

CERTIFIED LAND CORNER RESTORATION

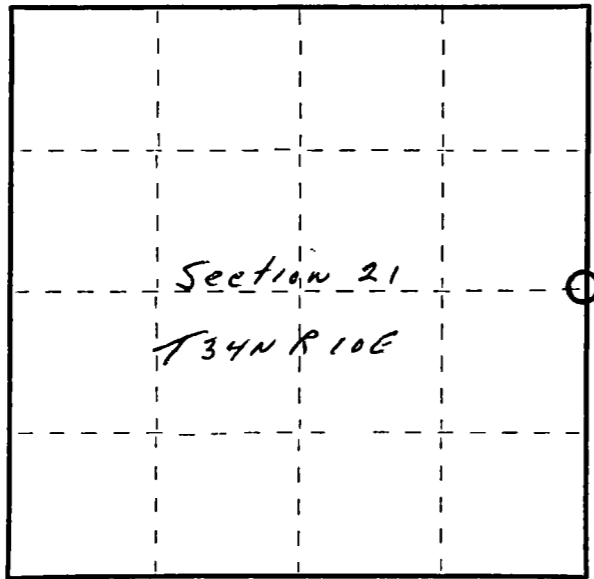
Index No. P-13

State of Wisconsin }
County of Lan. lade } ss.

I, Raymond J. Hallisy, do hereby certify that on the 4th day of April, 1981, I found evidence of the 1/4 corner of Section 21 & 22 Township 34, North, Range 10E, Fourth Principal Meridian, as described hereon; and that from this evidence I established a new monument and accessories as described hereon to perpetuate the original location of this corner.

Resident witnesses:

.....
.....
.....



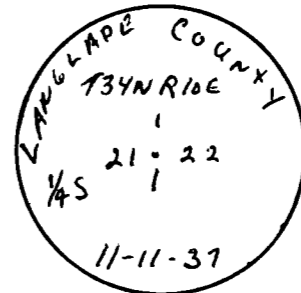
○ = Corner monument restored.

History of original corner establishment:

Corner set in the 1930 resurvey.

Description of corner evidence found:

4" iron pipe with brass cap, Rock mound.



Description of monument and accessories I established to perpetuate the original location of this corner.

New BT's

- 12" White Oak N6W 10'1"
- 5" Hard Maple N78W 23'3"
- 10" Hard Maple S54W 24'6"

Dated at Antigo, Wis., this 4th day of April, 1981

Signature Raymond J. Hallisy Title Reg. Land Surveyor Registration No. S-685
(County Surveyor, Registered Land Surveyor, or other duly authorized official)

Office of Register of Deeds, County of _____, I hereby certify that the within instrument was filed in this office for record on the _____ day of _____, 19____ at _____ o'clock _____ M.

.....
(Register of Deeds)

By _____ Deputy

FORM 985 H. C. MILLER CO., MILWAUKEE