

CERTIFIED LAND CORNER RESTORATION

34-10

Index No. 0-25

State of Wisconsin }
County of Langlade } ss.

I, Raymond J. Hallisy, do hereby certify that on the 4th day of May, 19 69, I found evidence of the N 1/16 corner of Section 24 & Section 19 Township 34, North, Range 10 & 11 E, Fourth, Principal Meridian, as described hereon; and that from this evidence I established a new monument and accessories as described hereon to perpetuate the original location of this corner.

History of original corner establishment:

Corner established in the 1930 resurvey.

Description of corner evidence found:

Found old stake down and point in ground.

Resident witnesses:

.....
.....
.....

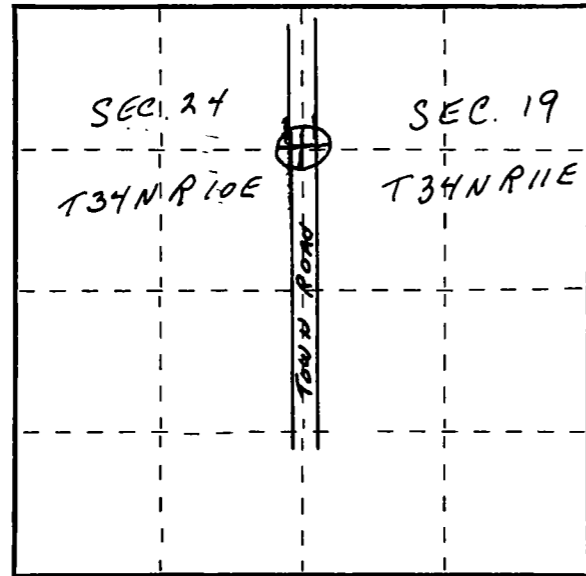
Description of monument and accessories I established to perpetuate the original location of this corner.

Set 2" pipe with brass cap and rock mound. This was set as a witness corner. True corner is 50 links west.

B.T.'s to witness corner
White Pine 1 1/2" S71W 71ft. 7 inches
Power pole stub 12" N80W 11ft 10 inches
B.T.'s faced at base and scribed BT



BRASS CAP MARKED



○ = Corner monument restored.

Dated at Antigo, Wis., this May day of 4th, 19 69

Signature Raymond J. Hallisy Title Reg. Land Surveyor Registration No. S-685
(County Surveyor, Registered Land Surveyor, or other duly authorized official)

Office of Register of Deeds, County of _____, I hereby certify that the within instrument was filed in this office for record on the _____ day of _____, 19 _____ at _____ o'clock _____ M.

(Register of Deeds)

By _____ Deputy

FORM 985 M. C. MILLER CO., MILWAUKEE