

CERTIFIED LAND CORNER RESTORATION

Index No. V-23

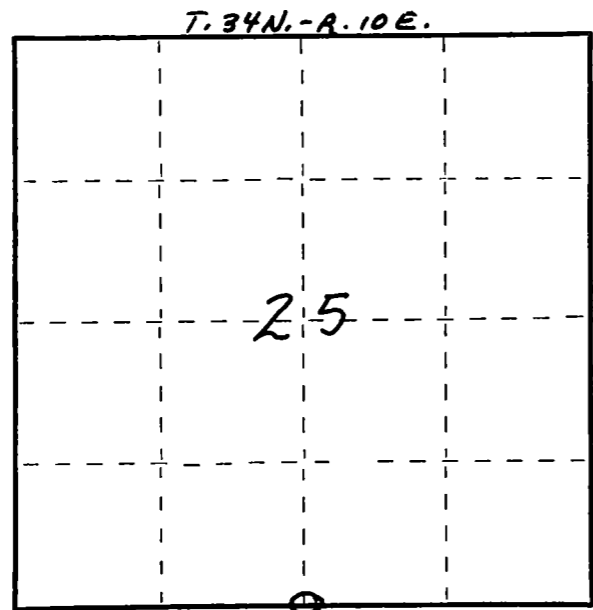
State of Wisconsin }
 County of LANGLADE } ss.

I WILLIAM F. KELLY, do hereby certify that on the 8TH day of DECEMBER, 1975, I found evidence of the 1/4 SECTION corner of SECTION 25 & 36 Township 34, North, Range 10 E, Fourth Principal Meridian, as described hereon; and that from this evidence I established a new monument and accessories as described hereon to perpetuate the original location of this corner.

Resident witnesses:

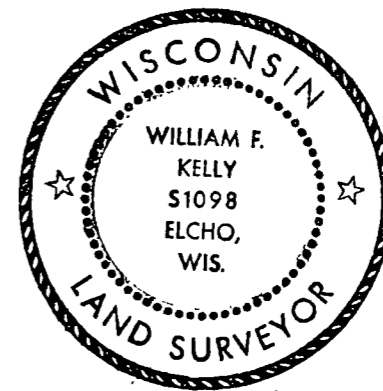
.....

FORM 985 H. C. MILLER CO., MILWAUKEE



○ = Corner monument restored.

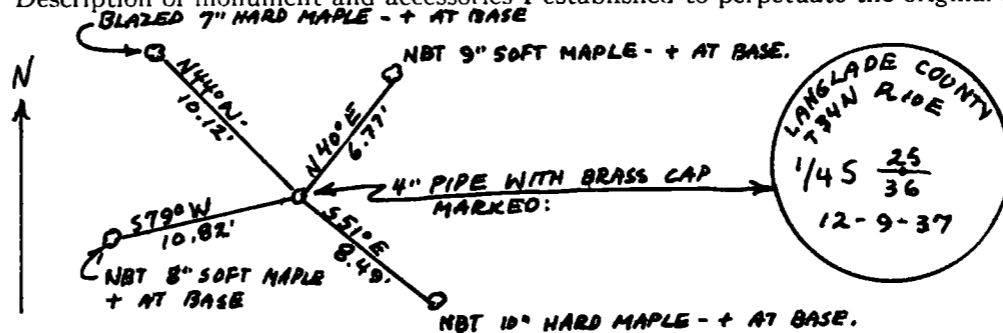
History of original corner establishment:



William F. Kelly

Description of corner evidence found:
LOCATED 1/4 SECT. COR. 25/36 T. 34N. - R. 10E. - 4" PIPE WITH BRASS CAP.

Description of monument and accessories I established to perpetuate the original location of this corner.



MARKED NEW BEARING TREES. AS REFERENCE TO CORNER. LINES BLAZED TO NORTH AND SOUTH OF CORNER. CORNER IS LOCATED IN A HARDWOOD FOREST.

Dated at ELCHO, Wis., this 8TH day of DECEMBER, 1975

Signature William F. Kelly Title REGISTERED LAND SURVEYOR Registration No. 51098
 (County Surveyor, Registered Land Surveyor, or other duly authorized official)

Office of Register of Deeds, County of....., I hereby certify that the within instrument was filed in this office for record on the..... day of....., 19..... at..... o'clock..... M.

.....
 (Register of Deeds)

By..... Deputy