

CERTIFIED LAND CORNER RESTORATION

Index No. V-21

State of Wisconsin }  
County of Langlade } ss.

I Daniel K. Pleoger, do hereby certify that on the 16th day of September, 1980, I found evidence of the Section Corner corner of Sections 25-26-35-36 Township 34, North, Range 10 East, Fourth Principal Meridian, as described hereon; and that from this evidence I established a new monument and accessories as described hereon to perpetuate the original location of this corner.

Resident witnesses:

\_\_\_\_\_  
\_\_\_\_\_  
\_\_\_\_\_



History of original corner establishment:

Original corner established by J.L. Nowlin, deputy surveyor, in 1865 from which Birch 15" bears N65°W 20 links and Hemlock 12" bears S80°E 20 links. In 1937 Langlade County surveyors found old scribed post in fence line identified by land owners.

Marked NBT - Birch 12" S 21-1/2° E 38.2 links.

Description of corner evidence found:

Recovered a 4" iron pipe filled with concrete and capped with a 4" brass cap, stamped: Projecting 8" above ground.  
OBT - gone, area open field.

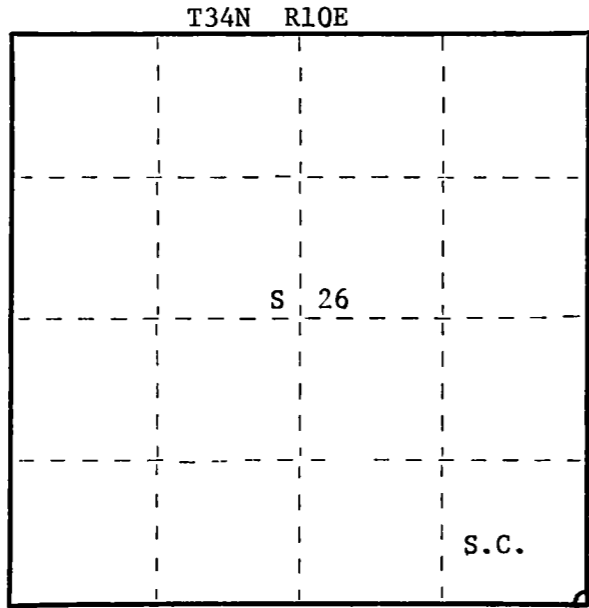
Langlade County  
T34N R10E  
26 | 25  
35 | 36  
12-7-37

Description of monument and accessories I established to perpetuate the original location of this corner.

Monument left as recovered.

N.B.Q.'s:  
Power Pole #3410-35E22 - N76W 79.18 feet  
S.W. corner of house - N14°W 65.23 feet.  
Telephone pole #S66 - N42°W 83.85 feet.

FORM 985 M. C. MILLER CO., MILWAUKEE



○ = Corner monument restored.

Dated at Rhineland, Wis., this 23rd day of February, 1981

Signature Daniel K. Pleoger Title Registered Land Surveyor Registration No. 1537  
(County Surveyor, Registered Land Surveyor, or other duly authorized official)

Office of Register of Deeds, County of \_\_\_\_\_, I hereby certify that the within instrument was filed in this office for record on the \_\_\_\_\_ day of \_\_\_\_\_, 19\_\_\_\_ at \_\_\_\_\_ o'clock \_\_\_\_\_ M.

\_\_\_\_\_  
(Register of Deeds)

By \_\_\_\_\_ Deputy

CERTIFIED LAND CORNER RESTORATION

Index No. V-21

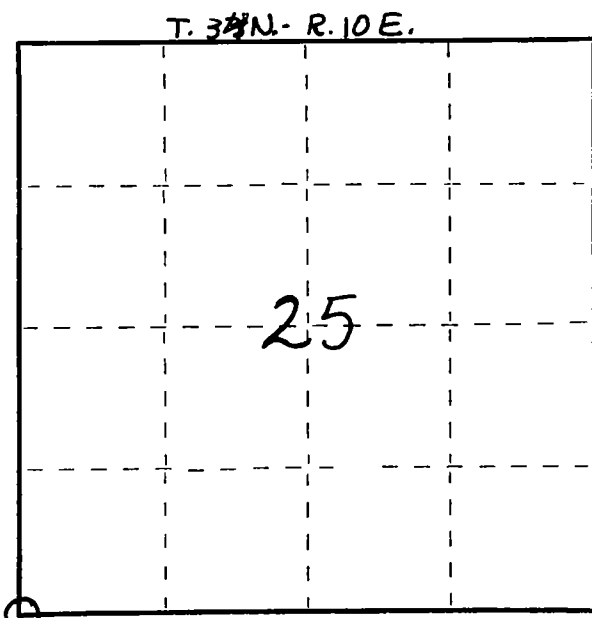
State of Wisconsin }  
 County of LANGLADE } ss.

I WILLIAM F. KELLY, do hereby certify that on the 4TH day of DECEMBER, 1975, I found evidence of the SECTION corner of SECTIONS 26, 25, 35 & 36 Township 34, North, Range 10E, Fourth Principal Meridian, as described hereon; and that from this evidence I established a new monument and accessories as described hereon to perpetuate the original location of this corner.

Resident witnesses:

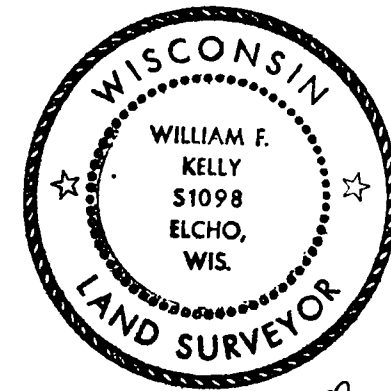
GLEN BERGEN

FORM 985 M. C. MILLER CO., MILWAUKEE

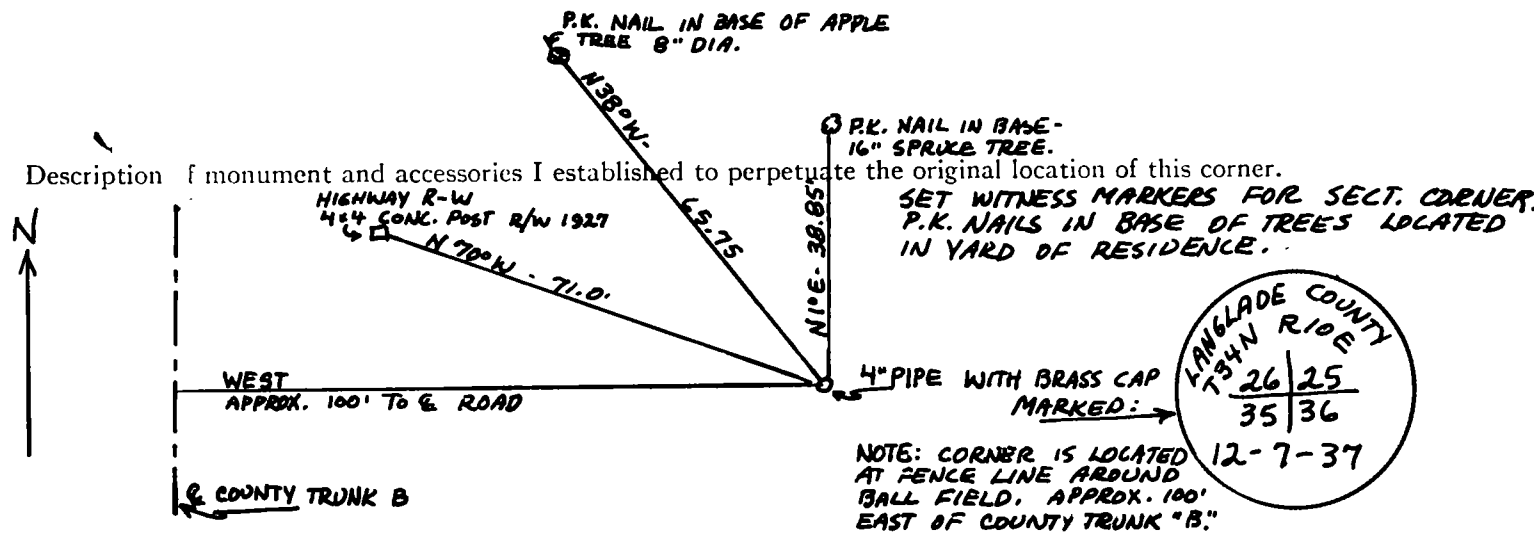


History of original corner establishment:

Description of corner evidence found:

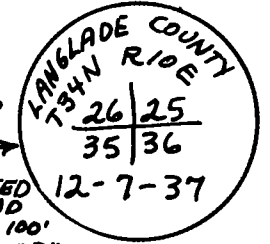


*William F. Kelly*



Description of monument and accessories I established to perpetuate the original location of this corner.

SET WITNESS MARKERS FOR SECT. CORNER. P.K. NAILS IN BASE OF TREES LOCATED IN YARD OF RESIDENCE.



NOTE: CORNER IS LOCATED AT FENCE LINE AROUND BALL FIELD, APPROX. 100' EAST OF COUNTY TRUNK "B."

Dated at ELCHO, Wis., this 4TH day of DECEMBER, 1975.

Signature William F. Kelly Title REGISTERED LAND SURVEYOR Registration No. 51098  
 (County Surveyor, Registered Land Surveyor, or other duly authorized official)

Office of Register of Deeds, County of \_\_\_\_\_, I hereby certify that the within instrument was filed in this office for record on the \_\_\_\_\_ day of \_\_\_\_\_, 19\_\_\_\_ at \_\_\_\_\_ o'clock \_\_\_\_\_ M.

(Register of Deeds)

By \_\_\_\_\_ Deputy