

CERTIFIED LAND CORNER RESTORATION

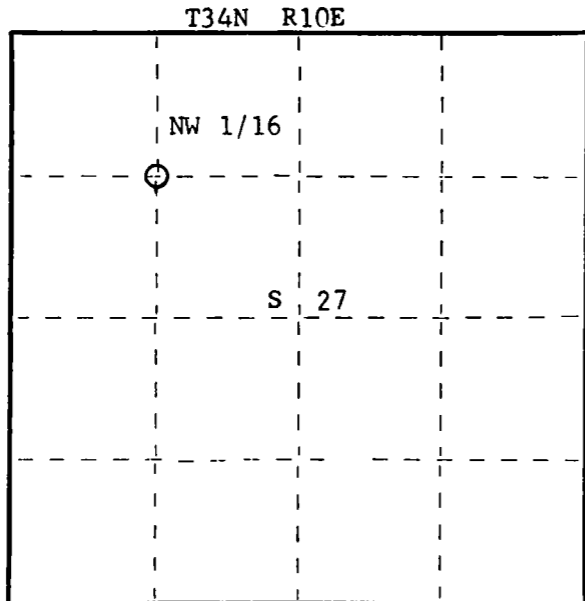
Index No. S-14

State of Wisconsin }  
County of Langlade } ss.

I, Daniel K. Pleoger, do hereby certify that on the 14th day of August, 1980, I found evidence of the NW 1/16 corner of Section 27 Township 34, North, Range 10 East, Fourth Principal Meridian, as described hereon; and that from this evidence I established a new monument and accessories as described hereon to perpetuate the original location of this corner.

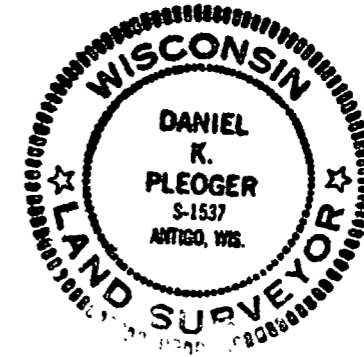
Resident witnesses:

.....  
.....  
.....



○ = Corner monument restored.

History of original corner establishment:  
No evidence of any previous corner.



Description of corner evidence found:

Corner established by subdivision of the NW 1/4 section 27.  
Computed location of NW 1/16 corner is S0-20-09E 1381.402 feet of W 1/16 between sections 22, 27 and N0-20-09W 1381.405 feet of WC 1/16 section 27.

Description of monument and accessories I established to perpetuate the original location of this corner.

Set a 1-1/2" I.D. iron pipe with screw-on brass cap - stamped:  
Monument projects 18" above ground.

Marked NBT's -  
Sugar 5" S5°E 23.68 feet  
Sugar 6" S68°W 3.32 feet  
Sugar 6" N37°W 20.94 feet  
scribed 1/16 BT

T34N R10E  
NW 1/16 S+<sup>27</sup>  
S1537-1980

Dated at Rhineland, Wis., this 16th day of October, 1980

Signature Daniel K. Pleoger Title Registered Land Surveyor Registration No. 1537  
(County Surveyor, Registered Land Surveyor, or other duly authorized official)

Office of Register of Deeds, County of....., I hereby certify that the within instrument was filed in this office for record on the.....day of....., 19..... at.....o'clock..... M.

.....  
(Register of Deeds)

By.....Deputy

FORM 985 K C MILLER CO. MILWAUKEE