

U.S. PUBLIC LAND SURVEY MONUMENT RECORD

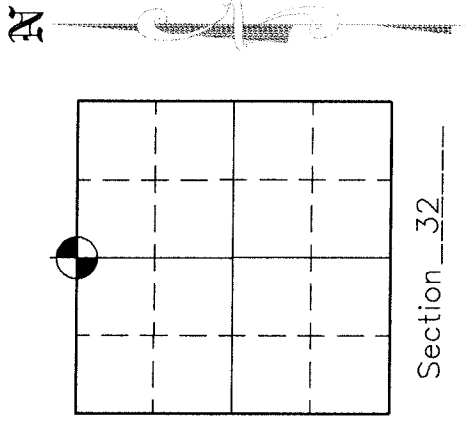
NOTE: This form is intended and designed to fulfill all requirements of Wisconsin Administrative Code, Chapter A-E 7 .08 U.S. Public Land Survey Monument Record (3)(a)(b)(c)(d)(e)(f)(g)(h)(i). An additional sheet may be added if necessary to conform with said requirements.

(a) Corner location: Township 34 North

Range 10 East/West

Town/City/Village ELCHO

County LANGLADE



(b)(f)(g)(h) Description of monument found at this corner and if it was accepted, state all evidence (material, testimonial, occupational, plats, records, other monuments) used as a basis for accepting. If not accepted or if nothing was found, state evidence used as basis for establishing location. If reestablished through lost corner proportionate methods, indicate all monuments, distances and directions used to establish. Indicate type of monument found or set and sign post.

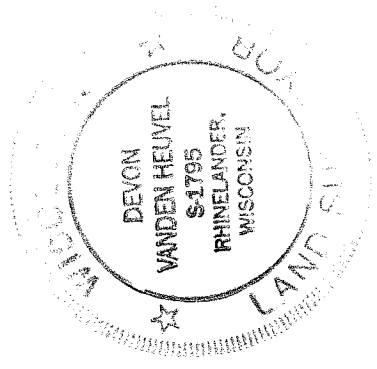
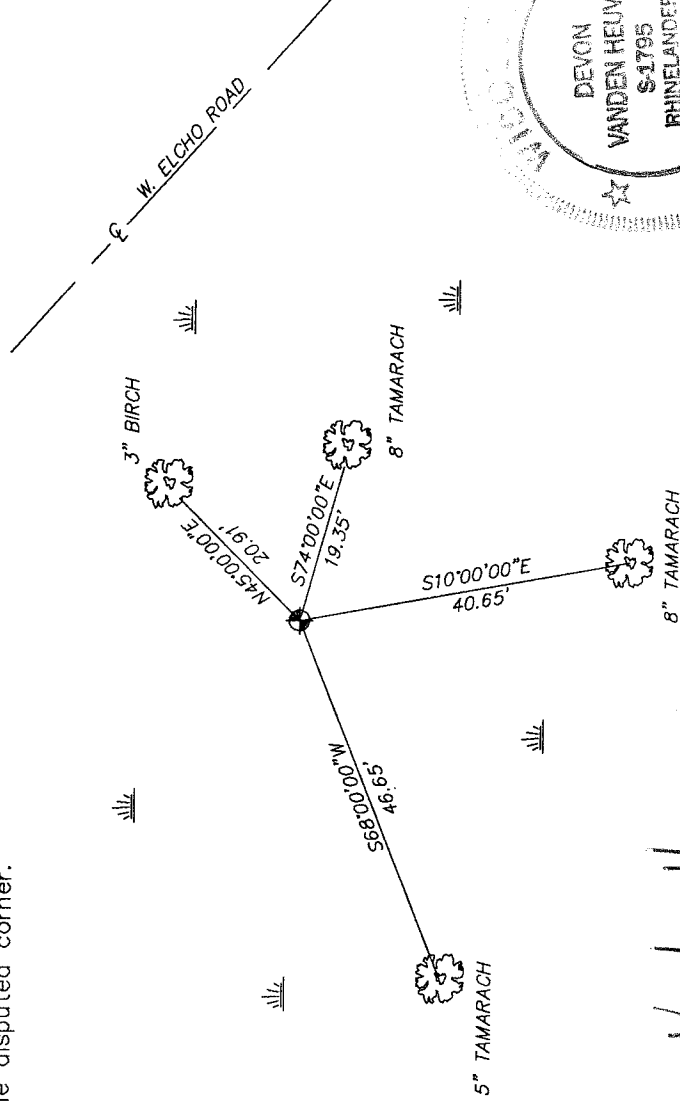
JULY, 1865 - JAS T. NOWLIN, DEPUTY SURVEYOR, SET 1/4 SECTION POST BETWEEN SEC. 29 AND 32 IN SWAMP.
9" CEDAR S75E, 17 LINKS, 10" TAMARAC S15W, 30 LINKS.

1936 - D. A. HINTZ, E. F. KOWALKE, C. W. BORTH - LOCATED 1/4 CORNER SET BY NOWLIN ON NORTH EDGE OF SWAMP. RE-ESTABLISHED CORNER BY HUTCHINSON.

7-26-99 - NICOLET SURVEYING - FOUND 4" CAPPED IRON PIPE SET BY HINTZ, MADE NEW TIES

← SEE UPDATE ON REVERSE SIDE

(c)(d)(e) Plan view of corner with ties to at least 4 witness monuments. If in disagreement with previously established corner, show the distances between the two corners and also indicate the ties to the disputed corner.



(i) Devon Vanden Heuvel
(type or print name) certify that the corner location on this record was determined by me or under my direction and control and that this U.S. Public Land Survey Monument Record is correct and complete to the best of my knowledge and belief.

Devon Vanden Heuvel 7/26/99
Signature Date

3410290020

V7

108

FB16-108

9/5/13 D. TUSTY. N 1/4 COR S32-34-10.

REVISITED MON. REDUC IT STRAIGHT. SET 6' STEEL
CORNER POST ON S. EDGE, FINISH WITH TOP OF
EXISTING 4" IP W/ BRASS CAP. TOP IS 6" ABOVE
SURF. END WHITE VINYL POST 1.5' ± S OF MON.

END BT'S W GOD NAIL N SIDE OF TREES NOTED

8" TAM, 116°, 19.38' N4 S. SIDE

" " 174° 41.48' N4 W. "

5" TAM, 255°, 47.37', N4 N. "

0 MARK

SET NEW BT MARKED SAME:

5" TAM, 224°, 46.28' N4 NW SIDE

E ROAD (BAS S35E-N35W) ABERTY SS

FROM CURVE START OF CURVE BAS

N35W 125' ±

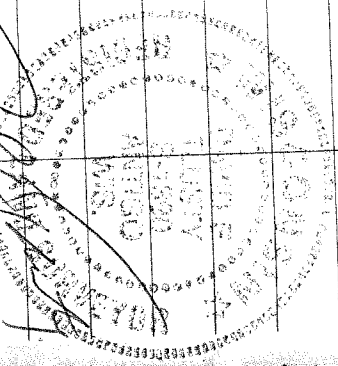
433294.65 ✓

SHOT EX RTK WISCONS WAD83(BU1): 590790.69 ✓

CORN MON IS NOW N29E, 0.7'

FROM WILSONS WADONHEINER USED & TIED IT.

ALL
MARKED
BLUE



[Signature]
9/16/2013