

4347034 2020

U.S. PUBLIC LAND SURVEY MONUMENT RECORD

(Prepared and as required by S. A-E 7.08 WI Administrative Code)

The CENTER 1/4 corner of Section 34, T. 34 N., R. 10 E., Langlade County, WI
Corner was (check all that apply)

- Restored through acceptance of an obliterated evidence location.
- Restored through acceptance of a found perpetuated location.
- Determined to be lost and re-established through proportionate methods. (show bearings and distances to PLSS corners used for proportioning.)
- Restored/recovered/re-established in a location that differs from a previously established position. (Show difference in plan view below.)
- Check here if additional information is shown on the reverse side of this form.

Describe record evidence, recovered physical evidence, occupational evidence, testimonial evidence, and all other evidence considered in the recovery/restoration of the corner.

1865 - Center 1/4 corner was not set in the original GLO survey.

1980- Daniel Ploeger established Center 1/4 Corner by Subdivision of Section 34. He set a railroad spike 4 feet South of the centerline of C. T. H. T, and two brass caps for witness corners (S40°W, 40 feet; N56°E, 100 feet), and prepared and filed a tie sheet.

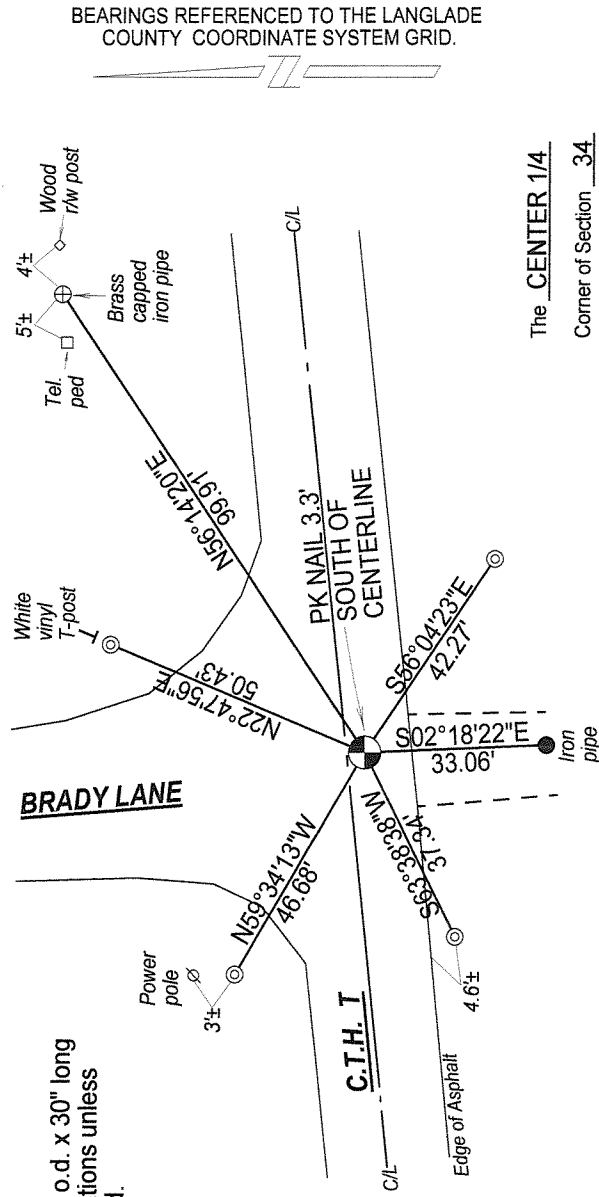
2011 - I found a PK nail at the corner location, and one of Ploeger's brass cap witness monument. The nail and brass cap locations match Ploeger's tie sheet.

Physical description of the monument set:

I accept the PK nail location; and tied it out as follows.

Describe the accessories used to perpetuate the location of the corner. Include a plan view drawing and indicate accessories found/set. Describe measuring point on bearing trees. Show any topographic features that would aid in future recovery of the corner.

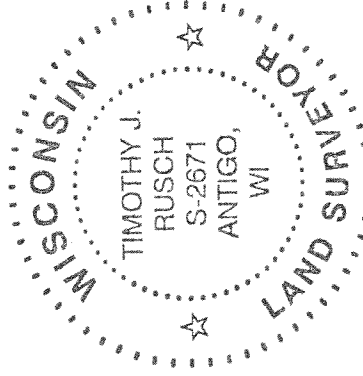
Note: Set 0.75" o.d. x 30" long rebar at tie locations unless otherwise noted.



The CENTER 1/4
Corner of Section 34
T. 34 N., R. 10 E.
Langlade County, WI

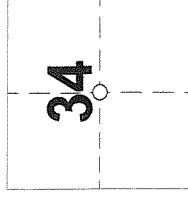
Not drawn to scale

SURVEYOR'S SEAL



I, Timothy J. Rusch certify that the corner location shown on this record was determined by me or under my direction and control and that this U.S. Public Land Survey Monument Record is correct and complete to the best of my knowledge and belief.

Timothy J. Rusch 12-14-2012
Signature Date



INDEX No. X-15 (34-10)

○ = Location of corner