

4341035 0020

# U.S. PUBLIC LAND SURVEY MONUMENT RECORD

(Prepared and as required by S. A-E 7.08 WI Administrative Code)

The North 1/4 corner of Section 2, T. 33 N., R. 10 E., Langlade County, WI  
Corner was (check all that apply)

- Restored through acceptance of an obliterated evidence location.
- Restored through acceptance of a found perpetuated location.
- Determined to be lost and re-established through proportionate methods.  
(show bearings and distances to PLSS corners used for proportioning.)
- Restored/recovered/re-established in a location that differs from a previously established position. (Show difference in plan view below.)
- Check here if additional information is shown on the reverse side of this form.

Describe record evidence, recovered physical evidence, occupational evidence, testimonial evidence, and all other evidence considered in the recovery/restoration of the corner.

1859- Govt Surveyor J.L. Nowlin set corner in original survey. BTs: 10" Fir N80°W, 10 links; 6" Hemlock, S75E, 12 links.

1906-B.F. Dorr (FB 96, PG. 72; FB 96, PG 129) set a 5" X 8"X 30" stone. BTs: 40" Pine stump , S34°E, 34.75 links; 12" Hemlock, N 1° E, 42.75 links

1939- GLO Resurvey- Found Dorr's stone and White Pine stump. Set 4" witness monument in concrete, and marked two new BTs: 7" Yellow Birch S48.5°E, 32.4 links and 7" Yellow Birch S25°E, 27.1 links.

The stone was referenced on other surveys by Kelly 1974, Abendroth 1991, and Amott 1998.

1981- Surveyor Ploeger found a 1" iron pipe flush with ground, the 4" brass cap filled with concrete, and the old Yellow Birch BTs. He used the 1" pipe "for true 1/4 corner", and set a 2.5" iron pipe with brass cap 28.92 feet "North of true corner" and tied to a power pole #3410-35L 25, N74°W, 67.51 feet. Apparently Ploeger was at the corner in the winter. He did not indicate looking for or finding Dorr's stone.

1997- Surveyor Will referenced a 1.5" Iron pipe on a CSM.

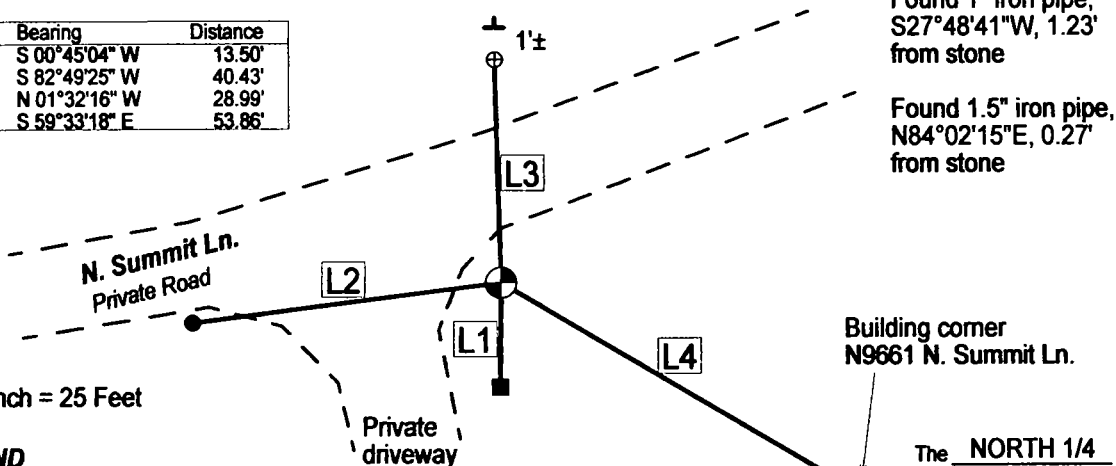
2009- I found the stone set in the 1906 survey, a 1" iron pipe SW of stone , a 1.5" iron pipe NE of stone, the 4" brass capped witness monument set 1939, the 2.5" brass capped witness monument set in 1981, and the power pole tie from 1981. I believe the stone found to be the best evidence of the original corner location.

Physical description of the monument set:

I left all the monuments in place and tied out the 1906 stone as follows.

Describe the accessories used to perpetuate the location of the corner. Include a plan view drawing and indicate accessories found/set. Describe measuring point on bearing trees. Show any topographic features that would aid in future recovery of the corner.

Id	Bearing	Distance
L1	S 00°45'04" W	13.50'
L2	S 82°49'25" W	40.43'
L3	N 01°32'16" W	28.99'
L4	S 59°33'18" E	53.86'



Scale 1 Inch = 25 Feet

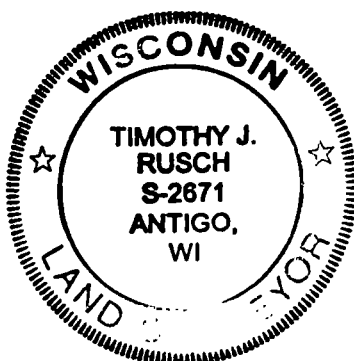
### LEGEND

- Found iron pipe
- Found 4" brass capped monument
- ⊕ Found 2.5" brass capped monument
- ⊙ Found stone with + on top
- ⊥ Set white vinyl post

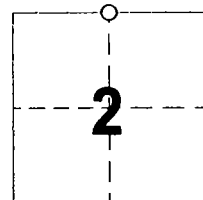
I, Timothy J. Rusch certify that the corner location shown on this record was determined by me or under my direction and control and that this U.S. Public Land Survey Monument Record is correct and complete to the best of my knowledge and belief.

Timothy J. Rusch Signature      09/25/2009 Date

SURVEYOR'S SEAL



The NORTH 1/4  
Corner of Section 2  
T. 33 N., R. 10 E.  
Langlade County, WI



○ = Location of corner

BEARINGS REFERENCED TO THE LANGLADE COUNTY COORDINATE SYSTEM GRID.

INDEX No. A-19 (33-10)

2-19 34-10

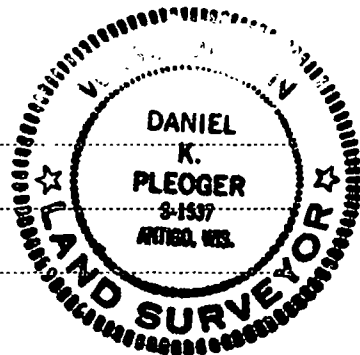
CERTIFIED LAND CORNER RESTORATION

Index No. Z-19

State of Wisconsin }  
County of Langlade } ss.

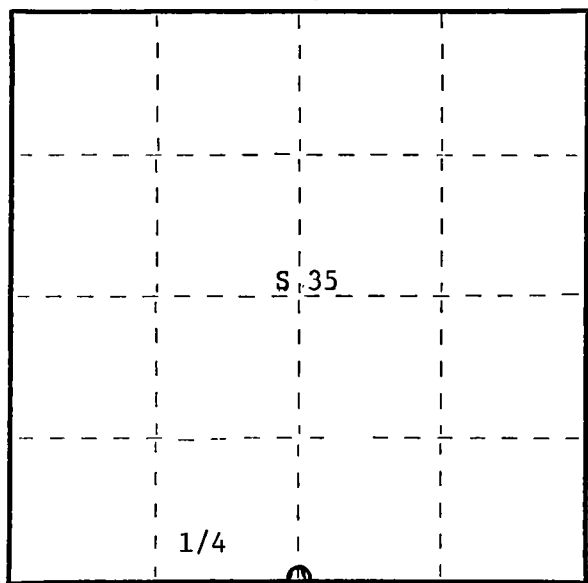
I Daniel K. Pleoger, do hereby certify that on the 20th day of October, 1980, I found evidence of the Quarter corner of sections 35 and 2 Township 33 and 34, North, Range 10 East, Fourth Principal Meridian, as described hereon; and that from this evidence I established a new monument and accessories as described hereon to perpetuate the original location of this corner.

Resident witnesses:



FORM 985 H. C. MILLER CO., MILWAUKEE

T34N R10E



○ = Corner monument restored.

History of original corner establishment:

Original corner established by J.L. Nowlin, deputy surveyor, in 1865 from which Fir 10" bears N80°W 10 links and Hemlock 6" bears S75°E 12 links. In 1937 Langlade County surveyors recovered stone and B.F. Dorr's white pine stump 40" S38°E 34.5 links.  
Marked NBT's - Y. Birch 7" S48°E 32.4 links  
Y. Birch 7" S25°E 27.1 links

Description of corner evidence found:

Recovered a 1" iron pipe drove flush with the ground for true 1/4 corner. 20 links south of pipe recovered a 4" iron pipe filled with concrete and capped with a 4" brass cap - stamped:  
Projecting 18" above ground.  
OBT's - Y. Birch 7" S48°E 32.4 links - gone.  
Y. Birch 9" S25°E 27.1 links - stump remains.

Langlade County  
T34N R10E  
1/4S  $\frac{35}{2}$   
W.C.  
T33N  
11-11-37  
Cor. 20 lks. N

Description of monument and accessories I established to perpetuate the original location of this corner.

Pipe and monument left as recovered.

Set a 2-1/2" iron pipe with brass cap 28.92 feet north of true corner, stamped:  
N.B.O. - power pole #3410-35L 25  
N74°W 67.51 feet

S1537 - 1980  
T34N R10E  
1/4  $\frac{S 35}{S 2}$  W.C.  
T33N - R10E  
S. 28.92 ft. to cor.

Dated at Rhinelander, Wis., this 23rd day of February, 1981

Signature Daniel K. Pleoger Title Registered Land Surveyor Registration No. 1537  
(County Surveyor, Registered Land Surveyor, or other duly authorized official)

Office of Register of Deeds, County of \_\_\_\_\_, I hereby certify that the within instrument was filed in this office for record on the \_\_\_\_\_ day of \_\_\_\_\_, 19\_\_\_\_ at \_\_\_\_\_ o'clock \_\_\_\_\_ M.

(Register of Deeds)

By \_\_\_\_\_ Deputy