

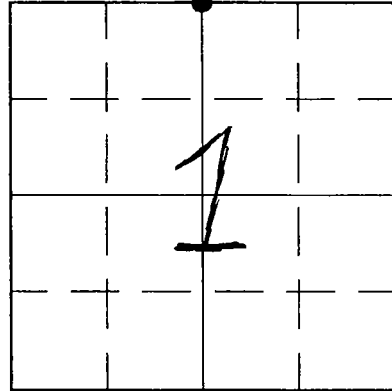
U.S. PUBLIC LAND SURVEY MONUMENT RECORD

43410360020

HISTORY OF ORIGINAL CORNER ESTABLISHMENT AND SUBSEQUENT RESTORATION AND DESCRIPTION OF ANY RECORD, MONUMENT OCCUPATIONAL, TESTIMONIAL OR OTHER EVIDENCE CONSIDERED:

THE ORIGINAL QUARTER CORNER WAS ESTABLISHED IN 1859 BY HIRAM C. FELLOWS. ORIGINAL BT'S: TAMARAC 10" N29W 13LKS., FIR 14" S70W 35LKS. SUBSEQUENT RESURVEY NOTES INDICATED A STONE TO BE IN PLACE AT THIS CORNER. CHARLEY BRINKMEIER AND GERRY BAHAR SEARCHED FOR THIS CORNER AND FOUND ONLY THE WITNESS MONUMENT. IN 1996, DAVE TLUSTY, LANGLADE CO SURVEYOR, DUG FOR THIS CORNER AND FOUND WHERE THE STONE HAD BEEN. A 1 1/4"X30" IRON ROD WAS SET AT THIS LOCATION AND WAS TIED OUT.

● = LOCATION OF CORNER

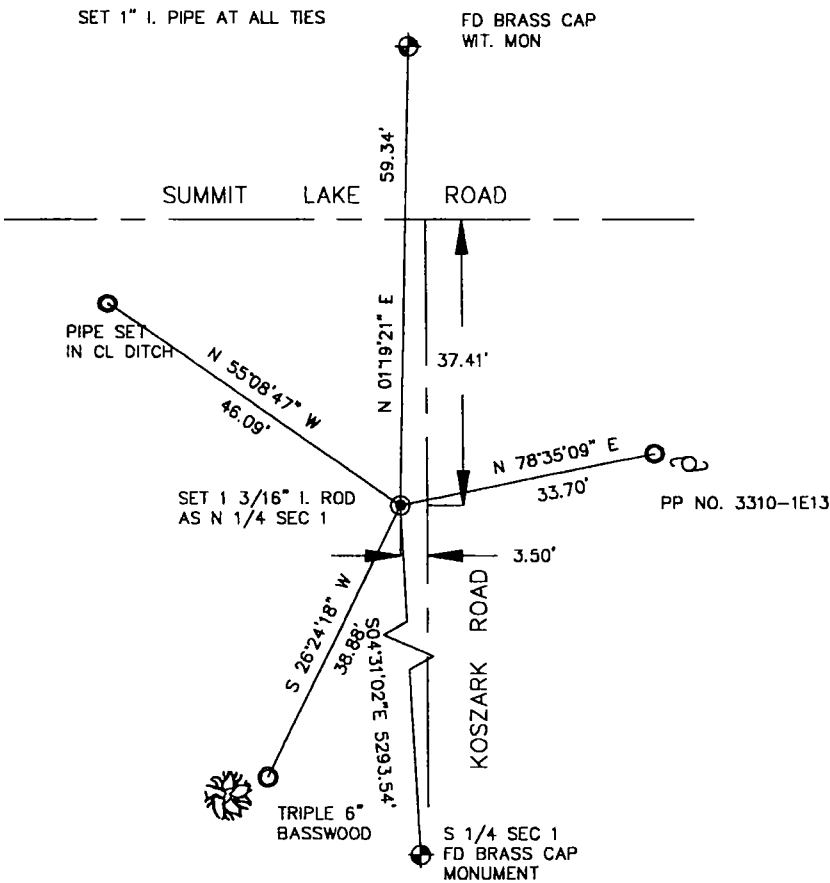


SECTION 1
 TOWNSHIP 33 NORTH, RANGE 10 EAST
 TOWN OF UPHAM
 LANGLADE COUNTY, WISCONSIN

CORNER WAS: (CHECK ALL THAT APPLY)

- RESTORED THROUGH ACCEPTANCE OF AN OBLITERATED EVIDENCE LOCATION
- RESTORED THROUGH ACCEPTANCE OF A FOUND PERPETUATED LOCATION
- CONSIDERED A LOST CORNER AND REESTABLISHED THROUGH LOST CORNER PROPORTIONATE METHODS (INCLUDE A PLAN VIEW DRAWING SHOWING DISTANCES AND DIRECTIONS TO OTHER PUBLIC LAND SURVEY CORNERS USED FOR PROPORTIONING AND DETERMINING THE CORNER LOCATION)
- RESTORED OR REESTABLISHED IN A LOCATION THAT DIFFERS FROM A PREVIOUS RESTORATION OR REESTABLISHMENT (INCLUDE A PLAN VIEW DRAWING AND INDICATE WHAT WAS SET AND/OR FOUND)
- CHECK IF THERE IS ADDITIONAL INFORMATION ON BACK

DESCRIBE THE MONUMENT AND ACCESSORIES USED TO PERPETUATE THE LOCATION OF THE CORNER. (INCLUDE A PLAN VIEW DRAWING AND INDICATE WHAT WAS SET AND/OR FOUND) ALSO INCLUDE FOUR TIES TO THE SECTION CORNER AND DESCRIPTION OF THE TIES.

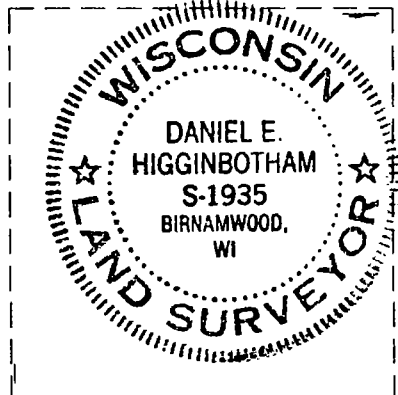


DANIEL E. HIGGINBOTHAM

(Type or print name) CERTIFY THAT THE CORNER LOCATION SHOWN ON THIS RECORD WAS DETERMINED BY ME OR UNDER MY DIRECTION AND CONTROL AND THAT THIS U.S. PUBLIC LAND SURVEY MONUMENT RECORD IS CORRECT AND COMPLETE TO THE BEST OF MY KNOWLEDGE AND BELIEF.

Daniel E. Higginbotham
 SIGNATURE

2/27/03
 DATE



A 23 33-10
 223 34-10
 INDEX NO.