

4341431 0000 2017

**U.S. PUBLIC LAND SURVEY MONUMENT RECORD**

Note: This form is intended and designed to fulfill all requirements of Wisconsin Administrative Code, Chapter A-E 7.08 U.S. Public Land Survey Monument Record (3)(a-l).

WISCONSIN - Langlade County

N: 427,220.16 USft

E: 715,847.42 USft

WISCONSIN - Forest County

N: 500,560.62 USft

E: 867,050.30 USft

Datum: NAD 83(2011)

GNSS Method: WISCONSIN RTN

		SEC. 6	
		T33N R14E	

**(b) HISTORY OF ORIGINAL CORNER ESTABLISHMENT**

Original Surveyor: Alfred Millard

Original Accessories:

Date of Survey      Commenced: August, 1857  
 Completed: August, 1857

Hemlock 28" S55°E, 40 lks.  
 Y. Birch 14" S45°W, 48 lks.  
 Hemlock 16" N43°W, 38 lks.  
 Hemlock 14" N60°E, 58 lks.

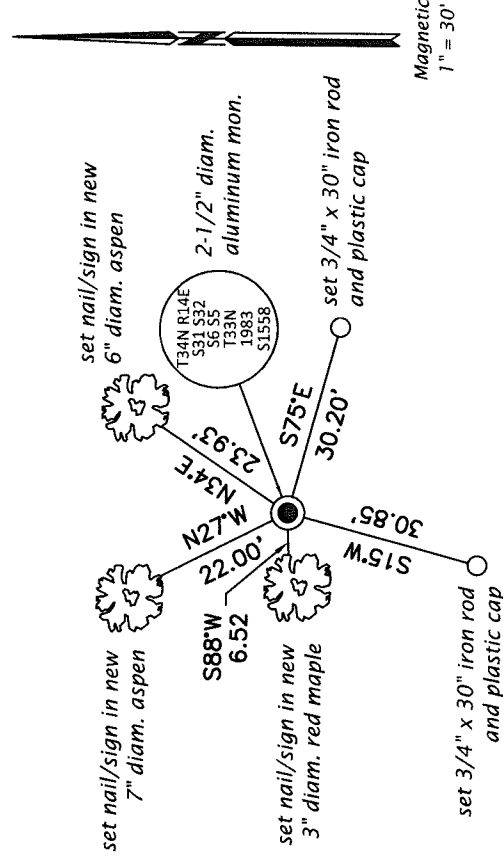
(b)(f)(g)(h) Description of monument found at this corner and if it was accepted, state all evidence (material, testimonial, occupational, plats, records, other monuments) used as a basis for accepting. If not accepted or if nothing was found, state evidence used as basis for establishing location. If re-established through lost corner proportionate methods, indicate all monuments, distances and directions used to establish. Indicate type of monument and sign post found or set.

*This is a perpetuation of a previous USPLS Monument Record by Milo E. Stefan, RLS dated February 19, 1985 and filed in the office of the Langlade County Surveyor. A complete history of the corner can be found on the previous monument record. I accept the previous location as a true and faithful perpetuation or reestablishment of the original corner location and further perpetuate it as follows.*

*This is a perpetuation of a previous USPLS Monument Record by Alan D. Harrison, RLS dated October 26, 1994 and filed in the office of the Langlade County Surveyor. A complete history of the corner can be found on the previous monument record. I accept the previous location as a true and faithful perpetuation or reestablishment of the original corner location and further perpetuate it as follows.*

*November 6, 2016: I found and accepted the record monument, a 2-1/2" diam. aluminum pipe with a 3-1/4" diam. aluminum cap projecting 14" above the ground surface. I set a DEEP-1 magnet adjacent to the monument. All record bearing trees are gone or standing dead. I established accessories as shown below. A USFS steel sign post bears West, 1.8 ft. I set a white vinyl*

(c)(d)(e) Plan view of corner with ties to at least 4 witness monuments. If in disagreement with previously established corner, show the distances between the two corners and also indicate the ties to the disputed.

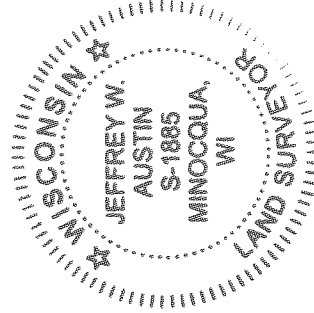


Clearcut South of Corner

(i) I, Jeffrey W. Austin, Professional Land Surveyor No. S-1885, hereby certify that the corner location on this record was determined by me or under my direction and control and that this U.S. Public Land Survey Monument Record is correct and complete to the best of my knowledge and belief.

*[Signature]*  
 Signature

July 4, 2017  
 Date



A-5 33-14