

# U. S. PUBLIC LAND SURVEY MONUMENT RECORD

**INSTRUCTIONS:**

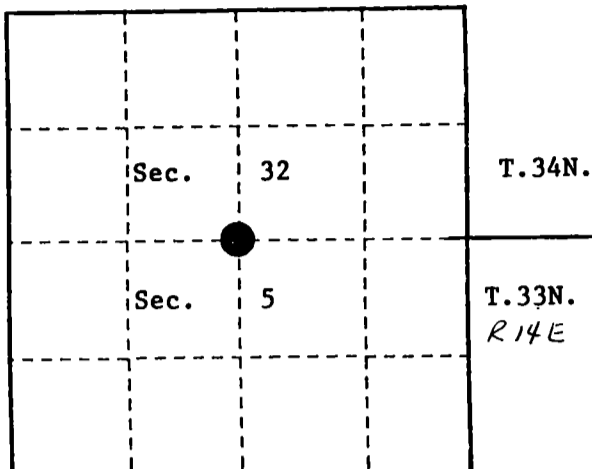
This record shall show the location of the corner and shall include all of the following nine elements (a through i).

- (a) Identify the corner by reference to the U.S. public land survey system.
- = Corner monument restored.

**Quarter Corner to Sections 5 and 32,  
T.33-34N., R14E., Forest and Langlade  
Counties, WI.**

**State Plane Coordinates**  
Wisconsin North Zone  
79618.95709-N  
2284416.00924-E

**Geographic Coordinates**  
45-22-41.90593-N  
088-46-14.29169-W



- (b) Describe any record evidence, monument evidence, occupational evidence, testimonial evidence or any other material evidence you considered, and whether the monument was found or placed.

Original survey in 1857 by Alfred Millard. Set wood post and the following bearing trees; Sugar, 16", S.50°W., 9 links, Hemlock, 10", N.58°E., 34 links.

On October 3 1983, Alan Harrison, R.L.S., found a post point in a mound of stone, from which an original Hemlock stump bears N. 58°E., 34 links (22.44 feet).

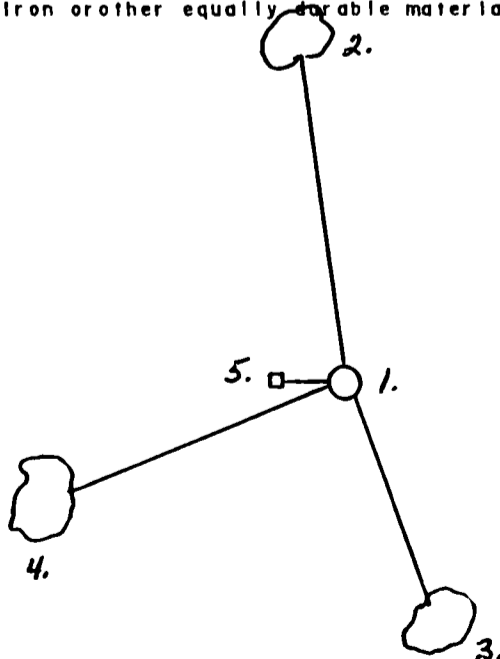
In place of post point, set a 2" x 36" aluminum monument with a tablet stamped to identify corner. Blazed and scribed new bearing trees; White Pine, 8", N.10°W., 80.08 feet, White Pine, 6", N.65°E., 45.98 feet, White Birch, 7", S.20°E., 37.51 feet, Steel sign post, West 1.8 feet.

On March 26 1991, Alan Harrison, R.L.S., found the monument and bearing trees as set in 1983. Northeast bearing tree is gone. Blazed and scribed 1 new bearing tree; Sugar, 5", S.50°W., 35.94 feet.

- (c) In the plan view drawing below, provide reference ties to at least 4 witness monuments, or, if the location is within a municipality, to at least 2 witness monuments. (witness monuments shall be made of concrete, natural stone, iron or other equally durable material.)

- (d) Show a plan view drawing depicting the relevant monuments and reference ties which is sufficient in detail to enable accurate relocation of the corner monument if the corner monument is disturbed. Indicate north.

1. 2" x 36" aluminum monument with tablet stamped to identify corner.
2. White Pine, 8", N.10°W., 80.08 feet.
3. White Birch, 7", S.20°E., 37.51 feet.
4. Sugar, 5", S.50°W., 35.94 feet.
5. Steel sign post, West, 1.8 feet.



33-14  
A7

(e) Describe any material discrepancy between the location of the corner as restored or reestablished and the location of that corner as previously restored or reestablished by distance and direction. Show the discrepancy on the plan view drawing under (d), above. Show the distances between the corner as previously restored or reestablished and (1) the corner as restored or reestablished, and (2) to at least 2 of the witness monuments shown on the drawing in (d), above.

None

(f) Was the corner restored through acceptance of (1) an obliterated evidence location, or, (2) a found perpetuated location?

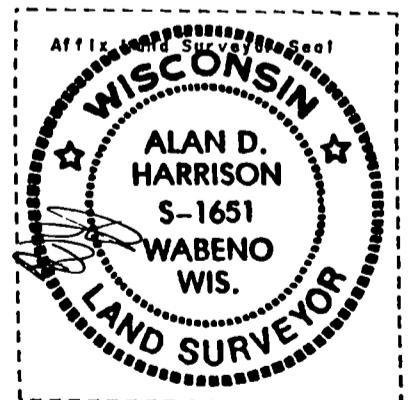
(2)

(g & h) Was the corner reestablished through lost corner proportionate methods? If so, show the method, including the directions and distances to other public land survey corners used as evidence or used for proportioning in determining the corner location?

No

(1) I, Alan D. Harrison

(type or print name) certify that the corner location shown on this record was determined by me or under my direction and control and that this U.S. Public Land Survey Monument Record is correct and complete to the best of my knowledge and belief.



Alan D. Harrison 10/26/94  
Signature Date

CERTIFICATE READY FOR FILING:

Jul Vap  
District Ranger

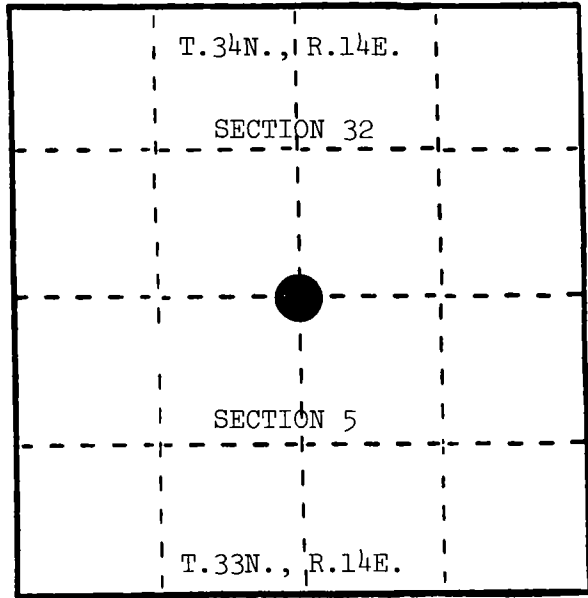
# U. S. PUBLIC LAND SURVEY MONUMENT RECORD

**INSTRUCTIONS :** This record shall show the location of the corner and shall include all of the following nine elements (a through i).

(a) Identify the corner by reference to the U.S. public land survey system.

○ = Corner monument restored.

Quarter corner to Sections 32 and 5, T.33-34N., R.14E.



T.33N. - R.14E.

(b) Describe any record evidence, monument evidence, occupational evidence, testimonial evidence or any other material evidence you considered, and whether the monument was found or placed.

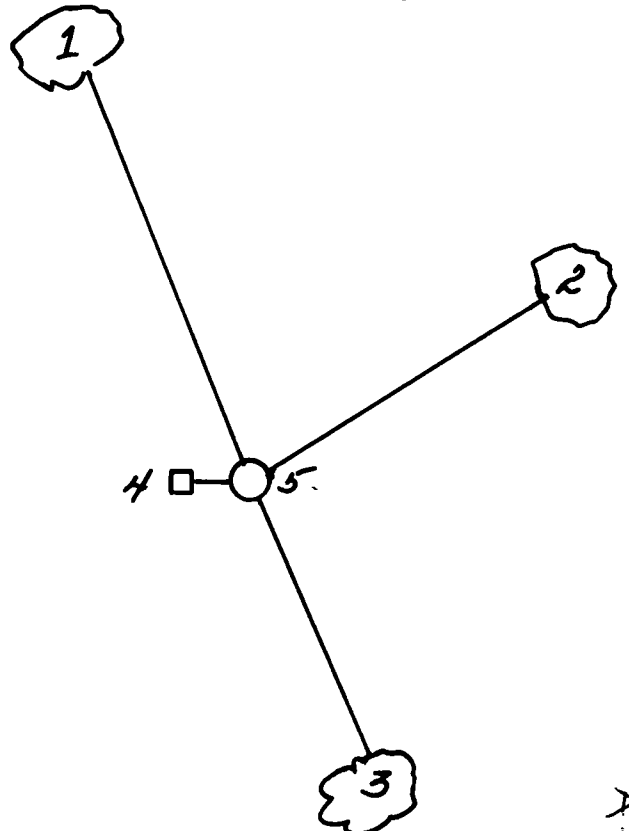
June, 1857, Alfred Millard set wood post and the following BTs: Sugar, 16", S.50°W., 9 links; Hemlock, 10", N.58°E., 34 links.

October, 1983, Alan Harrison found corner position marked by a mound of stone with a post point in center and remains of original Hemlock stump at proper bearing and distance.

(c) In the plan view drawing below, provide reference ties to at least 4 witness monuments, or, if the location is within a municipality, to at least 2 witness monuments. (Witness monuments shall be made of concrete, natural stone, iron or other equally durable material.) Describe witness monuments.

(d) Show a plan view drawing depicting the relevant monuments and reference ties which is sufficient in detail to enable accurate relocation of the corner monument if the corner monument is disturbed. Indicate north.

1. White Pine, 8", N.10°W., 80.08 feet
2. White Pine, 6", N.65°E., 45.98 feet
3. White Birch, 7", S.20°E., 37.51 feet
4. Steel Sign Post, West, 1.80 feet



(e) Describe any material discrepancy between the location of the corner as restored or reestablished and the location of that corner as previously restored or reestablished by distance and direction. Show the discrepancy on the plan view drawing under (d), above. Show the distances between the corner as previously restored or reestablished and (1) the corner as restored or reestablished, and (2) to at least 2 of the witness monuments shown on the drawing in (d), above.

(f) Was the corner restored through acceptance of (1) an obliterated evidence location, or, (2) a found perpetuated location?

(2) a found perpetuated location.

(g&h) Was the corner reestablished through lost corner proportionate methods? If so, show the method, including the directions and distances to other public land survey corners used as evidence or used for proportioning in determining the corner location?

No.

CHECKED 6/7/85 W.F. Kelley S-1098

(1) I, Milo E. Stefan  
(type or print name) certify that the corner location shown on this record was determined by me or under my direction and control and that this U.S. Public Land Survey Monument Record is correct and complete to the best of my knowledge and belief.

Milo E. Stefan  
Signature

2/19/85  
Date

