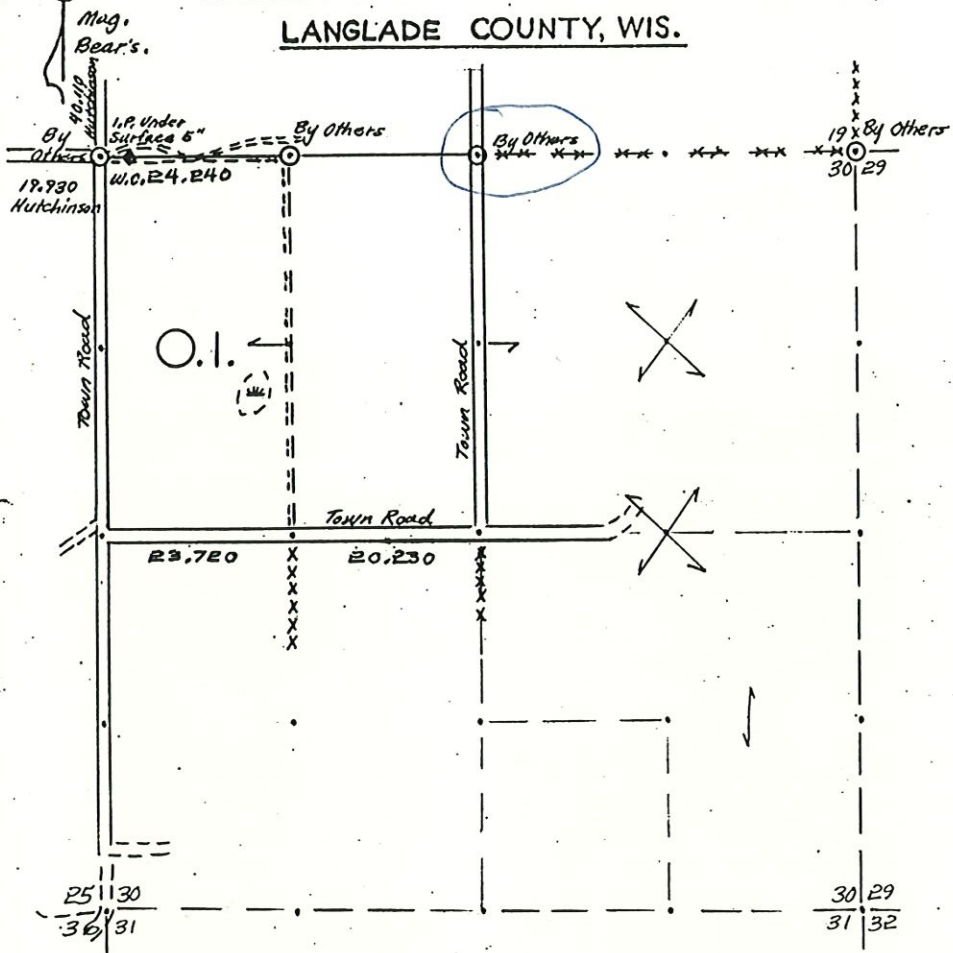


OWENS-ILLINOIS

DATE 12/9/75

T. 32 N. R. 13 E. SEC. 30

LANGLADE COUNTY, WIS.



LEGEND CORNERS & LINES

- ⊙ Iron Pipe or Cap
- ⊕ Concrete
- ⊕ Wood Post
- △ Stake
- X Hub
- + Spike
- True-Blazed-Painted
- True Cut-Blazed
- Approximate-Painted
- Random
- xxxxx Fence
- R.O.W.

MAP BY

W. H. Stuth
 Survey By O.I.
 Stuth & Ebert
 Compass & Chain

Scale 1 1/2" = 1320.0'

Prepared By W. H. Stuth 3/5/87

B FILE

COMP

RECORD # 10975

STATEMENT Compass & Chain Survey of existing OFFICE

corners & road & fence intersections BY: D. FLUSTY

5/22/19

"COMPASS & CHAIN SURV. USING EXISTING
CORNERS & ROAD & FENCE INTERSECTIONS"

RECORDS EXAMINED _____ DWG. NO. _____

None

LOCAL CONTACTS _____

REMARKS _____