

INDEX OF SHEETS

- SHEET NO. 1 TITLE
- SHEET NO. 2 TYPICAL CROSS SECTIONS
- SHEET NO. 2 ESTIMATE OF QUANTITIES
- SHEET NO. 2A MISCELLANEOUS QUANTITIES
- SHEET NO. — RIGHT OF WAY PLAT
- SHEET NO. 3-6 PLAN AND PROFILE STA. 328+00 TO STA. 427+00
- SHEET NO. 7-12 STANDARD DETAILS
- SHEET NO. — DRAINAGE STRUCTURES
- SHEET NO. 13-27 CROSS SECTIONS

COUNTY AND HIGHWAY	ROUTE AND SECTION	CLASS AND AGREEMENT		FEDERAL DIVISION OFFICE	SHEET NUMBER
34.6	938.0	STATE	FEDERAL	WIS. 4	
			11.3		

STATE OF WISCONSIN
STATE HIGHWAY COMMISSION OF WISCONSIN

PLAN AND PROFILE OF PROPOSED
C.T.H. "Z" - S.T.H. 55 ROAD
C.T.H. "K"

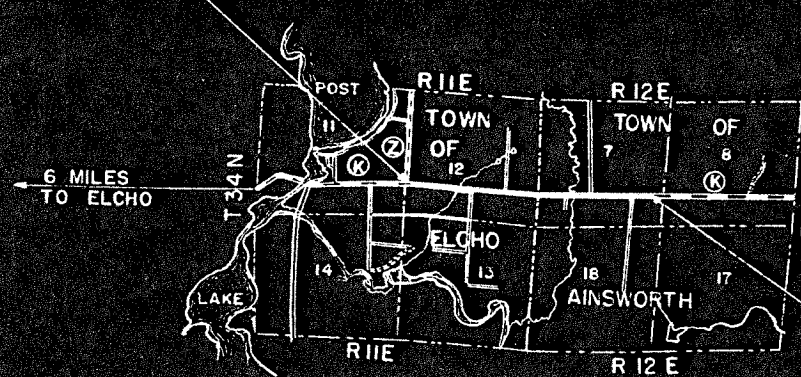
LANGLADE COUNTY
PROJECT S0938(3)

BEGINNING AT A POINT APPROXIMATELY 1400 FEET SOUTHERLY AND 120 FEET
EASTERLY FROM THE WEST QUARTER CORNER OF SECTION 12, T34N, R11E;
THENCE EASTERLY TO A POINT APPROXIMATELY 1280 FEET SOUTHERLY AND
750 FEET WESTERLY FROM THE EAST QUARTER CORNER OF SEC. 7, T34N, R12E.

SCALES { PLAN 1 IN. = 100 FT.
PROFILE HOR. 1 IN. = 100 FT. VERT. 1 IN. = 10 FT.
CROSS SECTIONS HOR. 1 IN. = 5 FT. VERT. 1 IN. = 5 FT.



STA. 328+00 BEGIN
PROJ. S0938(3) =
END PROJ. S 0938(2)



20010

20010

RECORD # 20010
APPROVED FOR ONEIDA COUNTY
LANGLADE COUNTY SURVEYORS OFFICE
DATE FILED: 7/14/16 BY: B. D. O. E.
CO. HIGHWAY COMMISSIONER.
Date July 30 59 Title 20010

STA. 427+00 END
PROJ. S0938(3)

CONVENTIONAL SIGNS

STATE LINE	— — — — —	CULVERTS IN PLACE	— — — — —
COUNTY LINE	— — — — —	CULVERTS REQUIRED	— — — — —
TOWNSHIP OR RANGE LINE	— — — — —	DROP INLET	□
SECTION LINE	— — — — —	POWER POLE	— — — — —
NEW RIGHT OF WAY LINE	— — — — —	TELEPHONE OR TELEGRAPH POLE	— — — — —
PRESENT RIGHT OF WAY LINE	— — — — —	RIGHT OF WAY MARKERS	— — — — —
WIRE FENCE	— — — — —	REFERENCE STAKE FOR HUBS ONLY	— — — — —
WOVEN	— — — — —	MARSH	— — — — —
BARBED	— — — — —	HEDGE	— — — — —
LOT LINE	— — — — —	TREES	— — — — —
CORPORATE OR CITY LIMITS	— — — — —	GROUND ELEVATION	DATUM LINE 75.16 73.9
PROPERTY LINE	— — — — —	GRADE ELEVATION	DATUM LINE 75.16 73.9
TRAVELED WAY OR P.E.	— — — — —		
RAILROADS	— — — — —		
BASE OR SURVEY LINE	— — — — —		

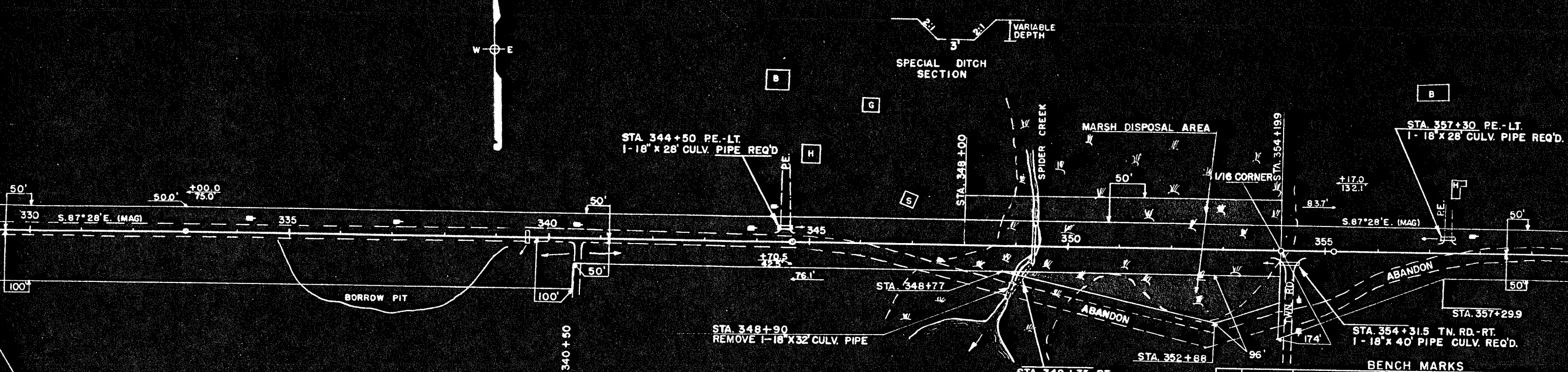
LAYOUT

SCALE 0 1/2 1
TOTAL NET LENGTH OF CENTERLINE = 1.875 MI.

STATE HIGHWAY COMMISSION OF WISCONSIN
MADISON, WIS.

ENGINEER H. Dancy NOTE: FRN
DISTRICT ENGINEER H. Dancy M. D. CHASE
DISTRICT CHECKER FRN CONNECT

CORRECT
DATE 7-25-57 Raymond P.
RECOMMENDED FOR APPROVAL
DATE 7/21/57 J. J. P.
APPROVED: J. J. P.
DATE 8/1/57 E. C. R.
DEPARTMENT OF COMMERCE
BUREAU OF PUBLIC WORKS
APPROVED: _____



STA. 328+00 BEGIN PROJ. S0938(3)
 END PROJ. S0938(2)

NET CENTERLINE LENGTH STA. 328+00 - 360+00 = 3200 LIN. FT.

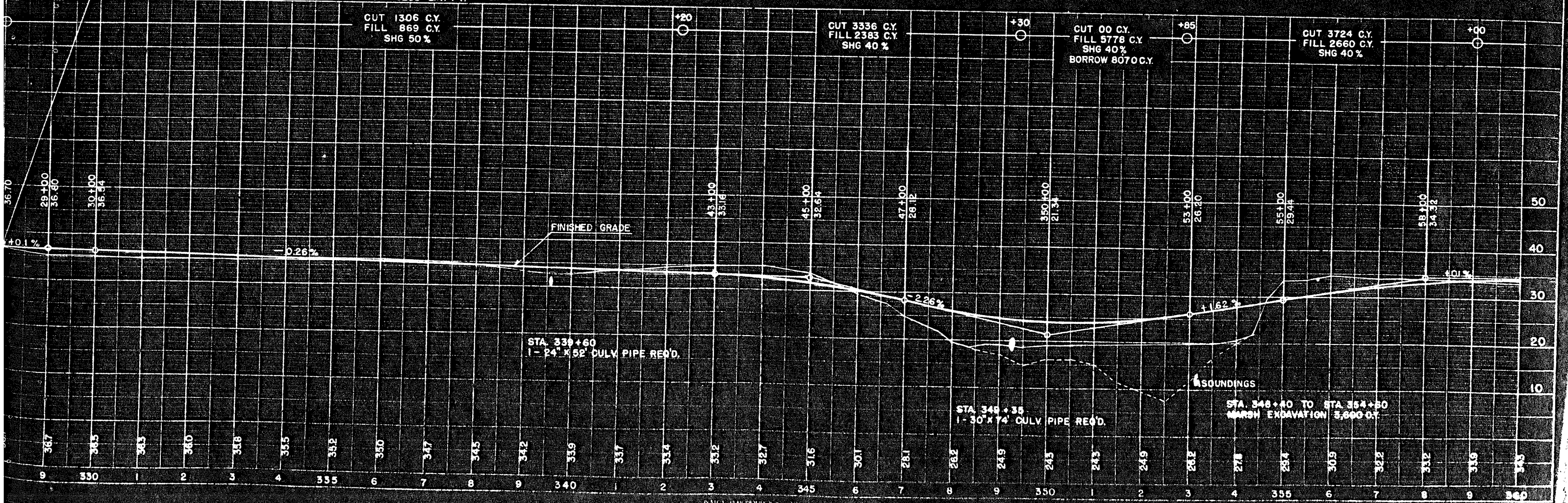
BENCH MARKS				
NO	STATION	DESCRIPTIONS		ELEV.
37	332+00	SPIKE IN 12" JACK PINE	80 LT.	36.60
38	338+85	SPIKE IN 12" JACK PINE	110 RT.	31.18
39	346+20	SPIKE IN 18" JACK PINE	125 RT.	21.70
40	355+85	SPIKE IN 14" JACK PINE	150 LT.	35.79

CUT 1306 C.Y.
 FILL 869 C.Y.
 SHG 50%

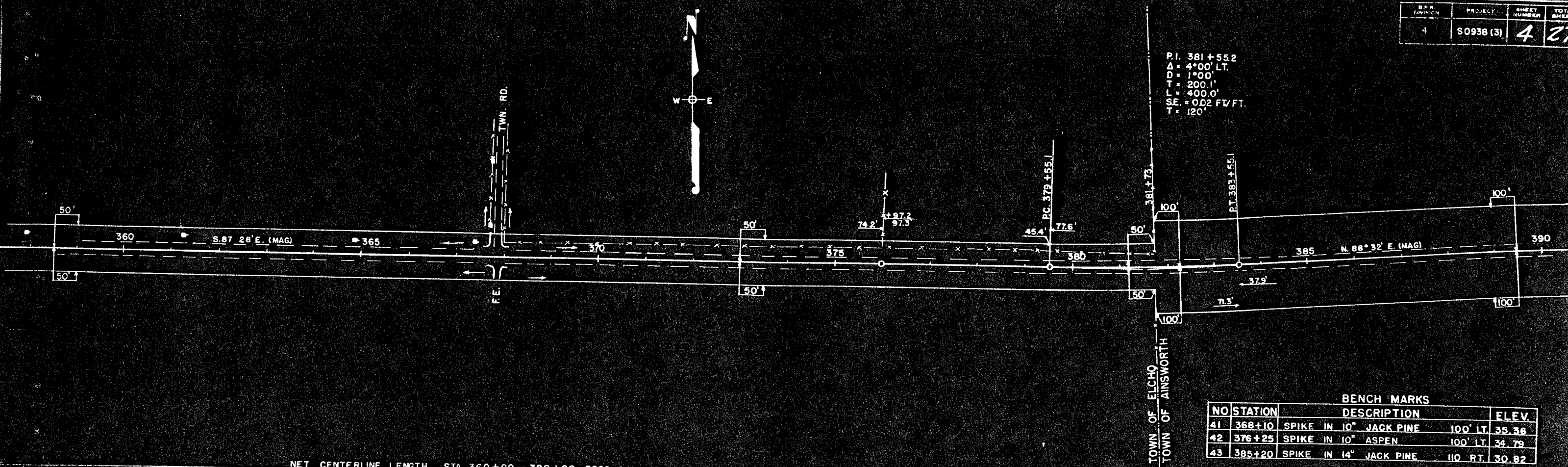
CUT 3336 C.Y.
 FILL 2383 C.Y.
 SHG 40%

CUT 00 C.Y.
 FILL 5778 C.Y.
 SHG 40%
 BORROW 8070 C.Y.

CUT 3724 C.Y.
 FILL 2660 C.Y.
 SHG 40%



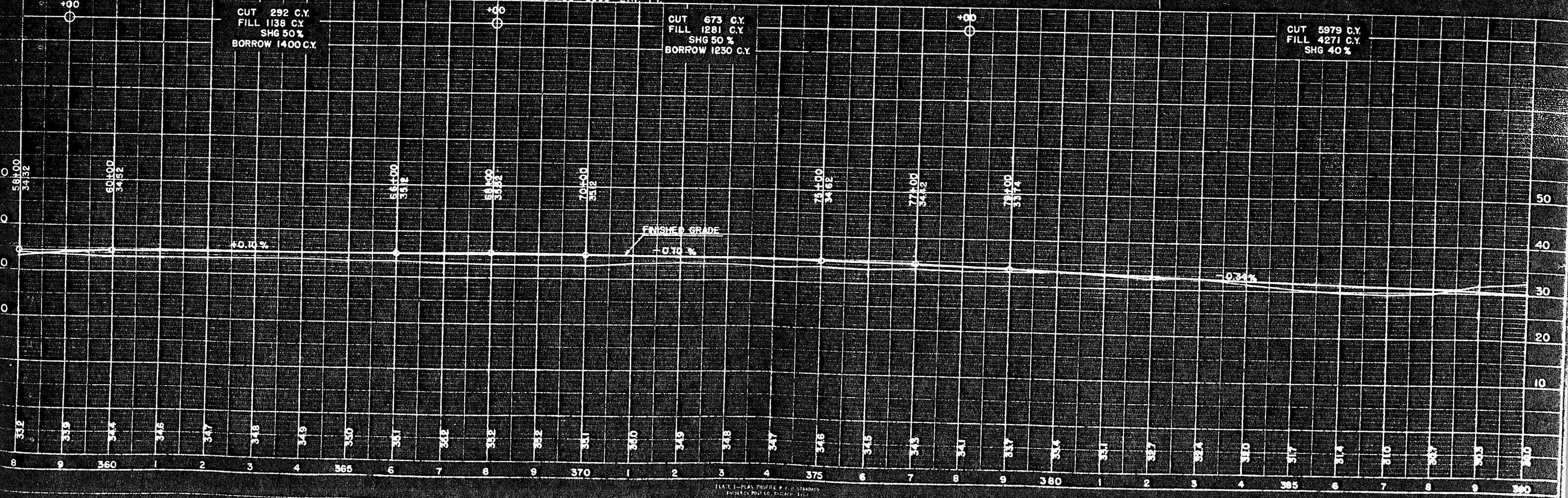
P.I. 381+55.2
 $\Delta = 4^{\circ}00'$ LT.
 D = 1'00"
 T = 200.1'
 L = 400.0'
 SE = 0.02 FT/FT.
 T = 120'



BENCH MARKS

NO	STATION	DESCRIPTION	ELEV.
41	368+10	SPIKE IN 10" JACK PINE 100' LT.	35.36
42	376+25	SPIKE IN 10" ASPEN 100' LT.	34.79
43	385+20	SPIKE IN 14" JACK PINE 110 RT.	30.82

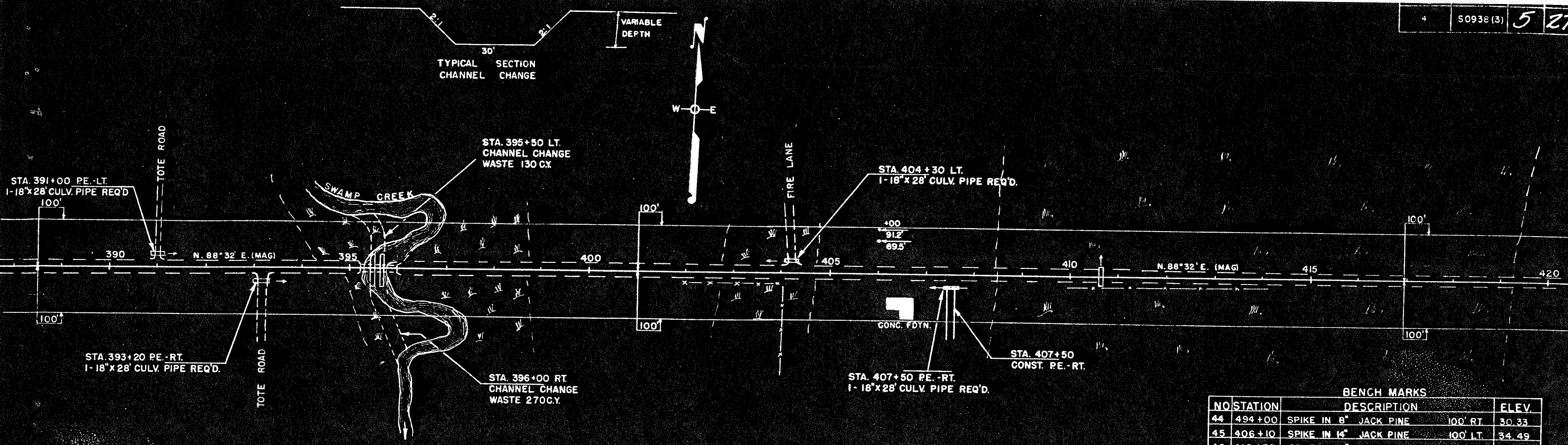
NET CENTERLINE LENGTH STA 360+00 - 390+00 = 3000 LIN. FT.



CUT 292 C.Y.
 FILL 1138 C.Y.
 SHG 50%
 BORROW 1400 C.Y.

CUT 673 C.Y.
 FILL 1281 C.Y.
 SHG 50%
 BORROW 1230 C.Y.

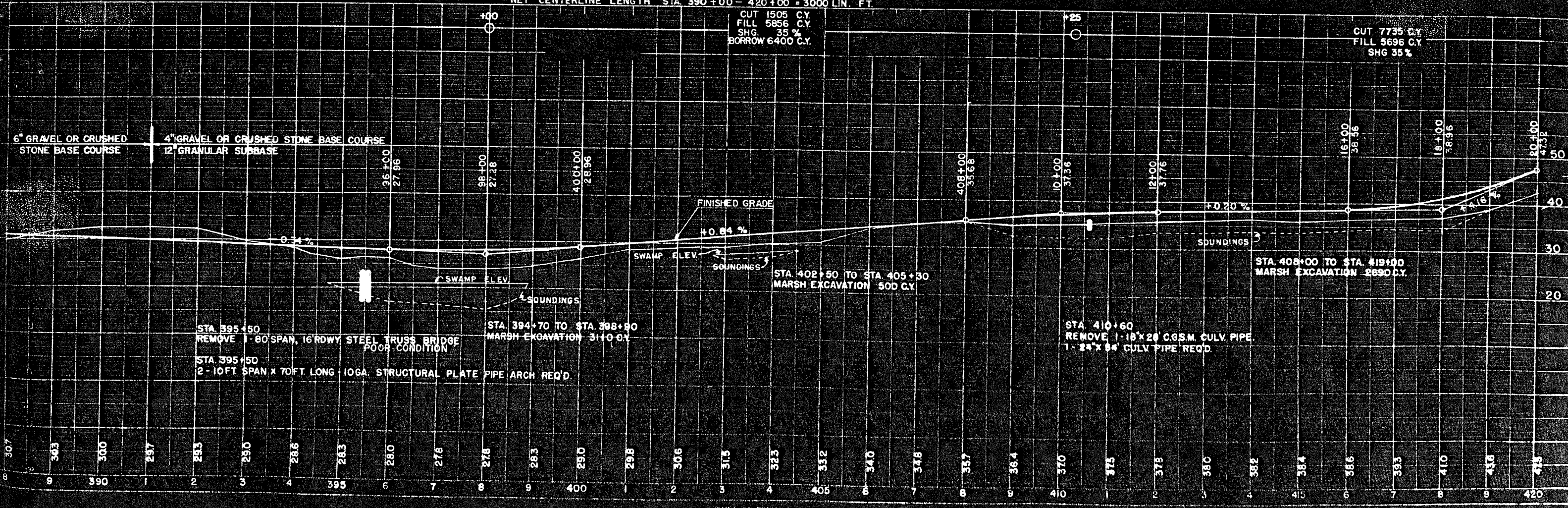
CUT 5979 C.Y.
 FILL 4271 C.Y.
 SHG 40%

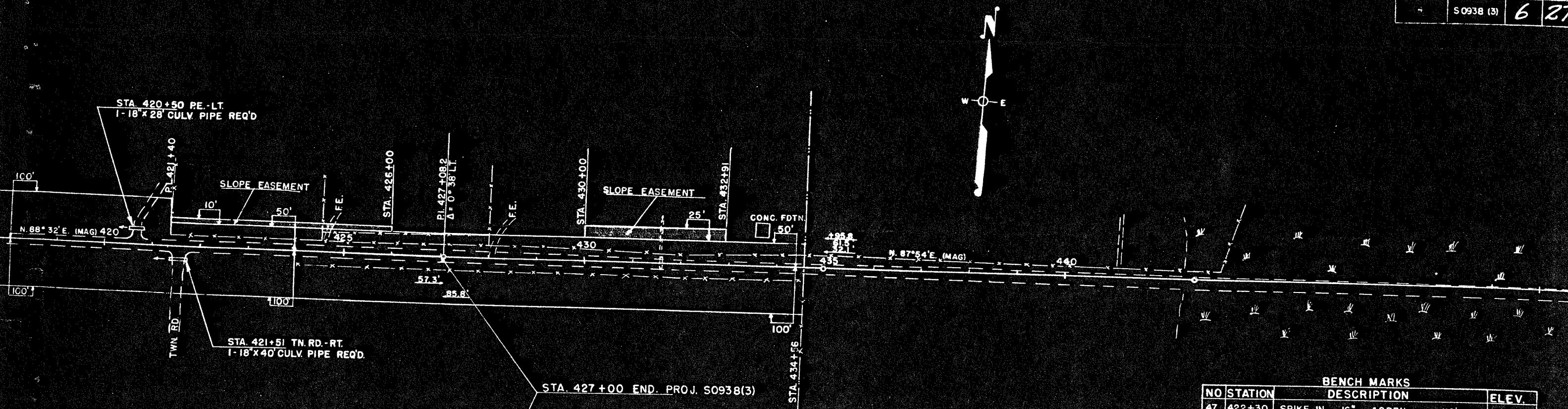


BENCH MARKS

NO	STATION	DESCRIPTION	ELEV.
44	494+00	SPIKE IN 8" JACK PINE 100' RT.	30.33
45	406+10	SPIKE IN 4" JACK PINE 100' LT.	34.49
46	416+35	SPIKE IN 6" ASPEN 90' RT.	37.51

NET CENTERLINE LENGTH STA 390+00 - 420+00 = 3000 LIN. FT.





NO	STATION	DESCRIPTION	ELEV.
47	422+30	SPIKE IN 16" ASPEN 110' LT.	58.07
48	433+20	SPIKE IN 20" ELM 115' LT.	64.66
49	440+80	SPIKE IN 8" ASPEN 95' RT.	40.37
50	455+50	SPIKE IN 6" ASPEN 120' RT.	38.64

