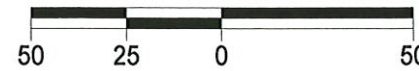


BEARINGS REFERENCED TO THE LANGLADE COUNTY COORDINATE SYSTEM GRID

WEST 1/4 CORNER SECTION 2 FOUND BRASS CAPPED MONUMENT

SCALE: 1 INCH = 50 FEET



LEGEND

- △ CALCULATED POINT
- FOUND 3/4" IRON ROD
- FOUND 1" IRON PIPE
- ⊙ FOUND 3" IRON PIPE
- ◇ SET STEEL T-POST

PLAT OF SURVEY

LOTS 1, 2, 11, AND 12 OF BLOCK 4 OF BLACK'S PLAT OF UPPER POST LAKE-WEST, LOCATED IN GOVERNMENT LOT 1, SECTION 2, T34N-R11E, TOWN OF ELCHO, LANGLADE COUNTY, WISCONSIN

I, TIMOTHY J. RUSCH, PROFESSIONAL LAND SURVEYOR, DO HEREBY CERTIFY:

THAT I HAVE SURVEYED AND MAPPED BY THE ORDER OF BOB STANGE, OWNER, LOTS 1, 2, 11, AND 12 OF BLOCK 4 OF BLACK'S PLAT OF UPPER POST LAKE-WEST, LOCATED IN GOVERNMENT LOT 1, SECTION 2, T34N-R11E.

DESCRIBED AS FOLLOWS:
COMMENCING AT THE WEST 1/4 CORNER OF SECTION 2; THENCE S01°30'12"W, ALONG THE WEST LINE OF GOVERNMENT LOT 1 OF SAID SECTION, 732.24 FEET; THENCE S86°14'15"E, 25.26 FEET TO THE POINT OF BEGINNING; THENCE CONTINUING S86°14'15"E, 196.14 FEET; THENCE S86°12'20"E, 191.67 FEET; THENCE S14°05'29"W, ALONG THE WEST RIGHT-OF-WAY OF TALL PINE LANE, 87.88 FEET; THENCE S13°34'42"W, ALONG SAID RIGHT-OF-WAY, 102.25 FEET; THENCE N88°08'06"W, 178.55 FEET; THENCE N88°29'28"W, 168.85 FEET; THENCE N01°30'06"E, ALONG THE EAST RIGHT-OF-WAY OF PRATT ROAD, 100.13 FEET; THENCE N01°45'08"E, ALONG SAID RIGHT-OF-WAY 99.88 FEET TO THE POINT OF BEGINNING.

THAT THIS SURVEY WAS FOR THE PURPOSE OF LOCATING PROPERTY BOUNDARIES AND CERTAIN TOPOGRAPHIC FEATURES ONLY. OTHER GEOGRAPHICAL FEATURES WERE NOT MAPPED.

THAT THIS IS A TRUE AND CORRECT REPRESENTATION OF THE BOUNDARIES AND TOPOGRAPHIC FEATURES SURVEYED TO THE BEST OF MY KNOWLEDGE AND BELIEF.



RECORD # 20020
LANGLADE COUNTY SURVEYORS OFFICE
FILED: 3/8/17 BY: D. T. [Signature]

SURVEYED BY:
RUSCH ENGINEERING & SURVEYING LLC
400 RUSCH ROAD
ANTIGO, WI 54409
(715)623-5044
PROJECT # 15-5461

PRATT ROAD

49.5' WIDE RIGHT-OF-WAY

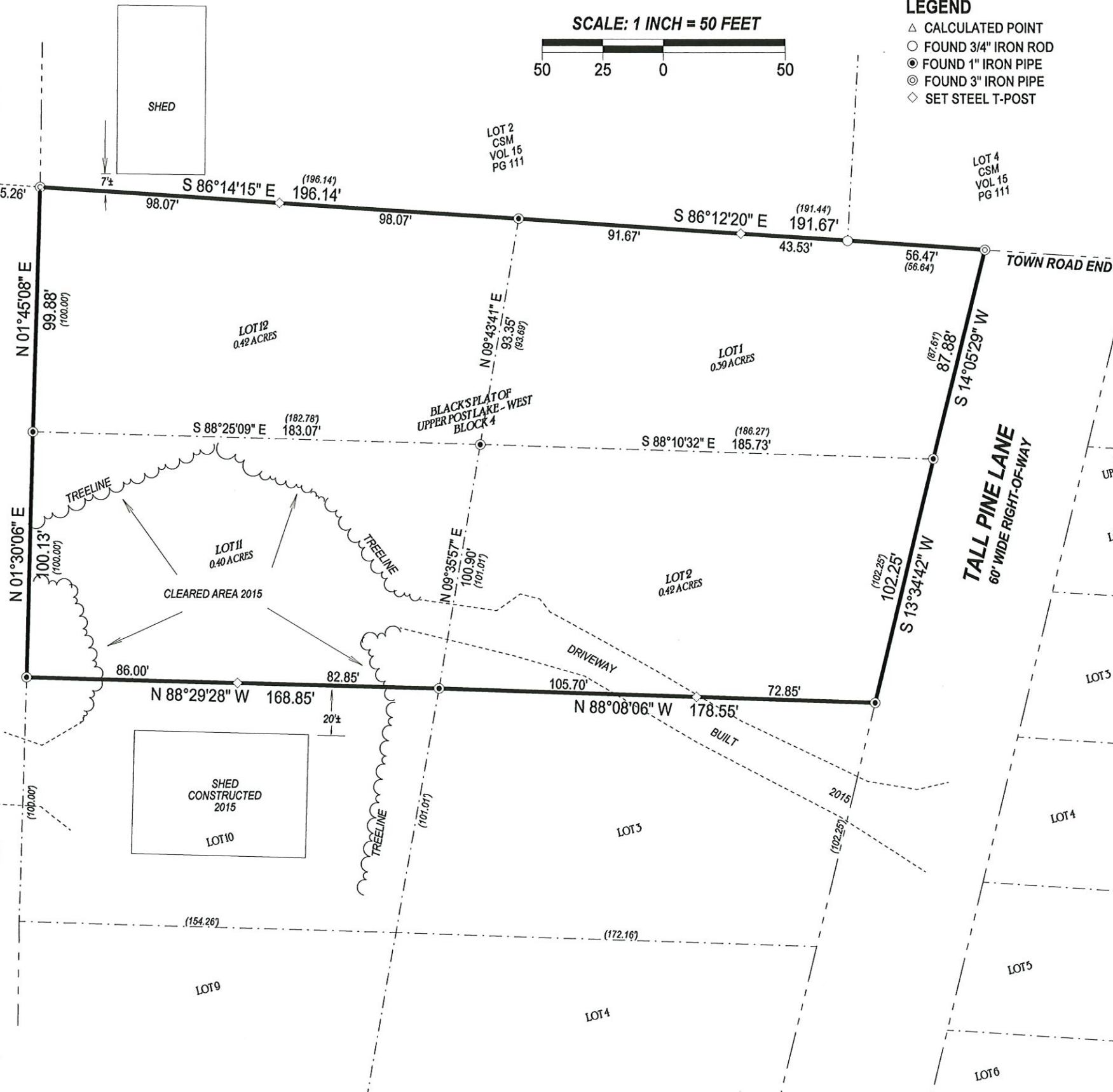
WEST LINE GOVERNMENT LOT 1 SECTION 2

S 01°30'12" W

2741.52'

732.24'

SOUTHWEST CORNER SECTION 2 FOUND IRON PIPE



TOWN ROAD END

TALL PINE LANE
60' WIDE RIGHT-OF-WAY

LOT 2
CSM
VOL 15
PG 111

LOT 4
CSM
VOL 15
PG 111

LOT 12
0.42 ACRES

LOT 1
0.59 ACRES

LOT 11
0.40 ACRES

LOT 2
0.42 ACRES

SHED
CONSTRUCTED
2015
LOT 10

LOT 4

LOT 6

LOT 5

LOT 4

LOT 3

LOT 2

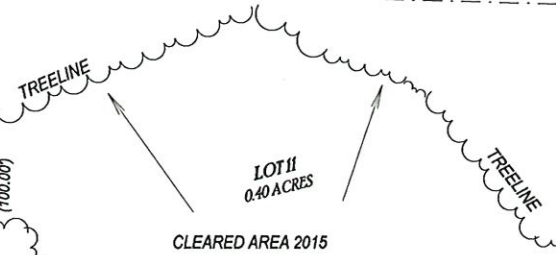
LOT 1

LOT 2

LOT 3

LOT 4

LOT 5



DRIVEWAY

BUILT

TREELINE

TREELINE

TREELINE

TREELINE

7 1/2'

20 1/2'

25.26'

99.88'

100.13'

100.00'

154.26'

98.07'

182.78'

86.00'

172.16'

196.14'

183.07'

168.85'

172.16'

98.07'

185.73'

178.55'

172.16'

91.67'

186.27'

105.70'

172.16'

43.53'

186.27'

72.85'

172.16'

56.47'

186.27'

102.25'

172.16'

87.88'

186.27'

102.25'

172.16'

87.88'

186.27'

102.25'

172.16'

102.25'

186.27'

102.25'

172.16'

102.25'

186.27'

102.25'

172.16'

102.25'

186.27'

102.25'

172.16'

102.25'

186.27'

102.25'

172.16'

102.25'

186.27'

102.25'

172.16'

102.25'

186.27'

102.25'

172.16'

102.25'

186.27'

102.25'

172.16'

102.25'

186.27'

102.25'

172.16'

102.25'

186.27'

102.25'

172.16'

102.25'

186.27'

102.25'

172.16'

102.25'

186.27'

102.25'

172.16'

102.25'

186.27'

102.25'

172.16'

102.25'

186.27'

102.25'

172.16'

102.25'

186.27'

102.25'

172.16'

102.25'

186.27'

102.25'

172.16'

102.25'

186.27'

102.25'

172.16'

102.25'

186.27'

102.25'

172.16'

102.25'

186.27'

102.25'

172.16'

102.25'

186.27'

102.25'

172.16'

102.25'

186.27'

102.25'

172.16'

102.25'

186.27'

102.25'

172.16'

102.25'

186.27'

102.25'

172.16'

102.25'

186.27'

102.25'

172.16'

102.25'

186.27'

102.25'

172.16'

102.25'

186.27'

102.25'

172.16'

102.25'

186.27'

102.25'

172.16'