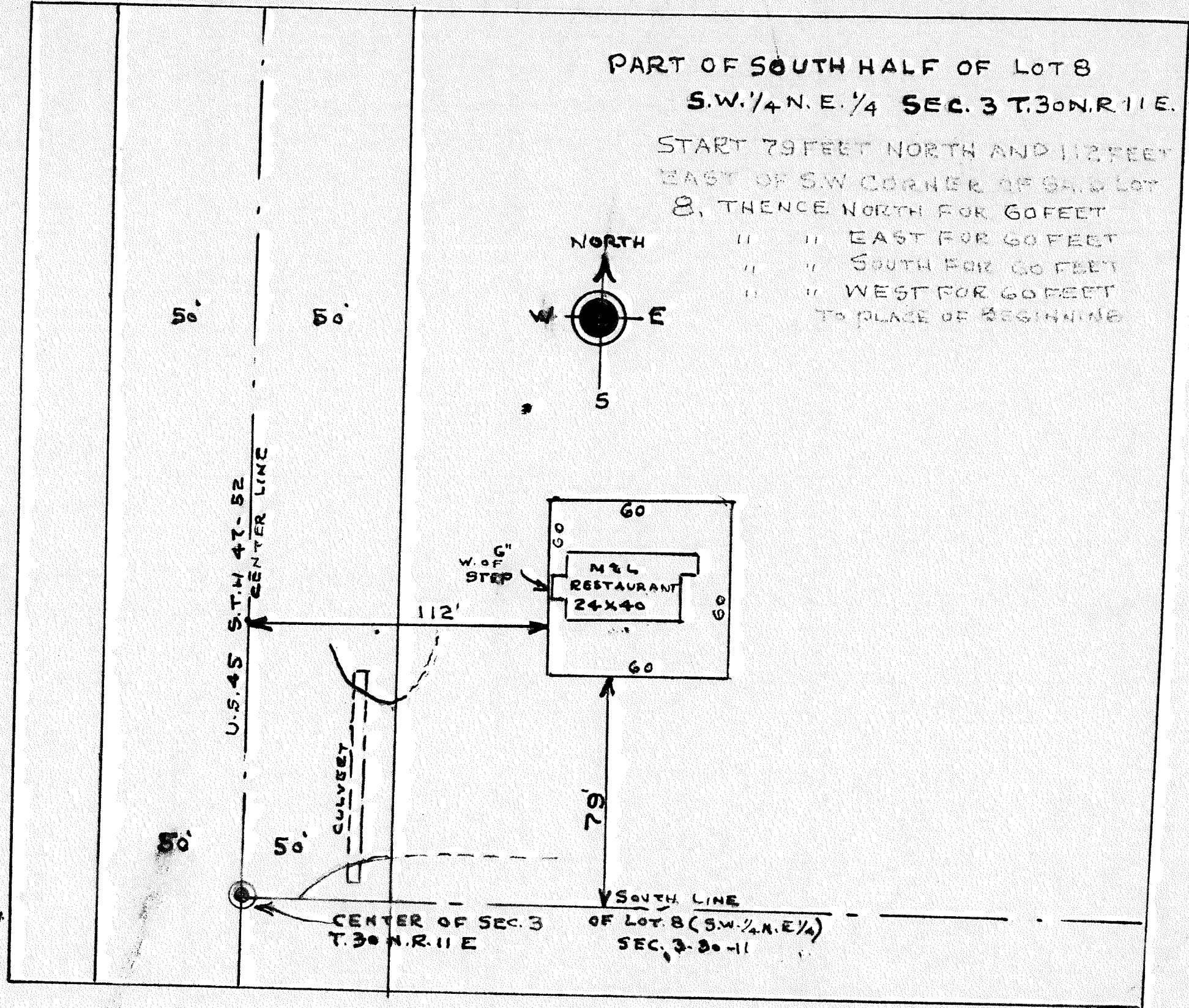
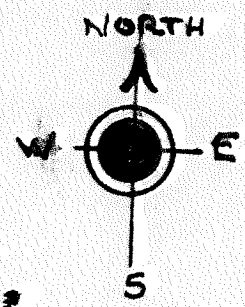


PART OF SOUTH HALF OF LOT 8
 S.W. 1/4 N.E. 1/4 SEC. 3 T. 30 N. R. 11 E.

START 79 FEET NORTH AND 112 FEET
 EAST OF S.W. CORNER OF SAID LOT
 8, THENCE NORTH FOR 60 FEET
 " " EAST FOR 60 FEET
 " " SOUTH FOR 60 FEET
 " " WEST FOR 60 FEET
 TO PLACE OF BEGINNING



RECORD # 20024
 LANGLADE COUNTY SURVEYORS OFFICE
 DATE FILED: 6/4/93 BY: D.T.