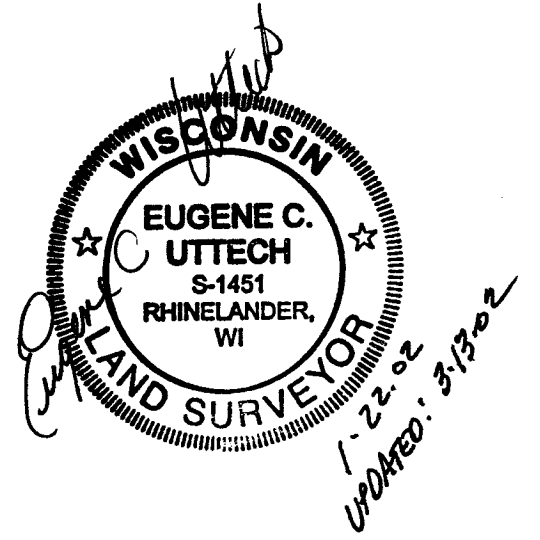
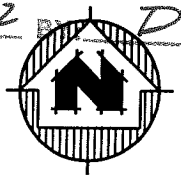


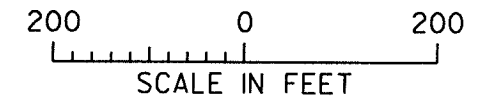
BOUNDARY SURVEY OF THE SE1/4 OF THE NW1/4 OF SECTION 10,
 T.31 N., R. 11 E., TOWN OF ANTIGO, LANGLADE CO, WI.
 EXCEPT THOSE LANDS DESCRIBED IN DOCUMENT NO. 252472
 IN THE LANGLADE CO. REGISTER OF DEEDS.

RECORD # 2008 20030
 LANGLADE COUNTY SURVEYORS OFFICE
 DATE FILED: 5/1/02 BY D. Tlusty

- LEGEND**
- ▲ MAG NAIL SET
 - △ SPIKE GEAR SHAFT SET BY COUNTY SURVEYOR
 - 3/4" X 24" REBAR SET
 - ↓ LOW WET AREA



I, EUGENE C. UTTECH, REGISTERED LAND SURVEYOR OF THE STATE OF WISCONSIN, DO HEREBY CERTIFY THAT THIS MAP IS TRUE AND CORRECT TO THE BEST OF MY KNOWLEDGE AND BELIEF.

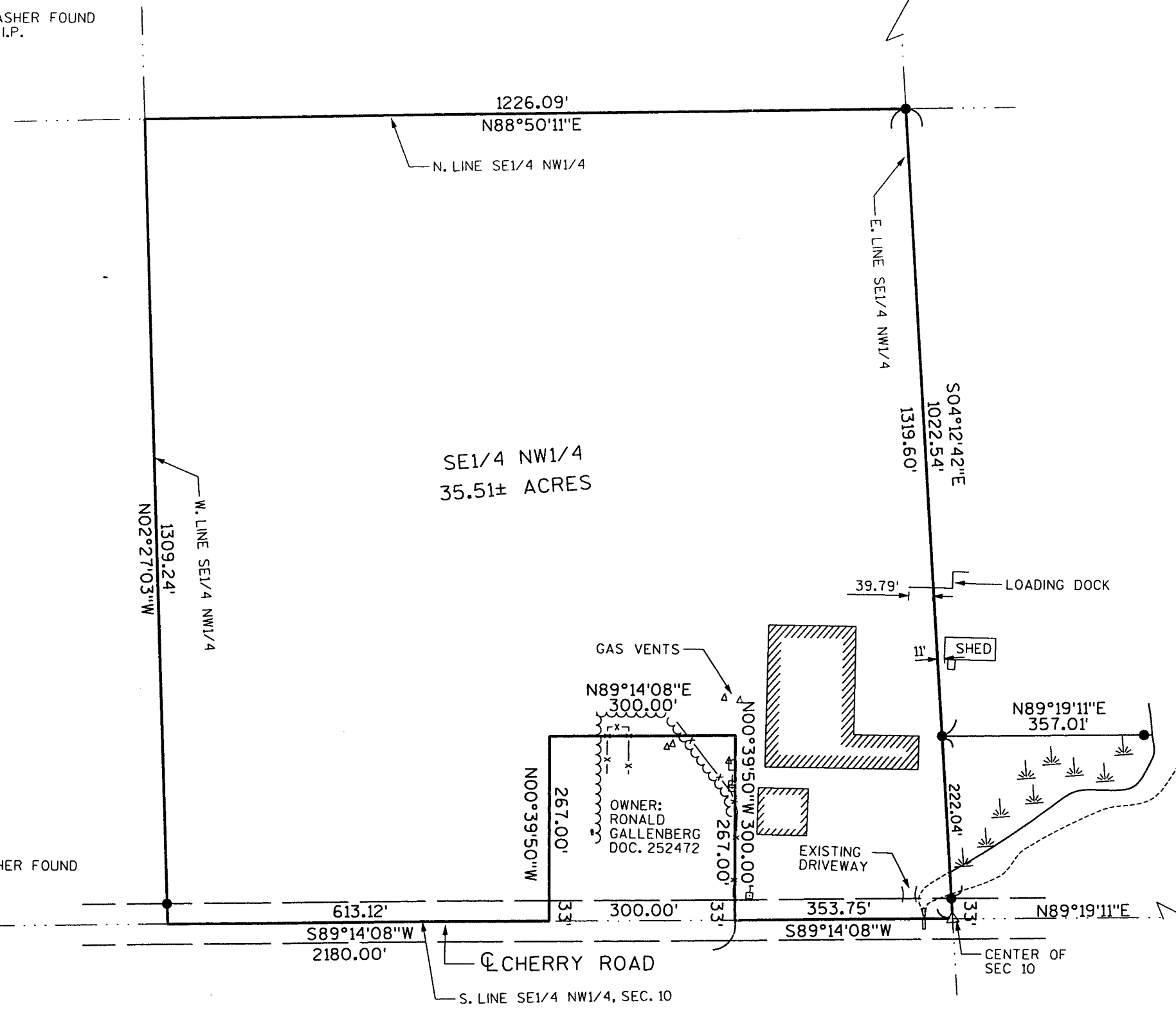


NW CORNER SEC. 10
 NAIL AND WASHER FOUND OVER 1" DIA. I.P.

N00°39'50"W 2600.27'

NAIL AND WASHER FOUND W1/4 CORNER SEC. 10

NAIL AND WASHER FOUND E1/4 CORNER SEC. 10



BOUNDARY SURVEY			
NORTEC			
W. 9112 CHERRY RD ANTIGO, WI			
MSA		<small>TRANSPORTATION • MUNICIPAL DEVELOPMENT • ENVIRONMENTAL</small>	
<small>PROFESSIONAL ENGINEER</small>		<small>1835 N. Stevens St., Rhinelander, WI 54501 715-362-3344 / 1-800-844-7854 Fax: 715-362-4116 © MSA PROFESSIONAL SERVICES</small>	
DRAWN BY	CAR	DATE	1/8/02
CHECKED BY	ECU	SCALE	AS SHOWN
			SHEET 1 of 1 FILE NO. 980327-1