

PLAT OF SURVEY AND UTILITY LOCATION OF THE WEST 77.00FT. OF LOTS 17 AND 18 AND THE WEST 77.00FT. OF THE SOUTH 32.00FT. OF LOT 19, ALL IN BLOCK 34 OF THE RECORDED PLAT OF THE VILLAGE (NOW CITY) OF ANTIGO, BEING IN THE NW 1/4 OF SECTION 29, TOWNSHIP 31 NORTH RANGE 11 EAST.

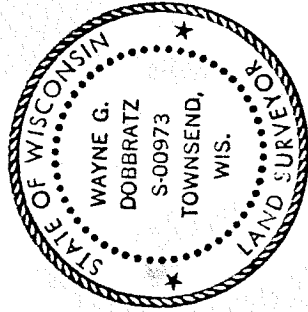
NOTE! THIS COMBINED LEGAL DESCRIPTION IS BASED SOLELY UPON LEGAL DESCRIPTIONS FURNISHED BY THE M & I BANK OF ANTIGO!

I HEREBY CERTIFY THAT THIS SURVEY IS CORRECT TO THE BEST OF MY KNOWLEDGE AND BELIEF!

REVISED 10/31/89
UTILITY LOCATION

Wayne G. Dobbratz 9/22/89

PREPARED FOR: M & I BANK OF ANTIGO



BLOCK SKETCH

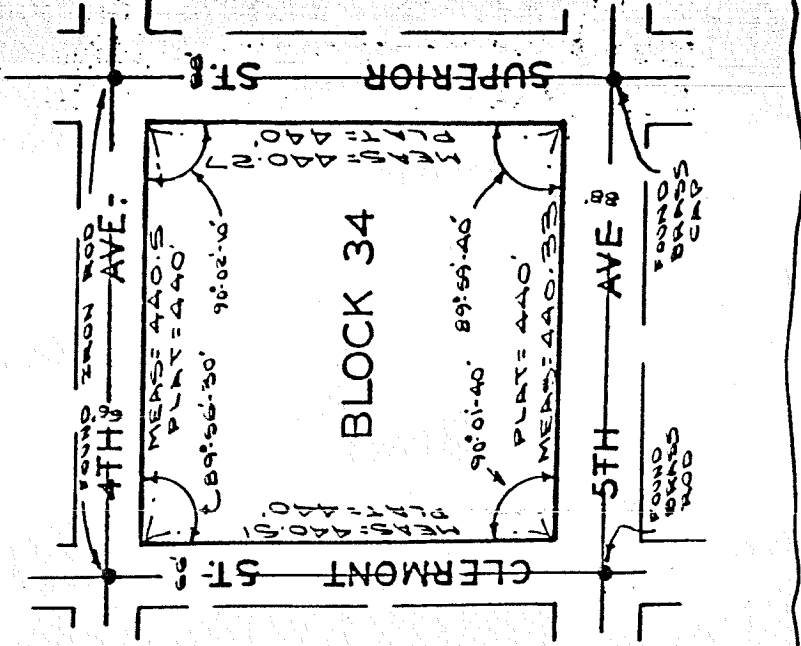


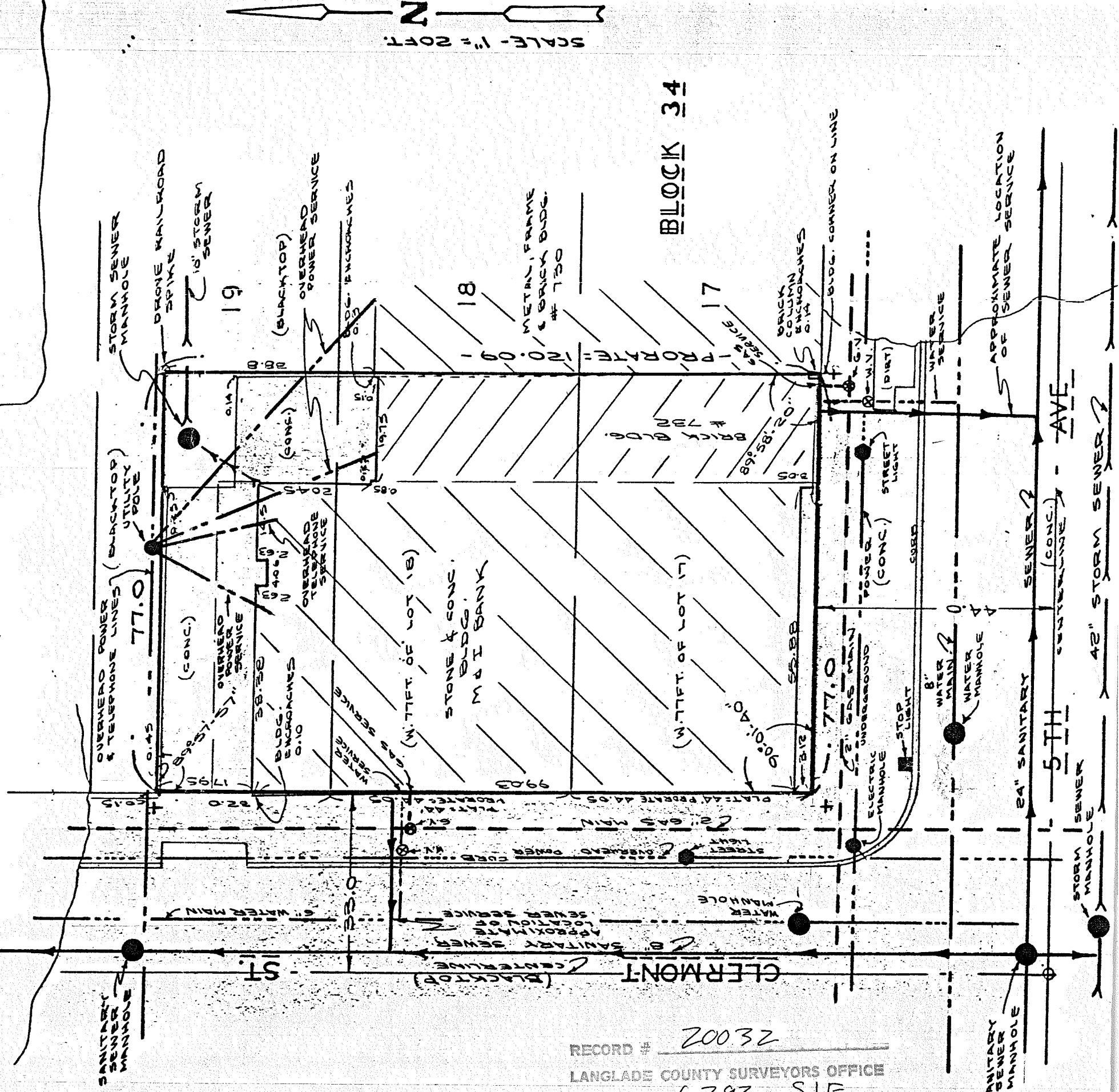
TABLE OF ACREAGE

9,247.36 SQ.FT. = 0.212 AC. GROSS AREA THIS SURVEY

LEGEND

●	DENOTES MANHOLE
---	OVERHEAD POWER & TELEPHONE LINES
---	STORM SEWER
---	SANITARY SEWER
---	GAS MAIN
---	OVERHEAD POWER LINE
---	UNDER GROUND POWER LINE
---	WATER MAIN
●	STREET LIGHT
●	WATER VALVE OR GAS VALVE

NOTE! ALL UTILITY LOCATIONS SHOWN HEREON ARE APPROXIMATE AND ARE AS MARKED BY UTILITY CO'S. OR AS PER EXISTING CITY RECORDS!



RECORD # 20032
LANGLADE COUNTY SURVEYORS OFFICE
DATE FILED: 6-7-93 BY: SJF