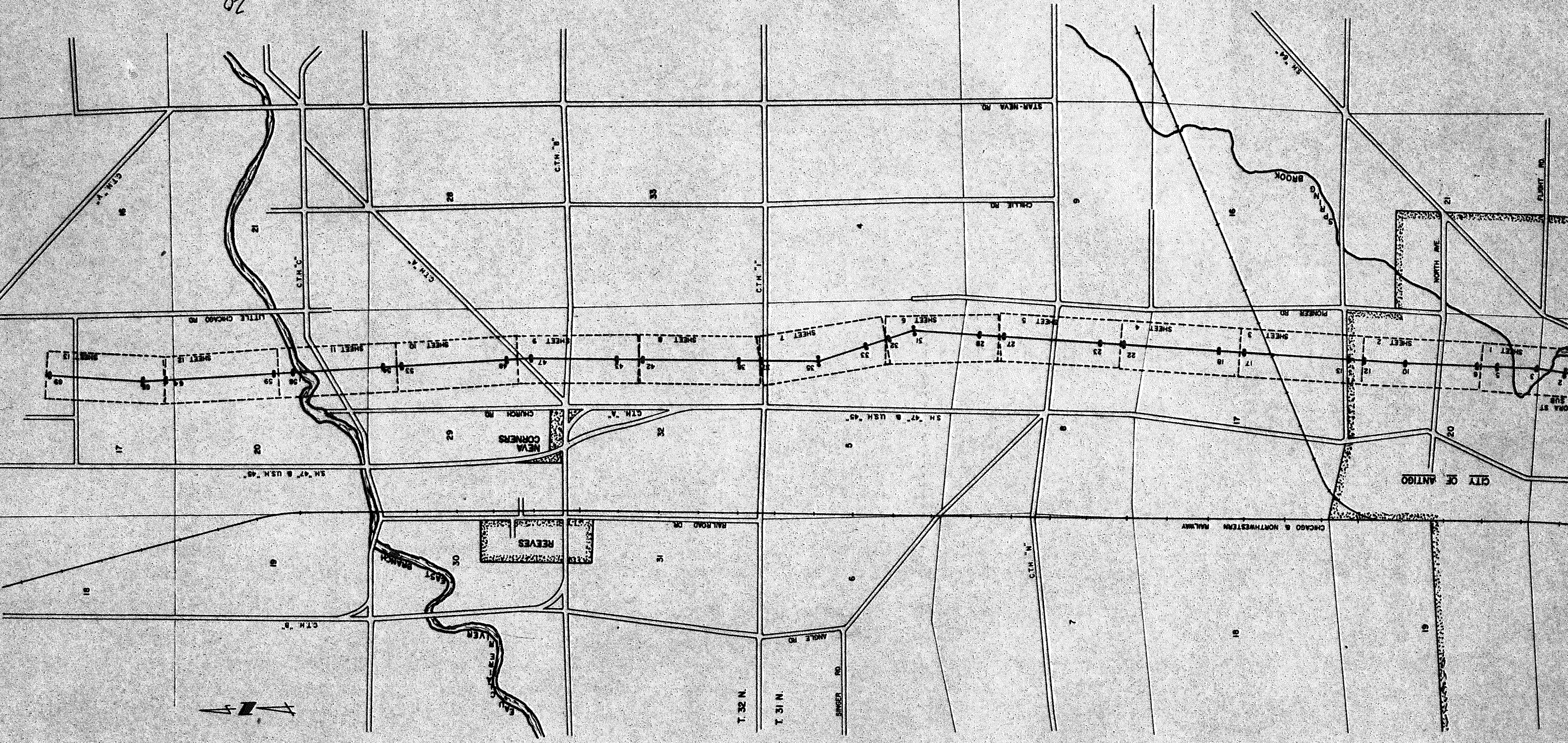


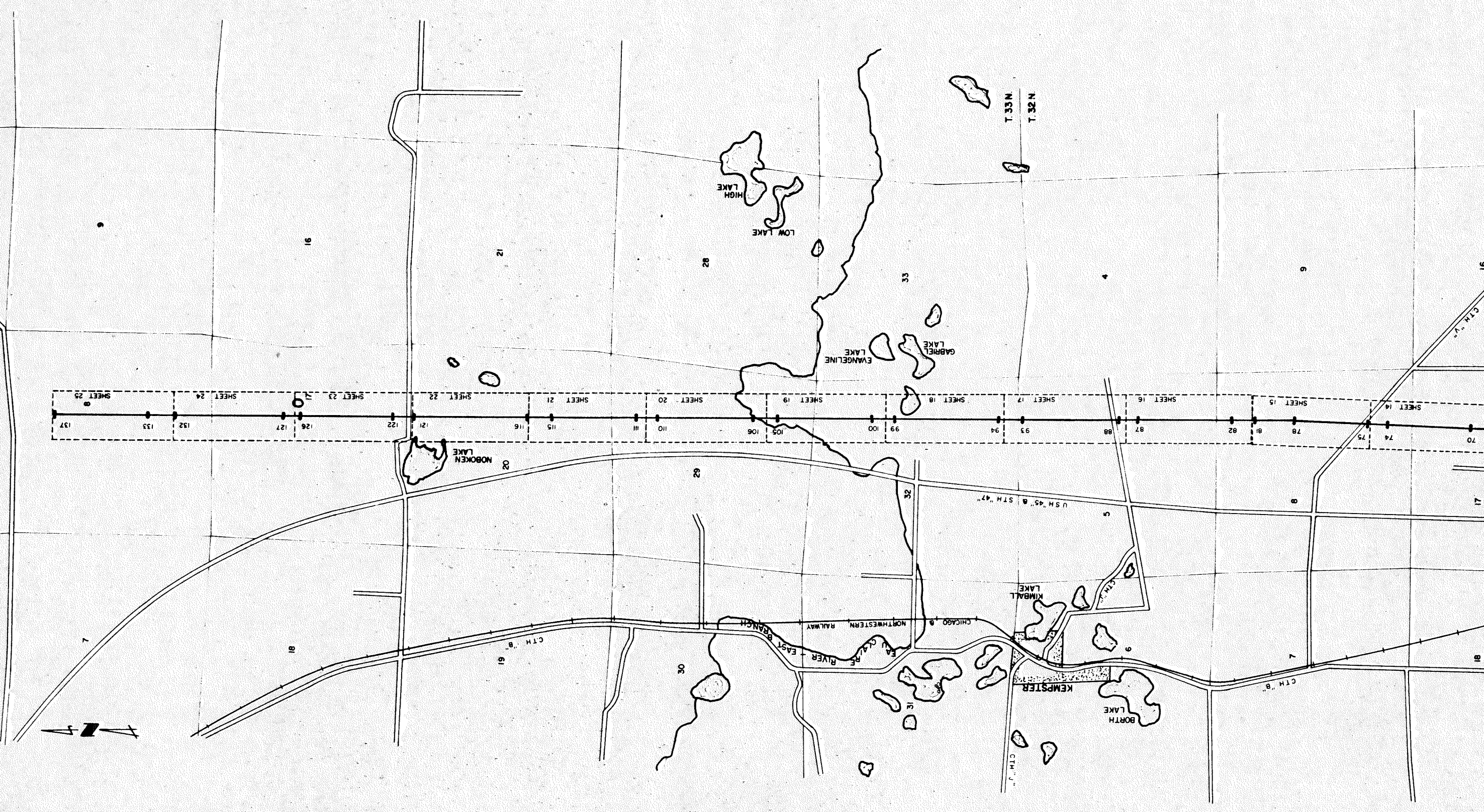
ROUTE MAP - "A-53"
ANTIGO TO RHINELANDER
SCALE: 4.1 MILE APPROX

RECORD # 20094
DATE FILED: 6-24-93 BY: SCS
LANGLADE COUNTY SURVEYORS OFFICE

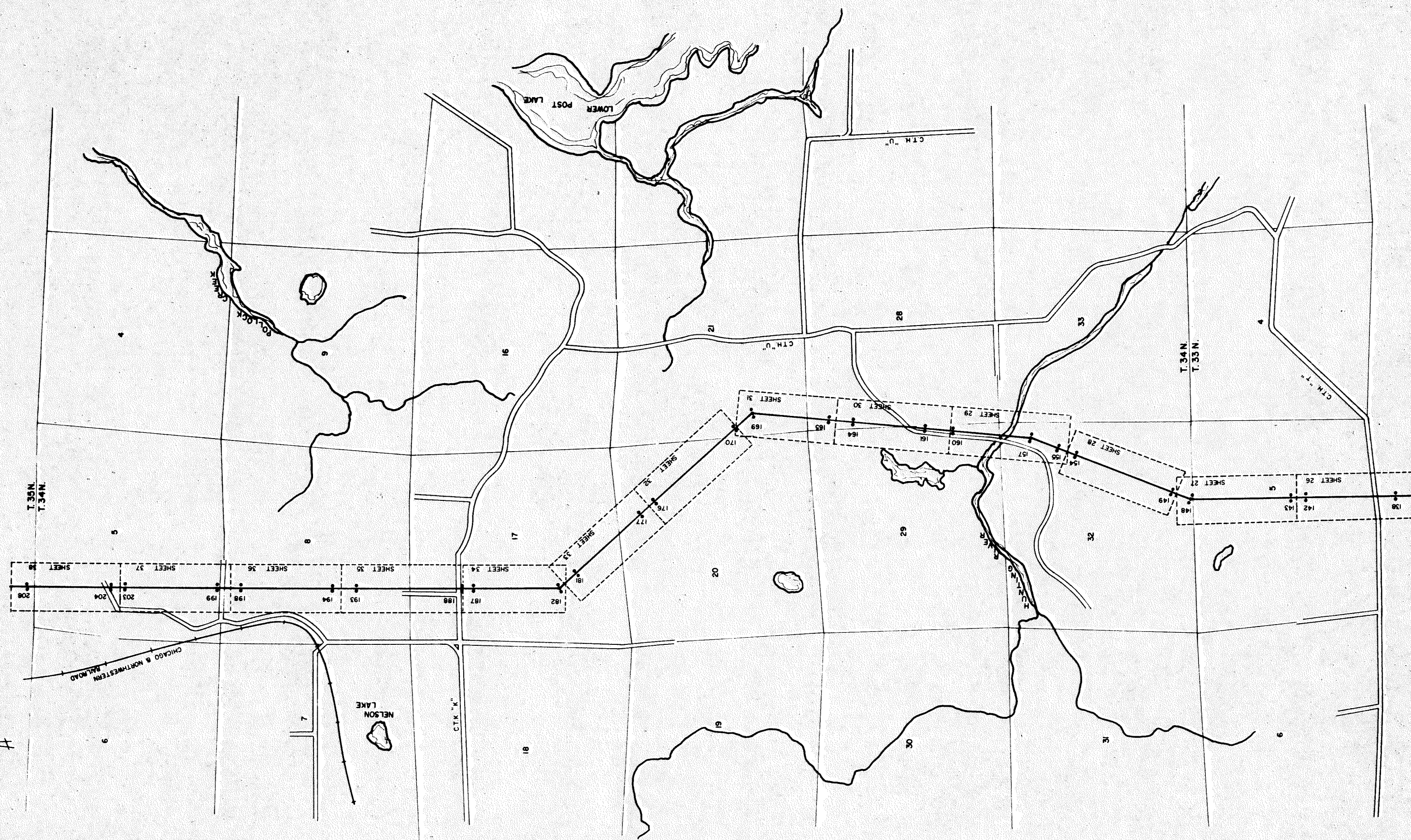
20
20034 IN 32-11
20035 IN 33-11
20036 IN 34-11
D.T.
11/25/15



ROUTE MAP — "A-53"
ANTIGO TO RHINELANDER
SCALE: 4" = 1 MILE APPROX



ROUTE MAP — "A-53"
ANTIGO TO RHINELANDER
SCALE: 4.1 MILE APPROX



T. 35 N.
T. 34 N.

T. 34 N.
T. 33 N.

CTH "U"

CTH "U"

CTH "T"

CTK "K"

CHICAGO & NORTHWESTERN
RAILROAD

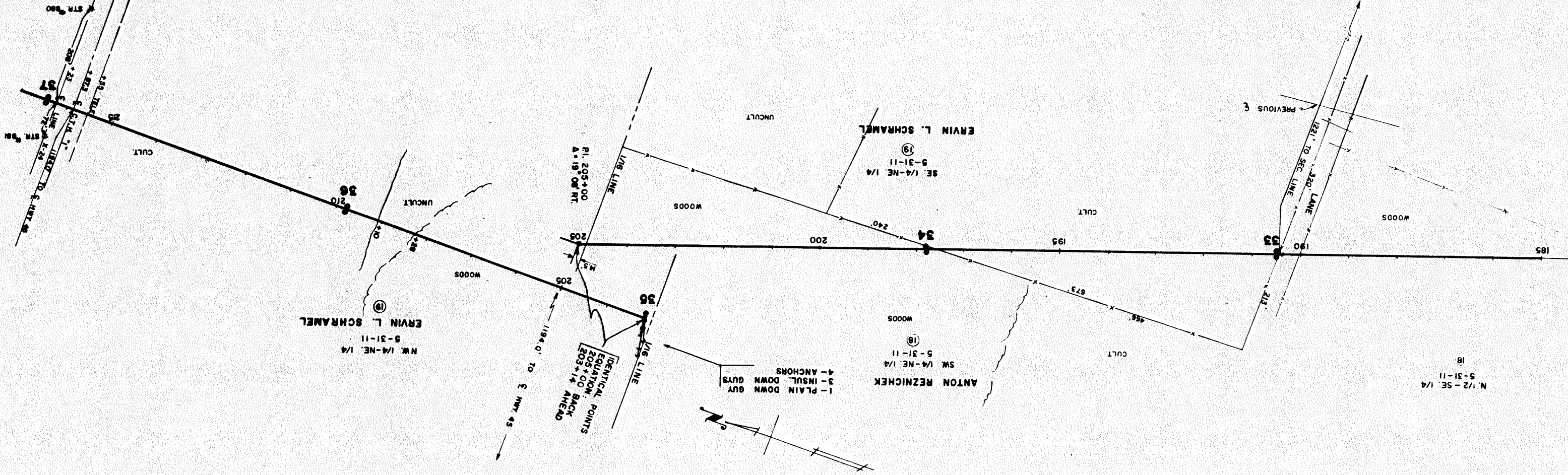
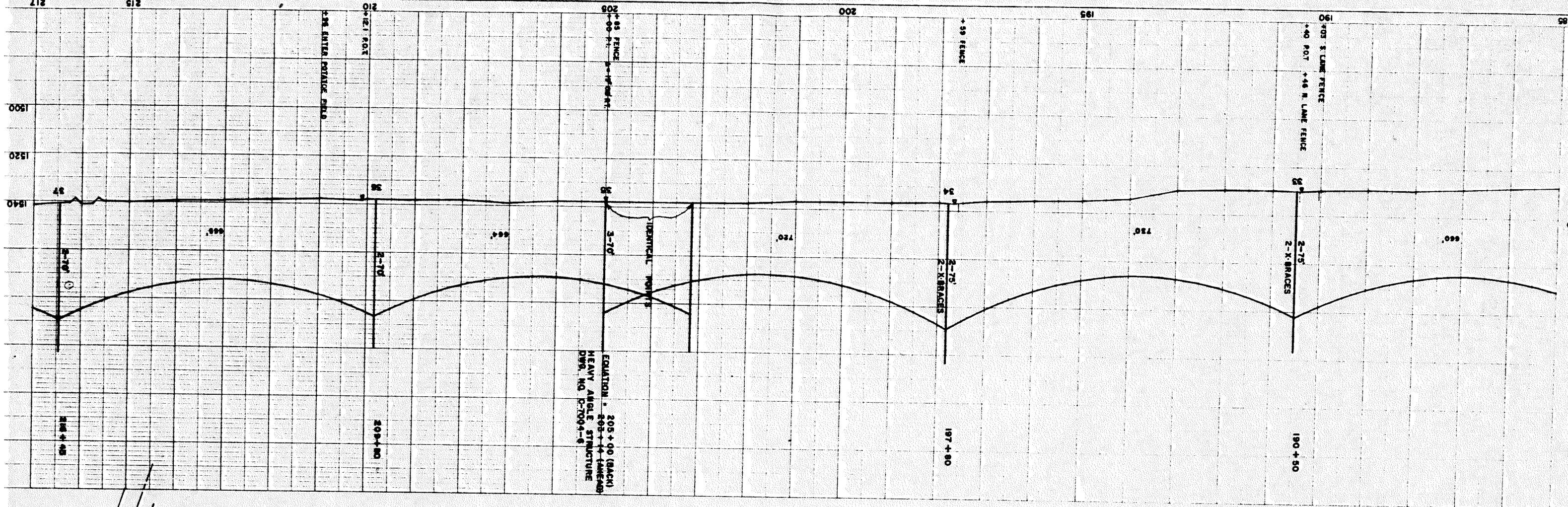
NELSON
LAKE

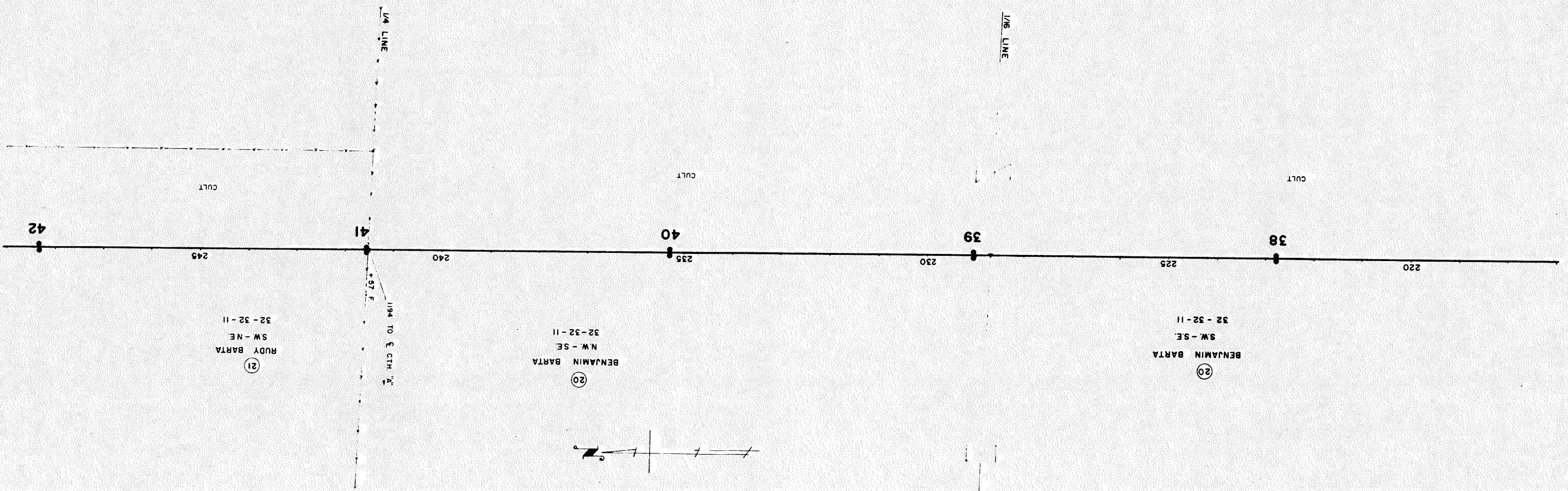
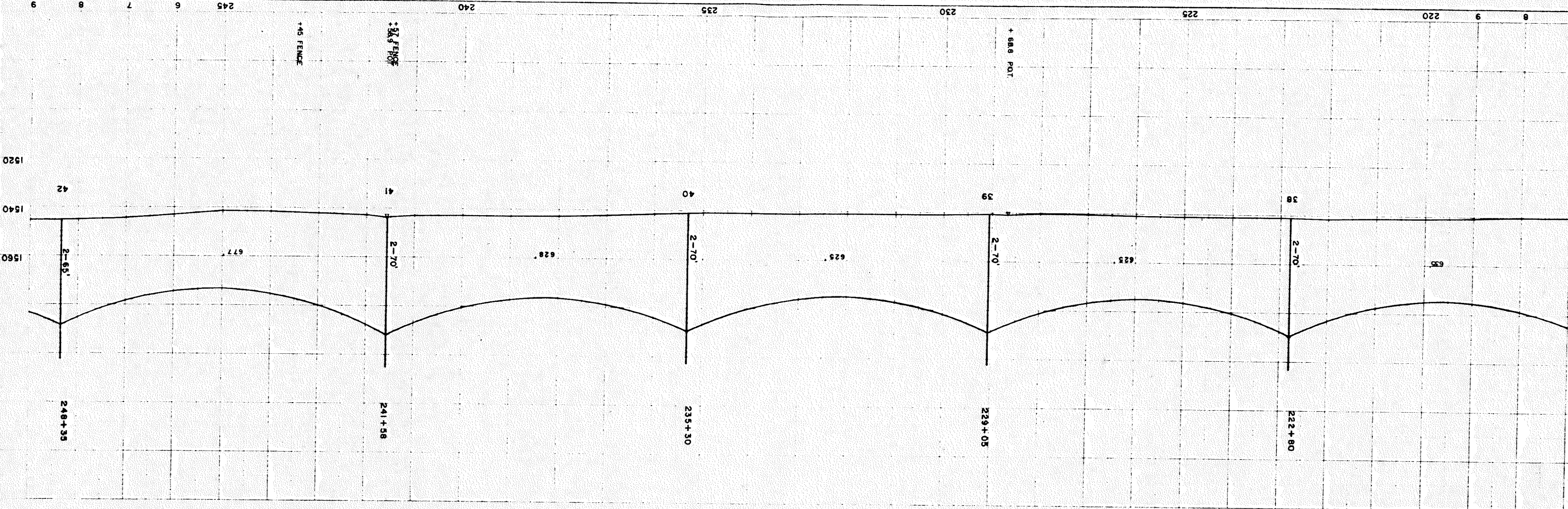
LOWER
POST
LAKE

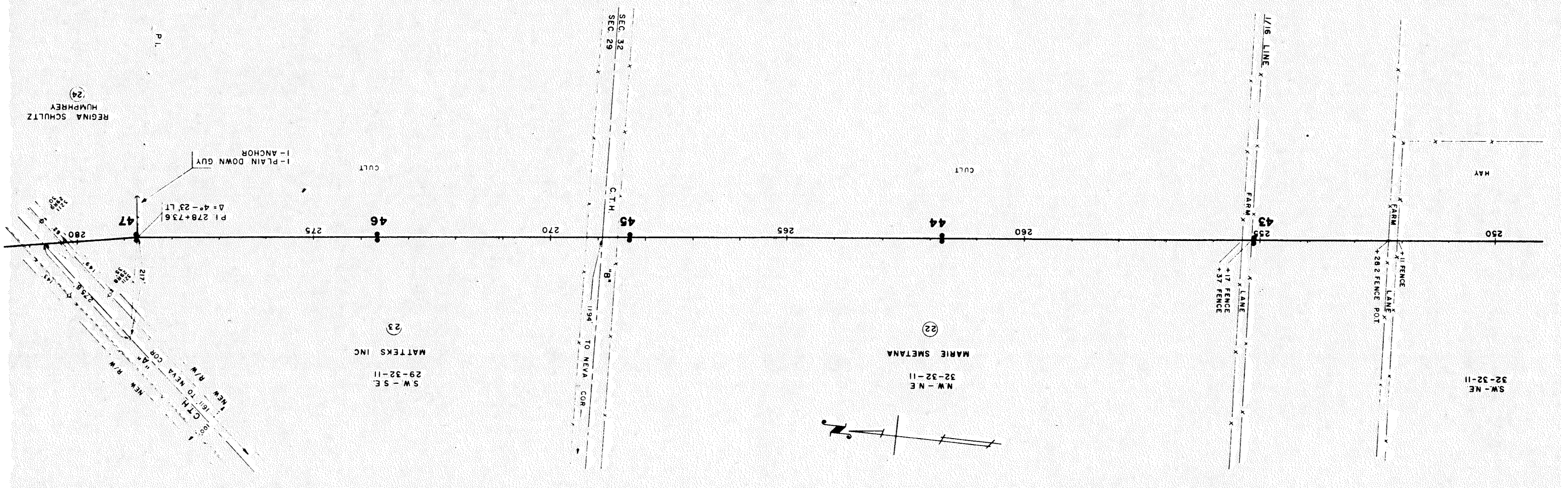
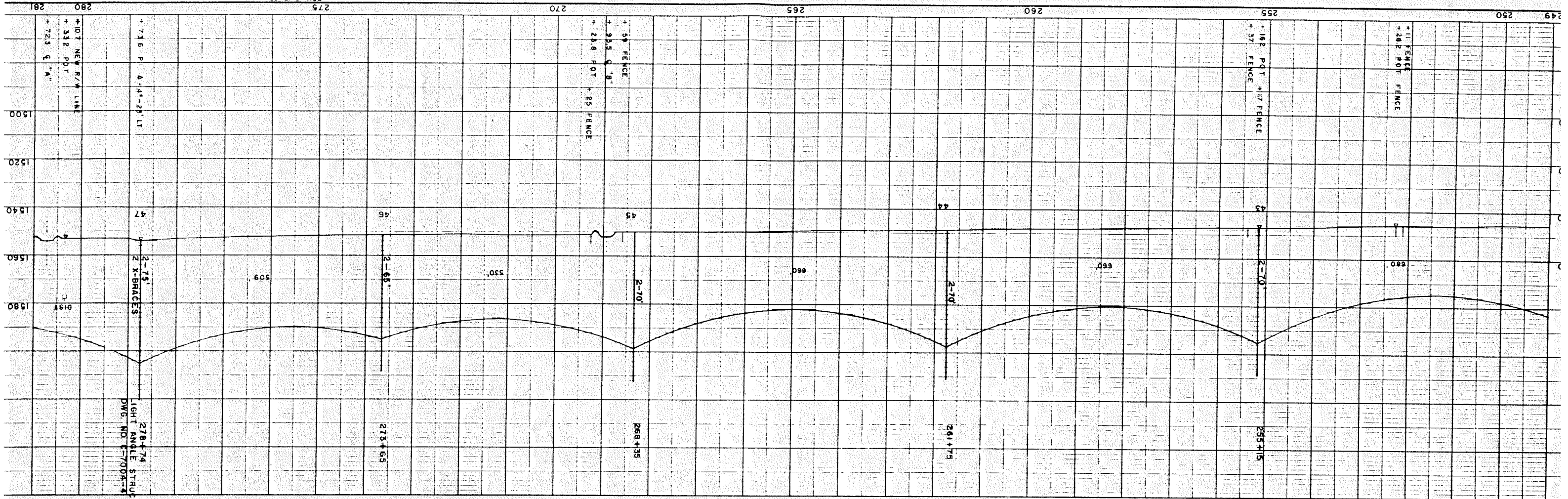
KINN
EAR

ROL
LOCK

ANT
IGO







REVISED 3-1-65 V.V.K.

