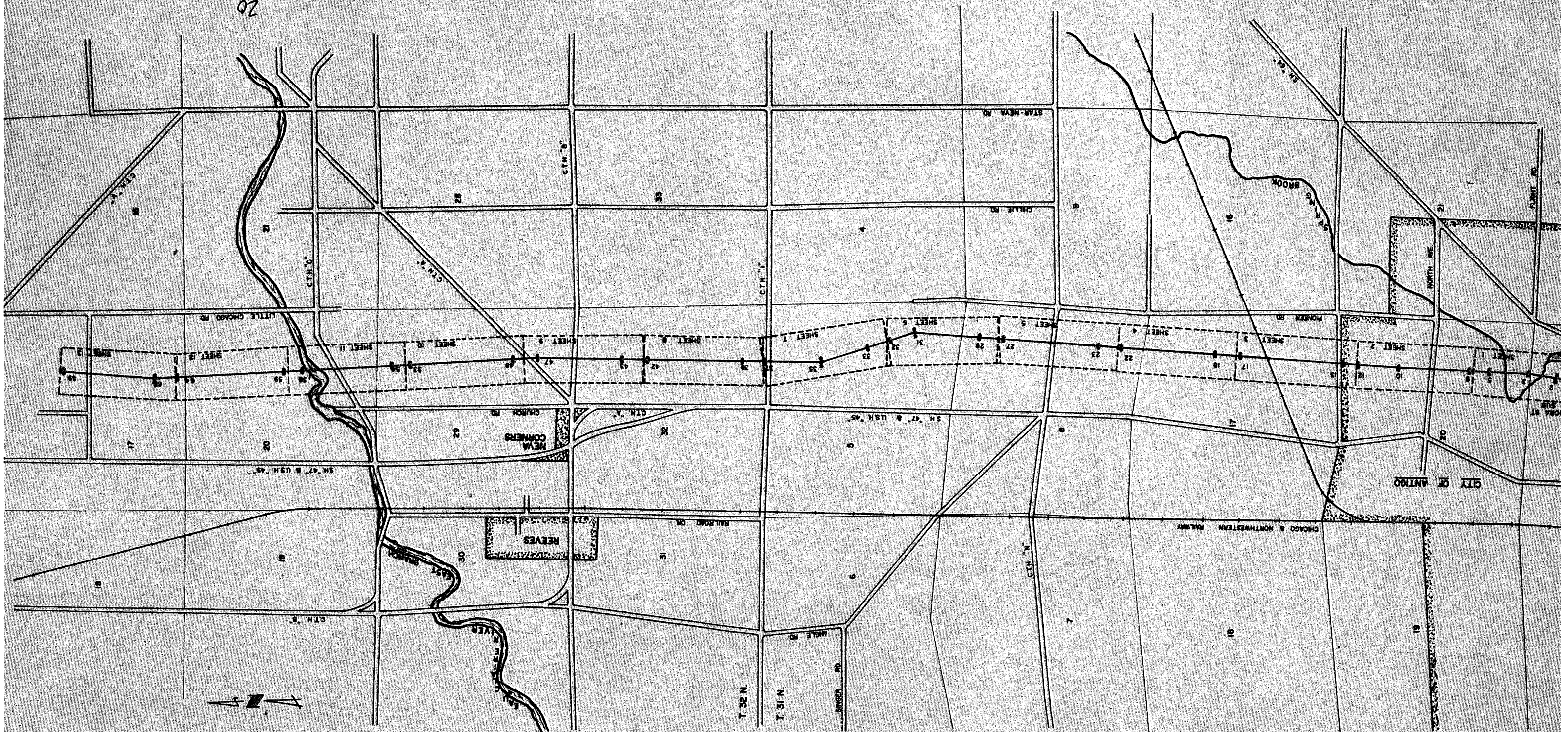


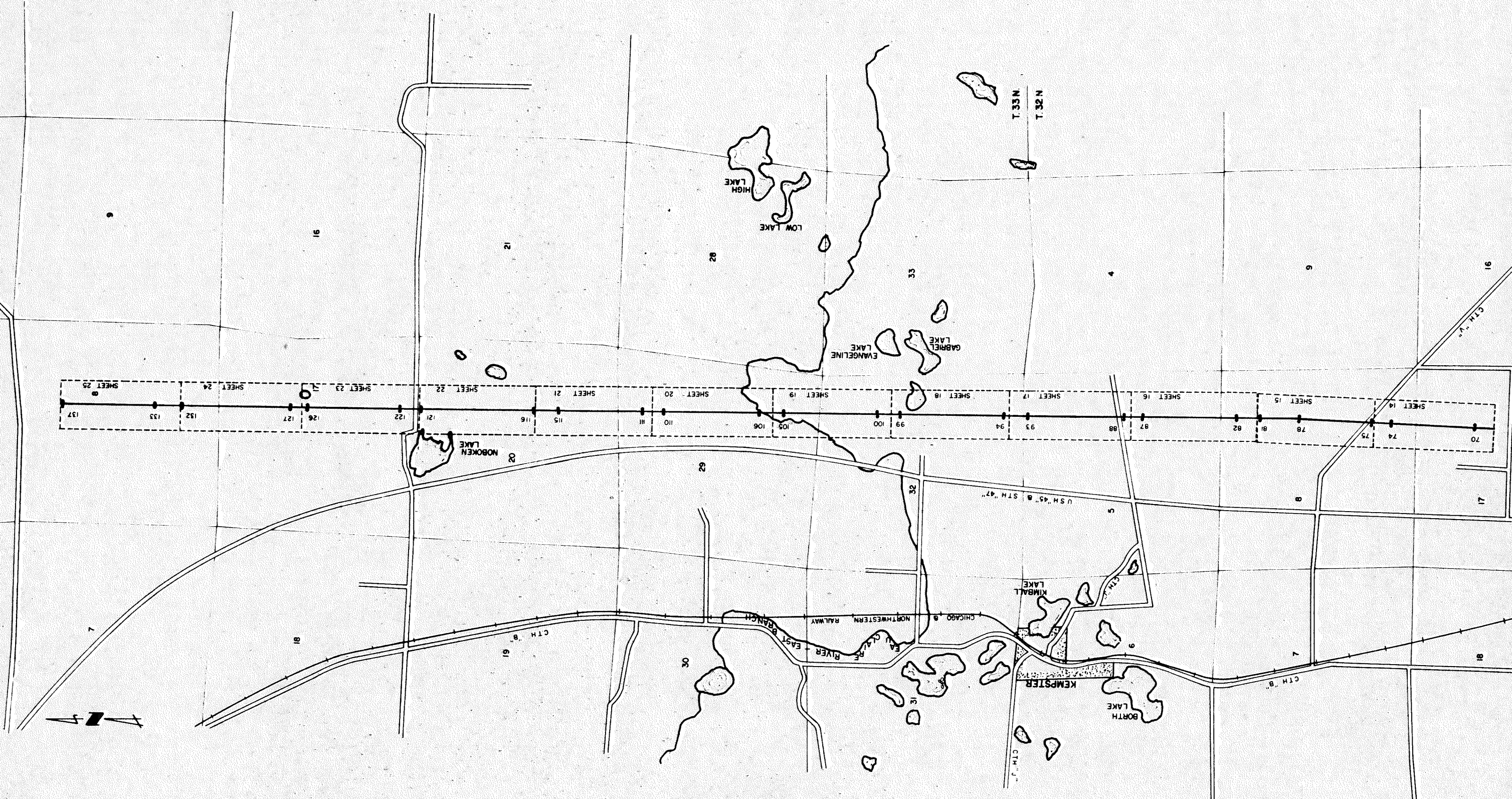
ROUTE MAP - "A-53"
ANTIGO TO RHINELANDER
SCALE: 4" = 1 MILE APPROX

RECORD # 20094
DATE FILED: 6-24-93 BY: S.F.
LANGLADE COUNTY SURVEYORS OFFICE

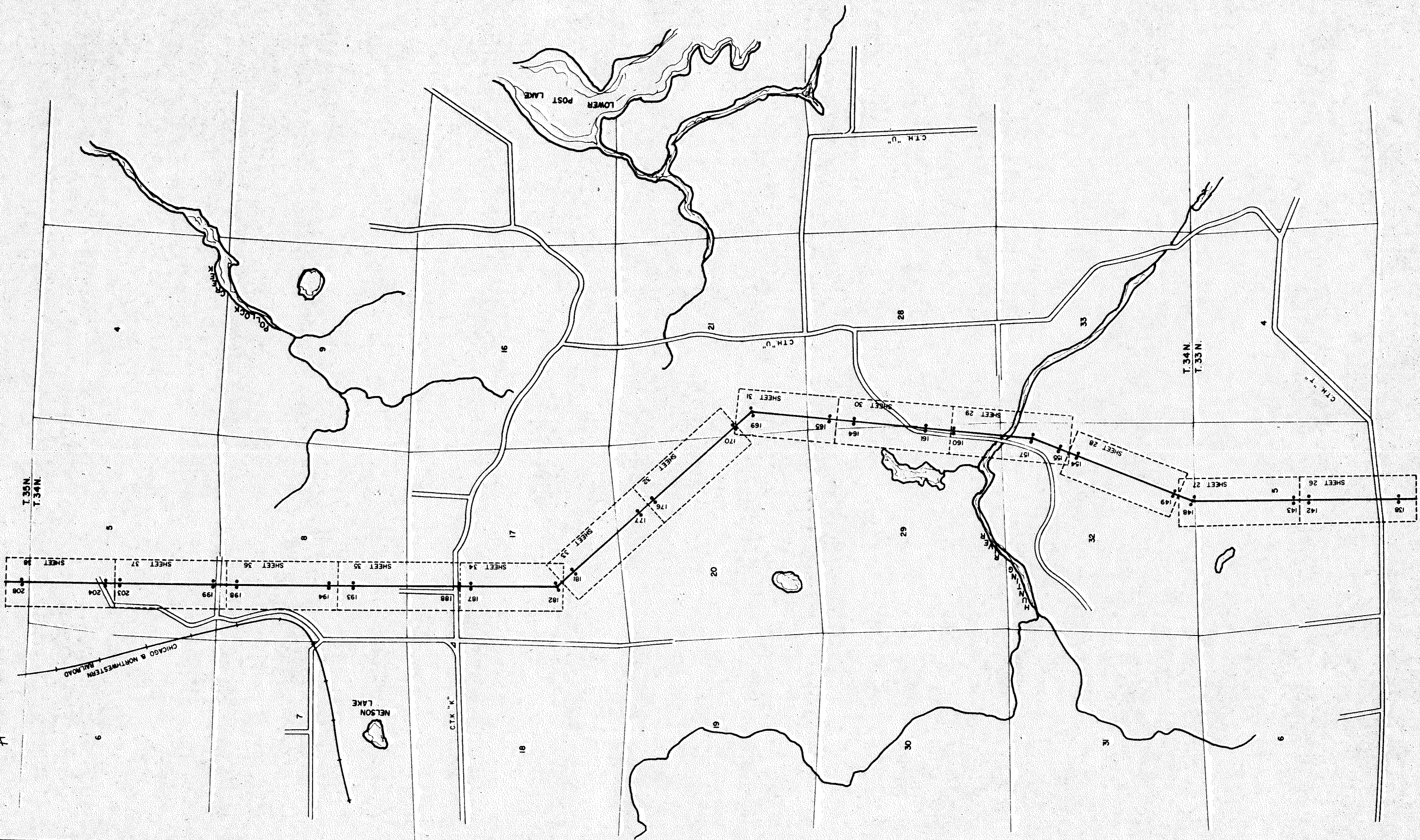
20
20034 IN 32-11
20035 IN 33-11
20036 IN 34-11
D.T.
11/25/15

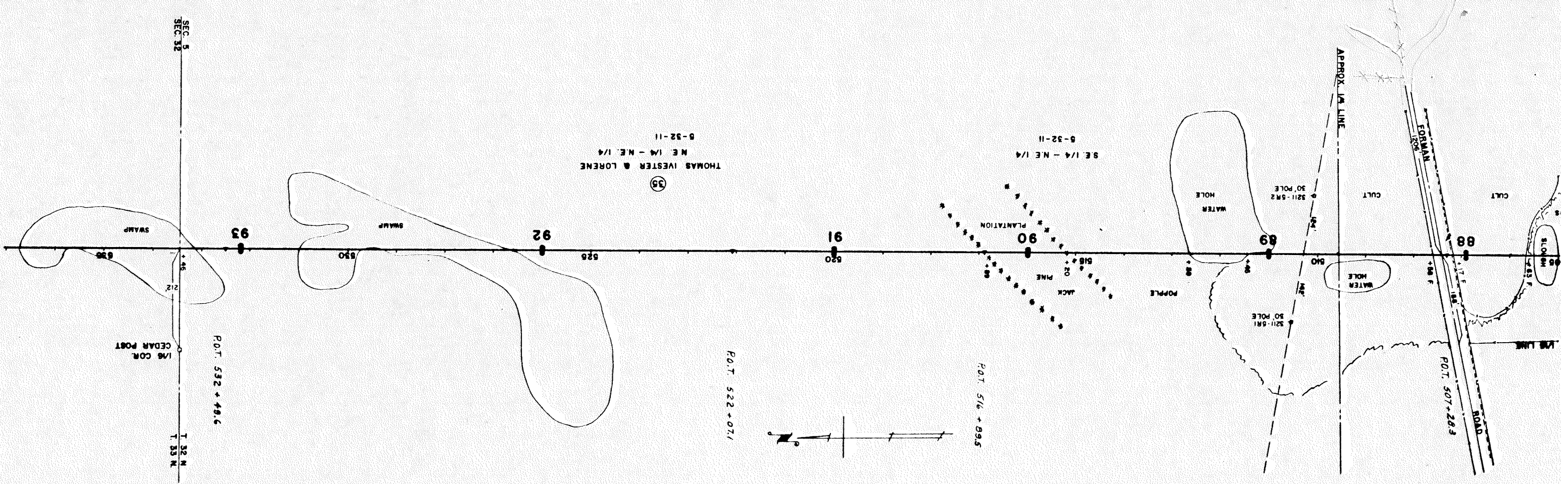
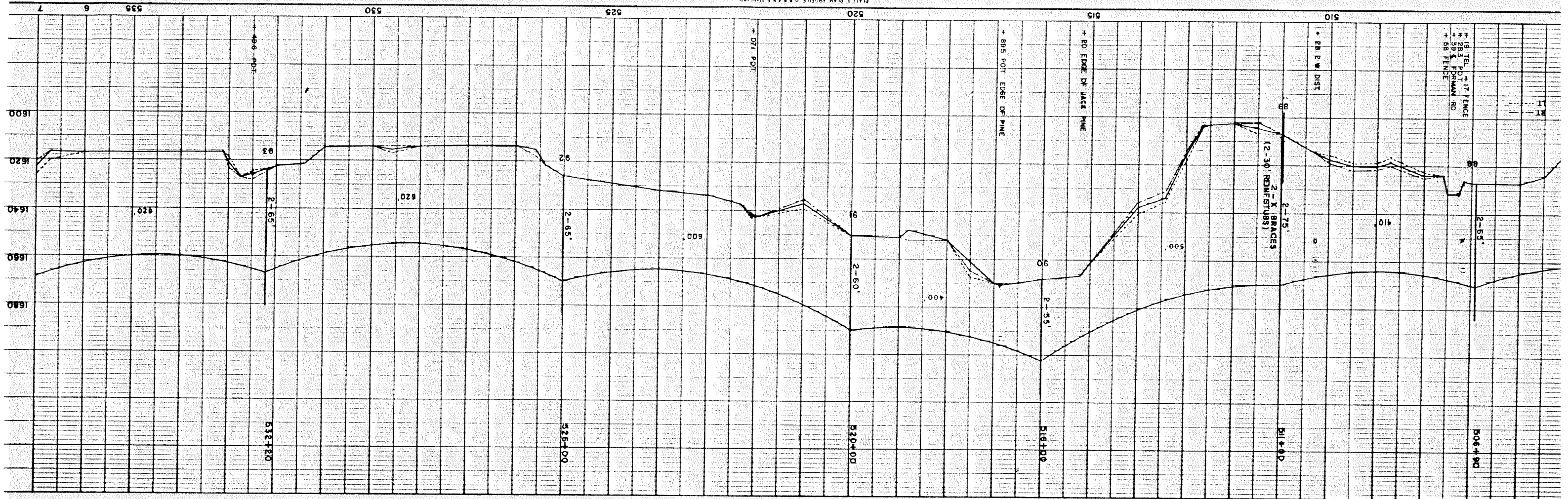


ROUTE MAP—A-53
ANTIGO TO RHINELANDER
SCALE: 4"=1 MILE APPROX



ROUTE MAP — "A-53"
ANTIGO TO RHINELANDER
SCALE 4" = 1 MILE APPROX





THOMAS WESTER & LORENE
 NE 1/4 - NE 1/4
 8-32-11

SE 1/4 - NE 1/4
 8-32-11

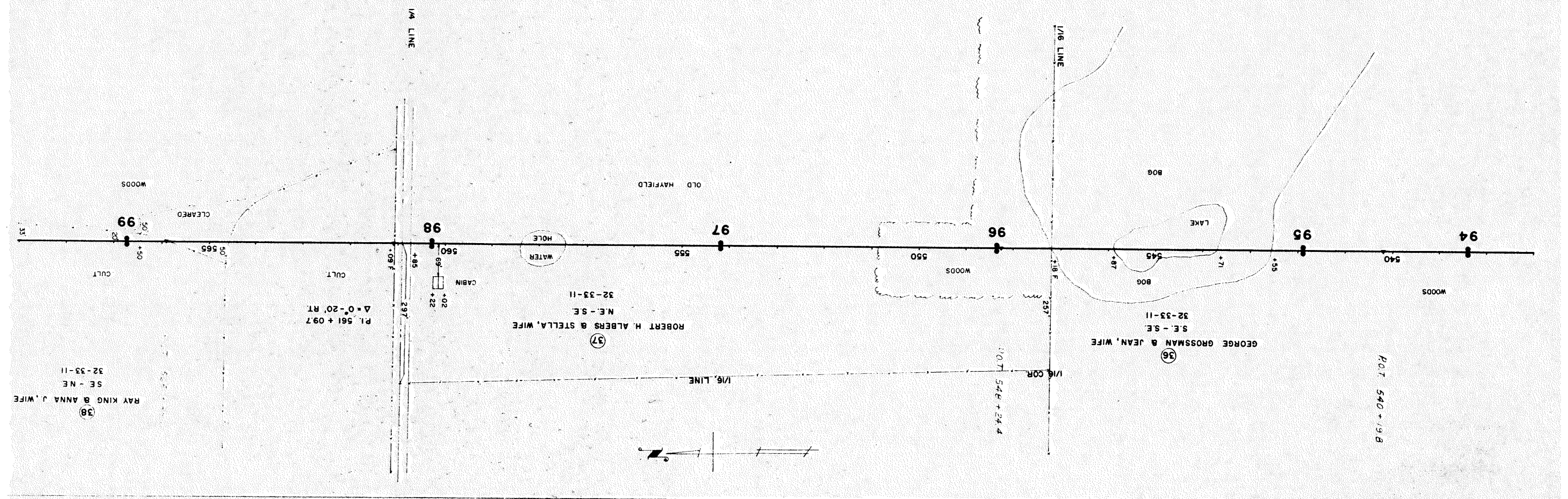
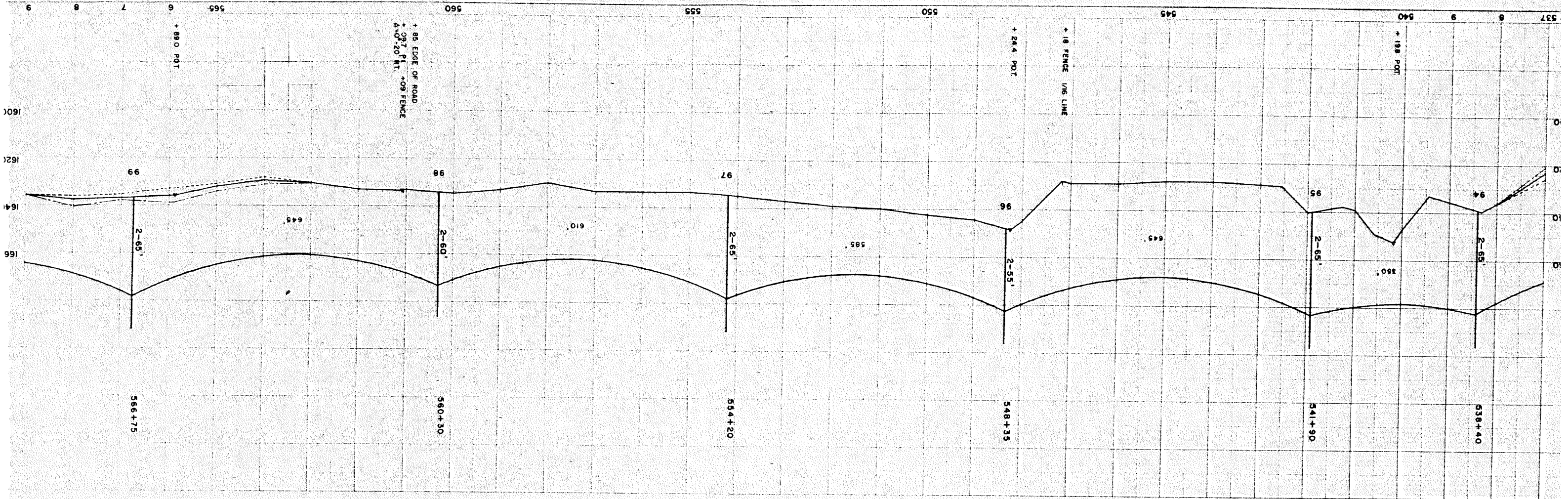
P.O.T. 532 + 48.6

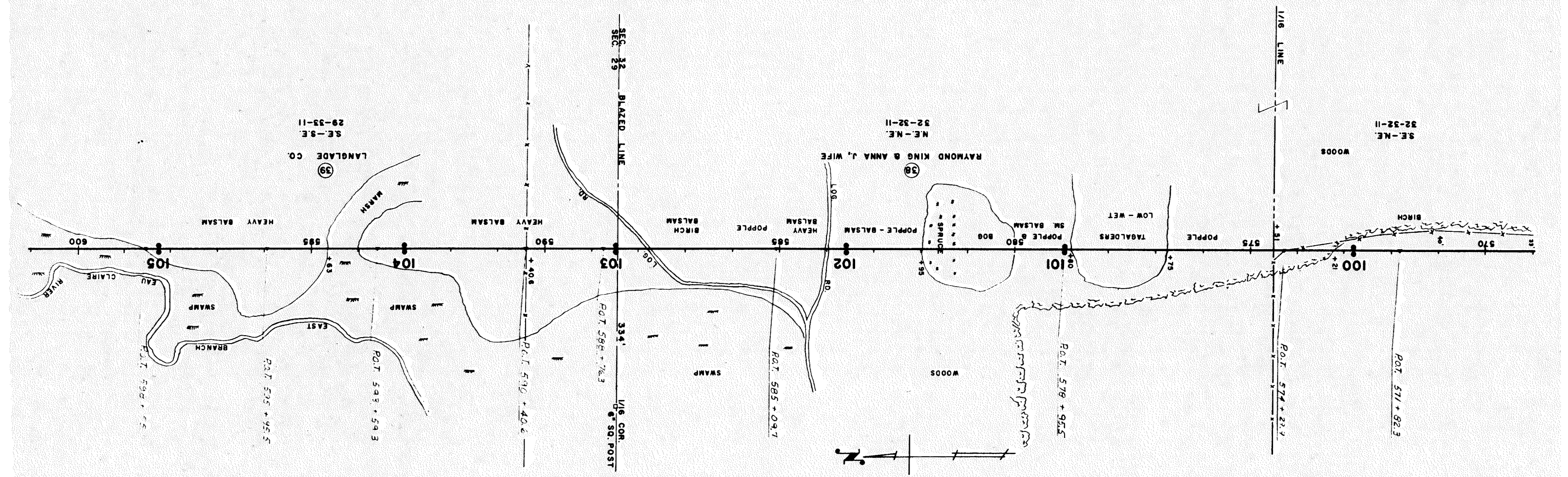
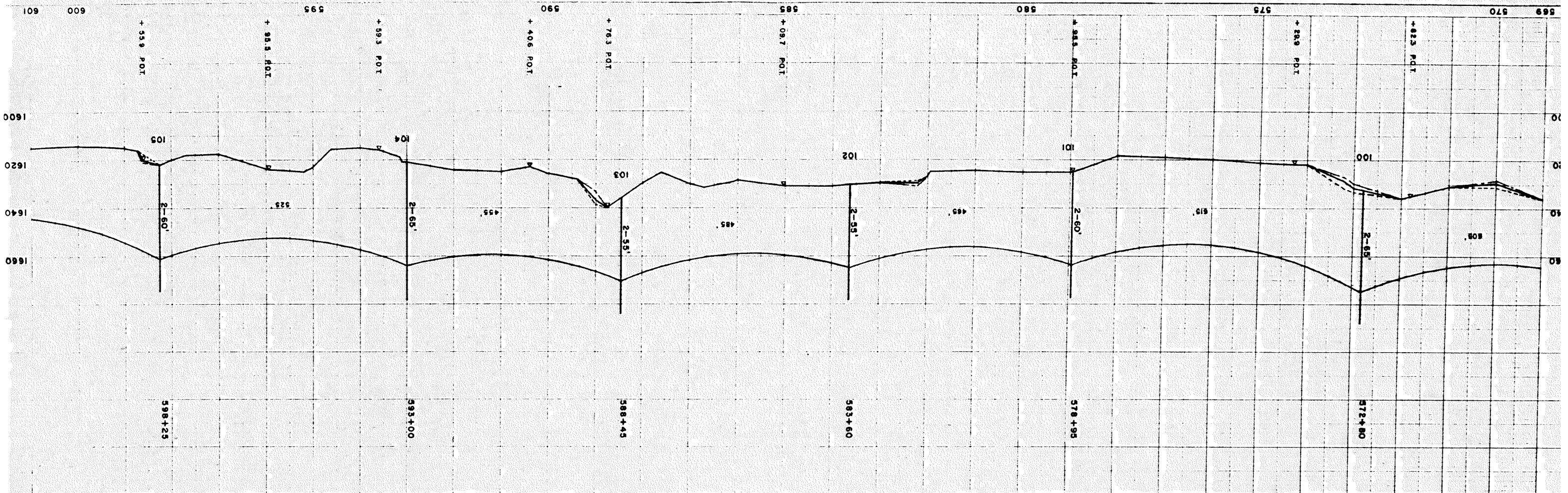
P.O.T. 522 + 07.1

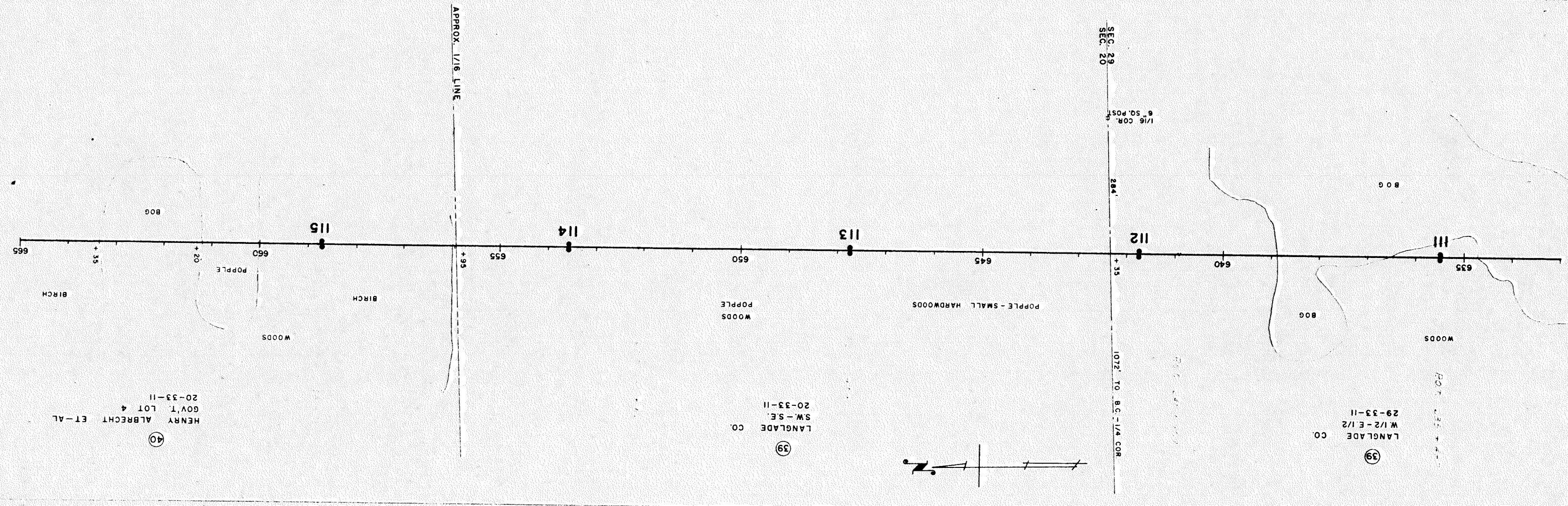
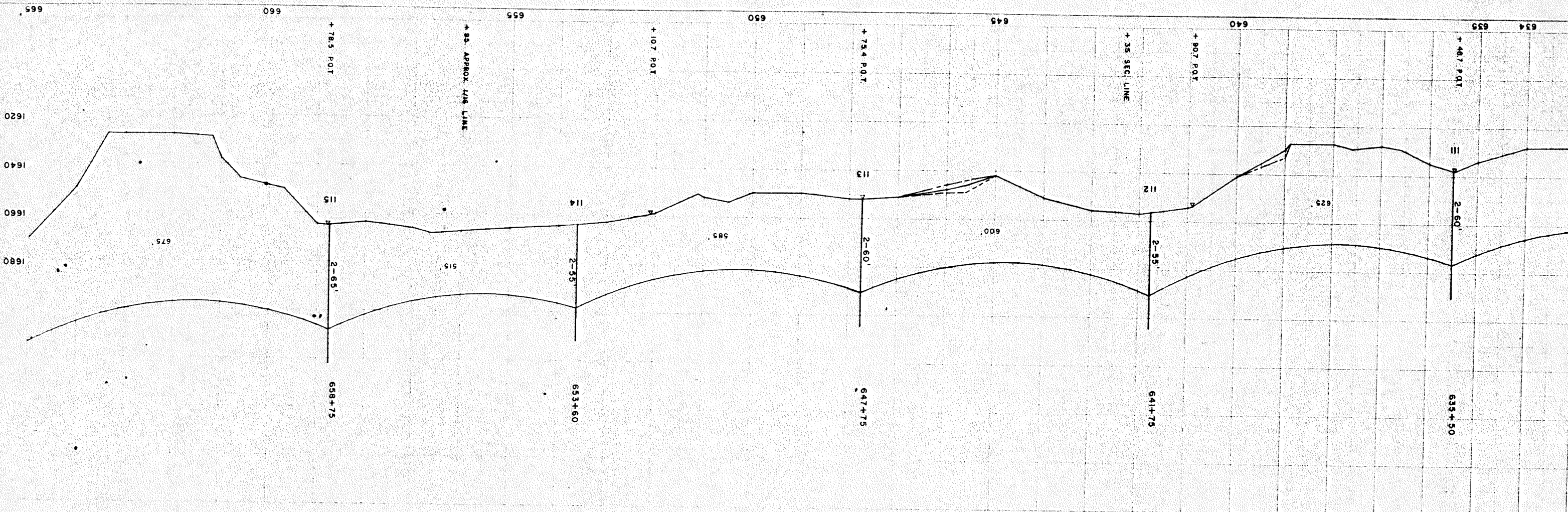
P.O.T. 516 + 89.5

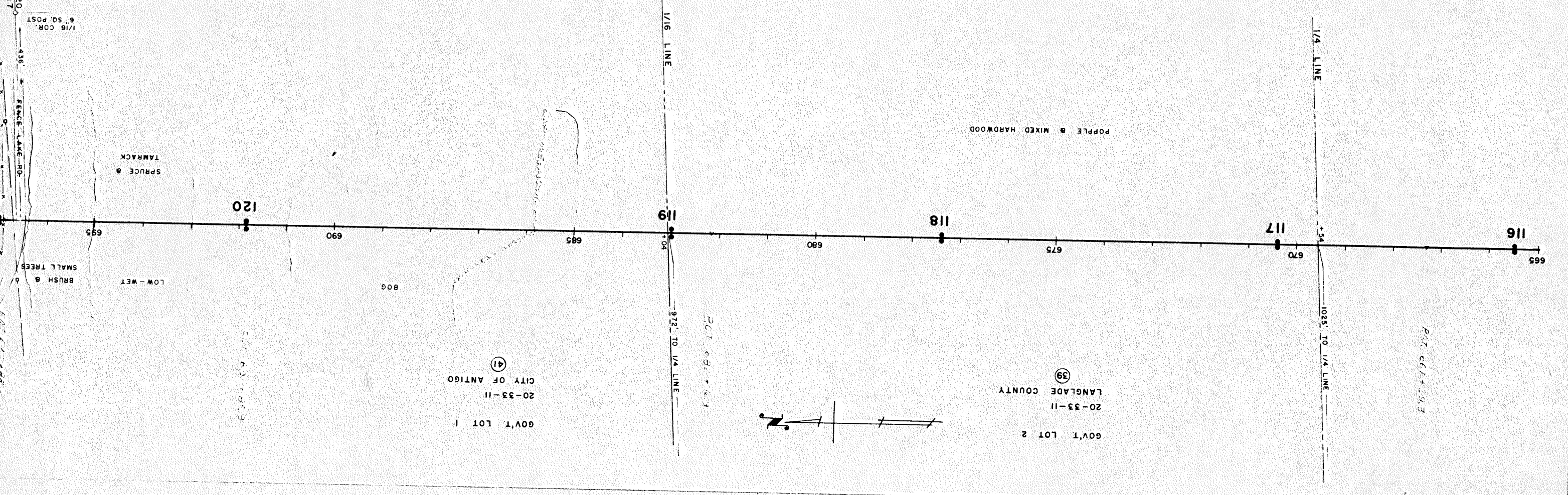
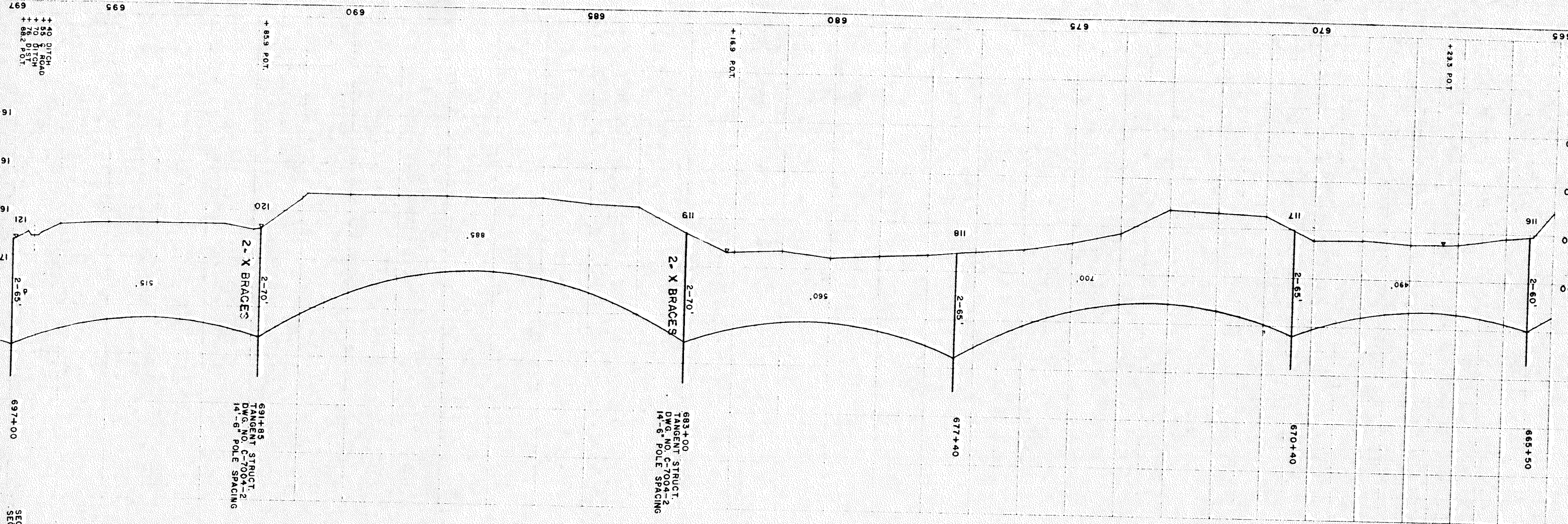
P.O.T. 507 + 26.3

1/8 COR. CEDAR POST









40 DITCH
35 DITCH
26 DITCH
882 POT

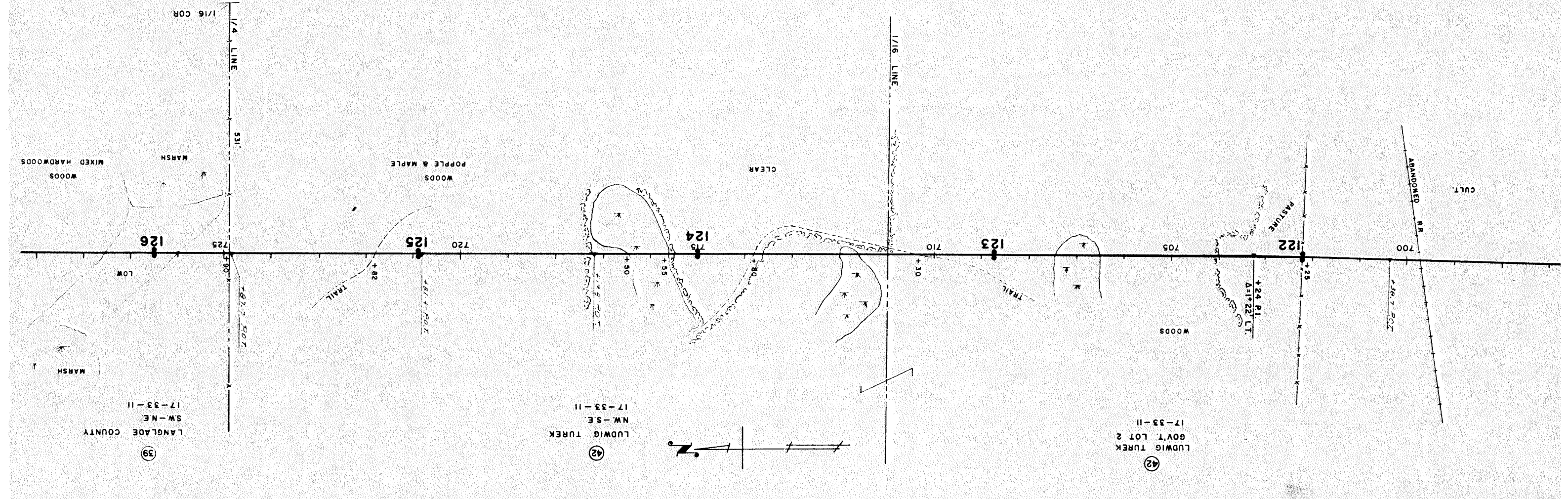
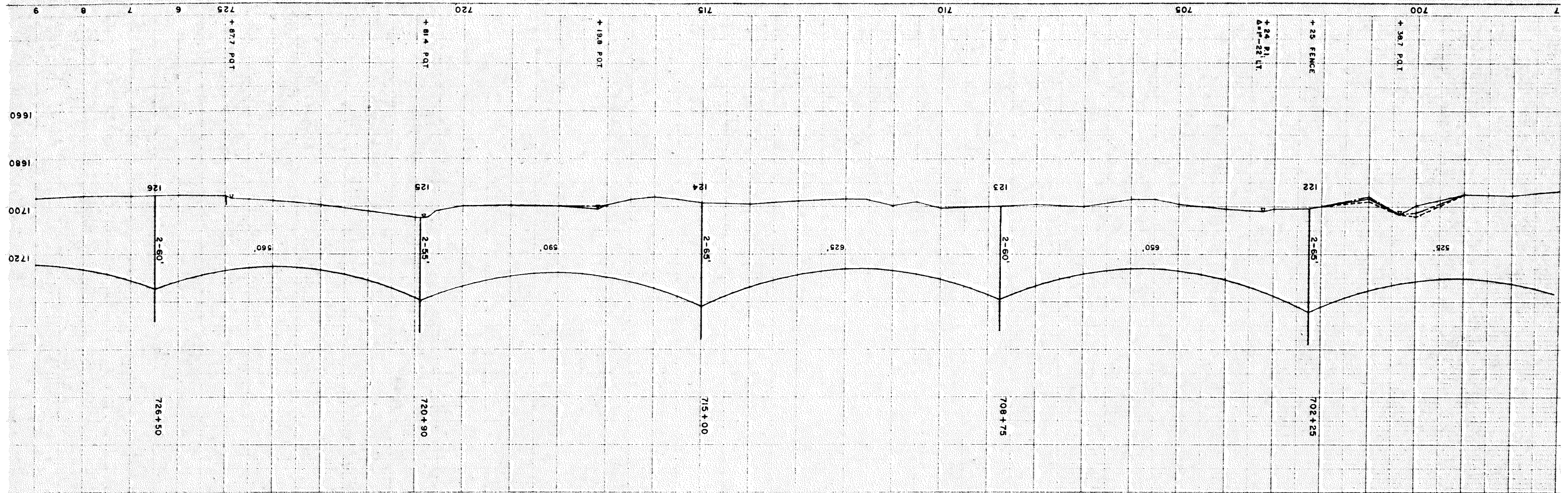
SEC. 20
SEC. 17
1/16 COR.
6" SQ. POST



PAT. 667+203

GOV'T LOT 2
20-33-II
LANGLADE COUNTY
39

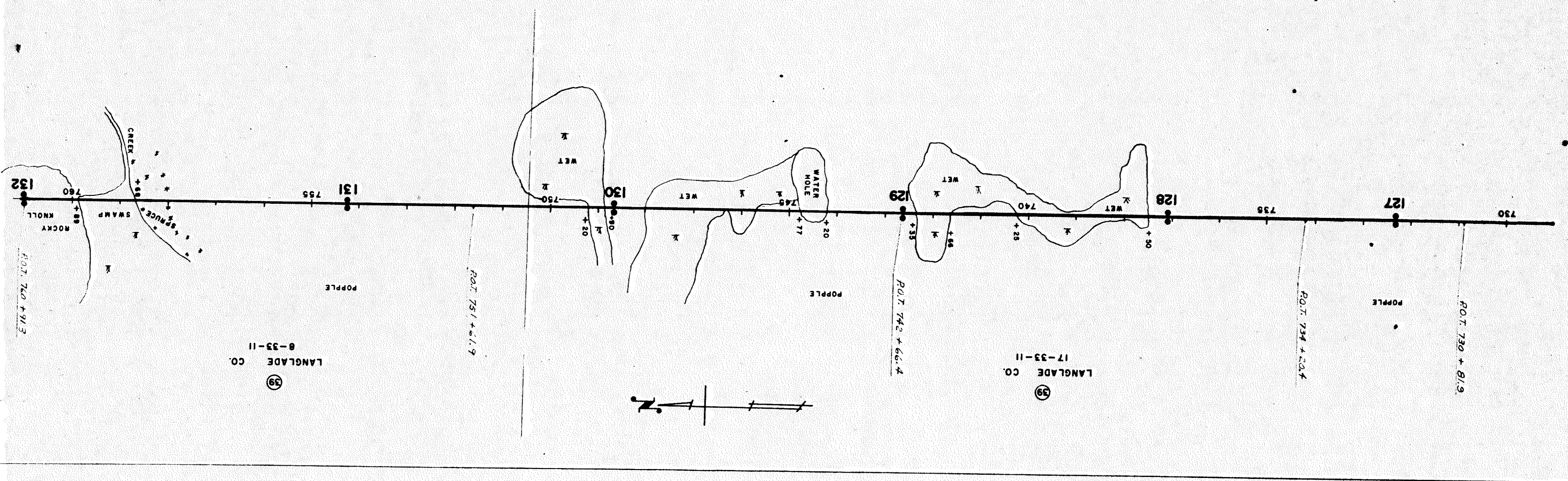
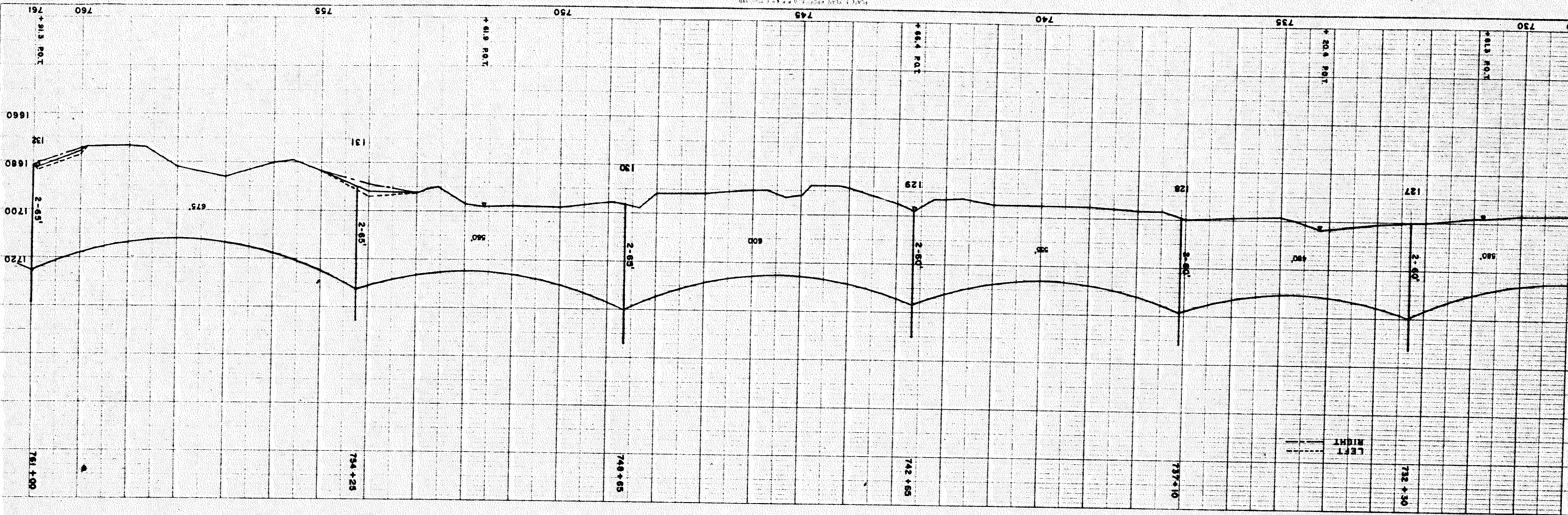
GOV'T LOT 1
20-33-II
CITY OF ANTIGO
41



39
 17-33-11
 SW-NE
 LANGLADE COUNTY

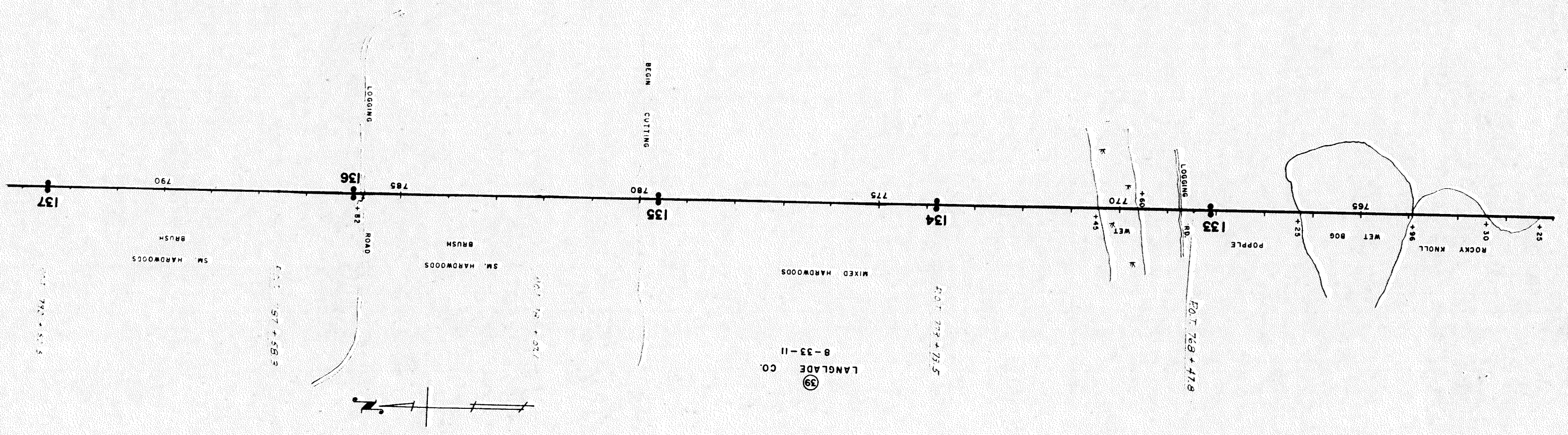
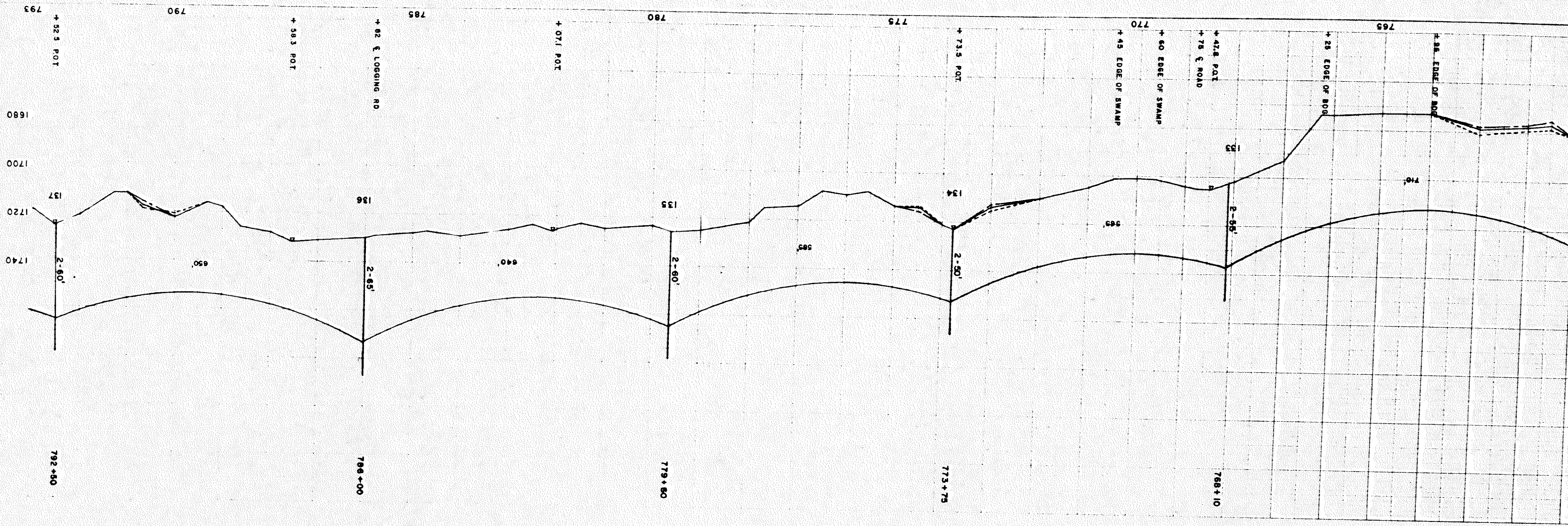
42
 17-33-11
 NW-SE
 LUDWIG TUREK

42
 17-33-11
 GOV'T LOT 2
 LUDWIG TUREK

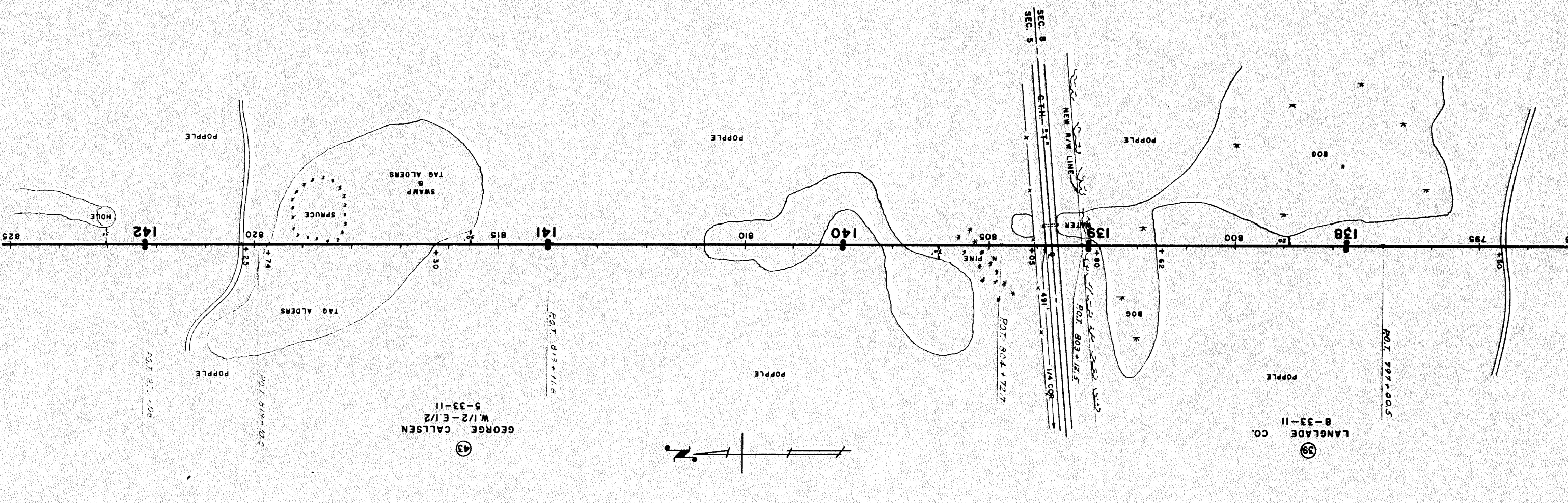
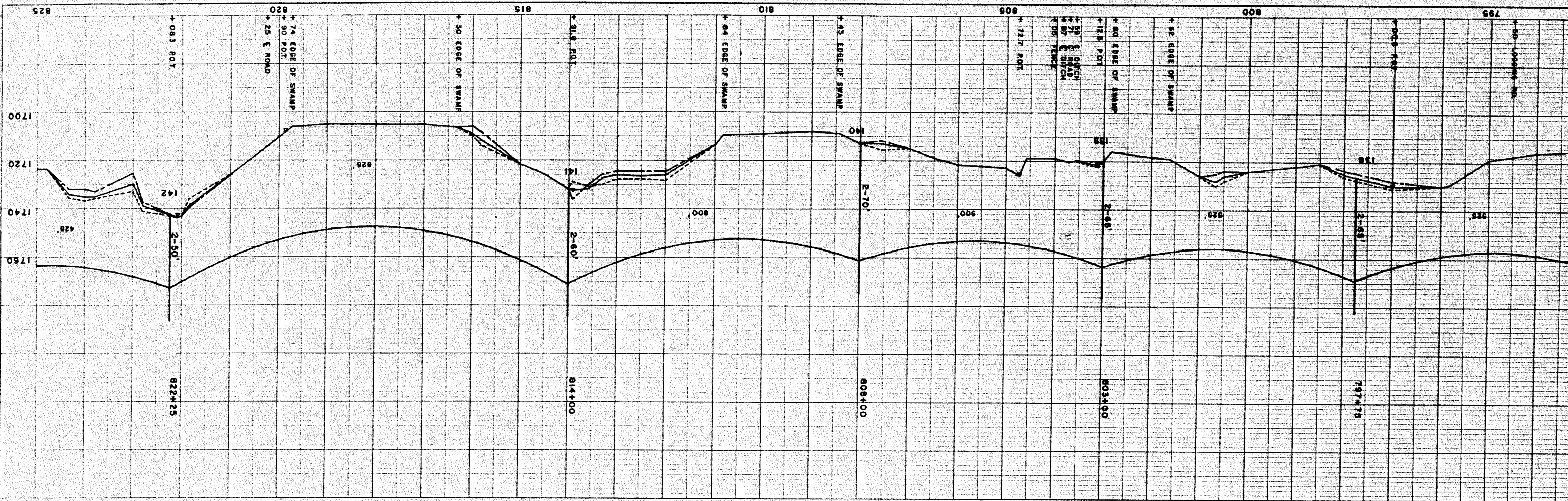


LANGLADE CO.
8-33-11
39

LANGLADE CO.
17-33-11
39



LANGLADE CO.
8-33-11
39



39
 GEORGE CALLEN
 W. 1/2 - E. 1/2
 5-33-11

38
 LANGLADE CO.
 8-33-11



