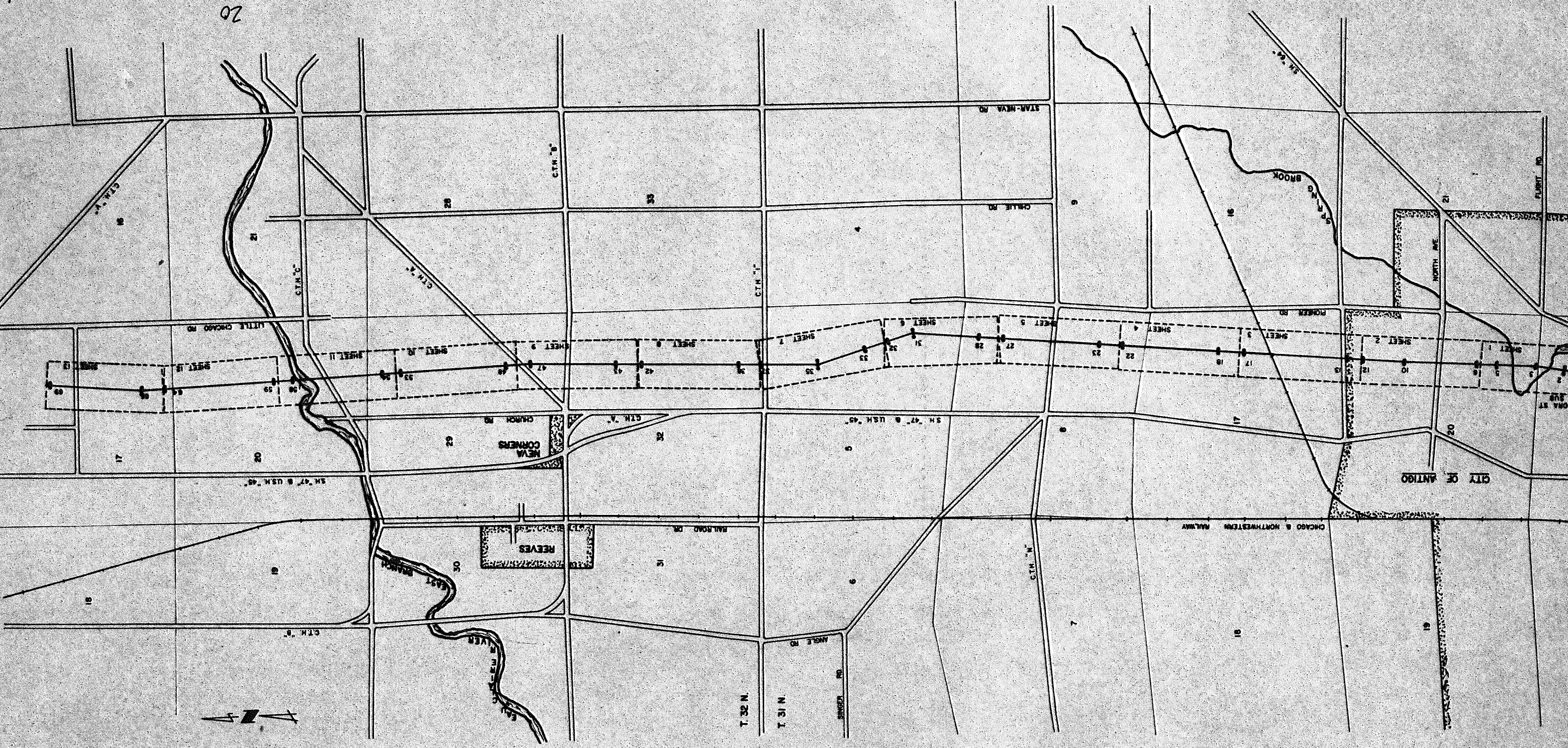


ROUTE MAP - "A-53"
ANTIGO TO RHINELANDER
SCALE: 4" = 1 MILE APPROX

RECORD # 20094
DATE FILED: 6-24-93 BY: S.J.F.
LANGLADE COUNTY SURVEYORS OFFICE

20034 IN 32-11
20035 IN 33-11
20036 IN 34-11
D.T.
11/25/11

20

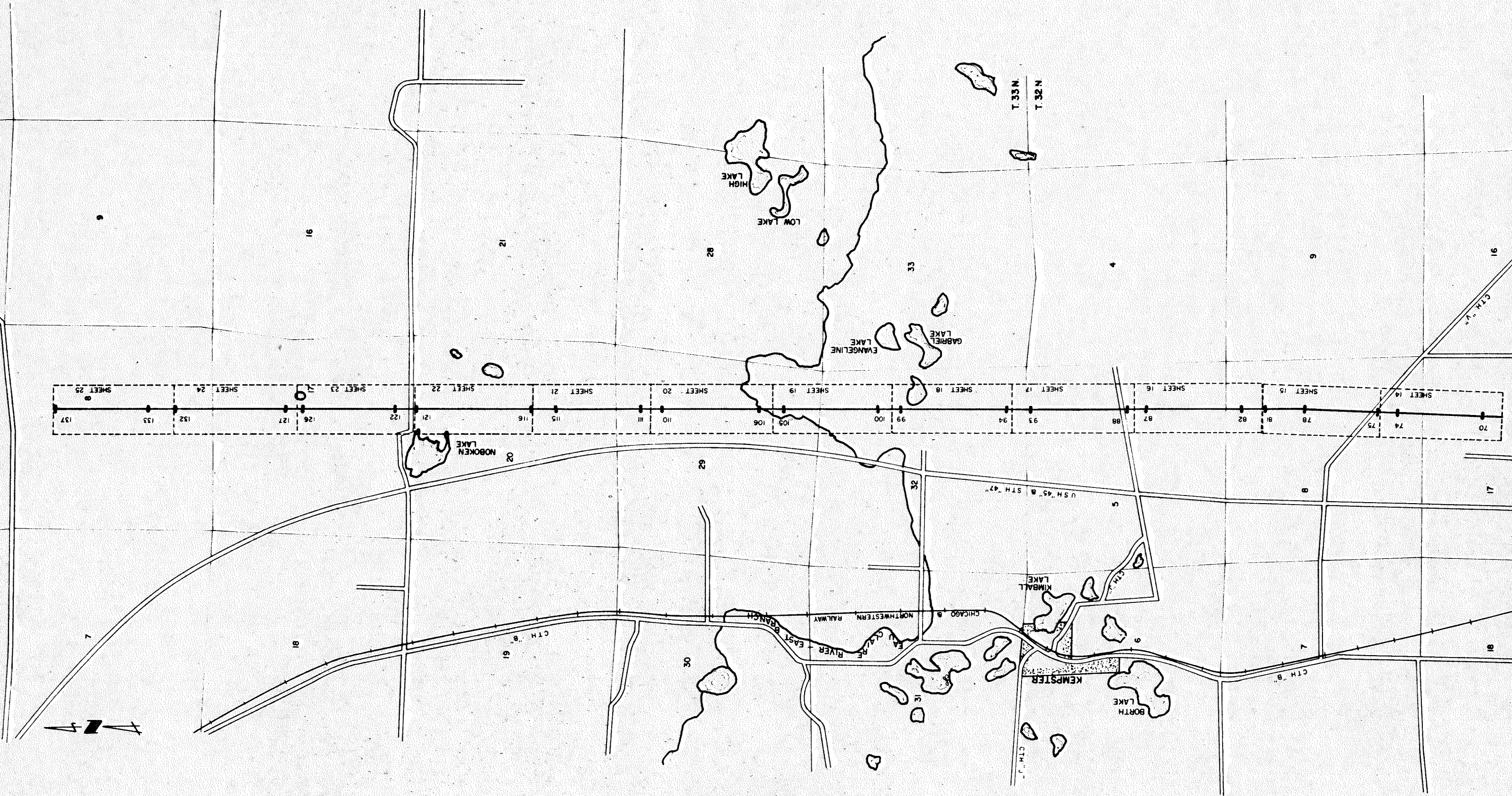


ROUTE MAP—'A-53'
ANTIGO TO RHINELANDER

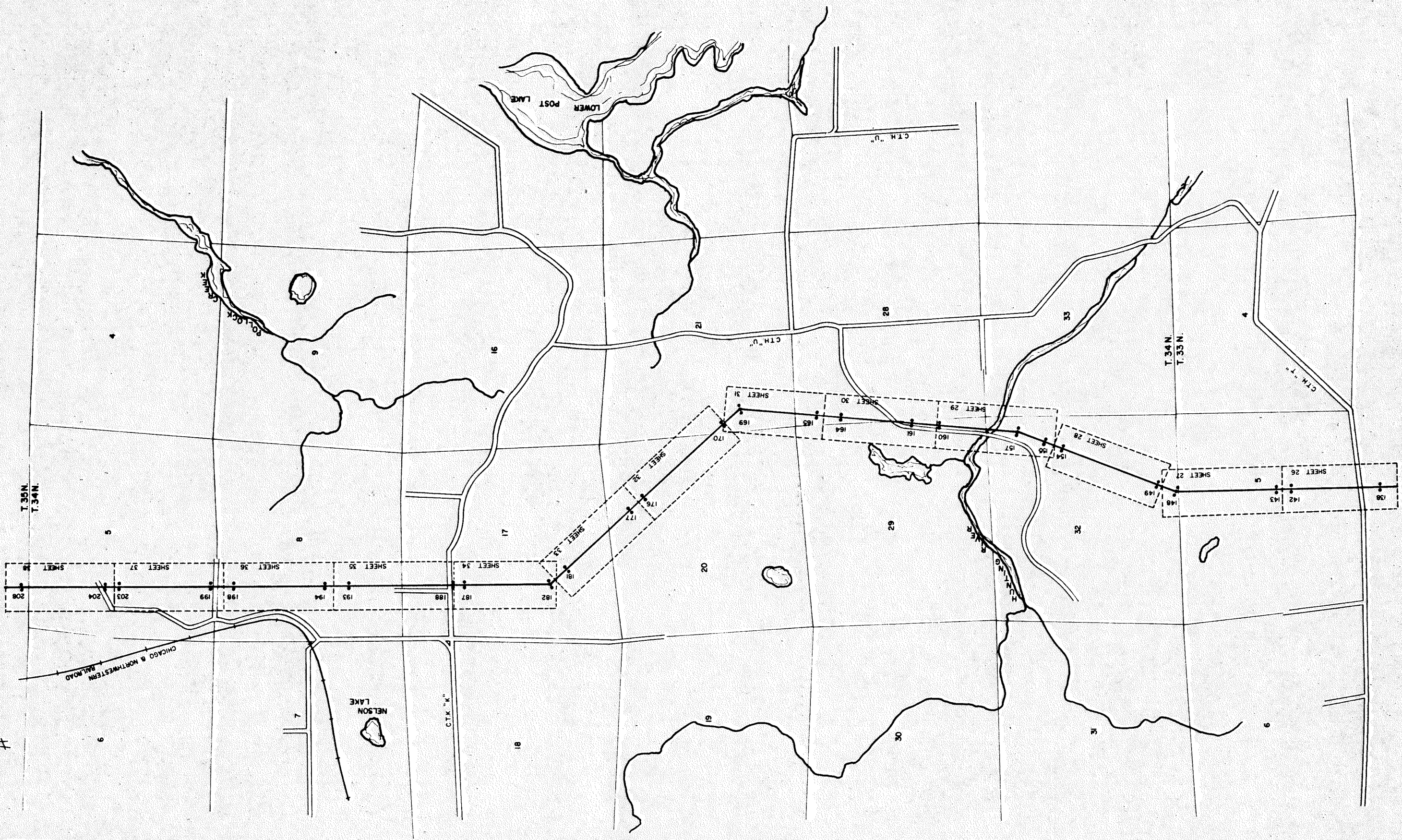
SCALE: 4 = 1 MILE APPROX

SHEET 2 OF 6

C.10.



ROUTE MAP — "A-53"
ANTIGO TO RHINELANDER
SCALE 4.1 MILE APPROX



T. 35 N.
T. 34 N.

T. 34 N.
T. 35 N.

CHICAGO & NORTHWESTERN
RAILROAD

NELSON
LAKE

LOWER
POST
LAKE

CRANK
ROCK

SHEET 38
SHEET 37
SHEET 36
SHEET 35
SHEET 34
SHEET 33
SHEET 32
SHEET 31

SHEET 26
SHEET 27
SHEET 28
SHEET 29
SHEET 30
SHEET 31

CTK "K"

CTH "U"

CTH "U"

CTH "T"

4

5

16

21

28

33

4

5

8

17

20

29

35

4

9

7

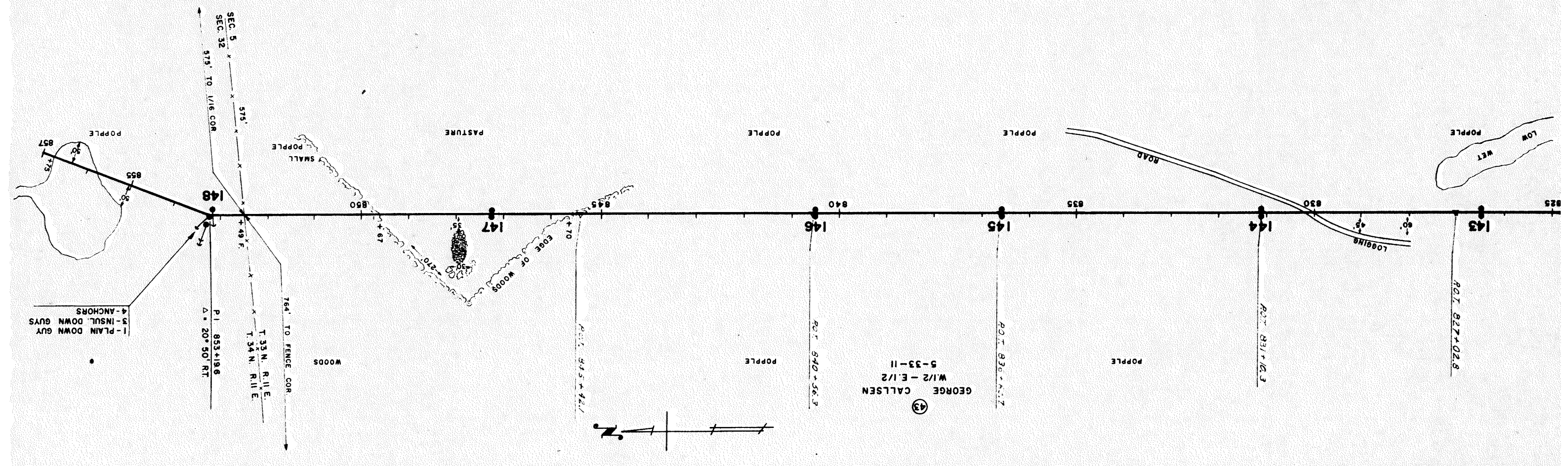
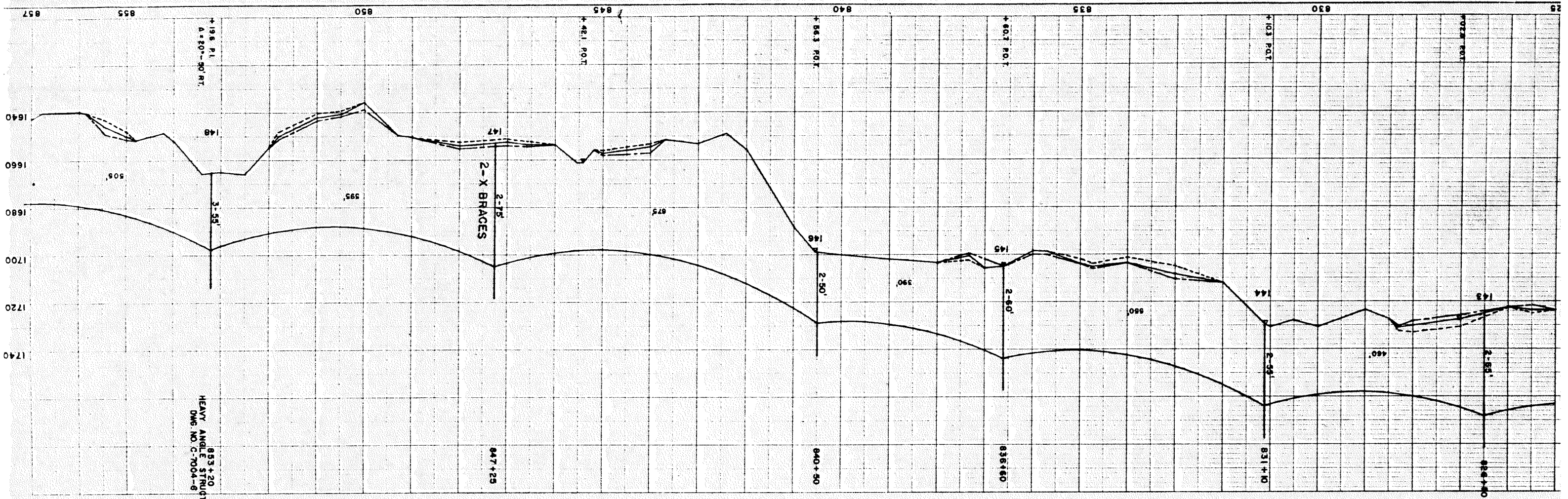
18

19

30

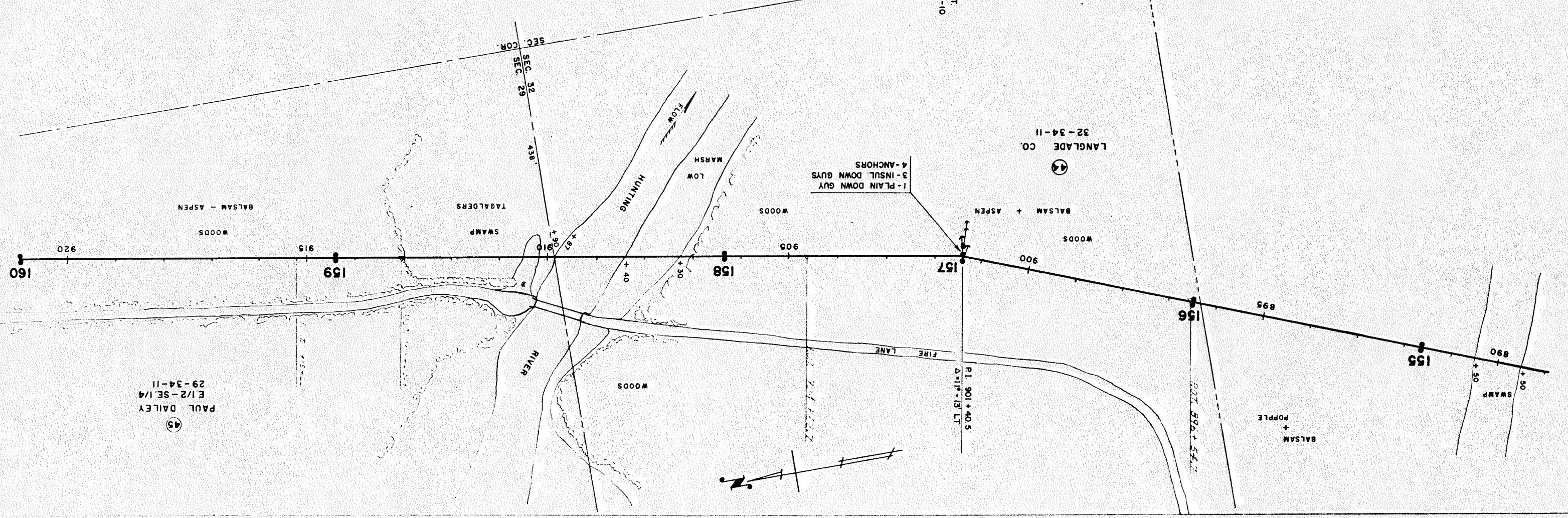
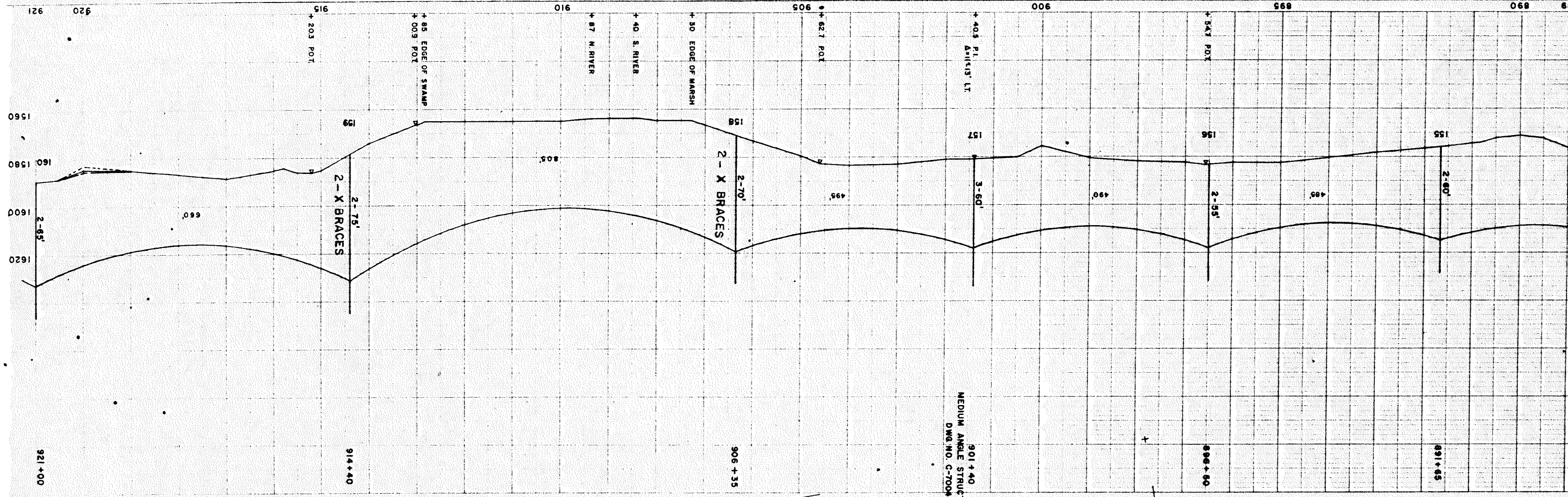
34

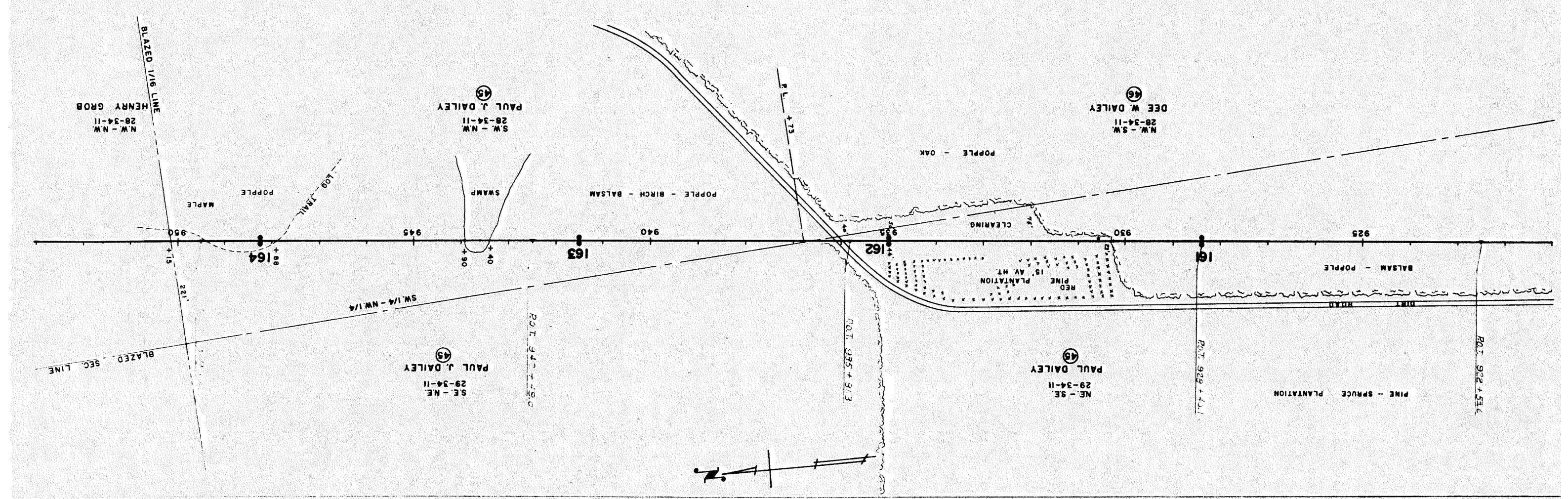
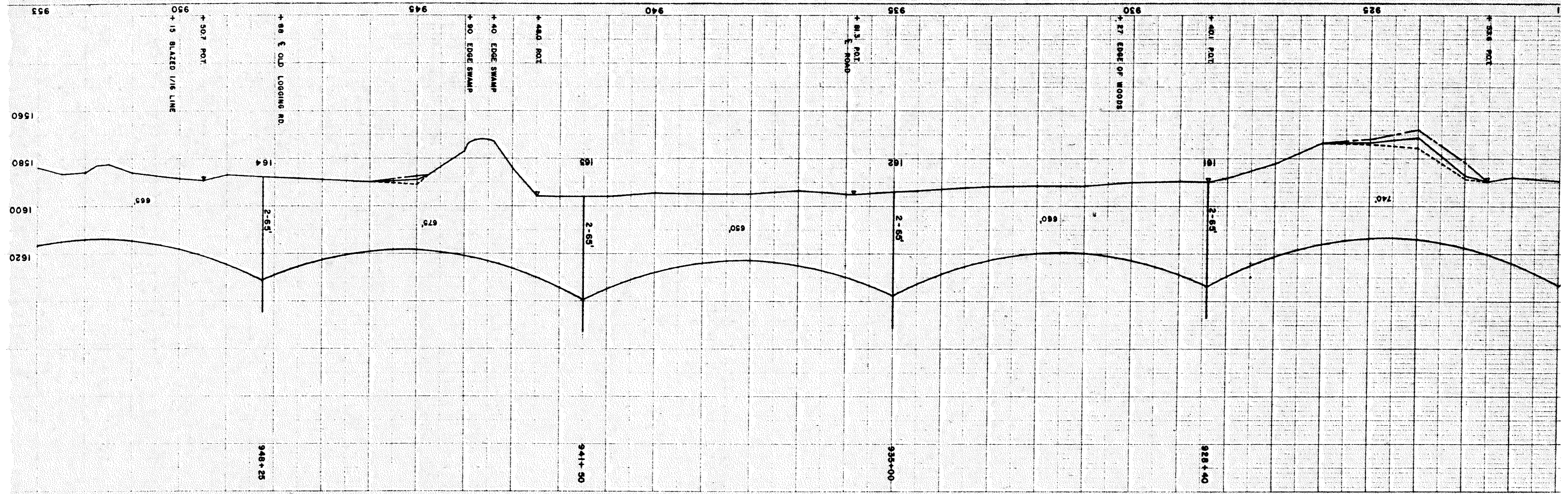
9

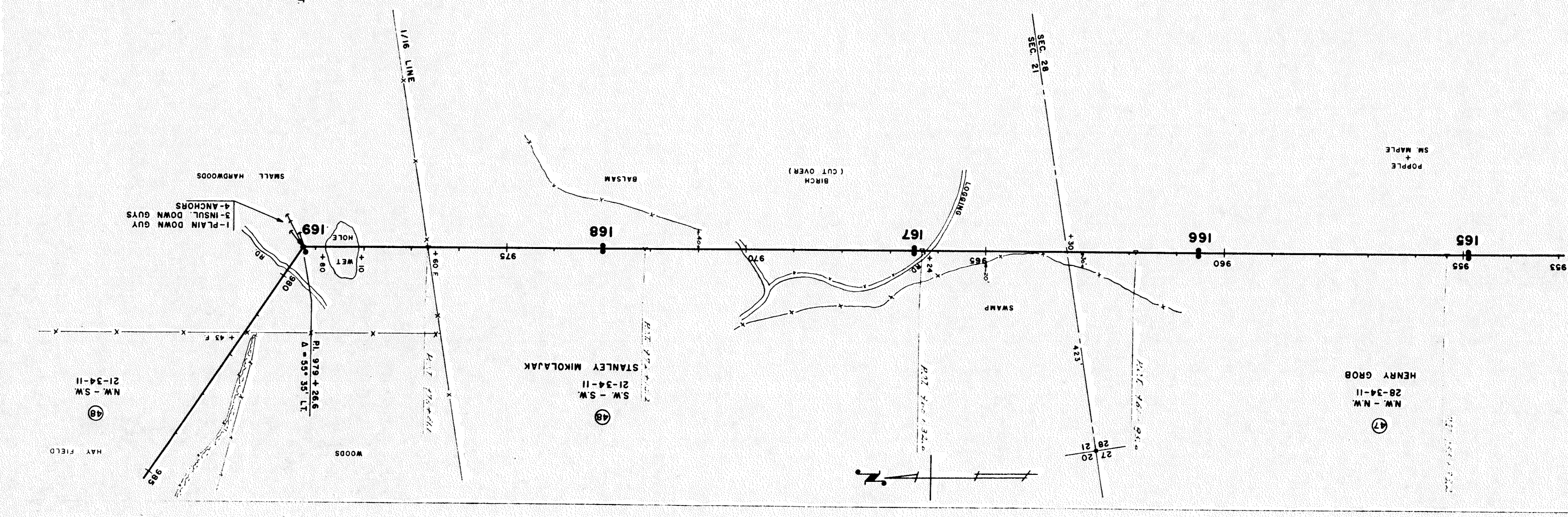
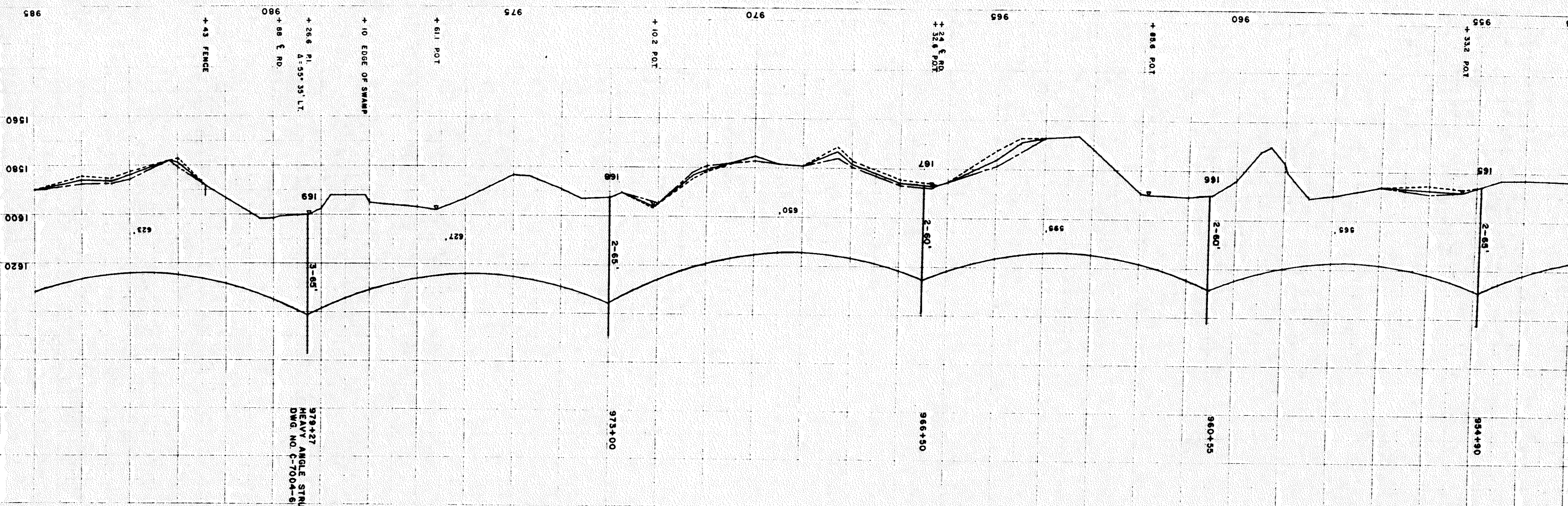


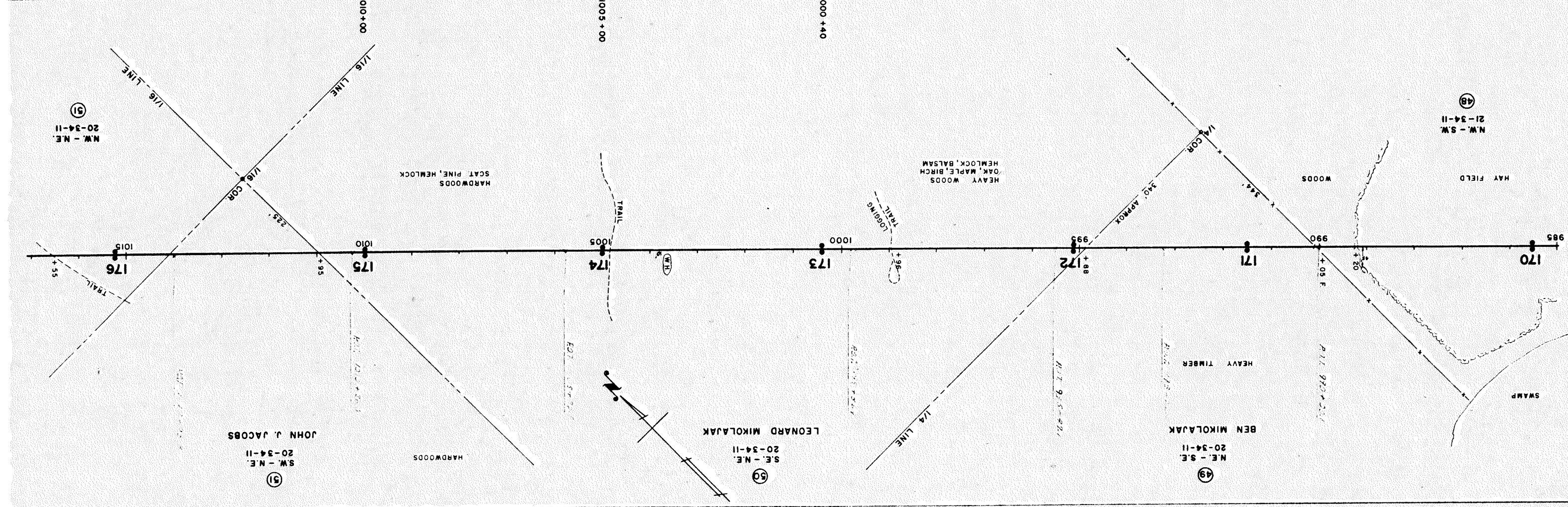
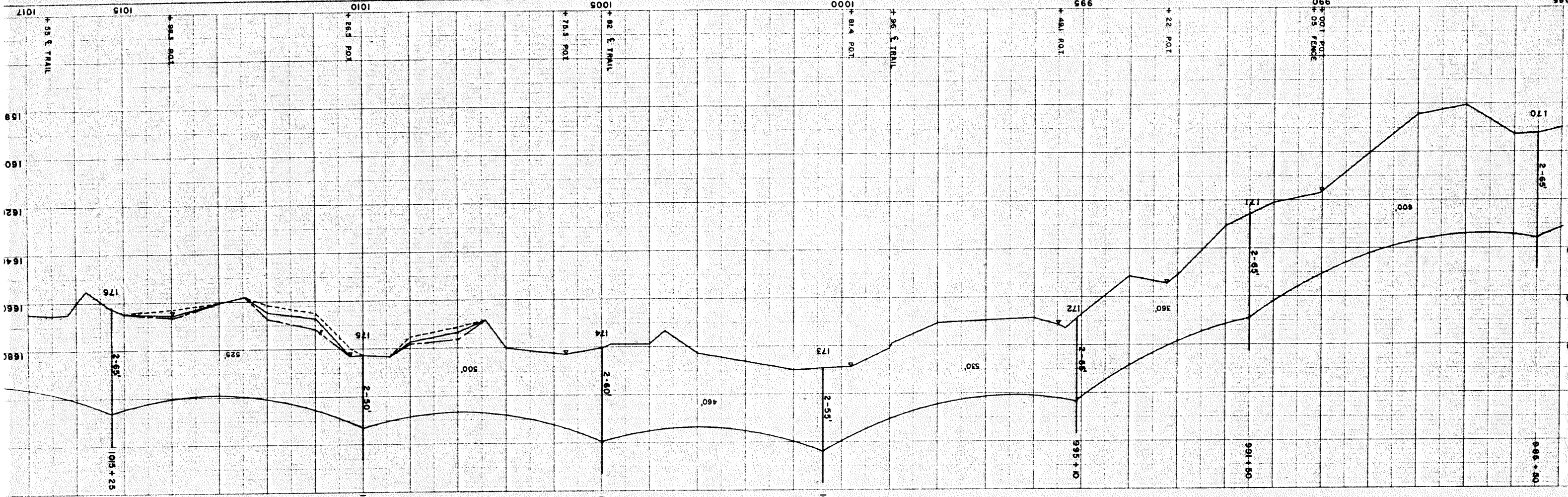
- 1 - PLAIN DOWN GUY
- 3 - INSUL. DOWN GUYS
- 4 - ANCHORS

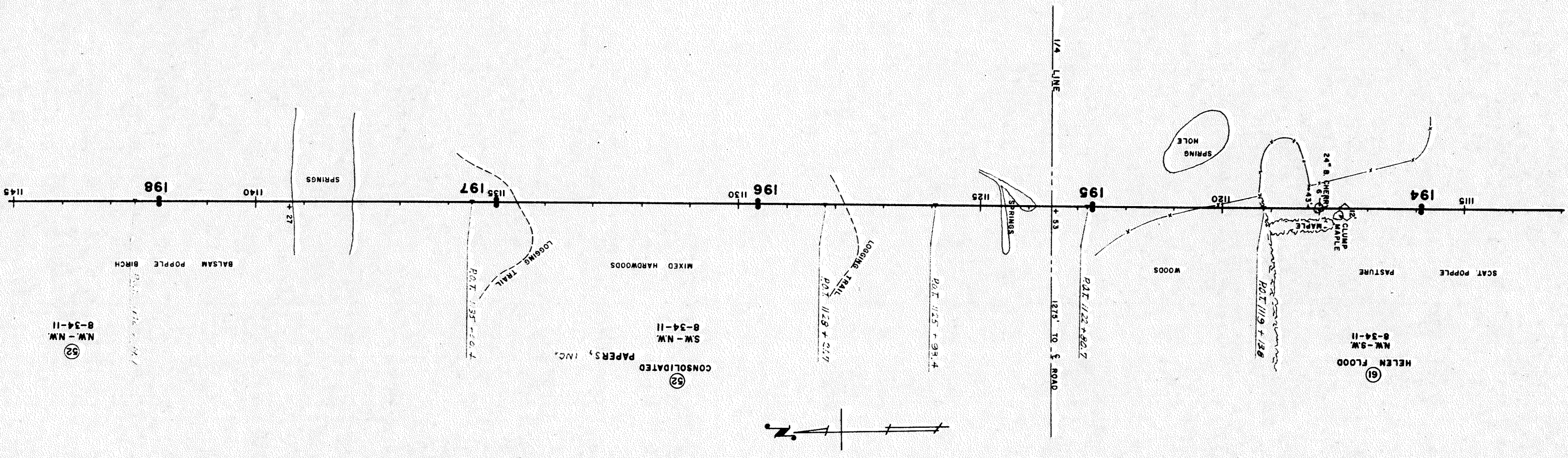
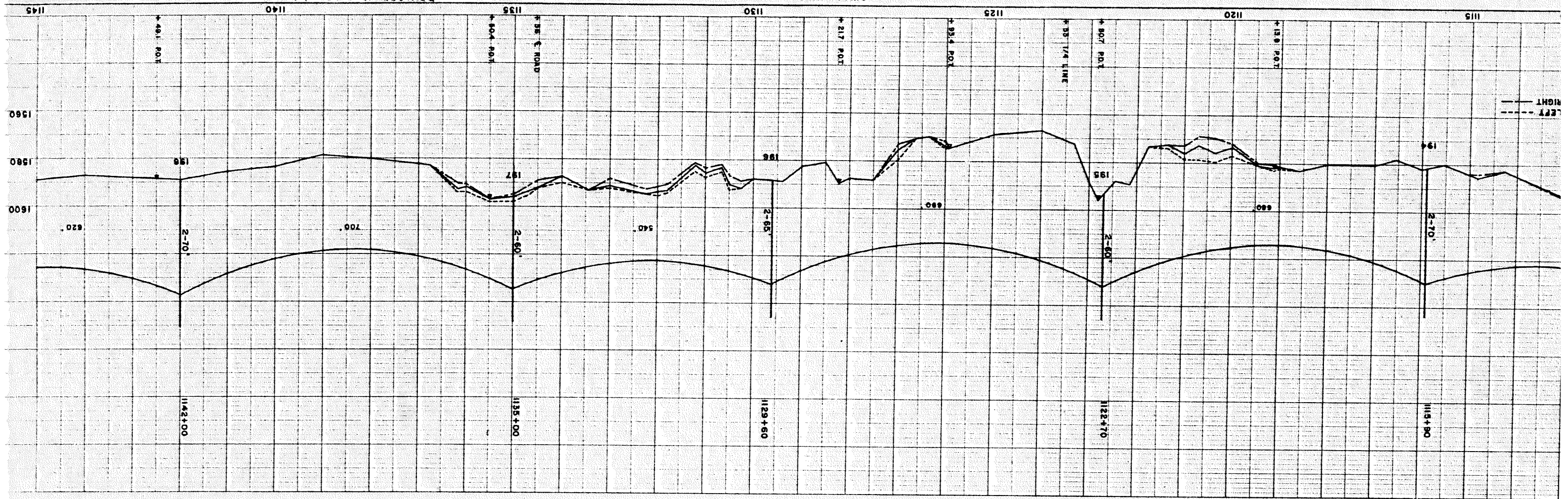
GEORGE CALLESEN
W/2 - E. 1/2
5-33-11

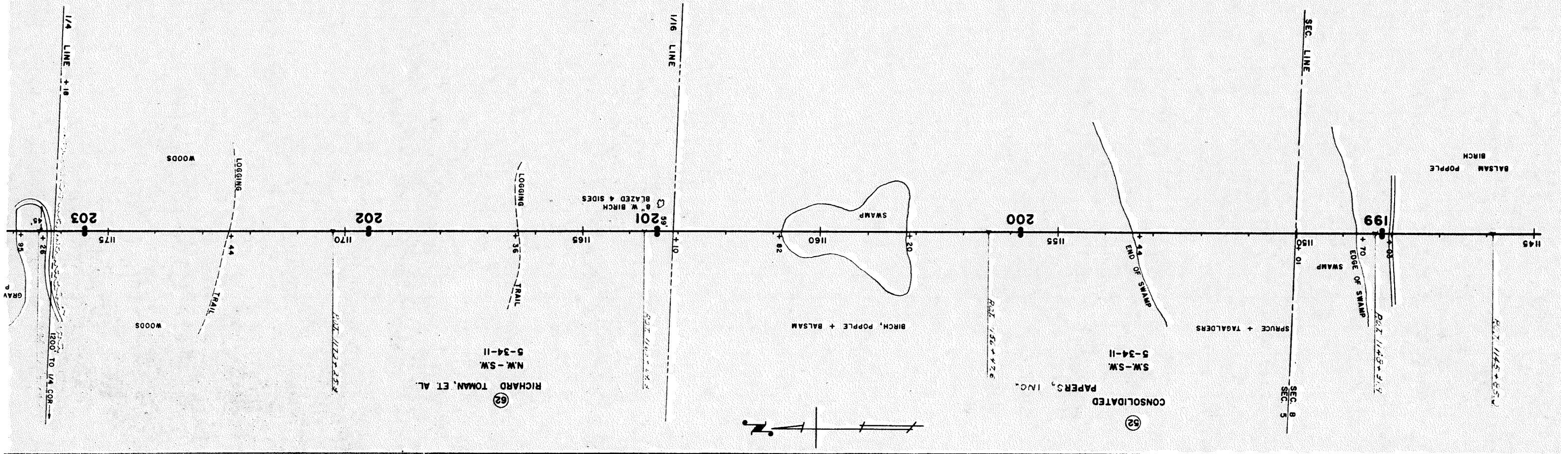
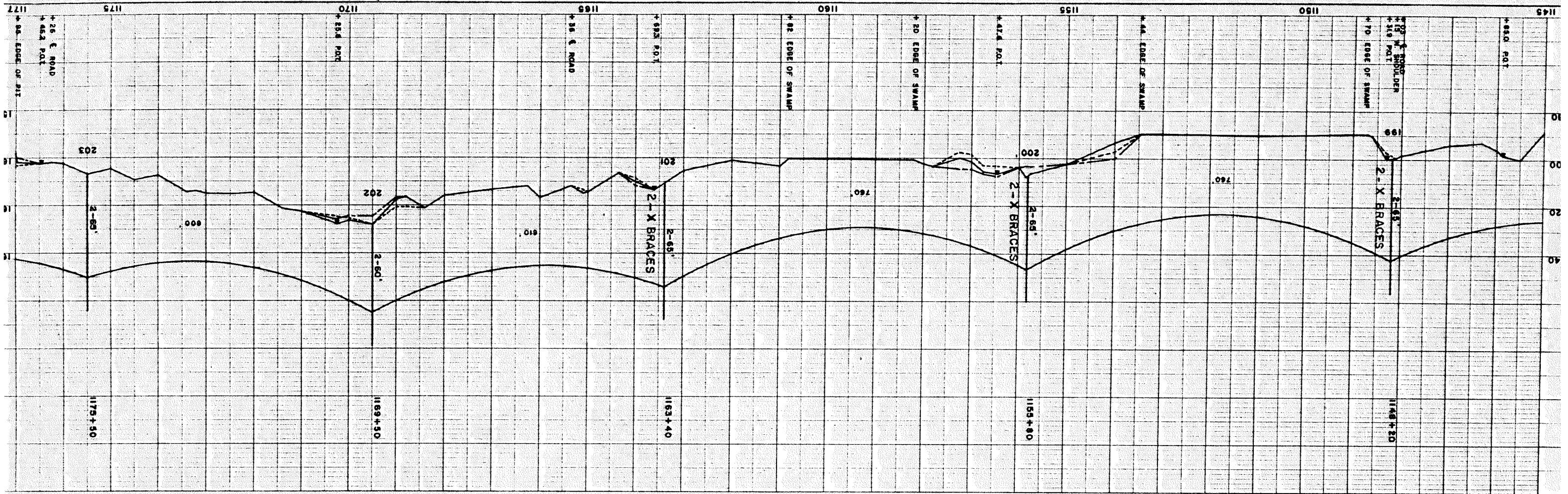


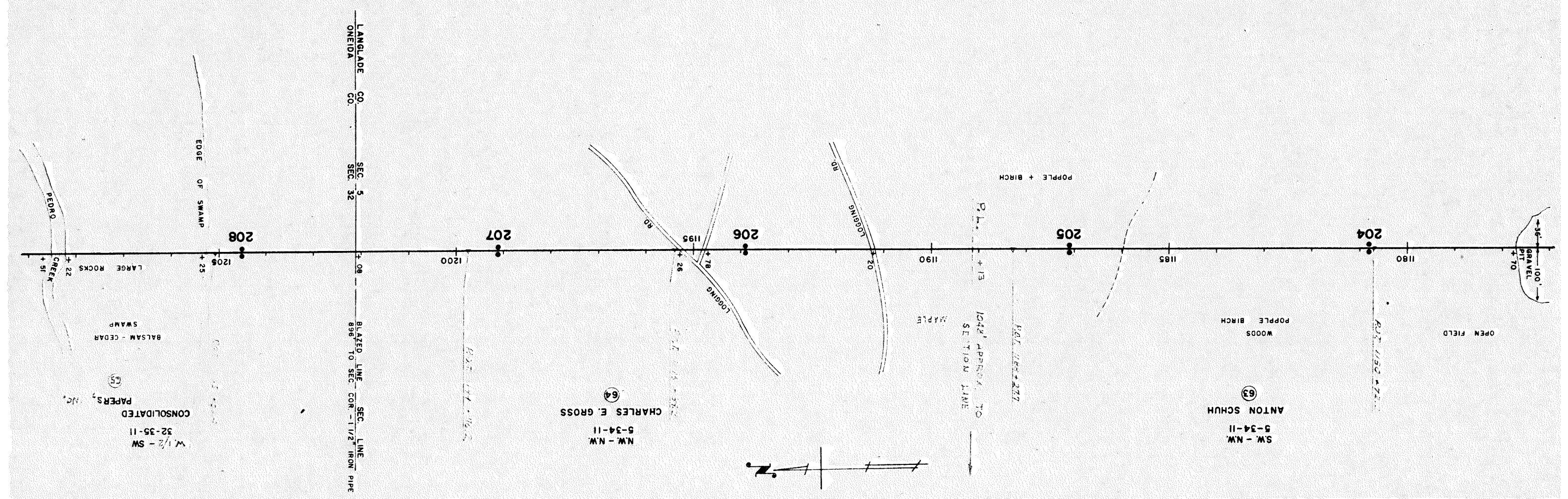
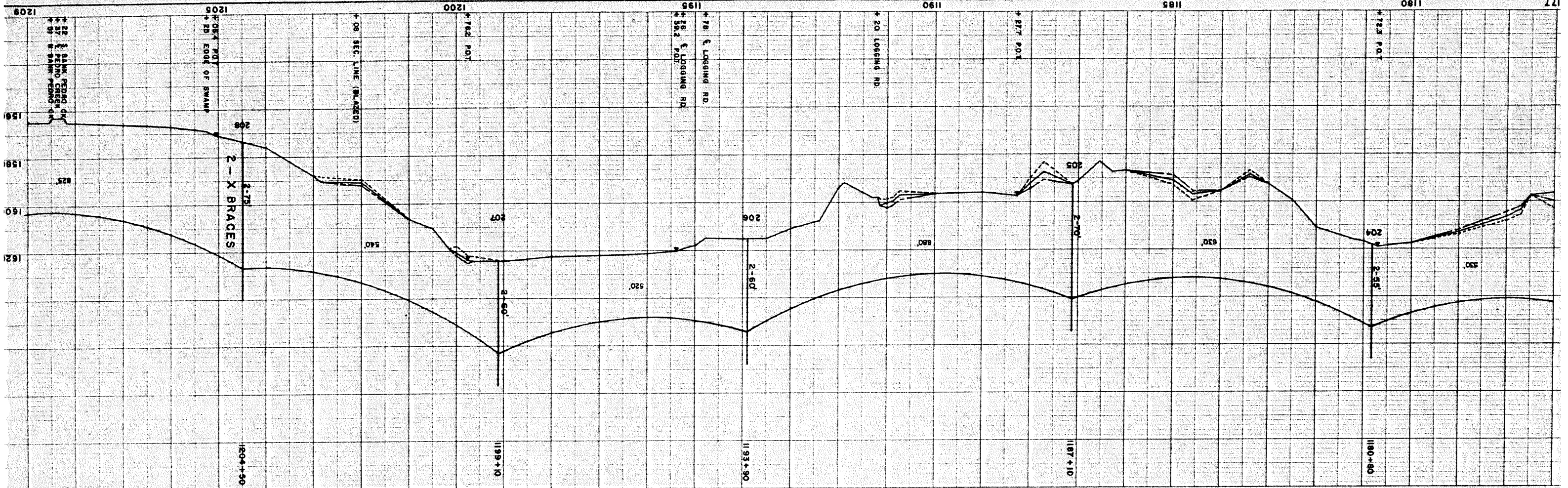












W 1/2 - SW
32-35-11
CONSOLIDATED
PAPERS, INC.

64
NW - NW
5-34-11
CHARLES E. GROSS

63
SW - NW
5-34-11
ANTON SCHUH



+06 E. ROAD
+485 P.O.T

+80 E. ROAD
1535

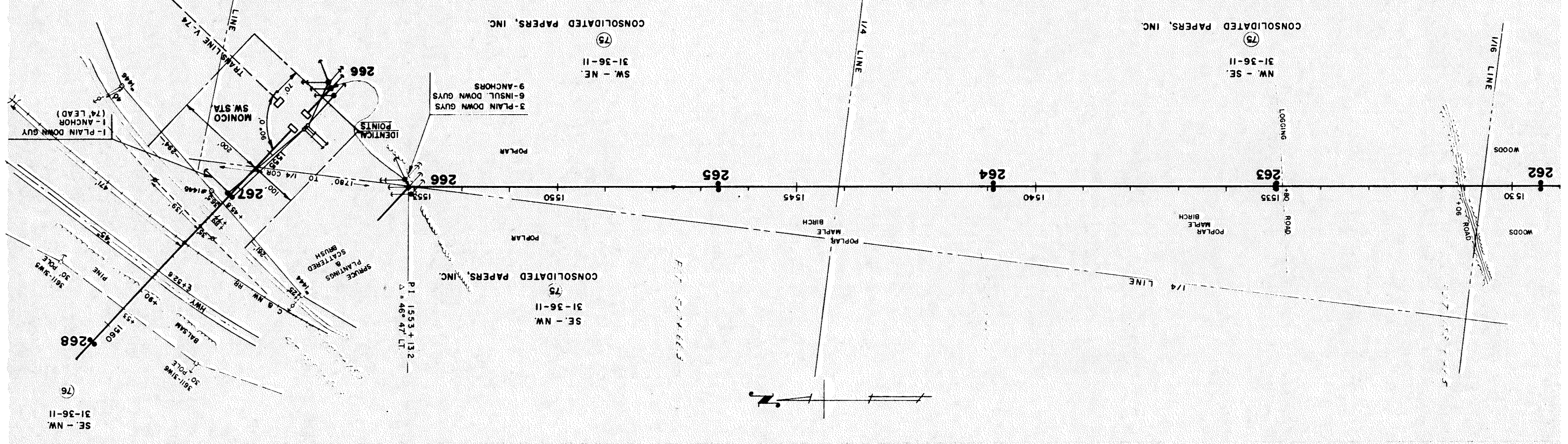
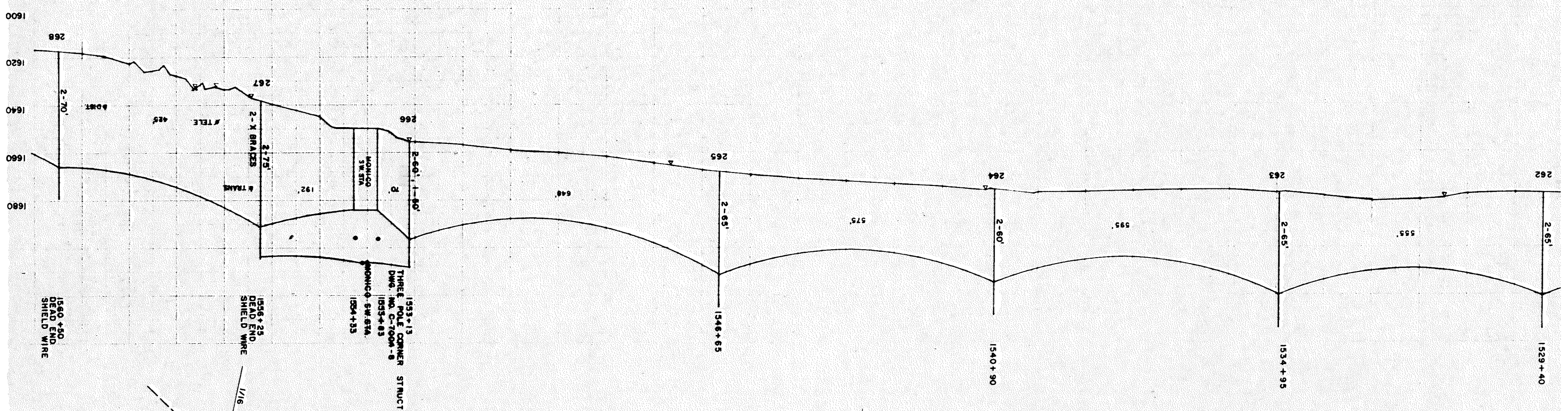
1540
+117 P.O.T

1550
+66.3 P.O.T

1555
REVISSED 7-12-68 CJO

LINE A-53

1560
+53 2 WIRE DIST
1561



SE - NW 31-36-11

(76)

301-316
30 POLE

301-316
30 POLE

301-316
30 POLE

301-316
30 POLE

301-316
30 POLE

301-316
30 POLE

301-316
30 POLE

301-316
30 POLE

301-316
30 POLE

301-316
30 POLE

301-316
30 POLE

301-316
30 POLE

301-316
30 POLE

301-316
30 POLE

301-316
30 POLE

301-316
30 POLE

301-316
30 POLE

301-316
30 POLE

301-316
30 POLE