

**Index of Sheets**

Sheet No. 1	Title
Sheet No. 2-2.1	Typical Cross Sections
Sheet No. 3	Estimate of Quantities
Sheet No. 3	Miscellaneous Quantities
Sheet No. 4-4.3	Right of Way Plat
Sheet No. 5-5.2	Plan and Profile STA. 92+00 TO STA. 176+19
Sheet No. 6-6.3	Standard Details
Sheet No. —	Structure Plans
Sheet No. —	Computer Earthwork Data
Sheet No. 8-8.2.1	Cross Sections

TOTAL SHEETS = 37



STATE OF WIS  
**DEPARTMENT OF TRANSPORTATION**  
**DIVISION OF HIGHWAYS**

PLAN AND PROFILE OF PROPOSED

**PHLOX - C.T.H. "AA" ROAD**  
 C.T.H. "S"  
 LANGLADE COUNTY

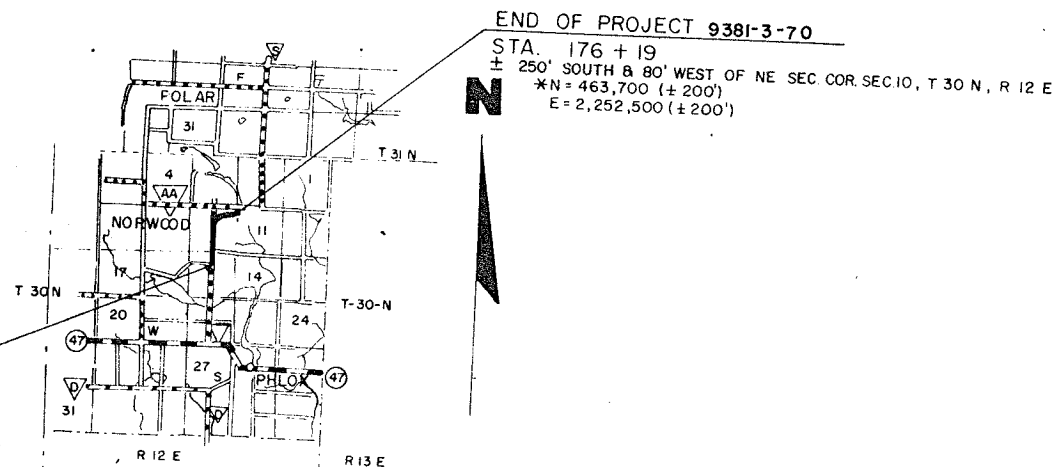
STATE PROJECT NUMBER  
**9381-3-70**

Scales  
 Plan 1 in = 100 ft.  
 Profile Hor. 1 in = 100 ft. Vert. 1 in = 10 ft.  
 Cross Sections Hor. 1 in = 5 ft. Vert. 1 in = 5 ft.

**Design Designation**

A.D.T.	1974	= 280
A.D.T.	1994	= 350
D.H.V.		= 45
D.		= 60
T.		= 10%
V.		= 50 M.P.H.

BEGINNING OF PROJECT 9381-3-70  
 STA. 92 + 00 =  
 ± 1541' SOUTH OF N 1/4 COR. SEC. 15, T 30N, R 12E  
 \*N = 457,400 (± 200')  
 E = 2,250,300 (± 200')  
 STA. 92+00 = END OF PROJECT 9381-2-70/S 0716(1)



END OF PROJECT 9381-3-70  
 STA. 176 + 19  
 ± 250' SOUTH & 80' WEST OF NE SEC. COR. SEC. 10, T 30 N, R 12 E  
 \*N = 463,700 (± 200')  
 E = 2,252,500 (± 200')

**Conventional Signs**

County Line	— — — — —	Culverts in Place	— — — — —
Township or Range Line	— — — — —	Culverts Required	— — — — —
Section Line	— — — — —	Drop Inlet	— — — — —
Nearest Right of Way Line	— — — — —	Power Pole	— — — — —
Proposed Right of Way Line	— — — — —	Telephone or Telegraph Pole	— — — — —
Water Fence	— — — — —	Right of Way Markers	— — — — —
County or City Limits	— — — — —	Reference Stake for Hubs Only	— — — — —
Proposed Right of Way Line	— — — — —	Marsh	— — — — —
Traveled Way or P.E.	— — — — —	Hedge	— — — — —
Railroads	— — — — —	Trees	— — — — —
Basement or Survey Line	— — — — —	Ground Elevation	— — — — —
Symbol for fluids	— — — — —	Grade Elevation	— — — — —

Layout  
 Scale 0 2 MI.

Total Net Length of Centerline = 1.594 Mi.

\* COORDINATES ARE SCALED FROM  
 USGS TOPOGRAPHIC MAP ANTIGO, WIS.  
 QUADRANGLE FOR IDENTIFICATION ONLY

STATE PROJECT	FEDERAL PROJECT	
	PROJECT	CONTRACT
9381-3-70	RS 0716 (3)	1

LANGLADE COUNTY HIGHWAY DEPARTMENT

APPROVED BY *Richard G. Millman* 5-21-74  
 COUNTY HIGHWAY COMMISSIONER DATE

ORIGINAL PLANS  
 PREPARED BY  
 V & M INC.  
 CE 00361

122 8TH. ST. SO. WIS. RAPIDS, WIS.

DATE 12-71  
 RICHARD G. MILLMAN, P.E. PRES.

STATE OF WISCONSIN  
 DEPARTMENT OF TRANSPORTATION  
 DIVISION OF HIGHWAYS

Surveyor V & M INC. District Checker R.J.S.  
 Designer V & M INC. C.O. Checker I.L.J.

Correct  
 Date 6/3/74 *R.D. Schindler*  
 District Engineer

Recommended for Approval  
 Date 7/28/74 *J.C. Hennrich*  
 Chief of Facilities Development

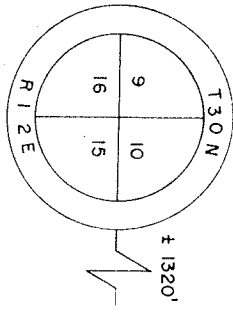
Approved  
 Date 7/24/74 *H.L. Priedler*  
 State Highway Engineer

U.S. DEPARTMENT OF TRANSPORTATION  
 FEDERAL HIGHWAY ADMINISTRATION  
 REGION 5 WISCONSIN DIVISION

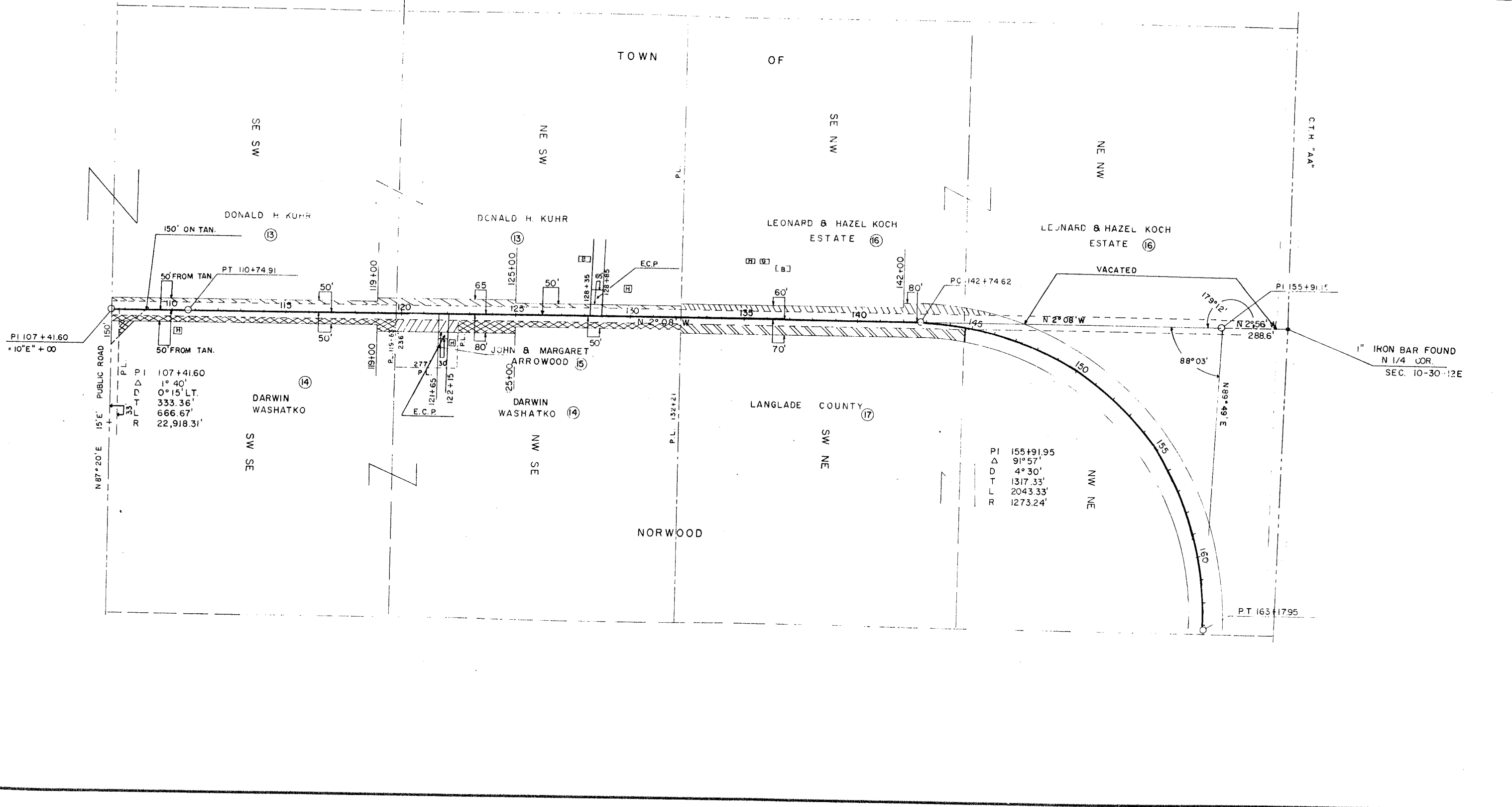
Approved  
 Date

RECORD # 20061  
 LANGLADE COUNTY SURVEYORS OFFICE  
 DATE FILED: 11/30/15 BY: D. TLUSTY





REVISION DATE	PROJECT ID	SHEET NUMBER	TOTAL SHEETS
8-12-71	KRY	4.3	
10-72	DGF		
FEDERAL PROJECT DESIGNATION PLAT OF RIGHT OF WAY REQUIRED PROJECT S 0716 (2)			
9351-3-70 7/28/71 4.2			

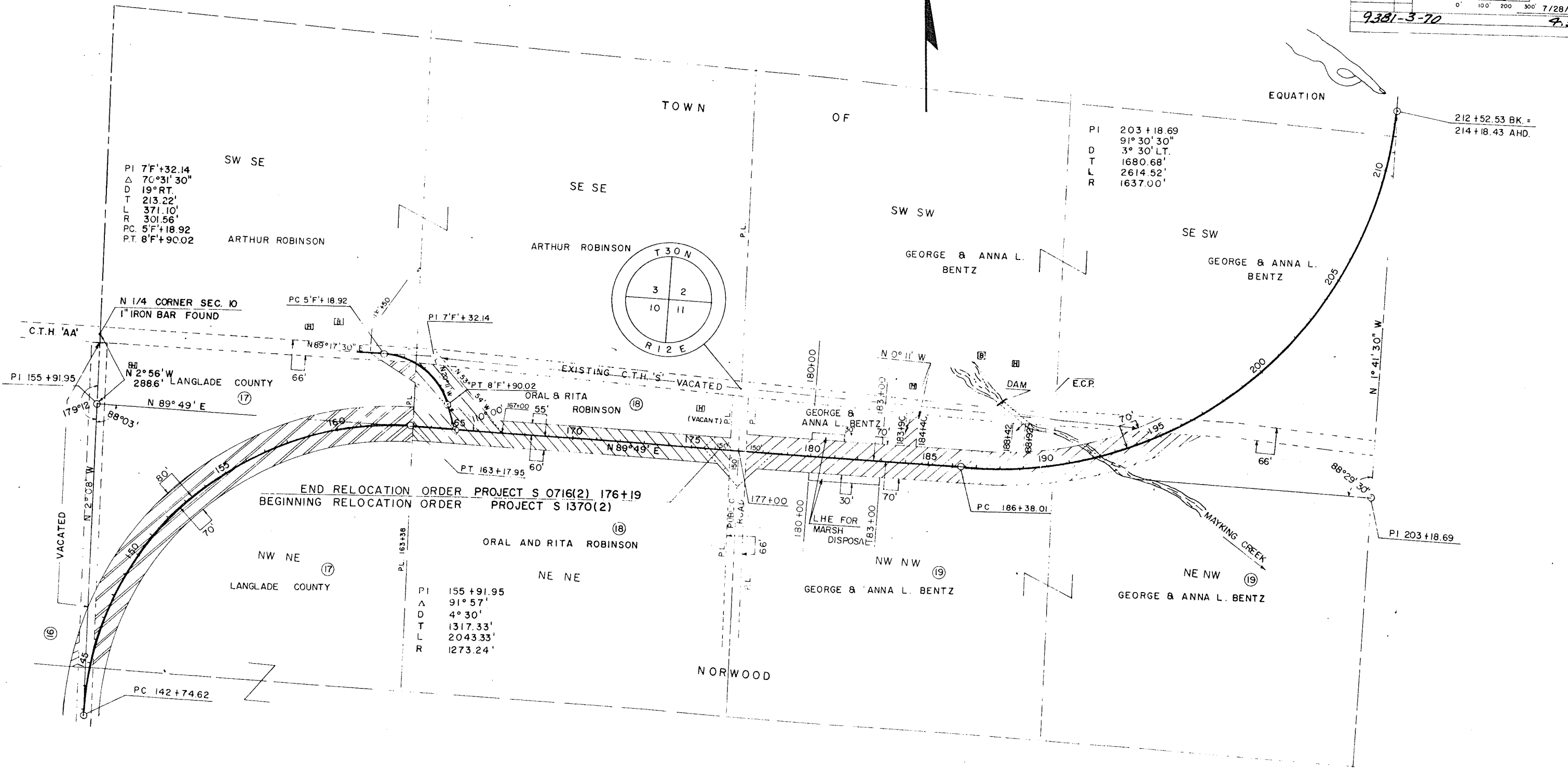


P.I. 107+41.60  
 1° 40'  
 0° 15' L.T.  
 333.36'  
 666.67'  
 22,918.31'

P.I. 155+91.95  
 Δ 91° 57'  
 D 4° 30'  
 T 1317.33'  
 L 2043.33'  
 R 1273.24'

1" IRON BAR FOUND  
 N 1/4 COR.  
 SEC. 10-30-12E

REVISION	DATE	PROJECT I.D.	SHEET NUMBER	TOTAL SHEETS
B-12-71	KRV		4.4	
FEDERAL PROJECT DESIGNATION				
PLAT OF RIGHT OF WAY REQUIRED				
PROJECT S 0716(2) & S1370(2)				
0' 100' 200' 300'				7/28/71
9381-3-70				4.3



PI 7'F'+32.14  
 Δ 70°31'30"  
 D 19°RT.  
 T 213.22'  
 L 371.10'  
 R 301.56'  
 PC 5'F'+18.92  
 PT 8'F'+90.02

PI 203+18.69  
 Δ 91°30'30"  
 D 3°30'LT.  
 T 1680.68'  
 L 2614.52'  
 R 1637.00'

PI 155+91.95  
 Δ 91°57'  
 D 4°30'  
 T 1317.33'  
 L 2043.33'  
 R 1273.24'

END RELOCATION ORDER PROJECT S 0716(2) 176+19  
 BEGINNING RELOCATION ORDER PROJECT S 1370(2)

PLAT  
 DRAWING  
 PLATTED  
 ALIGNMENT FIELD  
 NOTE BOOK  
 AT OF WAY CHECKED  
 NO.

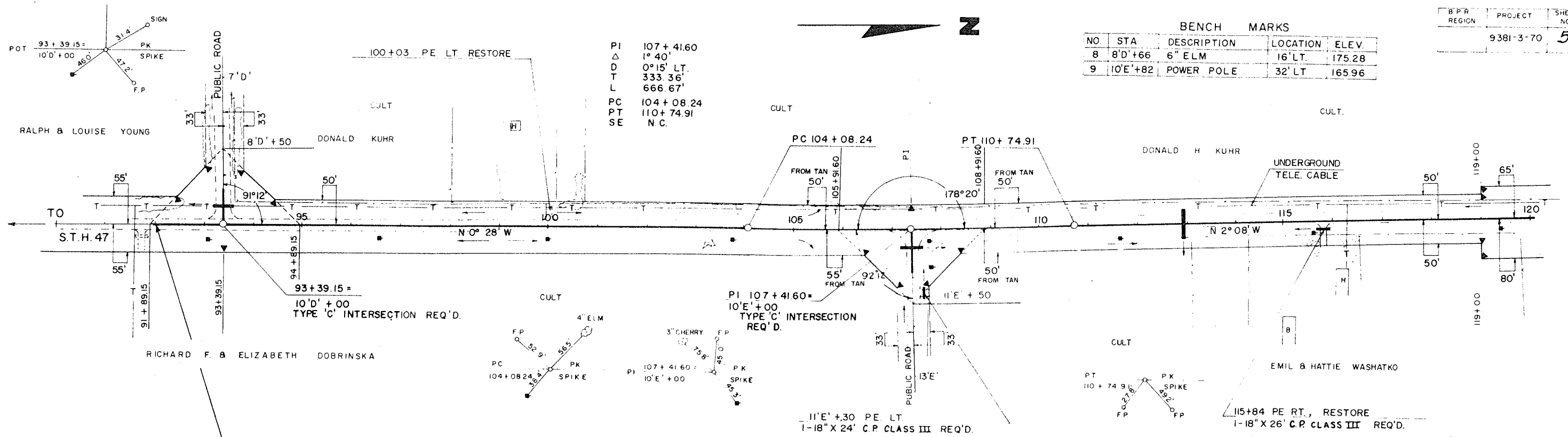
PLATTED  
 DRAWING  
 IN A  
 STRUCTURE INITIALLY CHECKED  
 NO.

STA. 92+00 TO 120+00, 14 RIGHT OF WAY MARKERS REQ'D.

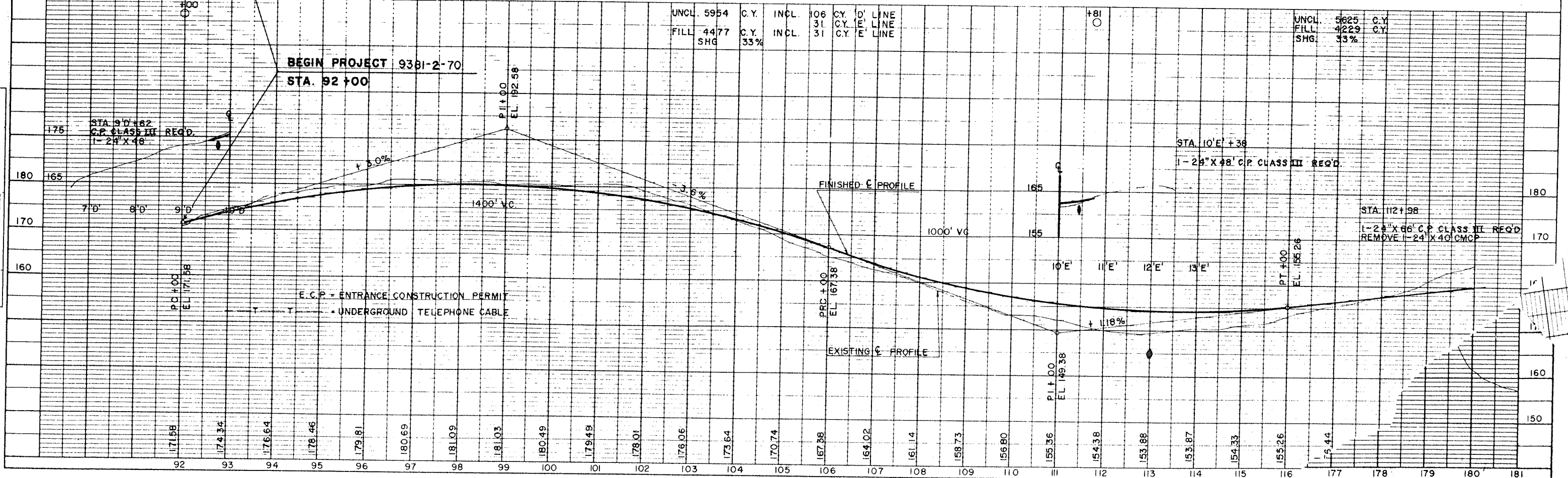
BENCH MARKS

NO	STA	DESCRIPTION	LOCATION	ELEV.
8	8'D'+66	6" ELM	16' LT.	175.28
9	10'E'+82	POWER POLE	32' LT.	165.96

B.P.R. REGION	PROJECT	SHEET NO	TOTAL SHEETS
	9381-3-70	5	



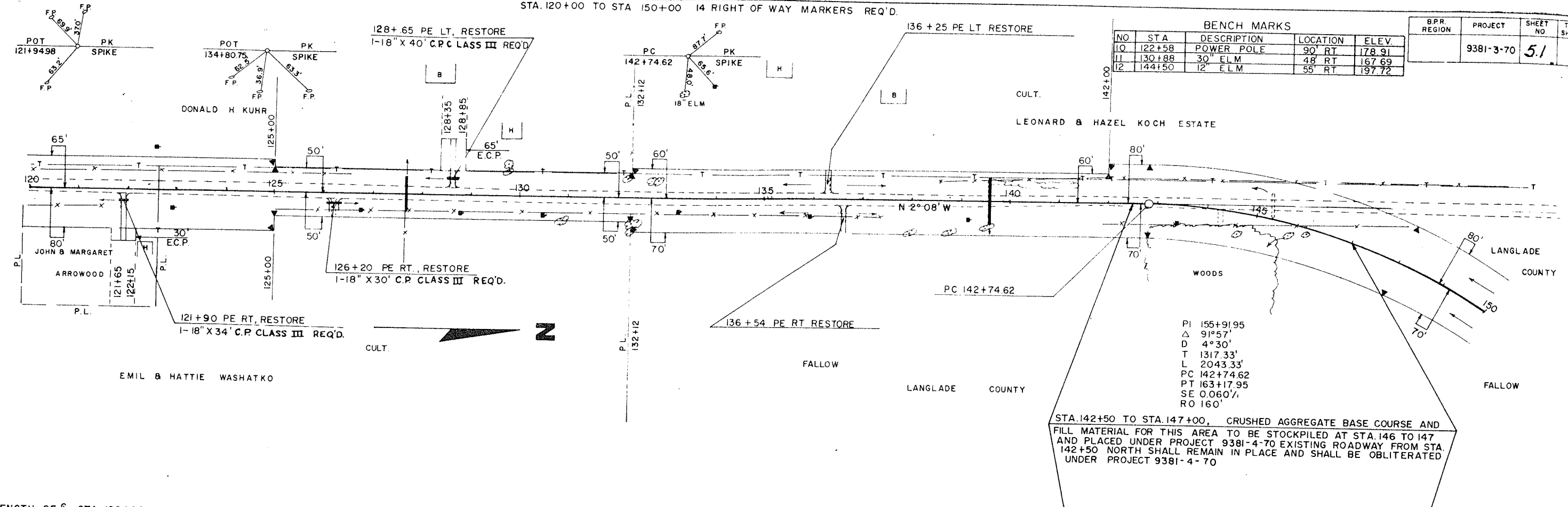
NET LENGTH OF STA. 92+00 TO STA. 120+00 = 2800 LIN. FT.



STA. 120+00 TO STA. 150+00 14 RIGHT OF WAY MARKERS REQ'D.

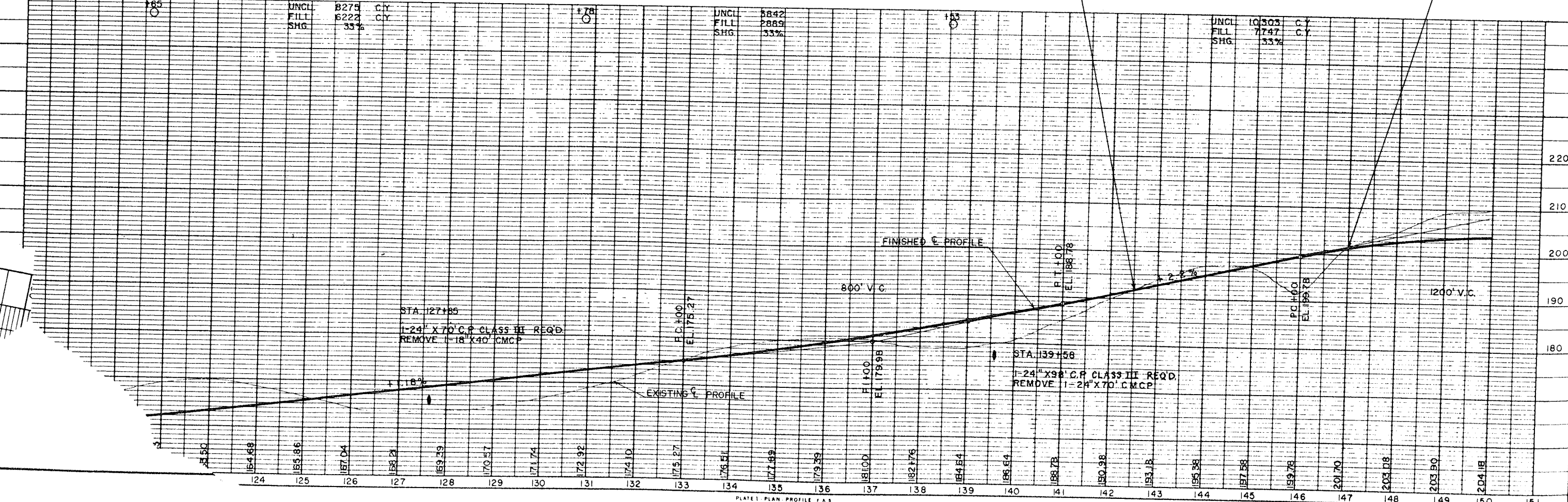
BENCH MARKS			
NO	STA	DESCRIPTION	ELEV.
10	122+58	POWER POLE	178.91
11	130+88	30" ELM	167.69
12	144+50	12" ELM	197.72

S.P.R. REGION	PROJECT	SHEET NO	TOTAL SHEETS
	9381-3-70	51	



STA. 142+50 TO STA. 147+00, CRUSHED AGGREGATE BASE COURSE AND FILL MATERIAL FOR THIS AREA TO BE STOCKPILED AT STA. 146 TO 147 AND PLACED UNDER PROJECT 9381-4-70 EXISTING ROADWAY FROM STA. 142+50 NORTH SHALL REMAIN IN PLACE AND SHALL BE OBLITERATED UNDER PROJECT 9381-4-70

NET LENGTH OF C STA. 120+00 TO STA. 150+00 = 3000 LIN. FT.



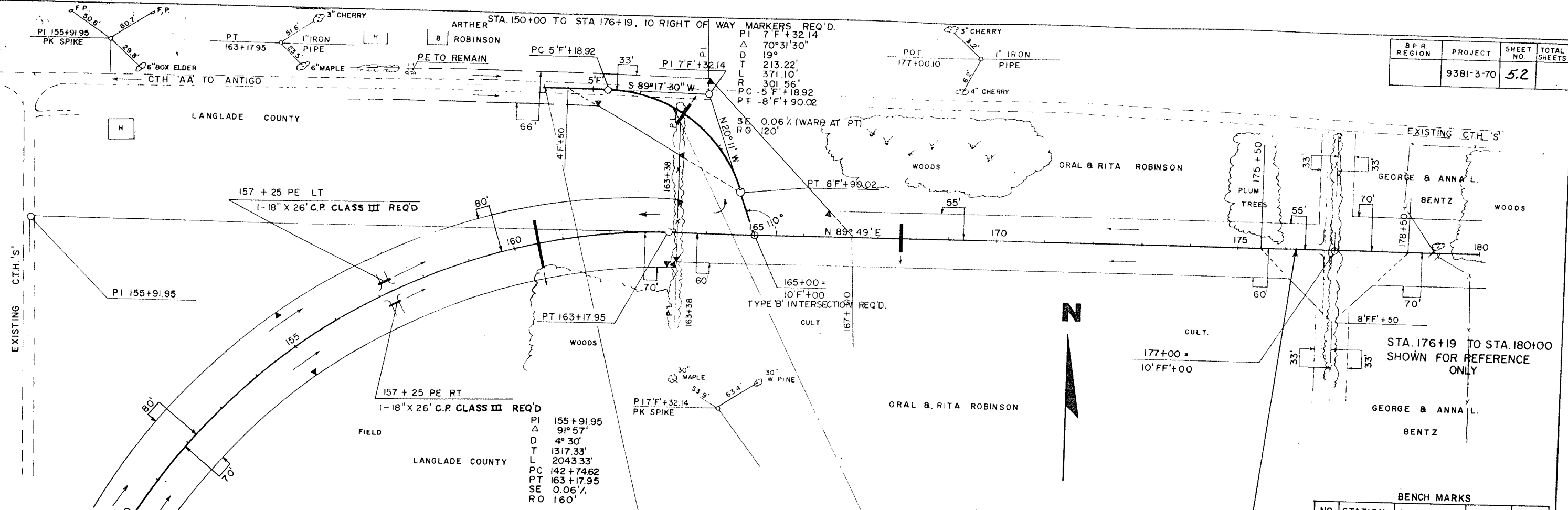
UNCL. 8275 C.Y.  
FILL 6222 C.Y.  
SHG. 33%

UNCL. 5842 C.Y.  
FILL 2889 C.Y.  
SHG. 33%

UNCL. 10505 C.Y.  
FILL 7747 C.Y.  
SHG. 33%



B.P.R. REGION	PROJECT	SHEET NO.	TOTAL SHEETS
	9381-3-70	5.2	



NET LENGTH OF STA. 150+00 TO STA. 176+19 = 2619 LIN. FT.

UNCL. FILL SHG.	17,948 C.Y.	INCL. 39 C.Y. FILL	111 C.Y. FILL
	33%	INCL. 119 C.Y. FILL	353 C.Y. FILL

BENCH MARKS

NO.	STATION	DESCRIPTION	LOCATION	ELEV.
13	163+38	8" MAPLE	97' LT.	172.53
14	177+00	6" CHERRY	170' LT.	176.26

