

| STATE PROJECT | FEDERAL PROJECT | |
|---------------|-----------------|----------|
| | PROJECT | CONTRACT |
| 9381-5-70 | RS 1296 (2) | 1 |
| | | |
| | | |

STATE OF WISCONSIN
DEPARTMENT OF TRANSPORTATION
DIVISION OF HIGHWAYS

PLAN AND PROFILE OF PROPOSED
CTH "AA" - POLAR
 HILL ROAD - CRESTWOOD ROAD
 CTH 'S'
 LANGLADE COUNTY

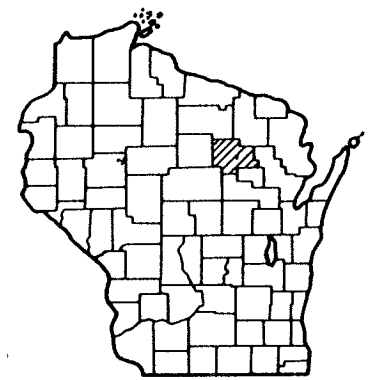
STATE PROJECT NUMBER
9381-5-70

Scales
 Plan 1 in = 100 ft
 Profile Hor 1 in = 100 ft Vert 1 in = 10 ft
 Cross Sections Hor 1 in = 5' Vert 1 in = 5'

Index of Sheets

| | |
|------------------|--------------------------|
| Sheet No. 1 | Title |
| Sheet No. 2-2.1 | Typical Cross Sections |
| Sheet No. 3 | Estimate of Quantities |
| Sheet No. 3 | Miscellaneous Quantities |
| Sheet No. 4-4.2 | Right of Way Plat |
| Sheet No. 5-5.2 | Plan and Profile |
| Sheet No. 6-6.7 | Standard Details |
| Sheet No. — | Structure Plans |
| Sheet No. — | Computer Earthwork Data |
| Sheet No. 8-8.16 | Cross Sections |

TOTAL SHEETS = 35



Design Designation

| | |
|-------------|----------|
| A.D.T. 1978 | = 220 |
| A.D.T. 1998 | = 370 |
| D.H.V. | = 45 |
| D. | = 60 |
| T. | = 10% |
| V. | = 50 MPH |

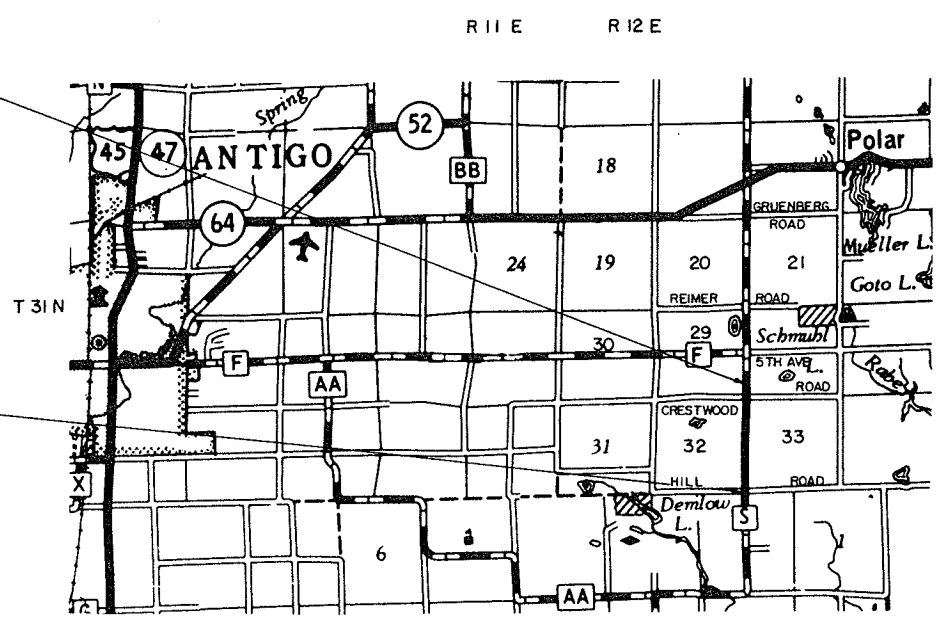
Conventional Signs

| | |
|---|-------|
| County Line | ----- |
| Township or Range Line | ----- |
| Section Line | ----- |
| New Right of Way Line | ----- |
| Present Right of Way Line | ----- |
| Wire Fence | ----- |
| Corporate or City Limits | ----- |
| Property Line | ----- |
| Traveled Way or P.E. | ----- |
| Railroads | ----- |
| Base or Survey Line | ----- |
| Warning Symbol (stable fluids pressure) | |

| | |
|-------------------------------|-------|
| Culverts in Place | ----- |
| Culverts Required | ----- |
| Drop Inlet | ----- |
| Power Pole | ----- |
| Telephone or Telegraph Pole | ----- |
| Right of Way Markers | ----- |
| Reference Stake for Hubs Only | ----- |
| Marsh | ----- |
| Hedge | ----- |
| Trees | ----- |
| Ground Elevation | ----- |
| Grade Elevation | ----- |

END OF PROJECT 9381-5-70
 STA. 314+00
 ± 182' NORTH OF NW COR.
 SEC. 33, T 31 N, R 12 E
 * N 475,400 (±200')
 * E 2,255,100 (±200')

BEGINNING OF PROJECT
 STA. 259+00 9381-5-70
 ± 35' SOUTH AND ± 50' WEST OF SW COR.
 SEC. 33, T 31 N, R 12 E
 * N 469,800 (±200')
 * E 2,255,000 (±200')



* COORDINATES ARE SCALED FROM USGS TOPOGRAPHIC MAPS, BRYANT AND MATTOON, WIS. QUADRANGLES FOR IDENTIFICATION ONLY.

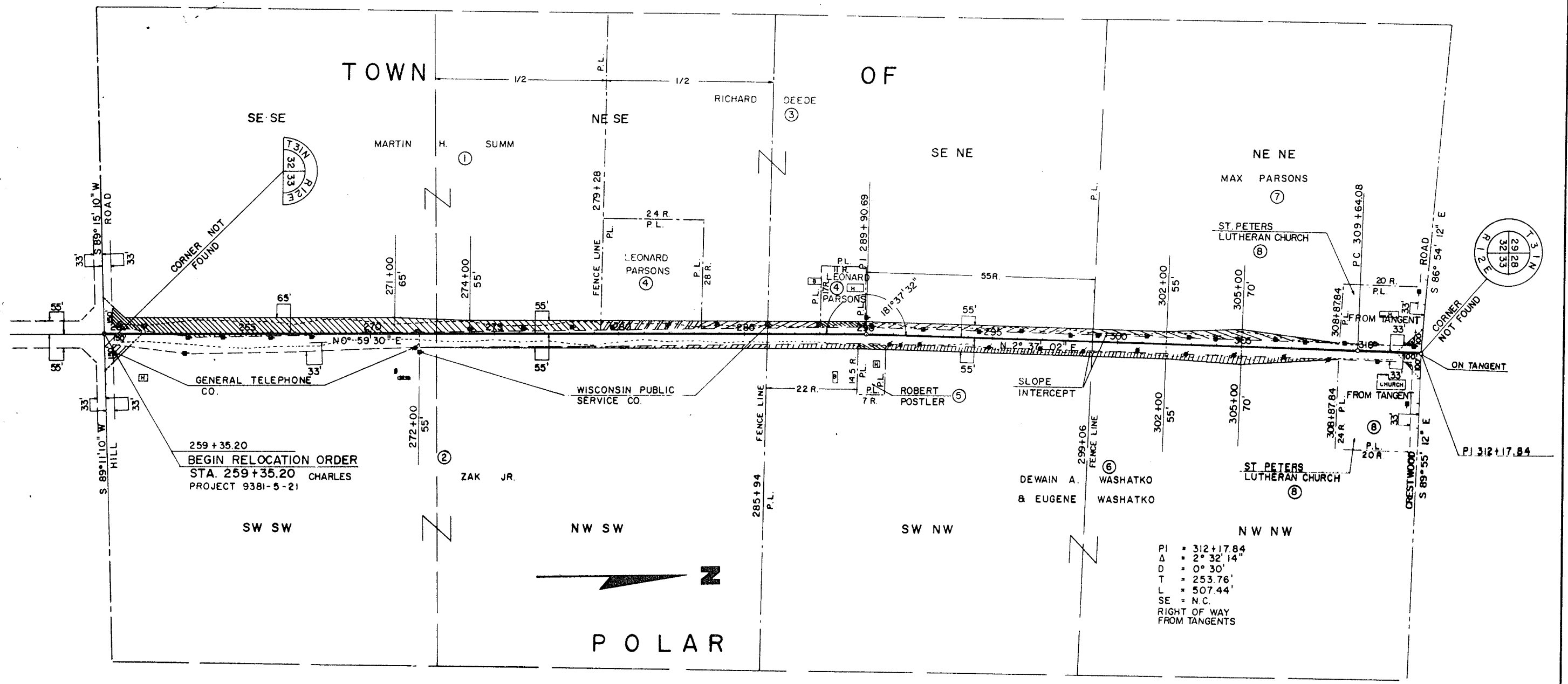
Layout
 Scale ONE MILE

Total Net Length of Centerline 1.042 Mi

| | |
|--|--|
| LANGLADE COUNTY HIGHWAY DEPARTMENT | |
| APPROVED BY | <i>Joseph J. Helke</i> County Highway Commissioner Date |
| ORIGINAL PLANS PREPARED BY V & M INC. 122 8TH ST. SO. WIS. RAPIDS, WIS CE 00361 | |
| DATE | 3-14-77 <i>Richard G. Millman</i> RICHARD G. MILLMAN |
| STATE OF WISCONSIN DEPARTMENT OF TRANSPORTATION DIVISION OF HIGHWAYS | |
| Surveyor | <i>V.M. Inc</i> District Checker |
| Designer | <i>V.M. Inc</i> C.O. Checker <i>RL</i> |
| District Supervisor | C.O. Monitor <i>7C713</i> |
| Approved | Date <i>2-6-78</i> <i>R.D. ...</i> District Engineer |
| Approved | Date <i>3-3-78</i> <i>R.D. ...</i> Chief of Facilities Development |
| Approved | Date <i>3-9-78</i> <i>R.D. ...</i> State Highway Engineer |
| U.S. DEPARTMENT OF TRANSPORTATION FEDERAL HIGHWAY ADMINISTRATION REGION 5 WISCONSIN DIVISION | |
| Approved | Date |

RECORD # 20063
 LANGLADE COUNTY SURVEYORS OFFICE
 DATE FILED: 11/30/15 BY: D. TLUSTY

| | | | |
|---|--------------|--------------|--------------|
| REVISION DATE | PROJECT I.D. | SHEET NUMBER | TOTAL SHEETS |
| | 9381-5-21 | 2 | 5 |
| FEDERAL PROJECT DESIGNATION | | | |
| PLAT OF RIGHT OF WAY REQUIRED C.T.H. 'AA' - POLAR HILL ROAD - S.T.H. 64 C.T.H. 'S' | | | |
| LANGLADE COUNTY | | | |
| CONST. PROJECT | 9381-5-70 | | 4.1 |



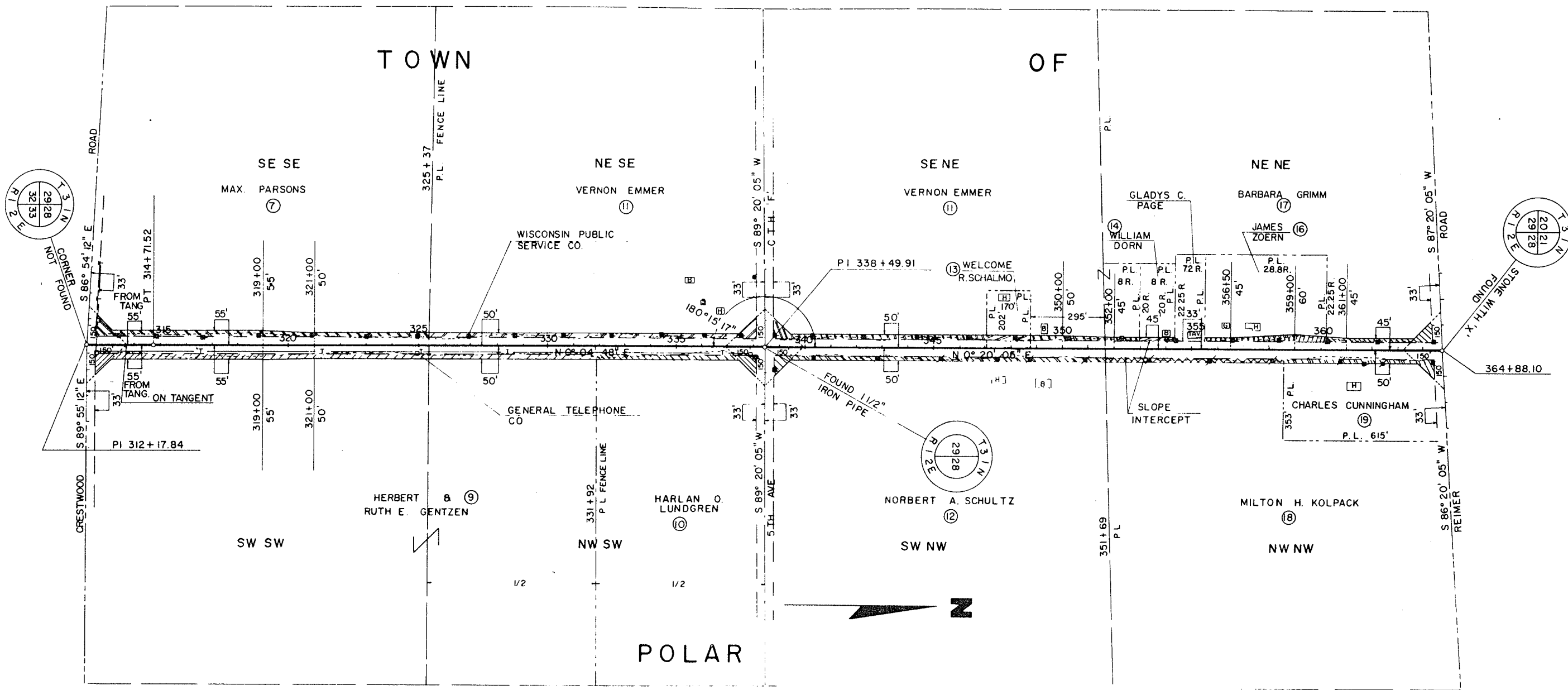
259 + 35.20
 BEGIN RELOCATION ORDER
 STA. 259 + 35.20 CHARLES
 PROJECT 9381-5-21

PI = 312+17.84
 Δ = 2° 32' 14"
 D = 0° 30'
 T = 253.76'
 L = 507.44'
 SE = N.C.
 RIGHT OF WAY
 FROM TANGENTS

P O L A R

| REVISION DATE | PROJECT I.D. | SHEET NUMBER | TOTAL SHEETS |
|----------------|---|--------------|--------------|
| | 9381-5-21 | 3 | 5 |
| | FEDERAL PROJECT DESIGNATION | | |
| | PLAT OF RIGHT OF WAY REQUIRED C.T.H. 'AA' - POLAR HILL ROAD - S.T.H. 64 C.T.H. 'S' | | |
| | LANGLADE COUNTY | | |
| CONST. PROJECT | 9381-5-70 | 4.2 | |

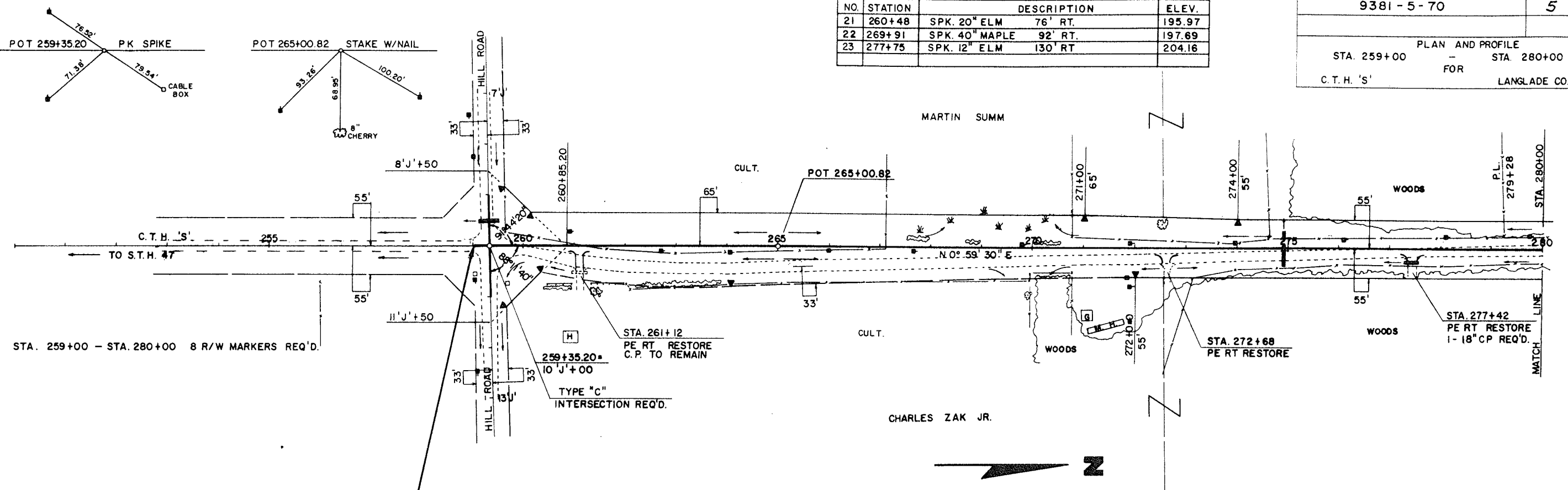
TOWN OF POLAR



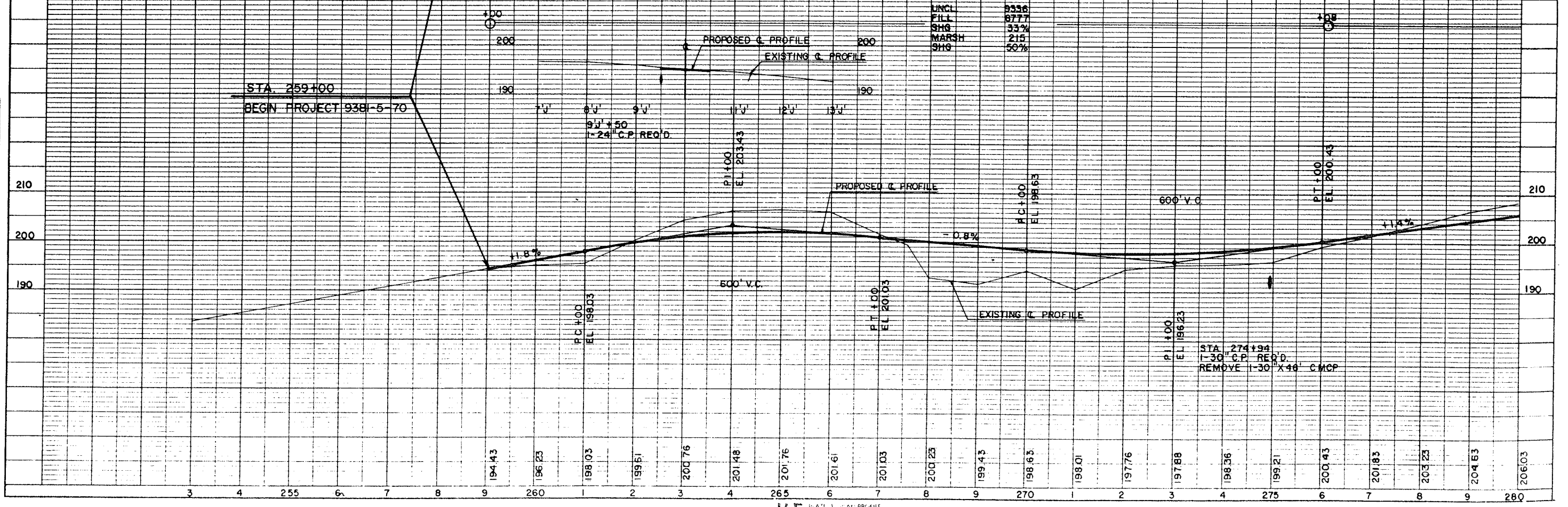
| BENCH MARKS | | | |
|-------------|---------|------------------------|--------|
| NO. | STATION | DESCRIPTION | ELEV. |
| 21 | 260+48 | SPK. 20" ELM 76' RT. | 195.97 |
| 22 | 269+91 | SPK. 40" MAPLE 92' RT. | 197.69 |
| 23 | 277+75 | SPK. 12" ELM 130' RT. | 204.16 |

| STATE PROJECT NUMBER | SHEET NO. |
|----------------------|-----------|
| 9381-5-70 | 5 |

PLAN AND PROFILE
 STA. 259+00 - STA. 280+00
 FOR
 C.T.H. 'S' - LANGLADE CO.



NET LENGTH OF CENTERLINE STA. 259+00 TO STA. 280+00 = 2,100 LIN. FT.



| DATE | BY |
|------|---------|
| 7/22 | D.P. L. |
| 7/22 | D.P. L. |
| 7/22 | D.P. L. |

PLAN
 SURVEYED BY D.P. L.
 PLOTTED BY D.P. L.
 CHECKED BY D.P. L.
 RT. OF WAY CHECKED BY D.P. L.
 NO. 111

| DATE | BY |
|------|---------|
| 7/22 | D.P. L. |
| 7/22 | D.P. L. |
| 7/22 | D.P. L. |

PROFILE
 SURVEYED BY D.P. L.
 PLOTTED BY D.P. L.
 GRADES CHECKED BY D.P. L.
 STRUCTURE NOTATIONS CHECKED BY D.P. L.
 NO. 111

| DATE | BY |
|------|---------|
| 7/22 | D.P. L. |
| 7/22 | D.P. L. |
| 7/22 | D.P. L. |

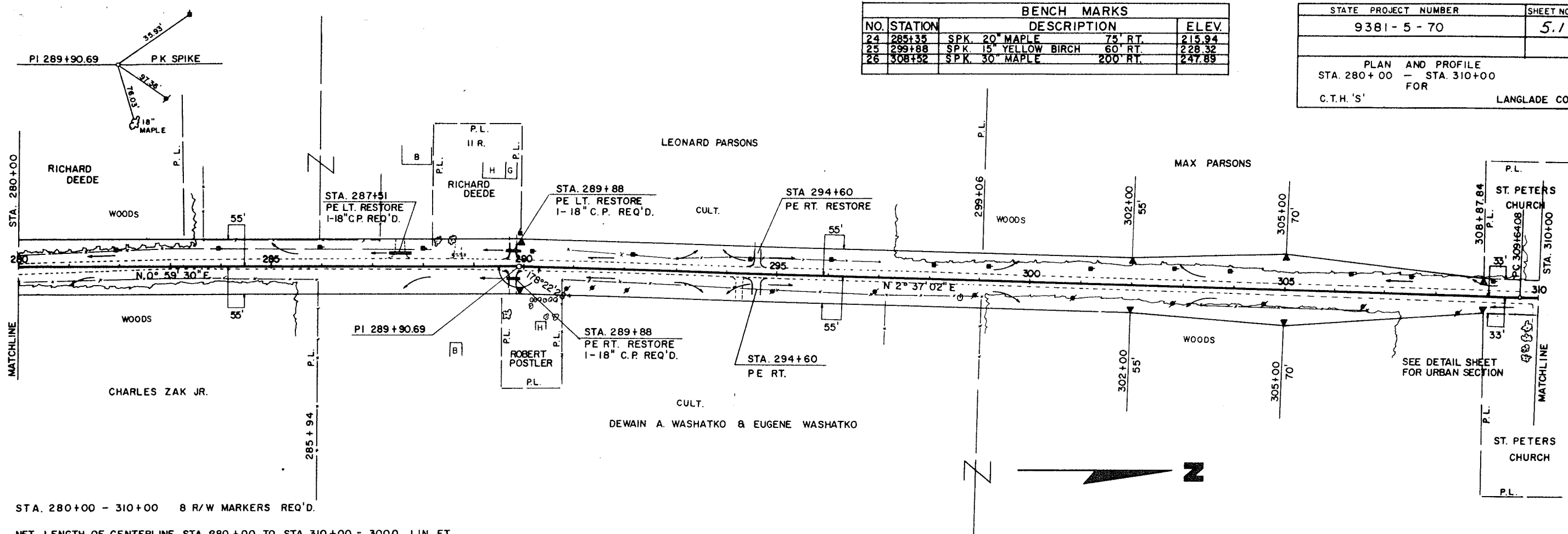
PLAN
 SURVEYED BY D.P. L.
 PLOTTED BY D.P. L.
 CHECKED BY D.P. L.
 RT. OF WAY CHECKED BY D.P. L.
 NO. 111

| DATE | BY |
|------|---------|
| 7/22 | D.P. L. |
| 7/22 | D.P. L. |
| 7/22 | D.P. L. |

PROFILE
 SURVEYED BY D.P. L.
 PLOTTED BY D.P. L.
 GRADES CHECKED BY D.P. L.
 STRUCTURE NOTATIONS CHECKED BY D.P. L.
 NO. 111

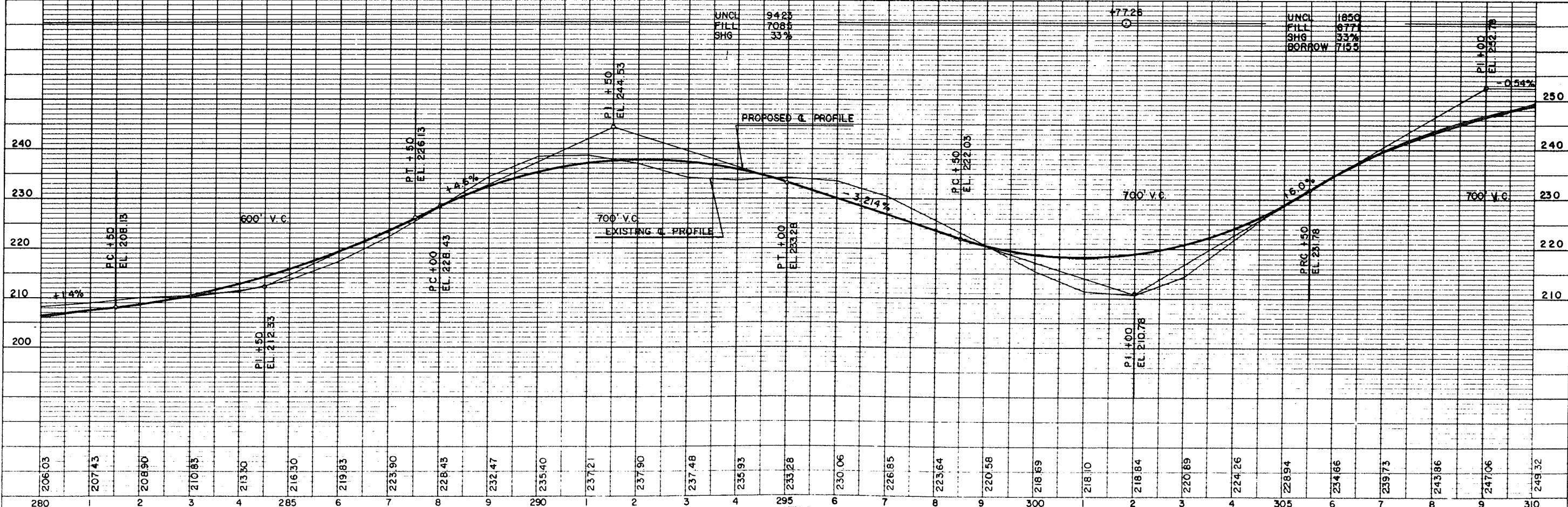
| BENCH MARKS | | | |
|-------------|---------|-------------------------------|--------|
| NO. | STATION | DESCRIPTION | ELEV. |
| 24 | 285+35 | SPK. 20" MAPLE 75' RT. | 215.94 |
| 25 | 299+88 | SPK. 15" YELLOW BIRCH 60' RT. | 228.32 |
| 26 | 308+52 | SPK. 30" MAPLE 200' RT. | 247.89 |

| | |
|---|-----------|
| STATE PROJECT NUMBER | SHEET NO. |
| 9381-5-70 | 5.1 |
| PLAN AND PROFILE STA. 280+00 - STA. 310+00 FOR C.T.H. 'S' LANGLADE CO. | |



STA. 280+00 - 310+00 8 R/W MARKERS REQ'D.

NET LENGTH OF CENTERLINE STA. 280+00 TO STA. 310+00 = 3000 LIN. FT.



PLAN
DATE: 10/1/66
BY: J.L.L.
CHECKED: J.L.L.
APPROVED: J.L.L.

PROFILE
DATE: 10/1/66
BY: J.L.L.
CHECKED: J.L.L.
APPROVED: J.L.L.

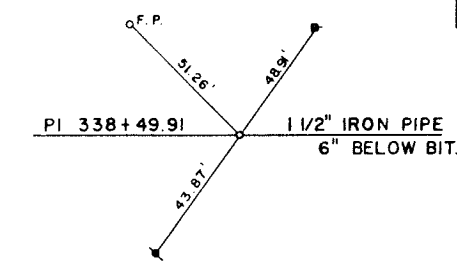
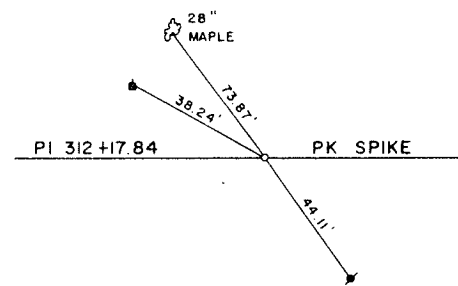
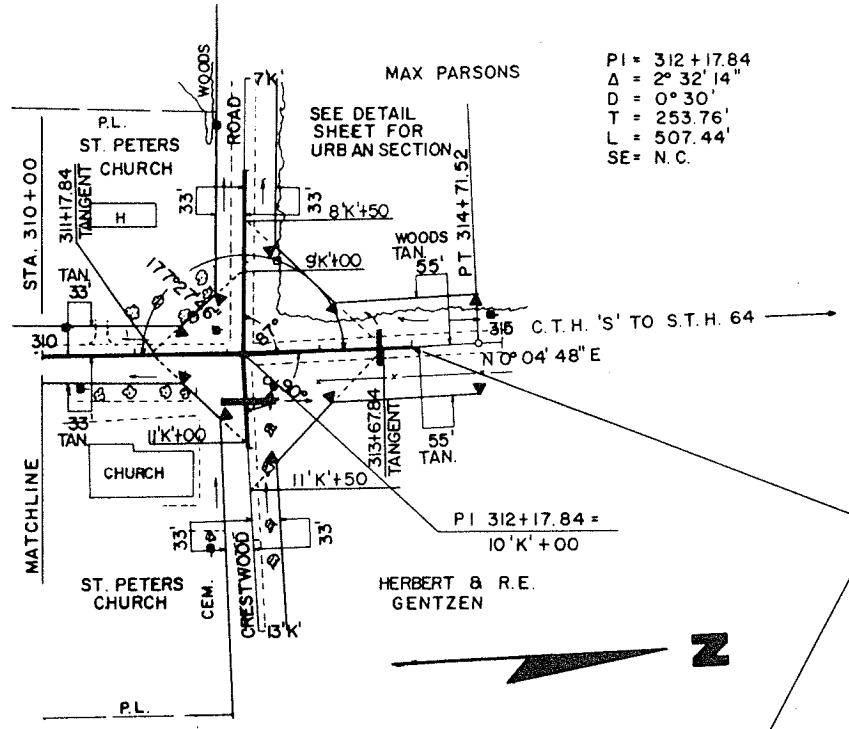
| BENCH MARKS | | | |
|-------------|---------|--------------------------|--------|
| NO. | STATION | DESCRIPTION | ELEV. |
| 27 | 316+00 | SPK 8" NOR. PINE 70' LT. | 253.17 |

| | |
|---|------------------|
| STATE PROJECT NUMBER 9381-5-70 | SHEET NO. 5.2 |
| PLAN & PROFILE STA. 310+00 TO STA. 314+00 FOR C.T.H. 'S' | |
| LANGLADE CO. | |

| | |
|-------------------------------|------------------|
| DATE 8-23-77 | BY D.E. BAE |
| REVISION 1.1 | DATE 8-23-77 |
| APPROVED BY [Signature] | DATE 8-23-77 |
| PROJECT NO. 9381-5-70 | SHEET NO. 5.2 |

| | |
|-------------------------------|------------------|
| DATE 8-23-77 | BY D.E. BAE |
| REVISION 1.1 | DATE 8-23-77 |
| APPROVED BY [Signature] | DATE 8-23-77 |
| PROJECT NO. 9381-5-70 | SHEET NO. 5.2 |

NOTE:
RIGHT OF WAY
FROM TANGENTS



PI = 312+17.84
 $\Delta = 2^\circ 32' 14''$
 $D = 0^\circ 30'$
 $L = 253.76'$
 $T = 507.44'$
 $SE = N.C.$

END OF PROJECT 9381-5-70
 STA. 314+00

STA. 310+00 TO STA. 314+71.52 10 R/W MARKERS REQ'D.

NET LENGTH OF CENTERLINE STA. 310+00 TO STA. 314+00 = 400 LIN. FT.

