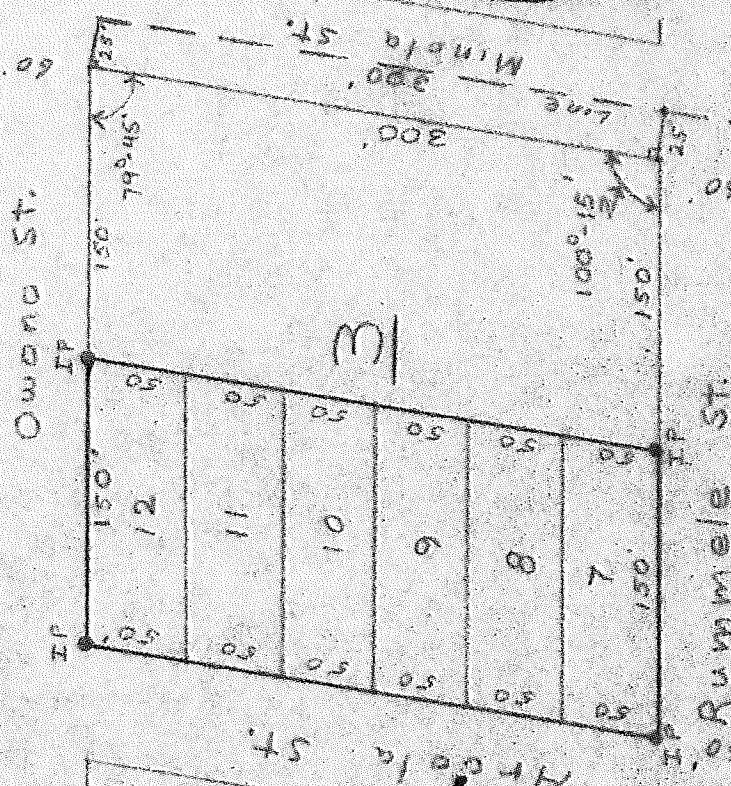
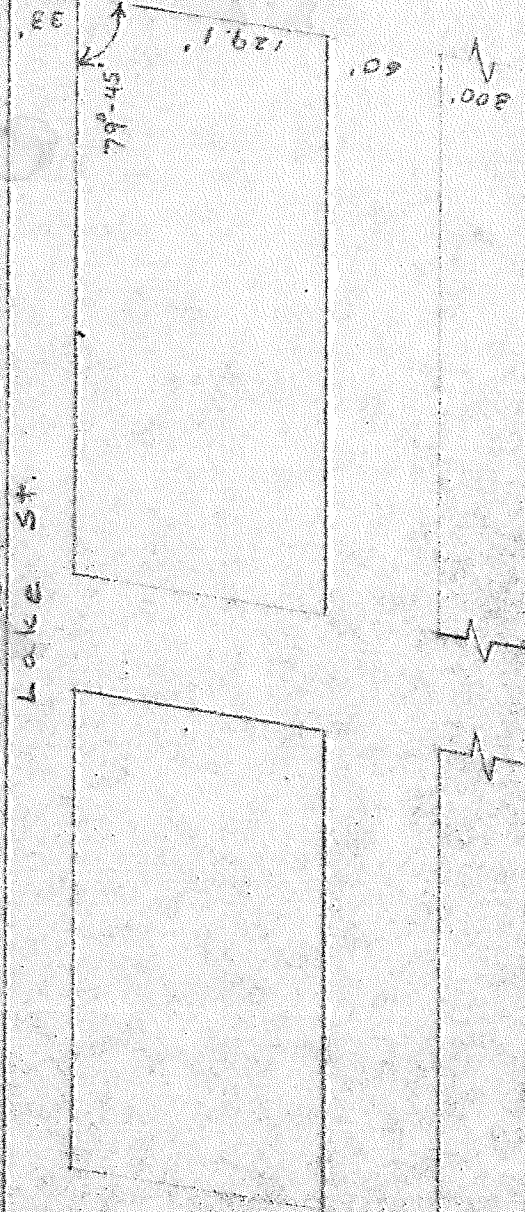
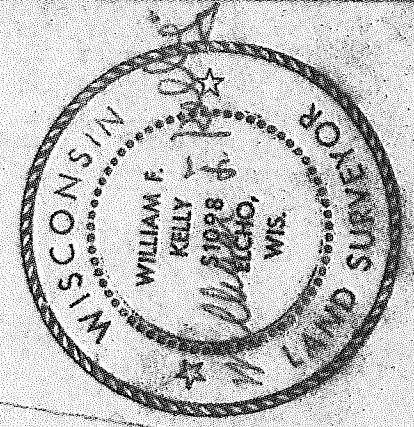


1/4 Post

Section Line 1266.8'
Lake St.



PLAT OF SURVEY
 Lots 7 thru 12, both
 inclusive in Block 3 of
 Deers Second Addition to
 the Village of Elcho in
 Sect 13 W-T 34 N R 10 E
 for James B. Griffin
 in Elcho, Wisconsin
 William F. Kelly BLS
 Scale 1" = 100'



Description
 Lots 7 thru 12, both
 inclusive in Block 3
 of Deers Second Add.
 to the Village of Elcho
 as recorded in Plat
 Book C in Langlade Co.
 Court House in Antigo, Wisc.
 Corners of lots 7 thru
 12 located from 4 Post
 as shown and B.L.S.
 Posts 1/4" in Dia. Int.
 at 4 Corners
 Deed Recorded in
 Vol 351 Page 68 in
 Langlade County Court
 House for Plat surveyed

RECORD # 20069
 LANGLADE COUNTY SURVEYORS OFFICE
 DATE FILED: 6/9/93 BY: DT 10

300' Cole St.
 655.70' B Line 1273.5'

1/4 Post

1/4 Line