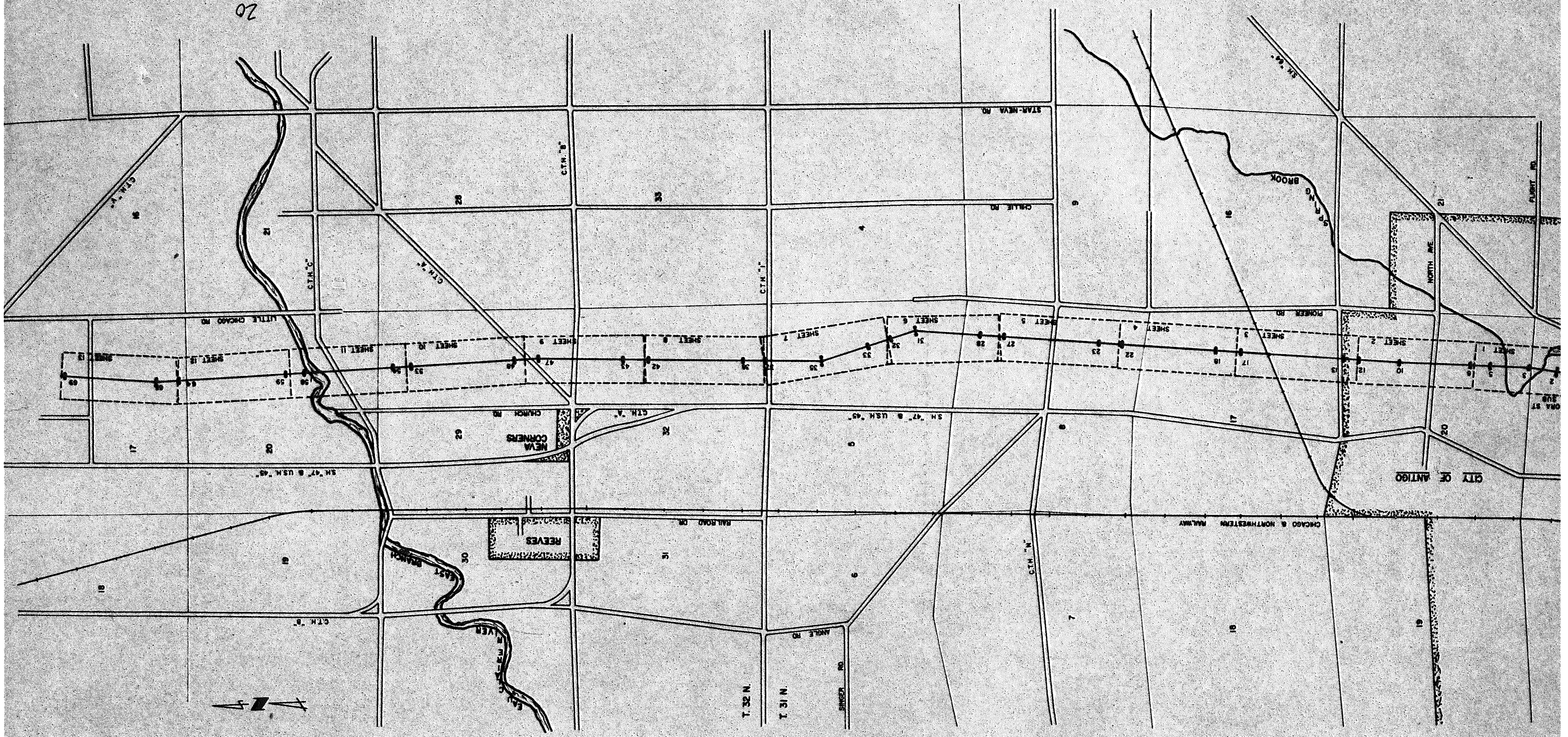


ROUTE MAP - "A-33"
ANTIGO TO RHINELANDER
SCALE: 4.1 MILE APPROX

RECORD #: 20094
DATE FILED: 6-21-93 BY: SCS
LANGLADE COUNTY SURVEYORS OFFICE

20
20034 IN 32-11
20035 IN 33-11
20036 IN 34-11
11/25/15
D.T.

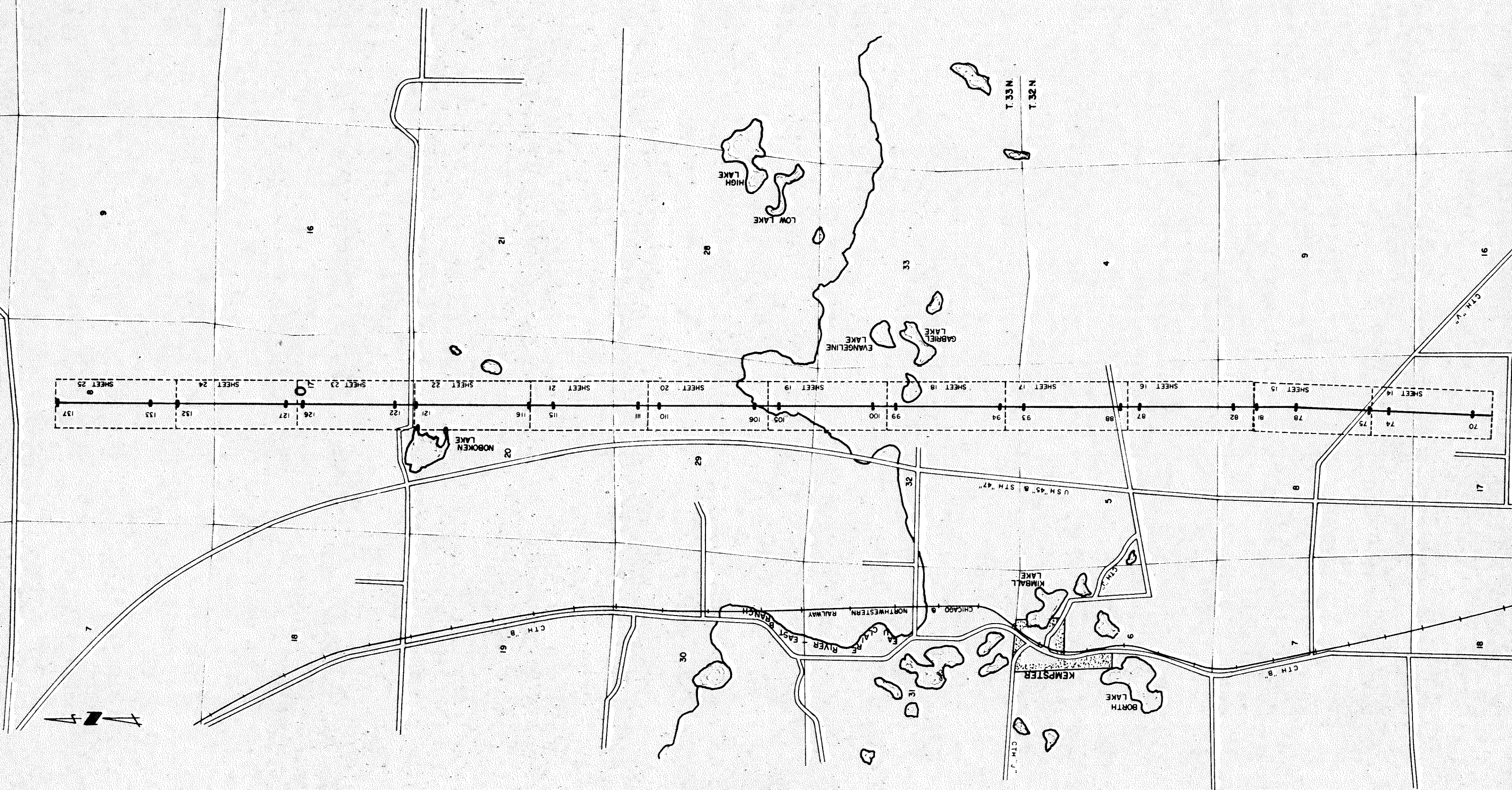


ROUTE MAP — "A-53"
ANTIGO TO RHINELANDER

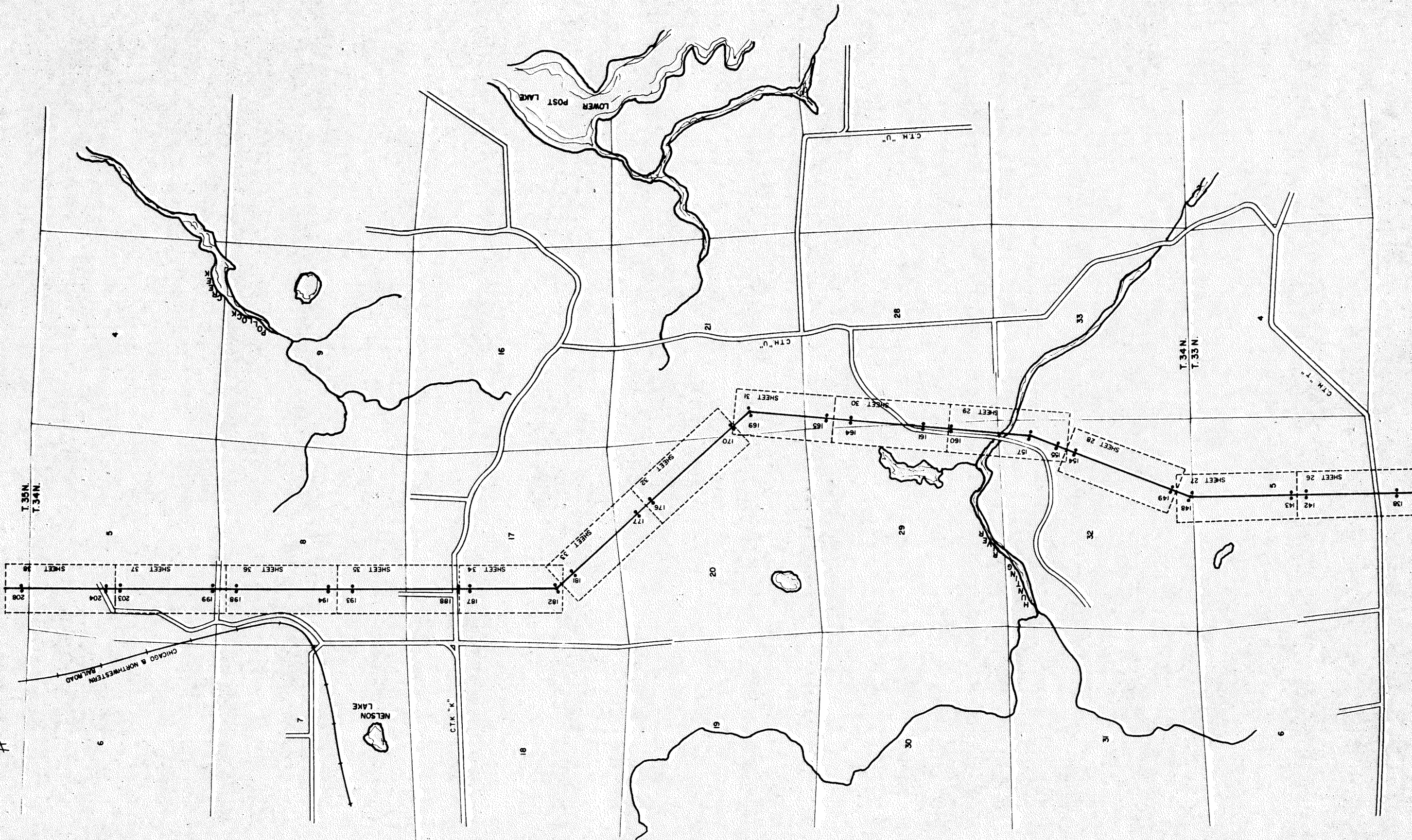
SCALE: 4" = 1 MILE APPROX

SHEET 2 OF 6

C.L.O.



ROUTE MAP — "A-53"
ANTIGO TO RHINELANDER
SCALE: 4.1 MILE APPROX



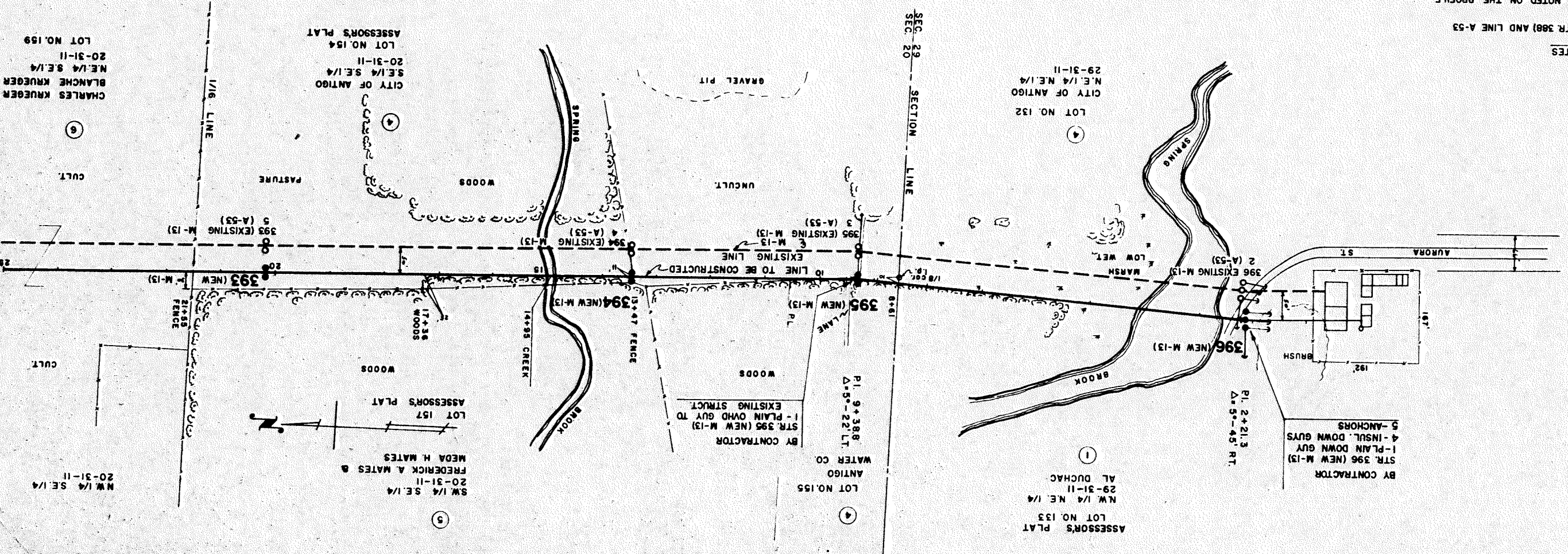
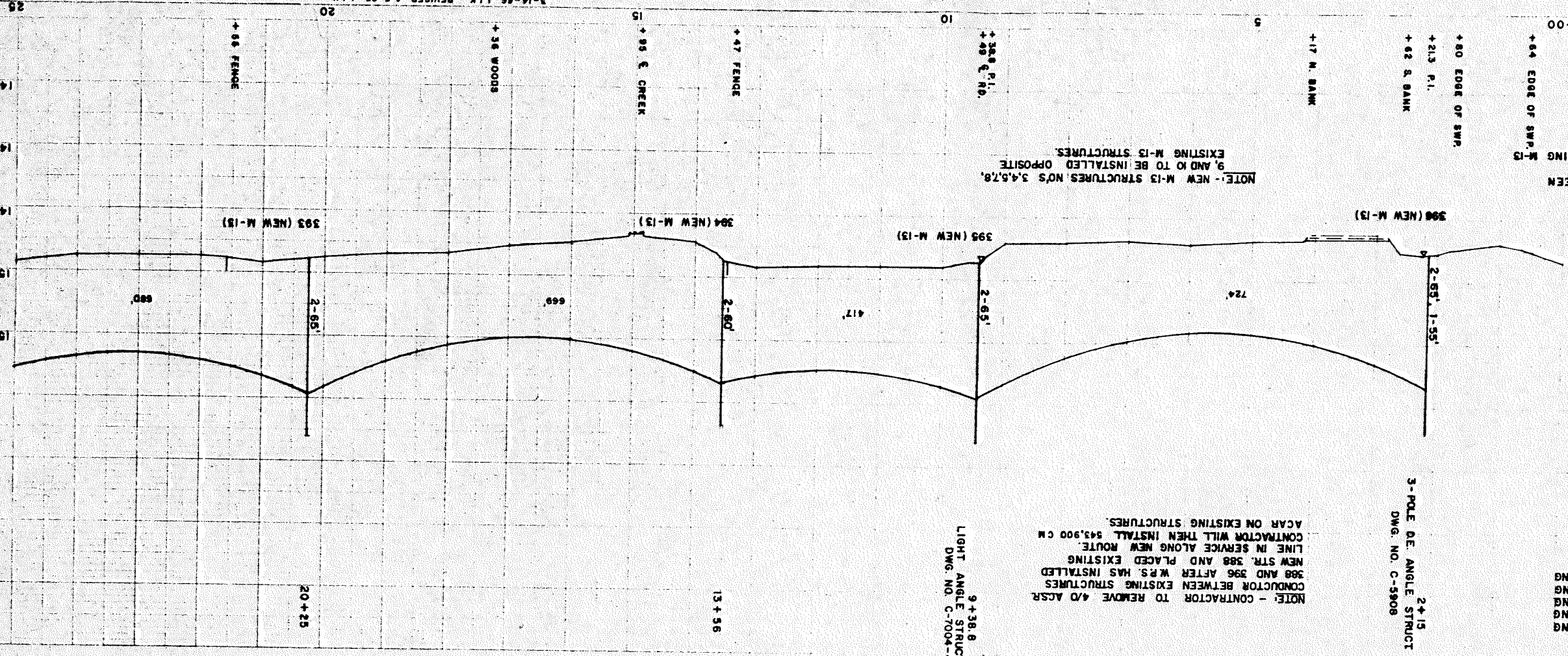
- UNLESS OTHERWISE NOTED ON THE PROFILE,
ALL STRUCTURES ARE TANGENT STRUCTURES
DWG. NO. C-7004-1
- INSULATORS
TANGENT STRUCTURES, DWG. C-7004-1 7 UNITS PER STRING
LIGHT ANGLE STRUCTS, DWG. C-7004-4 9 UNITS PER STRING
MEDIUM ANGLE STRUCTS, DWG. C-7004-4 11 UNITS PER STRING
HEAVY ANGLE STRUCTS, DWG. C-7004-6 11 UNITS PER STRING
CORNER STRUCTURES, DWG. C-7004-8 11 UNITS PER STRING
- CONDUCTORS
543,900 CM. 12/7 ACAR
- SHIELD WIRES
5/16" - 10M ALUMINUM 7 STRAND WIRE
18M ALUMINUM 7 STRAND WIRE
- DAMPERS
SHIELD WIRE - AT ALL SHIELD WIRE DEADENDS
CONDUCTOR - AT ALL DEADENDS AND THREE POLE ANGLES
- ARMOR RODS
SHIELD WIRE - AT ALL SUPPORT POINTS - 9 RODS PER SET
CONDUCTOR - AT ALL SUPPORT POINTS - 12 RODS PER SET
- CONSTRUCTION
WORK BETWEEN AURORA SUB AND EXISTING M-13
STRUCTURE 388 TO BE COORDINATED BY CONTRACTOR
AND W.P.S. AS FOLLOWS:
1. CONTRACT - CONSTRUCT NEW M-13 BETWEEN AURORA
SUB AND NEW M-13 STR. 389
 2. W.P.S. - INSTALL NEW M-13 STR. 388 IN EXISTING
M-13 LINE.
 3. W.P.S. - ENERGIZE NEW M-13 CONNECTING OLD
CONDUCTORS TO NEW LINE AT NEW M-13 STR. 388
AND CONNECTING NEW M-13 CONDUCTORS TO
EXISTING AURORA SUB BAY REMOVE EXISTING
M-13 CONDUCTORS BETWEEN NEW M-13 STR. 388 AND
M-13 STR. 386 AND AURORA SUB.
 4. CONTRACTOR - REMOVE EXISTING M-13 CONDUCTOR BETWEEN
EXISTING M-13 STR. 388 AND BETWEEN EXISTING
M-13 STR. 386 AND AURORA SUB.
 5. CONTRACTOR - REMOVE EXISTING M-13 STR. 392 AND EXISTING M-13
STR. NO. 388 AND INSTALL A-53 STR. 6.
 6. CONTRACTOR - INSTALL A-53 CONDUCTORS
EXTENDING NORTH FROM STR. 2 OF A-53
AND SHIELD WIRES FROM STR. NO. OF A-53.

NOTE: - NEW M-13 STRUCTURES NO'S 3, 4, 5, 7, 8,
9, AND 10 TO BE INSTALLED OPPOSITE
EXISTING M-13 STRUCTURES.

NOTE: - CONTRACTOR TO REMOVE 4/0 ACSSR
CONDUCTOR BETWEEN EXISTING STRUCTURES
388 AND 396 AFTER W.P.S. HAS INSTALLED
NEW STR. 388 AND PLACED EXISTING
LINE IN SERVICE ALONG NEW ROUTE.
CONTRACTOR WILL THEN INSTALL 543,900 CM
ACAR ON EXISTING STRUCTURES.

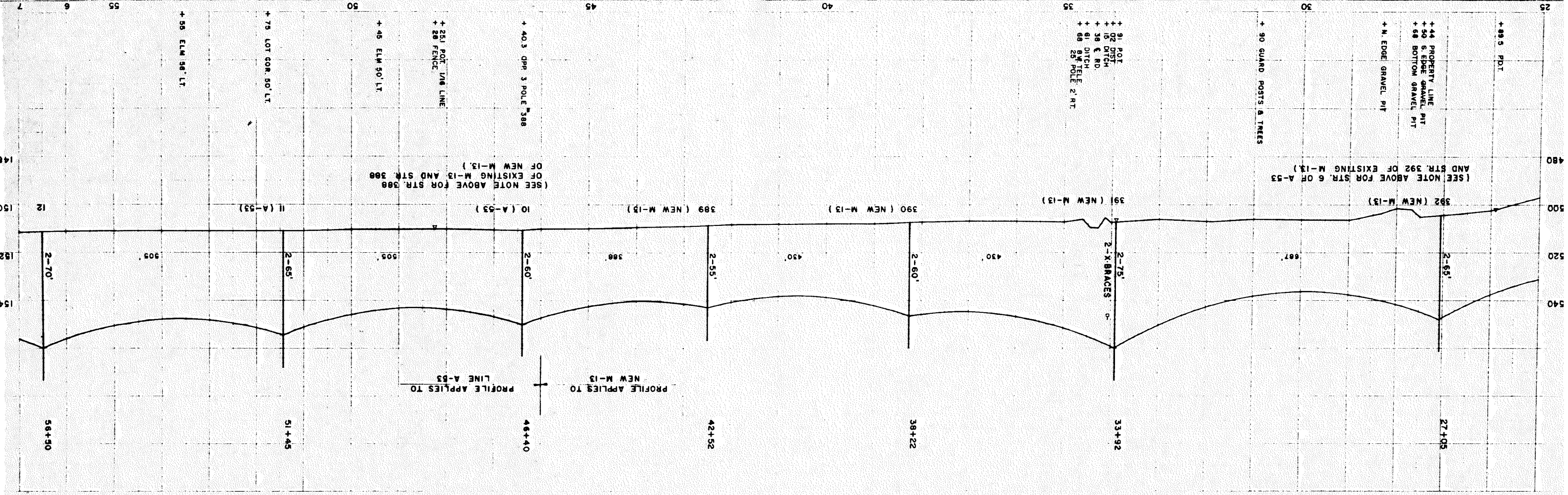
LIGHT ANGLE STRUCT
DWG. NO. C-7004-4

3-POLE DE. ANGLE STRUCT
DWG. NO. C-5908



GENERAL NOTES

REV 7-21-83 JJK
1-5-88 JJK



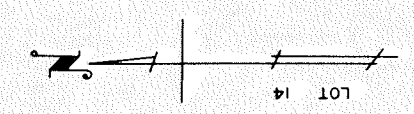
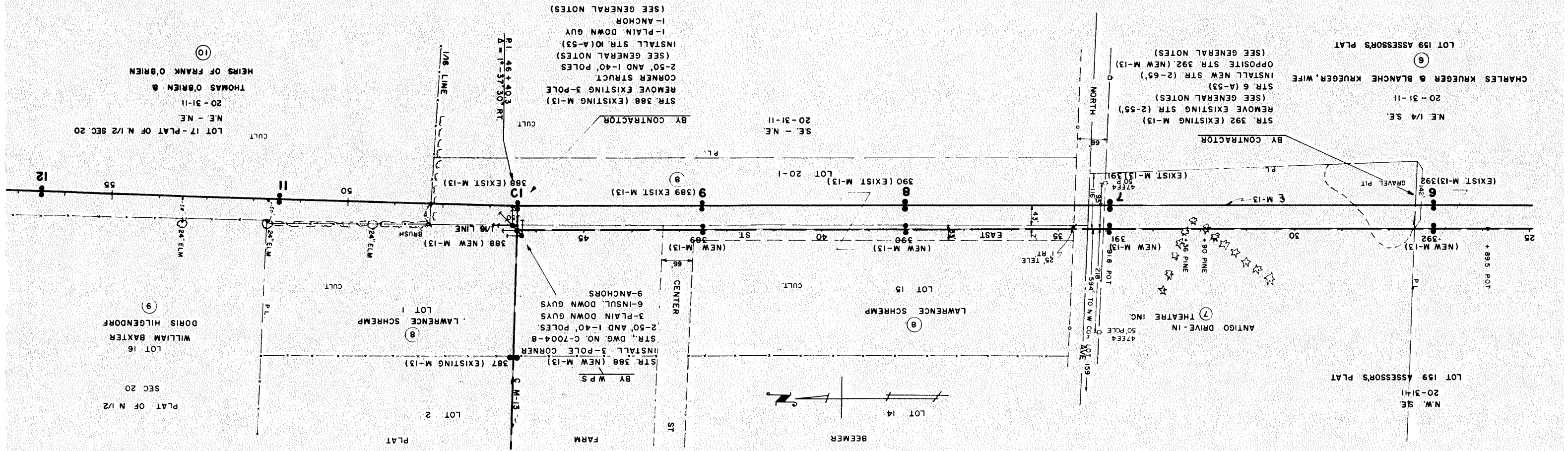
(SEE NOTE ABOVE FOR STR. 6 OF A-53 AND STR. 392 OF EXISTING M-13.)

(SEE NOTE ABOVE FOR STR. 392 (NEW M-13))

(SEE NOTE ABOVE FOR STR. 392 (NEW M-13))

PROFILE APPLIES TO NEW M-13

PROFILE APPLIES TO LINE A-53



BY CONTRACTOR

STR. 388 (EXISTING M-13)
REMOVE EXISTING 3-POLE
CORNER STRUCT.
2-50' AND 1-40' POLES
(SEE GENERAL NOTES)
INSTALL STR. 10(A-53)
I-PLAIN DOWN GUY
I-ANCHOR
(SEE GENERAL NOTES)

BY W.P.S.

STR. 388 (NEW M-13)
INSTALL 3-POLE CORNER
STR. DWG. NO. C-7004-8
2-50' AND 1-40' POLES
3-PLAIN DOWN GUY
6-INSUL. DOWN GUY
9-ANCHORS

BY CONTRACTOR

STR. 392 (EXISTING M-13)
REMOVE EXISTING STR. (2-55')
(SEE GENERAL NOTES)
STR. 6 (A-53)
INSTALL NEW STR. (2-65')
OPPOSITE STR. 392 (NEW M-13)
(SEE GENERAL NOTES)

PI 46+40.3
Δ = 1°-37'30" RT.

47E4
50 POLE

47E4
31.8 POT

218
594' TO NW CORN. LOT 159

CULT

24" ELM

24" ELM

24" ELM

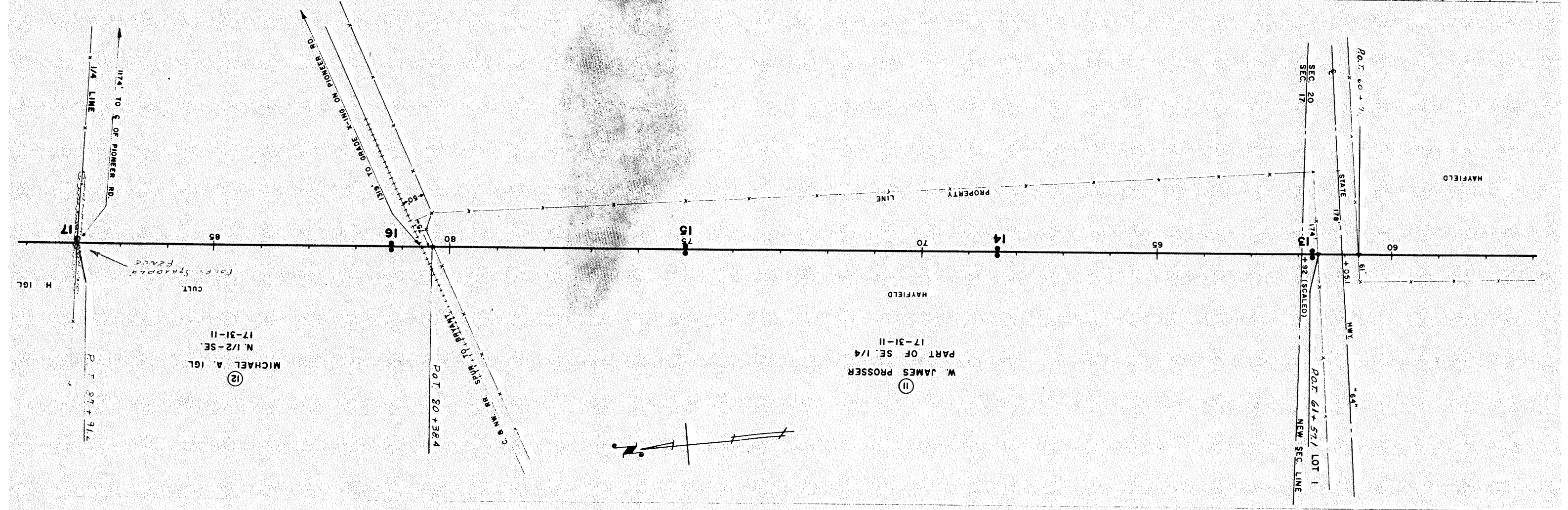
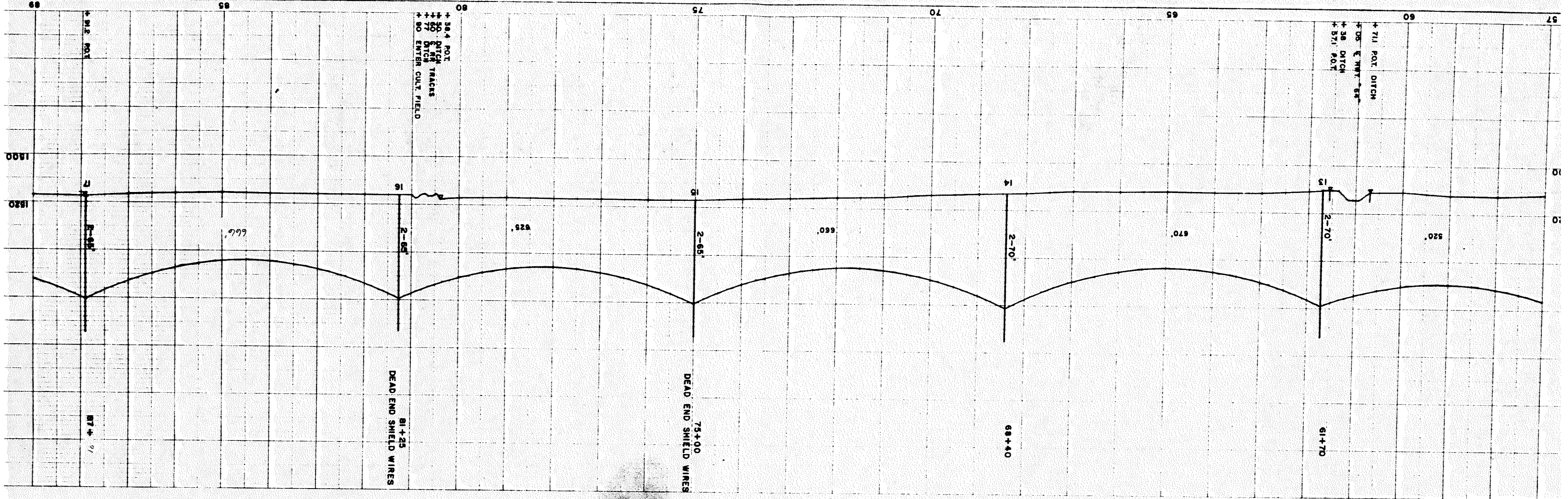
24" ELM

BRUSH

CULT

CULT

CULT



⑫
 MICHAEL A. IGL
 N. 1/2-SE.
 17-31-11

⑫
 W. JAMES PROSSER
 PART OF SE. 1/4
 17-31-11

STATE HWY 178
 P.O.T. 61+57.1 LOT 1
 NEW SEC. LINE
 P.O.T. 61+92 (SCALED)

C. & N.W. 88
 P.O.T. 80+38.4
 139. TO GRADE KING ON PIONEER RD.
 1174' TO C. OF PIONEER RD.
 1/4 LINE
 P.O.T. 87+91.4
 CULT
 H. IGL

REV 7-21-65 JJK
9-30-65 JJK
10-19-65 JJK
R.G.

1-17-68 J.J.K.

