

32-11

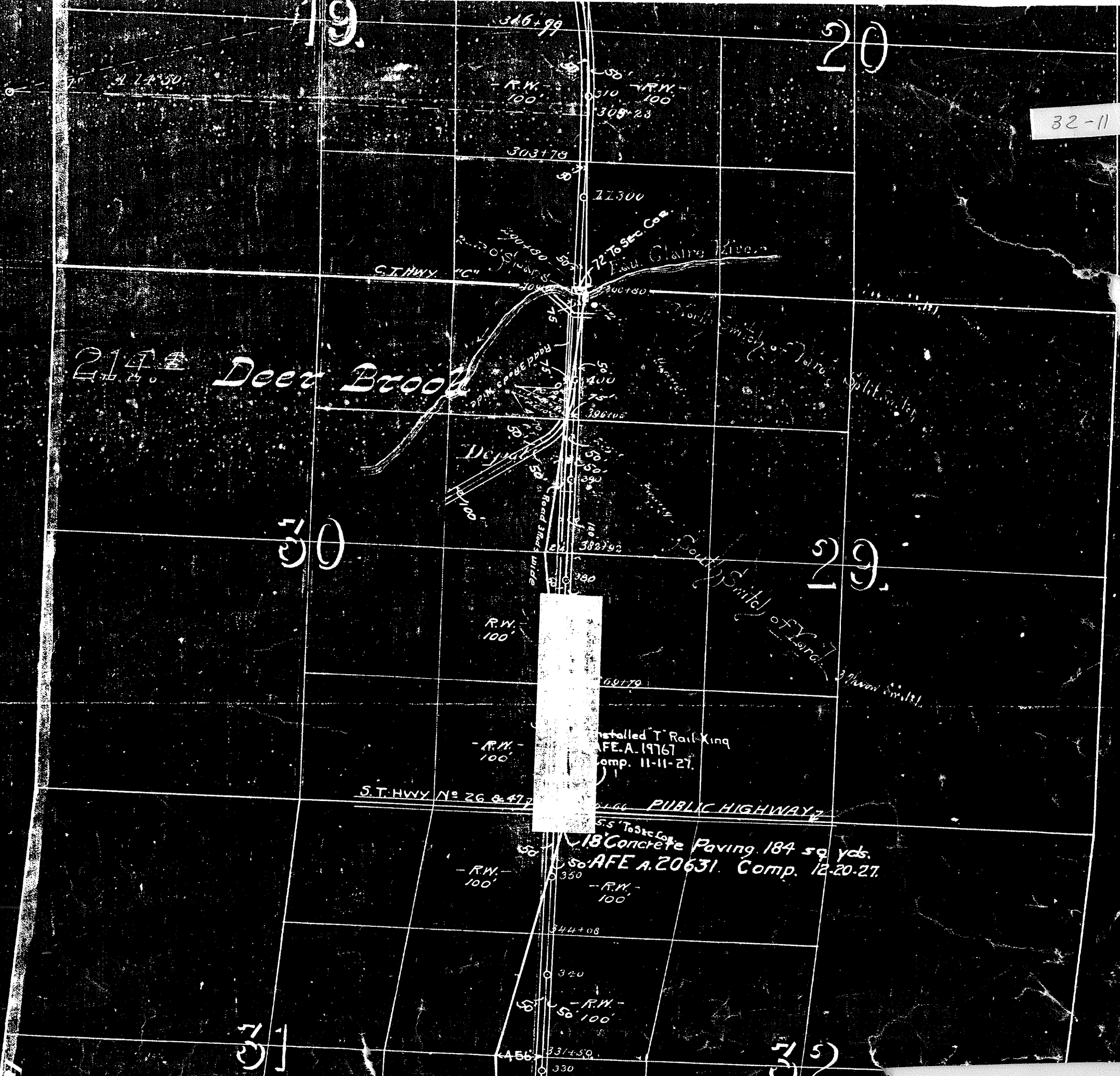
214 Deer Brook

S.T. HWY N° 26 & 47 PUBLIC HIGHWAY

18' Concrete Paving 184 sq yds.  
AFE A. 20631 Comp. 12-20-27

Installed T Rail Xing  
AFE A. 19767  
Comp. 11-11-27

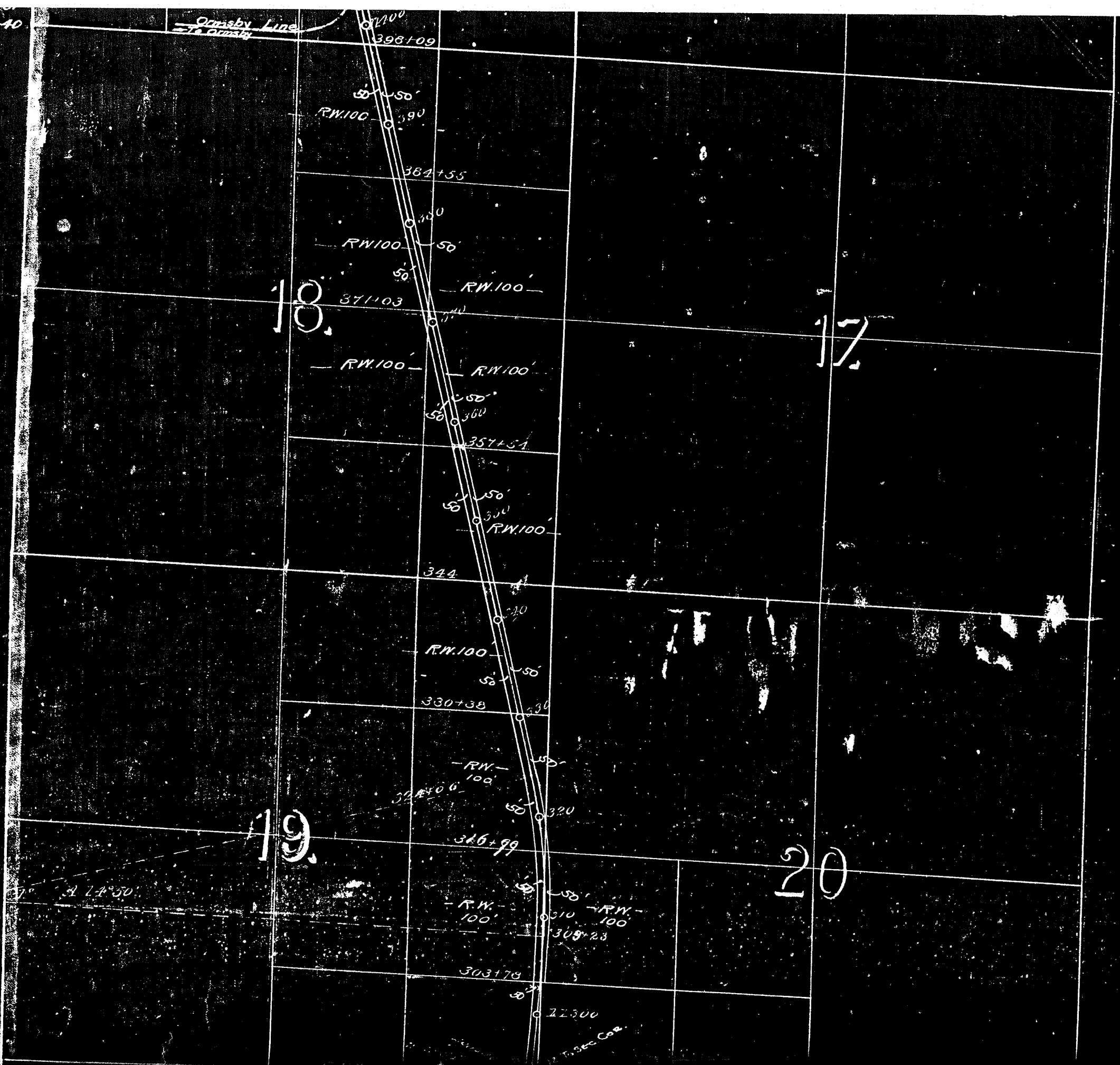
RECORD # 20096  
LANGLADE COUNTY SURVEYORS OFFICE  
DATE FILED: 6-25-93 BY: SJF



Ormsby Line

Comp 9-17-40

Ormsby Line  
-T. Ormsby



18.

17

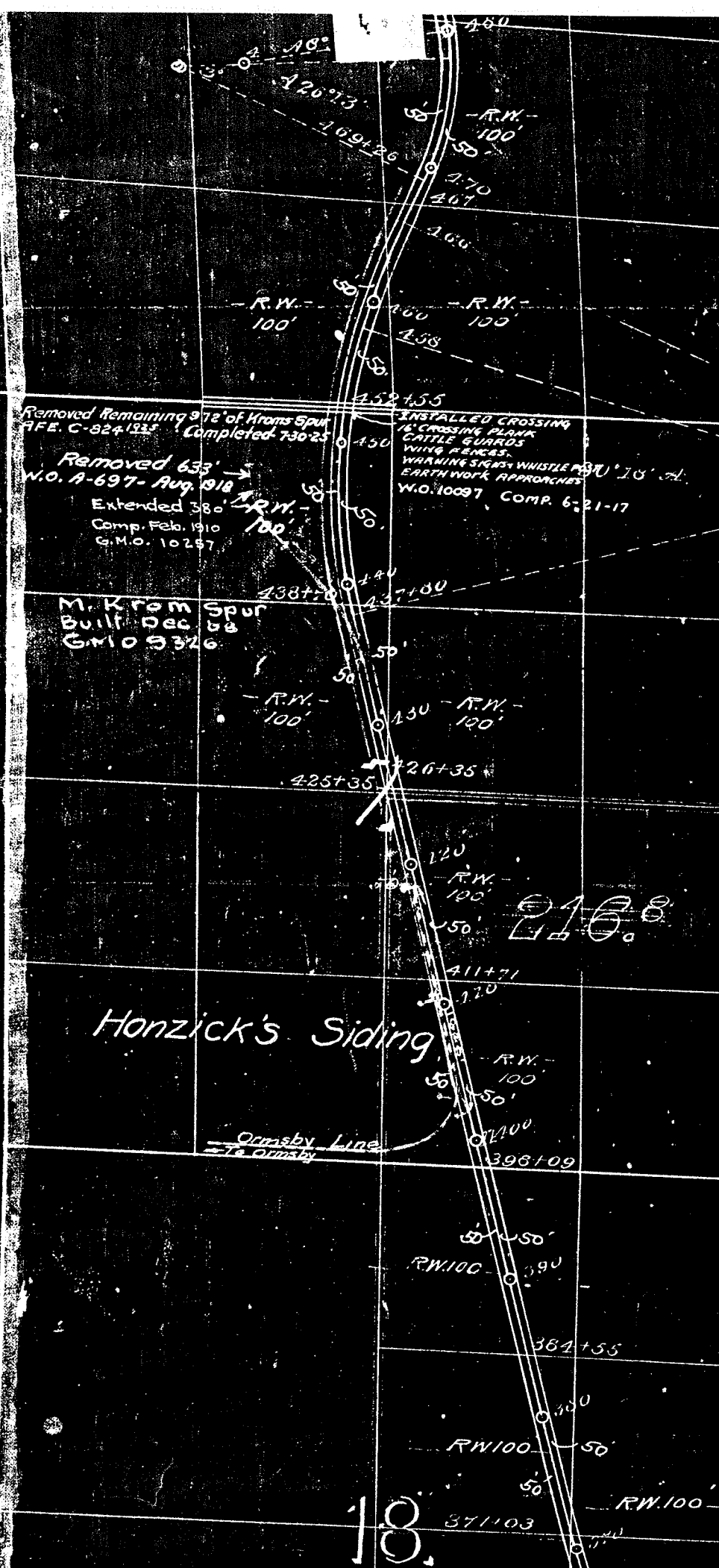
19.

20

37° 24' 50"

3225.00  
T. Ormsby

15



8

C-5225 item 261-RET  
 All trks. Comp 4-29-42

C-5079 item 198 Ret. 22217' of  
 Ormsby Line Comp 9-11-40

Honzick's Siding

Ormsby Line  
 To Ormsby

16

17

33

31

32

Town Line

33-10 33-11  
32-10 32-11

Parade Line

Kempster 218

CW Fish Log Track 900' L  
551+75 G.M.O. 13212 - June 1913  
50+25 50 Removed W.O. 9188 - Sept. 1916

Eau Claire - 11 Bents Piling - 8-778

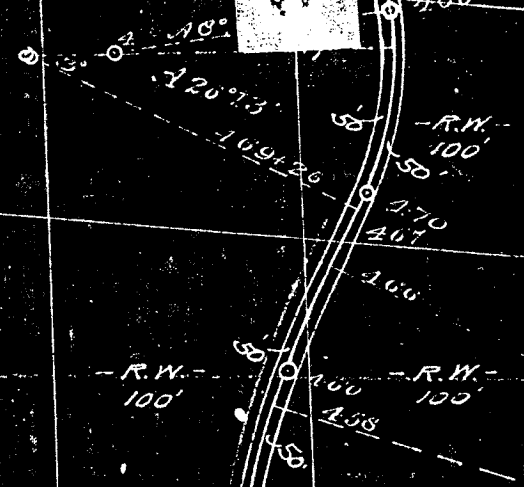
18 Bents piling

Removed Remaining 972' of Krons Spur  
R.F.E. C-924 1915 Completed 730-25

Removed 633' →  
W.O. A-697 - Aug. 1918

Extended 380' →  
Comp. Feb. 1919

INSTALLED CROSSING  
& CROSSING PLANK  
CATTLE GUARDS  
WING FENCES  
WARNING SIGNS - WHISTLE 10' A.  
EARTH WORK APPROACHED  
W.O. 10097 COMP. 6-21-17



R.W. 100'