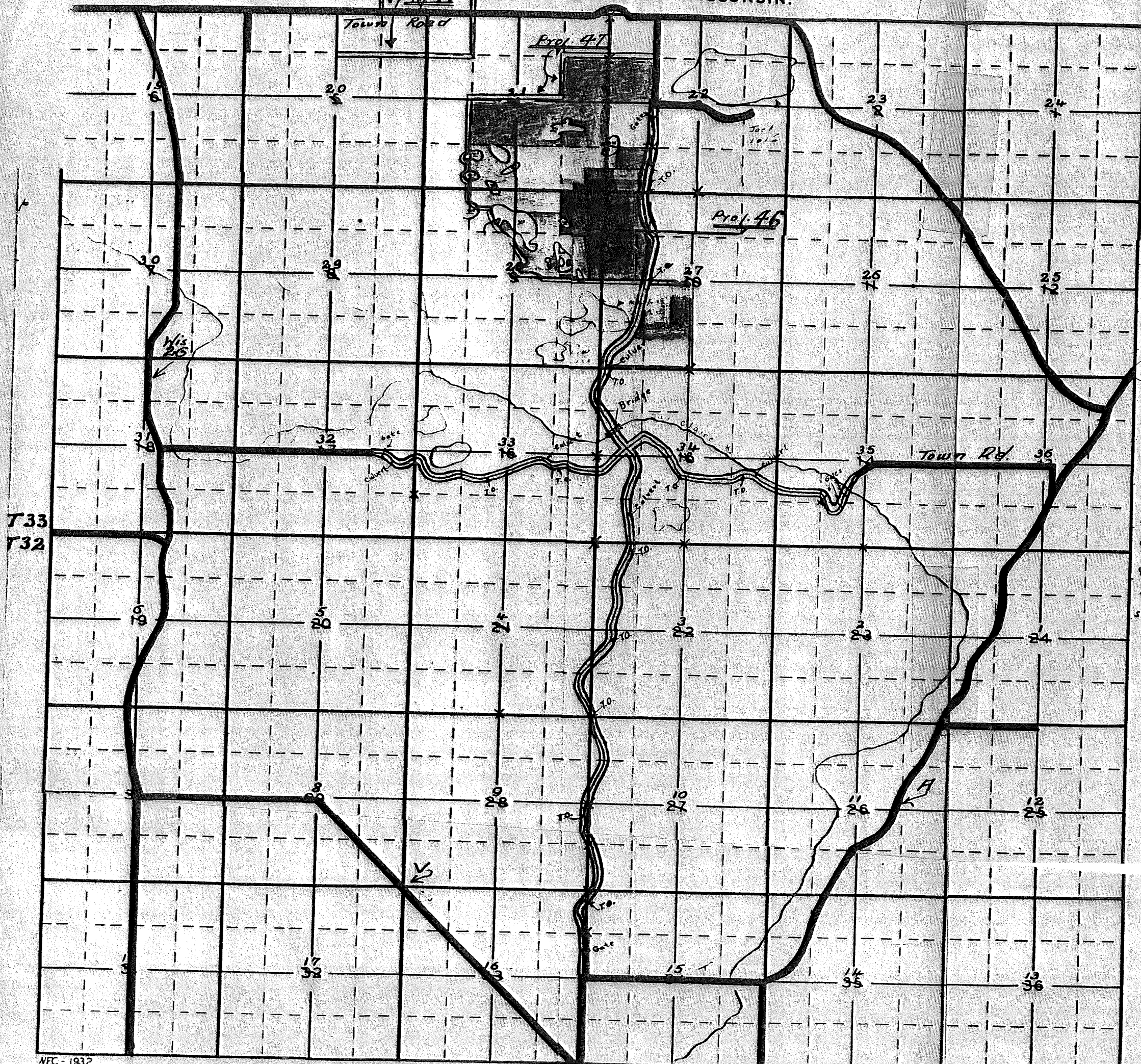


TOWNSHIP No. $\frac{33}{32}$ RANGE No. 11E
 COUNTY. STATE OF WISCONSIN.



230 paces = $\frac{1}{4}$ mile

From trail to corner

- W 1/4 22 - 10 P E to Cor
- 21/22 - 190 P W to Cor
- 1/4 28/27 - 272 P N to Cor
- 1/4 33/34 - 200 P W to Cor
- 32/34 - 190 P W to Cor
- 1/4 3 - 455 P W to Cor
- 1/4 9/10 - 47 P E to Cor
- 5/16 9/10 - 6 P W to Cor
- 9/10 - 32 P N to Cor
- N 1/2 16/15 - 5 P E to Cor
- Cent 34 - 115 P N to Cor
- 1/4 34/35 - 170 P N (Approx)
- 1/16 (SW 1/4 36) - 40 P S to Cor
- 1/4 33/34 - 100 P N to Cor
- Cent 33 - 75 P N (Approx)
- 5/8 32/33 - 232 P S to Cor

T33
T32

20101