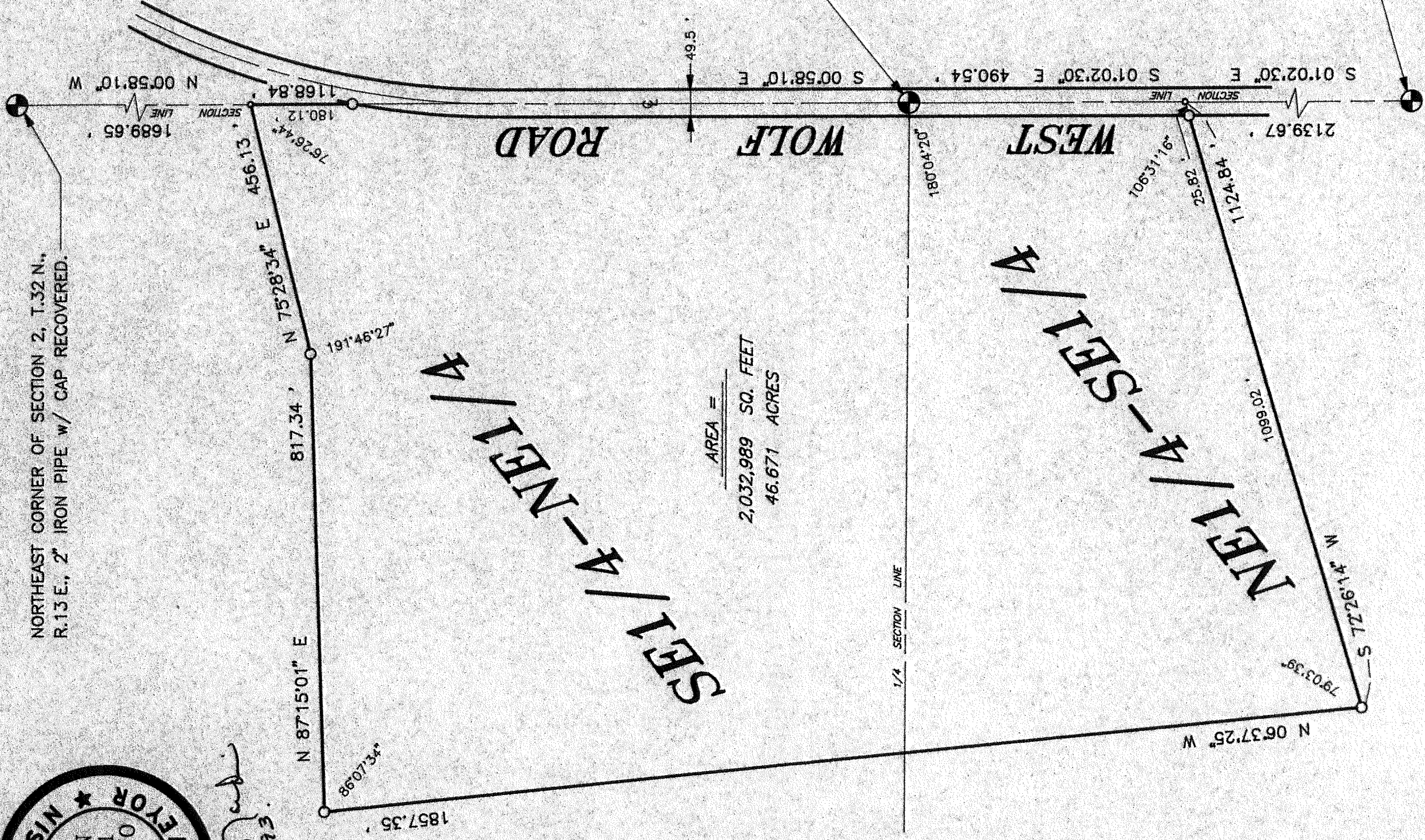


R. W. Nordin
9-2-93

NORTHEAST CORNER OF SECTION 2, T.32 N.,
R.13 E., 2" IRON PIPE w/ CAP RECOVERED.

EAST 1/4 CORNER OF SECTION 2, T.32 N.,
R.13 E., 1" IRON PIPE RECOVERED.

SOUTHEAST CORNER OF SECTION 2,
T.32 N., R.13 E., SPIKE SET.



AREA =
2,032,989 SQ. FEET
46.671 ACRES



2-462

LEGEND AND NOTES

- DENOTES SPIKE SET.
- DENOTES 1" x 24" IRON PIPE SET, MINIMUM WEIGHT = 1.13 LBS./LINEAL FOOT.

NORDIN & ASSOC., INC.
PROFESSIONAL LAND SURVEYORS SHAWANO, WI

MAP OF PART OF THE SE 1/4 OF THE NE 1/4
AND PART OF THE NE 1/4 OF THE SE 1/4,
SECTION 2, T.32 N., R.13 E., TOWN OF
LANGLADE, LANGLADE COUNTY, WISCONSIN.

RECORD # 20104
LANGLADE COUNTY SURVEYORS OFFICE
DATE FILED: 9/10/93 BY: D.T.

DRAWN BY: CLIFF SCALE: 1" = 200' CLIENT: GERALD ORT