

64 Job From Co-P. To S.T.H. 55 1985

Index of Sheets

Sheet No.	1	Title
Sheet No.	2 - 2.2	Typical Sections and Details
Sheet No.	3 - 3.1	Estimate of Quantities
Sheet No.	3A	Miscellaneous Quantities
Sheet No.	—	Right of Way Plat
Sheet No.	5 - 5.11	Plan and Profile
Sheet No.	6 - 6.16	Standard Detail Drawings
Sheet No.	—	Standard Sign Plates
Sheet No.	—	Structure Plans
Sheet No.	9 - 9.11	Computer Earthwork Data
Sheet No.	912-961	Cross Sections

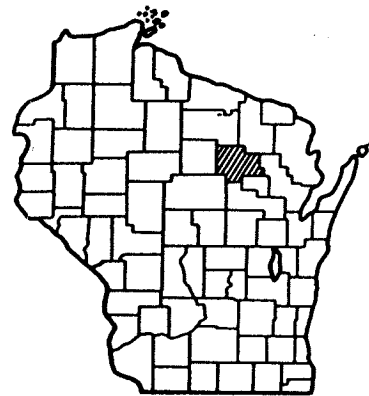
TOTAL SHEETS = 98

STATE OF WISCONSIN DEPARTMENT OF TRANSPORTATION

PLAN OF PROPOSED IMPROVEMENT

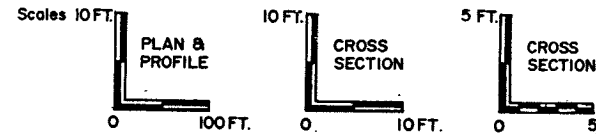
C.T.H. "P" - S.T.H. 55

STATE PROJECT	FEDERAL PROJECT	
	PROJECT	CONTRACT
9140-01-71		1



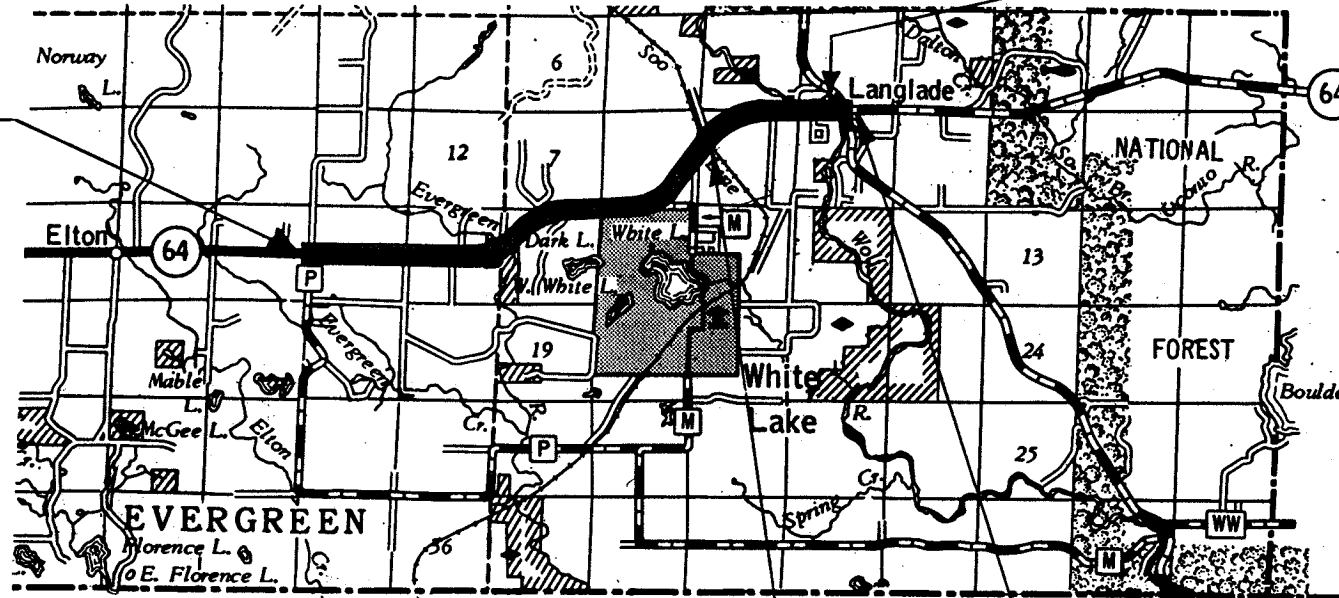
S.T.H. 64
LANGLADE COUNTY

STATE PROJECT NUMBER
9140-01-71



EXCEPTION TO NET & LENGTH
STA 340+08 TO STA 341+50

BEGIN PROJECT
STA. 17+00
N-488,600 (±200)
E-2,297,300 (±200)



2,360,000' E
500,000'

Design Designation

A.D.T.	1985	=	1420
A.D.T.	2005	=	1725
D.H.V.	2005	=	86
D.		=	60-40
T.		=	11%
V.		=	60 M.P.H.

Conventional Signs

County Line	-----	Caution Symbol (Combustible fluids under pressure)	
Township or Range Line	-----	Railroads	+++++
Section Line	-----	Fence	---X---X---
Corporate or City Limits	//////	Culverts in Place	-----
Property line	-----	Culverts Required	-----
Lot Line	-----	Power Pole	■
Existing Right of Way line	-----	Telephone or Telegraph Pole	●
New Right of Way Line	-----	Right of Way Markers	▲
Case or Survey Line	-----	Marsh	
Grade Intercept	-----	Wooded Area	
Intercept	-----	Grade Elevation	0
Roadway or	-----		
ence	-----		

Town of Menominee

EXCEPTION TO NET & LENGTH
STA 263+62.5 TO STA. 263+76.5

R-14-E

END PROJECT
STA. 346+64
N-497,000 (±200)
E-2,327,500 (±200)

Layout
Scale 0 1 MI.

Total Net Length of Centerline = 6.215 Mi. RURAL

COORDINATES SCALED FROM U.S.G.S TOPOGRAPHIC MAPS,
WHITE LAKE & LANGLADE WISC. QUADRANGLES
FOR IDENTIFICATION ONLY.

RECORD # 20114
LANGLADE COUNTY SURVEYORS OFFICE
DATE FILED: 8/15/94 BY: D. TUSTY

STATE OF WISCONSIN DEPARTMENT OF TRANSPORTATION	
Surveyor <u>R.B.J.</u>	District Checker <u>F.V.S.</u>
Designer <u>E.H.M.</u>	C. O. Checker <u>B.J.E.</u>
District Supervisor <u>P.M.J.</u>	C. O. Coordinator <u>L.A.S.</u>

Approved:
Date 8/23/84 R.B. Schuddeh
District Transportation Director

Approved:
Date 1-30-85 D.J. Strand
Chief Design Engineer

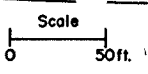
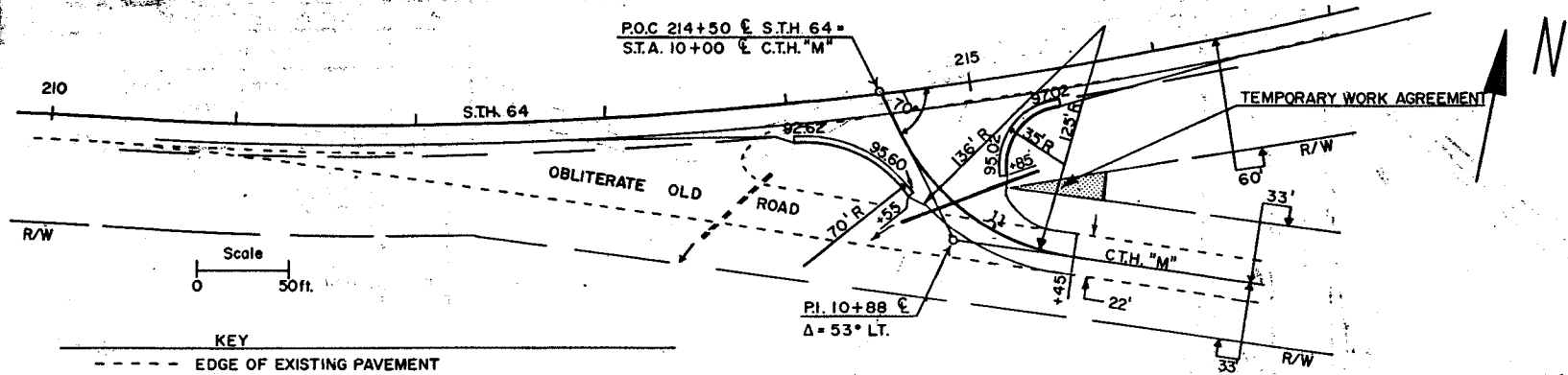
Approved:
Date 2/6/85 E.J. Byrkit
Director of Development

U. S. DEPARTMENT OF TRANSPORTATION
FEDERAL HIGHWAY ADMINISTRATION
REGION 5 WISCONSIN DIVISION

Approved:
Date _____
Division Administrator

STATE PROJECT NUMBER	SHEET NO.
9140-01-71	2.1
DETAIL SHEET FOR	
S.T.H. 64	LANGLADE COUNTY

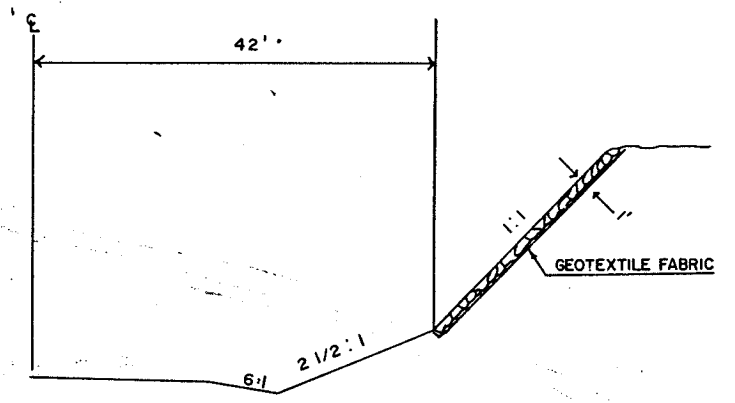
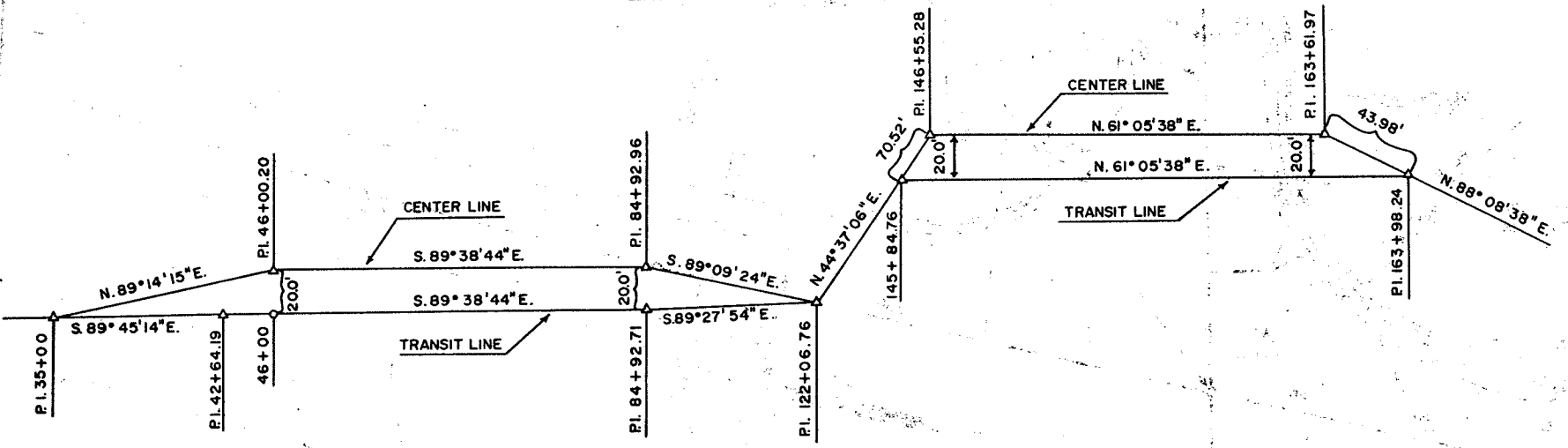
1EE
2



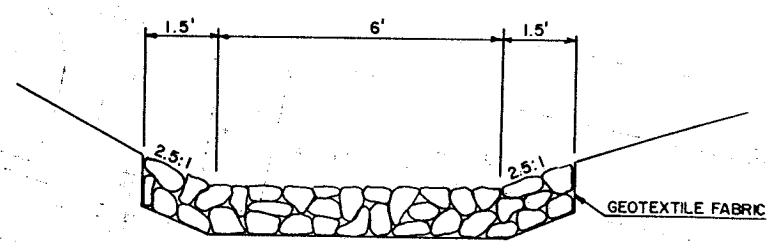
- KEY**
- EDGE OF EXISTING PAVEMENT
 - ==== CONCRETE CURB & GUTTER, 36"-TYPE "D"
 - EDGE OF CRUSHED AGGREGATE BASE COURSE SHOULDER
- ELEVATIONS SHOWN ARE FLANGE LINE

INTERSECTION DETAIL C.T.H. 'M'

ALIGNMENT DETAIL

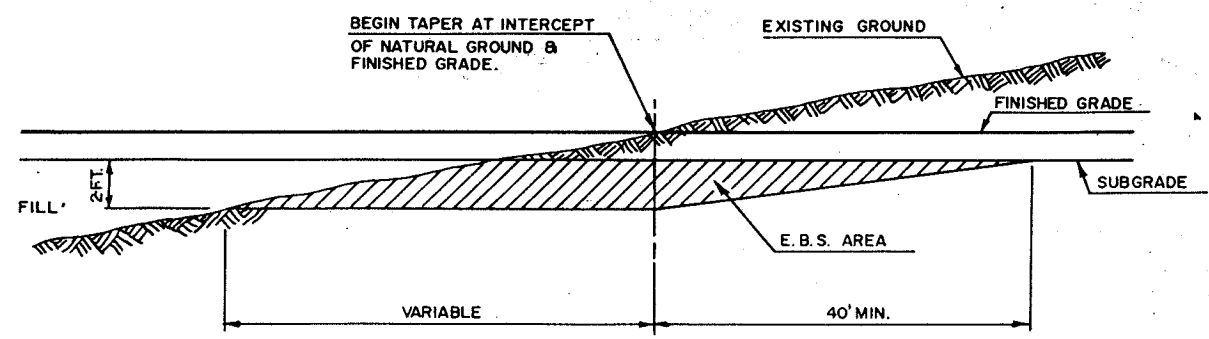


RIP RAP SLOPE
STA. 27+50 - 31+50 RT.

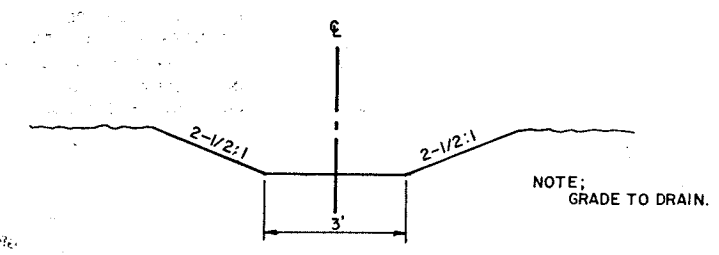


RIPRAP FLUME DETAIL
STA. 32+00 - STA. 33+00 LT. & RT.
STA. 40+50 - STA. 41+00 RT.
STA. 41+00 - STA. 42+00 LT.

NOTE:
EXCAVATE BELOW SUBGRADE ALL MOUTHS OF CUTS. EXACT LOCATIONS AND EXTENT OF EXCAVATION BELOW SUBGRADE (E. B. S.) SHALL BE DETERMINED BY ENGINEER IN THE FIELD. E. B. S. AREA TO BE BACKFILLED WITH MATERIAL ACCEPTABLE TO THE ENGINEER. BACKFILL MUST BE HOMOGENEOUS WITH ADJOINING FILL MATERIAL. THE FILL WITHIN 100-FT. OF THE MOUTH OF THE CUT MUST BE KEPT 2-FT. BELOW SUBGRADE UNTIL E. B. S. IS COMPLETED.



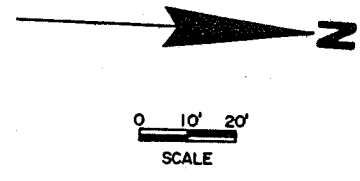
PROFILE AT UNDERCUT LOCATIONS



DRAINAGE DITCH DETAIL, STA. 318+90 LT.
APPROXIMATELY 30 CUBIC YARDS OF EXCAVATION

STATE PROJECT NUMBER	9140-01-71
INTERSECTION DETAIL FOR	S.T.H. 55 AND S.T.H. 64
	LANGLADE CO.

P.I. 290+97.27
 Δ 34°07'49"
 D. 4°00'
 T. 439.71'
 L. 853.26'
 S.E. .050 %
 R.O. 150'



WOLF RIVER

STA. 284+94 30' LT. (S.T.H. 55)
 1-CATCH BASIN TYPE 2F REQ'D
 FLOWLINE ELEV. 1257.30
 INLET ELEV. 1253.00
 DISCHARGE ELEV. 1252.90
 1-24" X 30' R.C.P. CLASS III S.S. REQ'D
 INLET ELEV. 1252.90
 DISCHARGE ELEV. 1252.50
 1-ENDWALL REQ'D

STA. 284+10 C.E. LT. RESTORE

STA. 283+43 C.E. LT. RESTORE

EXISTING PARKING LOT
SALV. TOPSOIL, SEED & FERTILIZE

INCIDENTAL CONST.
DITCH TO DRAIN

ELECTRICAL CONDUIT & PULL BOXES
TO BE INSTALLED BY OTHERS.

P.O.T. 343+73.40 C/L S.T.H. 64=
 P.O.T. 285+22.00 C/L S.T.H. 55

C.P. TO REMAIN

WAYSIDE ENTRANCE

RESTORE BITUMINOUS PAVED AREAS
BEHIND CURB.

STA. 284+53 24' RT. (S.T.H. 55)
 1-CATCH BASIN TYPE 2F REQ'D.
 FLOWLINE ELEV. 1257.50
 DISCHARGE ELEV. 1253.50
 1-24" X 64' R.C.P. CLASS III S.S. REQ'D
 INLET ELEV. 1253.50
 DISCHARGE ELEV. 1253.00

TAV. - REST.

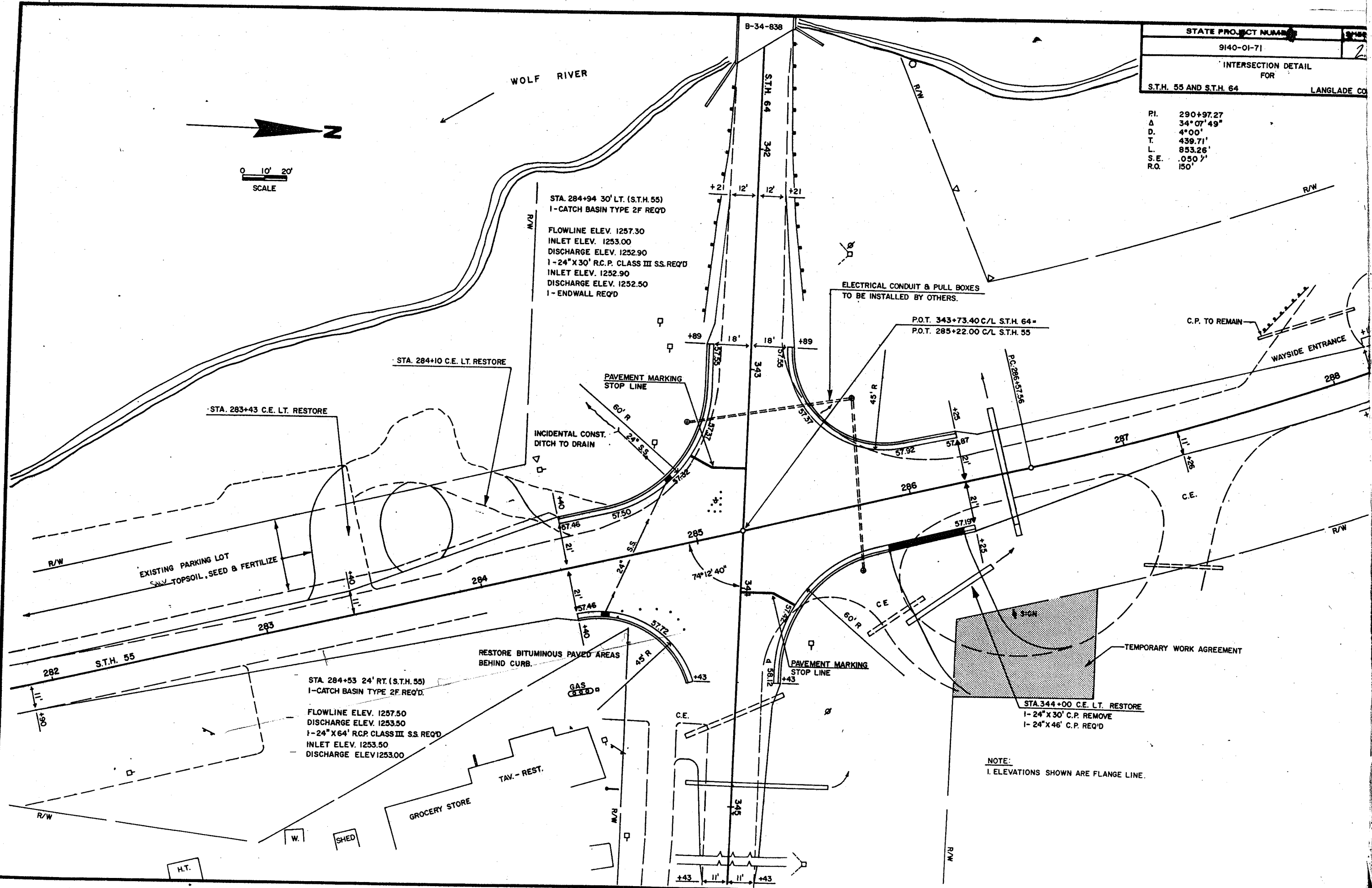
GROCERY STORE

PAVEMENT MARKING
STOP LINE

STA. 344+00 C.E. LT. RESTORE
 1-24" X 30' C.P. REMOVE
 1-24" X 46' C.P. REQ'D

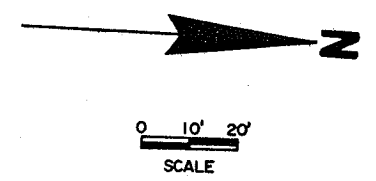
TEMPORARY WORK AGREEMENT

NOTE:
1. ELEVATIONS SHOWN ARE FLANGE LINE.



STATE PROJECT NUMBER	SHEET NO.
9140-01-71	22
INTERSECTION DETAIL FOR	
S.T.H. 55 AND S.T.H. 64	
LANGLADE COUNTY	

P.I. 290+97.27
 Δ 34°07'49"
 D. 4°00'
 T. 439.71'
 L. 853.26'
 S.E. .050 %
 R.O. 150'



WOLF RIVER

STA. 284+94 30' LT. (S.T.H. 55)
 1- CATCH BASIN TYPE 2F REQ'D
 FLOWLINE ELEV. 1257.30
 INLET ELEV. 1253.00
 DISCHARGE ELEV. 1252.90
 1- 24" X 30' R.C.P. CLASS III S.S. REQ'D
 INLET ELEV. 1252.90
 DISCHARGE ELEV. 1252.50
 1- ENDWALL REQ'D

ELECTRICAL CONDUIT & PULL BOXES
 TO BE INSTALLED BY OTHERS.

P.O.T. 343+73.40 C/L S.T.H. 64
 P.O.T. 285+22.00 C/L S.T.H. 55

STA. 283+43 C.E. LT. RESTORE

STA. 284+10 C.E. LT. RESTORE

EXISTING PARKING LOT
 SAW TOPSOIL, SEED & FERTILIZE

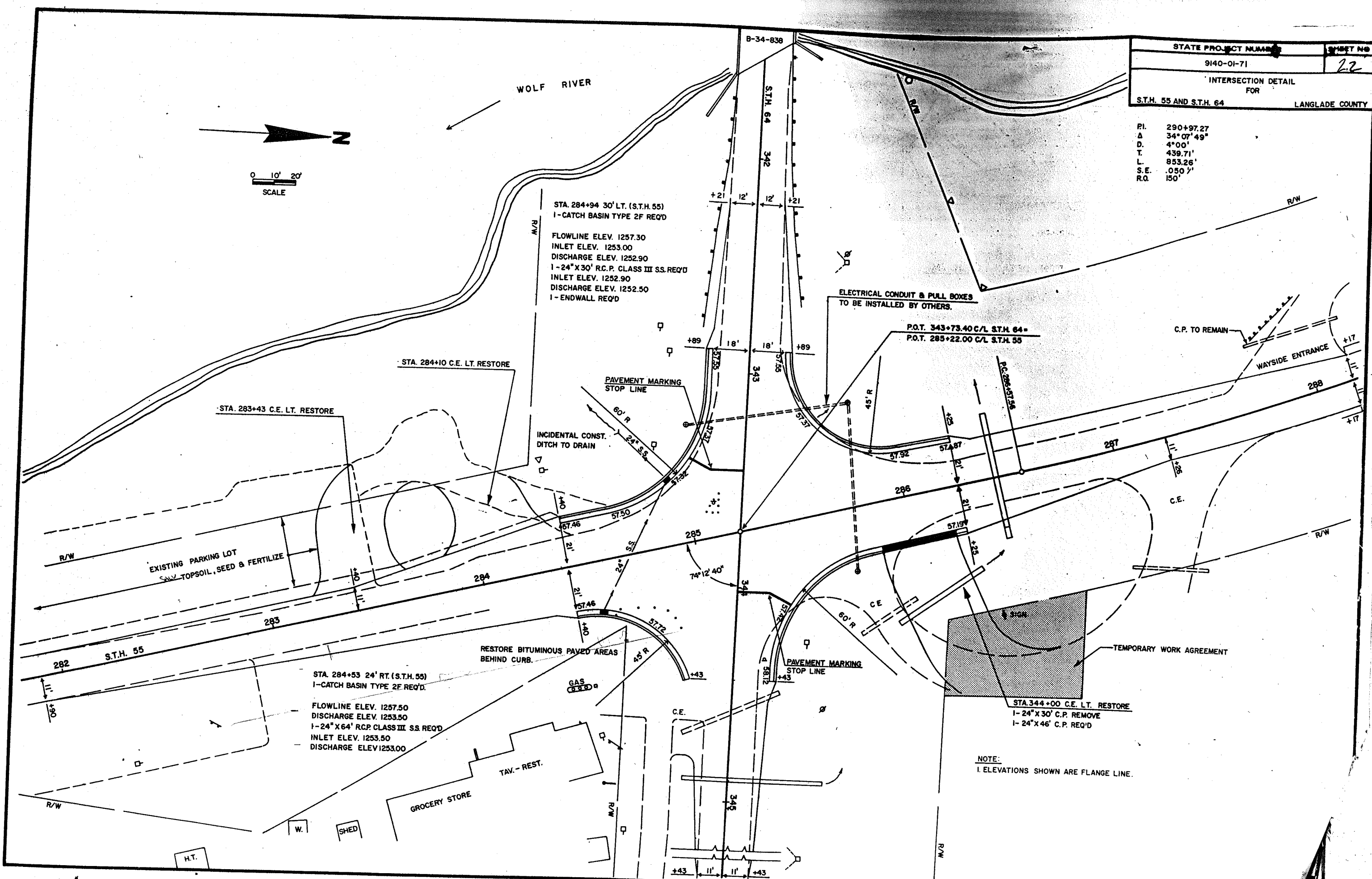
INCIDENTAL CONST.
 DITCH TO DRAIN

RESTORE BITUMINOUS PAVED AREAS
 BEHIND CURB.

STA. 284+53 24' RT. (S.T.H. 55)
 1- CATCH BASIN TYPE 2F REQ'D
 FLOWLINE ELEV. 1257.50
 DISCHARGE ELEV. 1253.50
 1- 24" X 64' RCP CLASS III S.S. REQ'D
 INLET ELEV. 1253.50
 DISCHARGE ELEV. 1253.00

STA. 344+00 C.E. LT. RESTORE
 1- 24" X 30' C.P. REMOVE
 1- 24" X 46' C.P. REQ'D

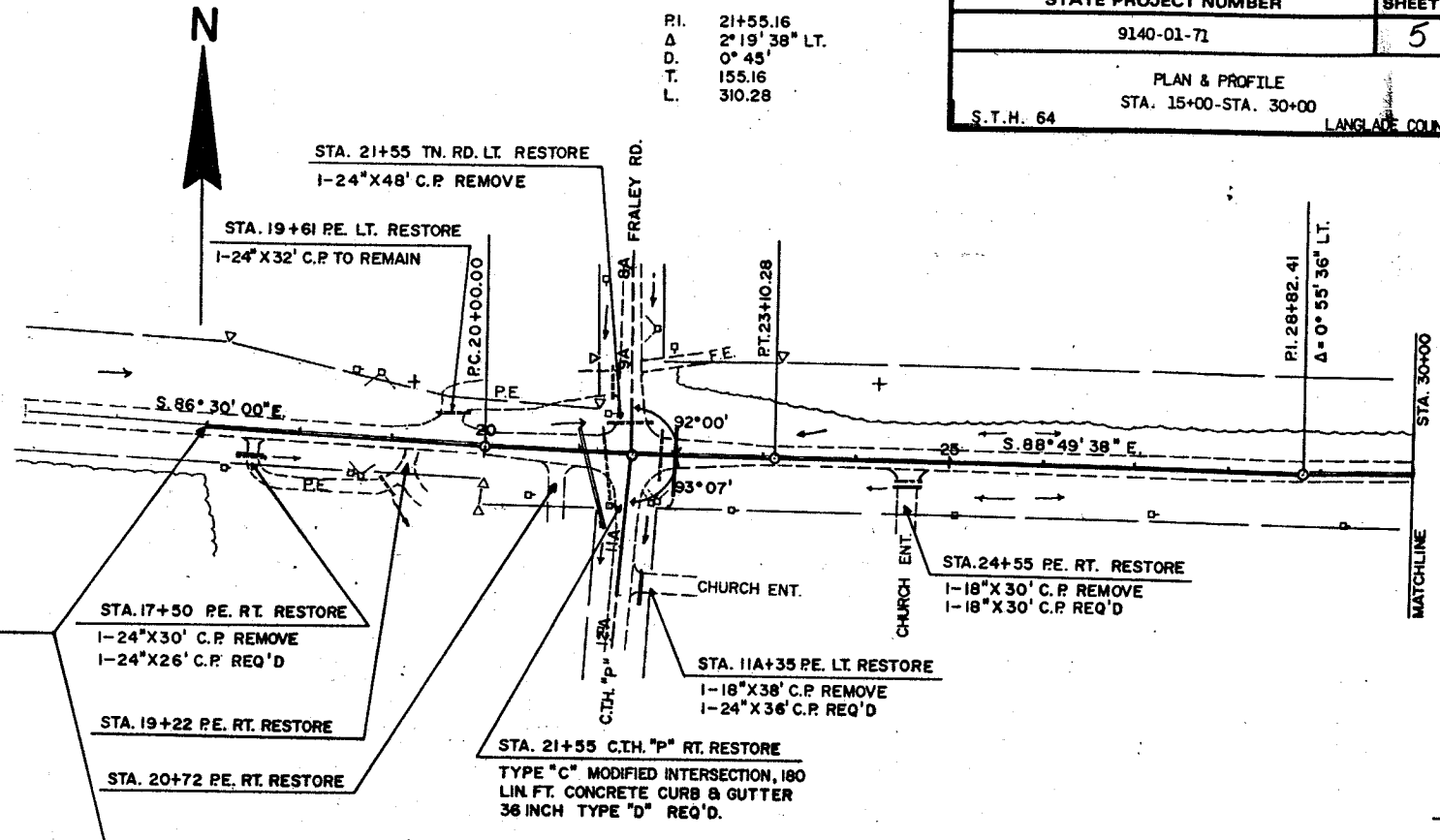
NOTE:
 1. ELEVATIONS SHOWN ARE FLANGE LINE.



STATE PROJECT NUMBER	SHEET NO.
9140-01-71	5
PLAN & PROFILE	
STA. 15+00-STA. 30+00	
S.T.H. 64	LANGLADE COUNTY

P.I. 21+55.16
 Δ 2°19'38" LT.
 D. 0°45'
 T. 155.16
 L. 310.28

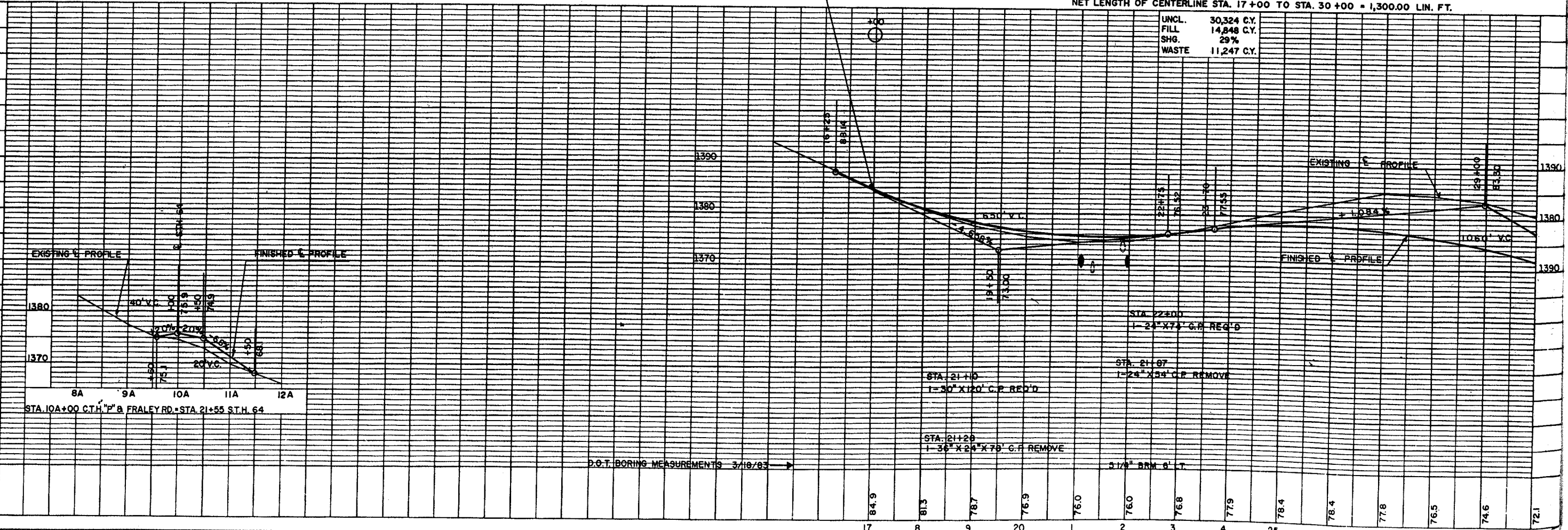
BEGIN PROJECT 9140-01-71
STA. 17+00



NO. STATION		BENCH MARKS DESCRIPTION		ELEV.
1	19+95	LAG IN 13" N. PINE	75' RT.	1371.80
2	32+20	SPIKE IN 13" MAPLE	45' LT.	1369.57

NET LENGTH OF CENTERLINE STA. 17+00 TO STA. 30+00 = 1,300.00 LIN. FT.

UNCL.	30,324 C.Y.
FILL	14,848 C.Y.
SHG.	29%
WASTE	11,247 C.Y.



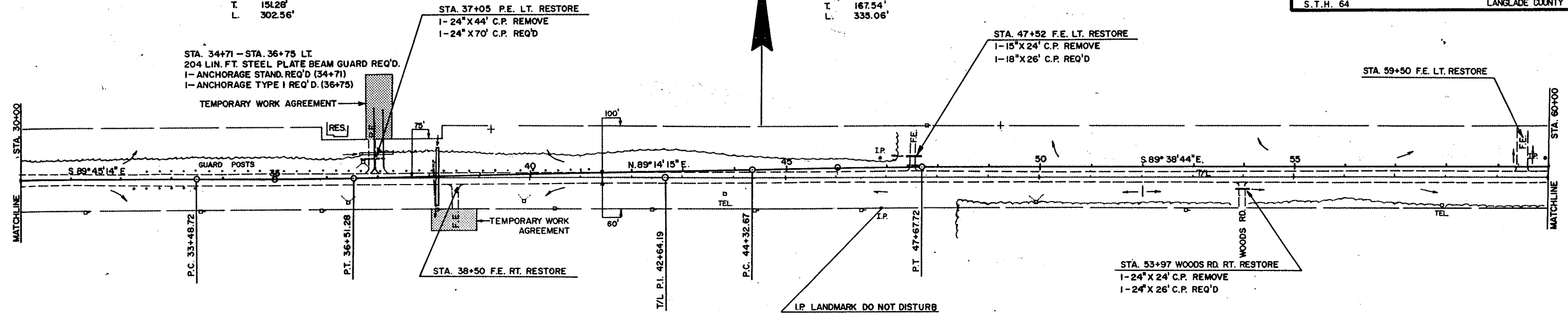
D.O.T. BORING MEASUREMENTS 3/18/83

3 1/2\"/>

STATE PROJECT NUMBER	SHEET NO.
9140-01-71	51
PLAN & PROFILE	
STA. 30+00-STA. 60+00	
S.T.H. 64	LANGLADE COUNTY

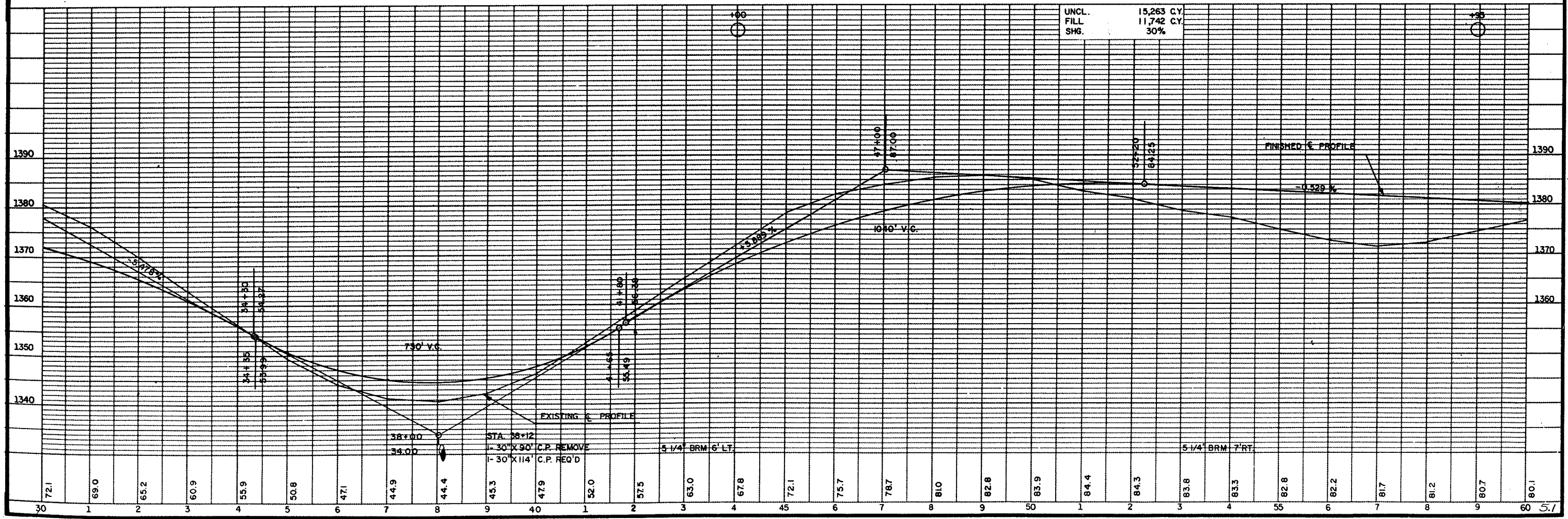
P.I. 35+00
 Δ 1°0'31" LT.
 D. 0°20'
 T. 151.28'
 L. 302.56'

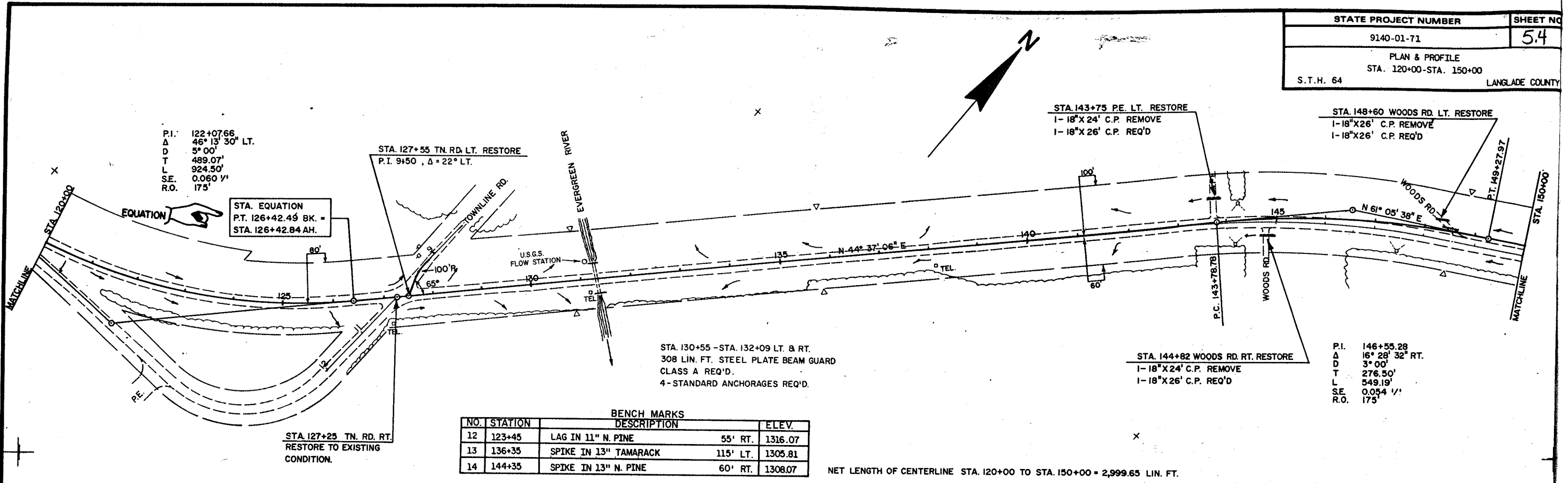
P.I. 46+00.2
 Δ 1°07'01" RT.
 D. 0°20'
 T. 167.54'
 L. 335.06'



BENCH MARKS			
NO.	STATION	DESCRIPTION	ELEV.
2	32+20	SPIKE IN 13" MAPLE	45' LT. 1369.57
3	41+10	SPIKE IN 11" MAPLE	35' LT. 1350.34
4	53+25	LAG IN 16" N. PINE	70' RT. 1379.33

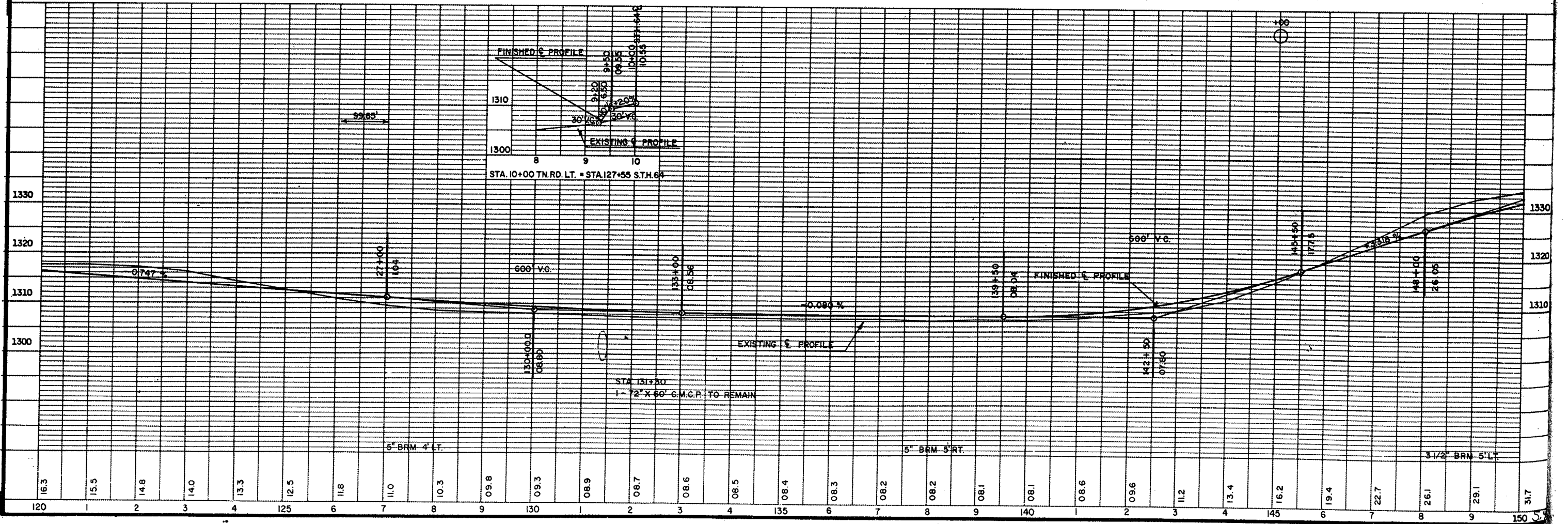
NET LENGTH OF CENTERLINE STA. 30+00 TO STA. 60+00 = 3,000 LIN. FT.



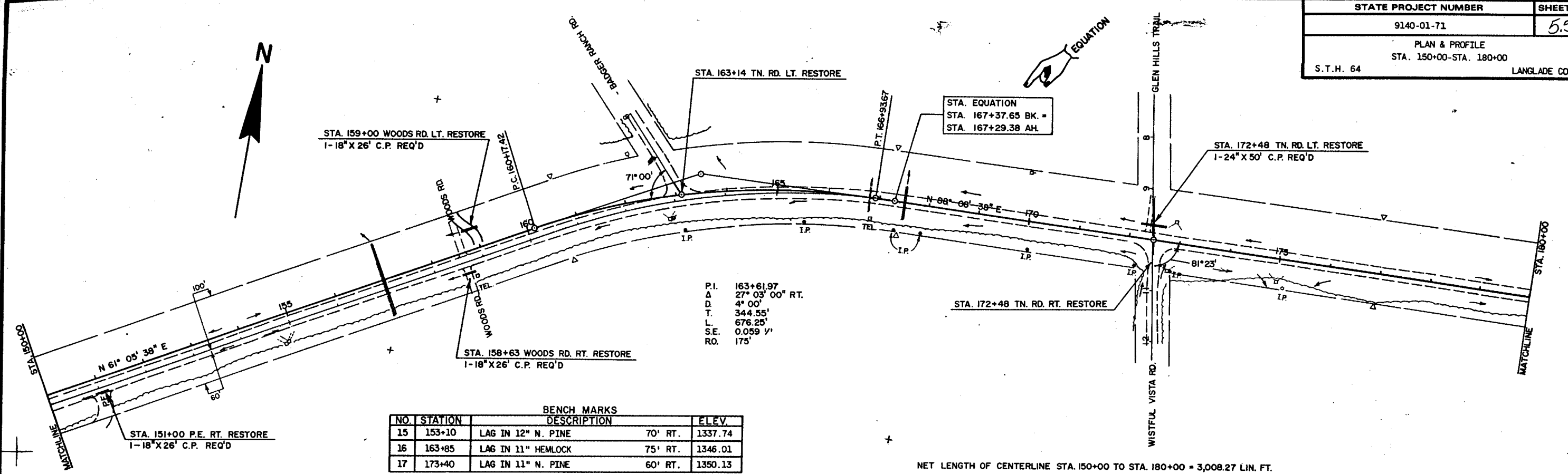


BENCH MARKS				
NO.	STATION	DESCRIPTION		ELEV.
12	123+45	LAG IN 11" N. PINE	55' RT.	1316.07
13	136+35	SPIKE IN 13" TAMARACK	115' LT.	1305.81
14	144+35	SPIKE IN 13" N. PINE	60' RT.	1308.07

NET LENGTH OF CENTERLINE STA. 120+00 TO STA. 150+00 = 2,999.65 LIN. FT.

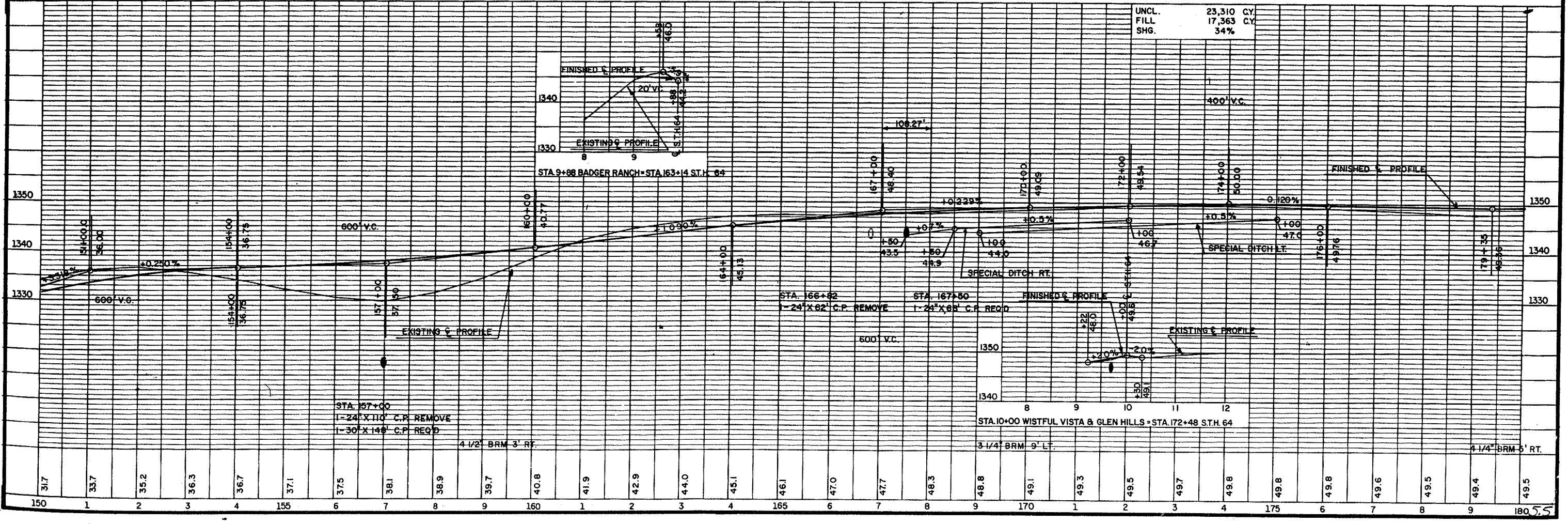


STATE PROJECT NUMBER	SHEET NO.
9140-01-71	5.5
PLAN & PROFILE	
STA. 150+00-STA. 180+00	
S.T.H. 64	LANGLADE COUNTY



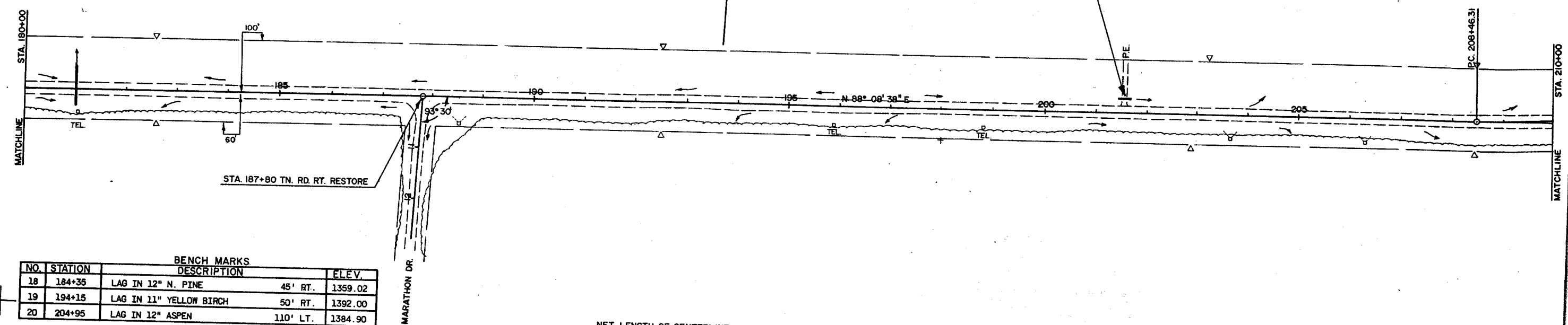
BENCH MARKS			
NO.	STATION	DESCRIPTION	ELEV.
15	153+10	LAG IN 12" N. PINE	70' RT. 1337.74
16	163+85	LAG IN 11" HEMLOCK	75' RT. 1346.01
17	173+40	LAG IN 11" N. PINE	60' RT. 1350.13

NET LENGTH OF CENTERLINE STA. 150+00 TO STA. 180+00 = 3,008.27 LIN. FT.



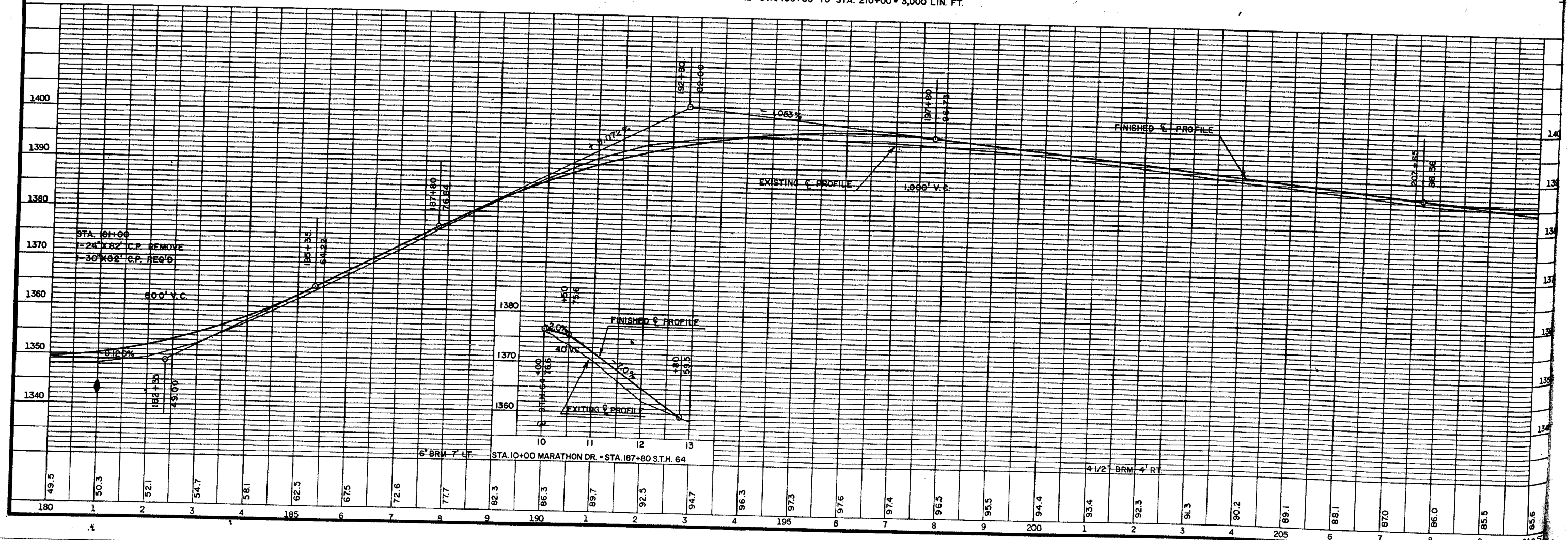


STA. 201+55 P.E. LT. RESTORE
 1-18"X16' C.P. REMOVE
 1-18"X26' C.P. REQ'D



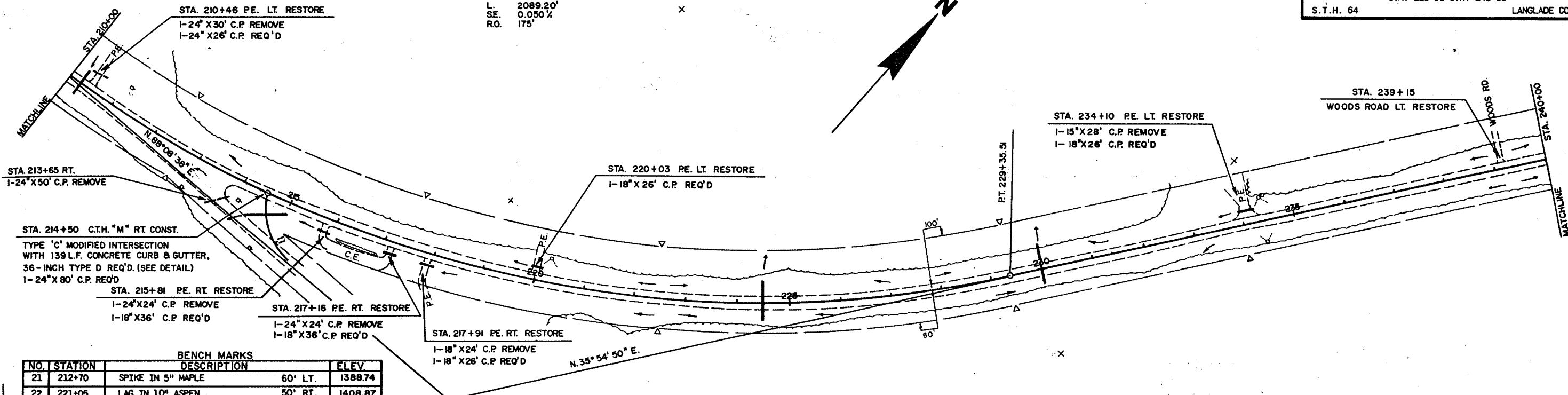
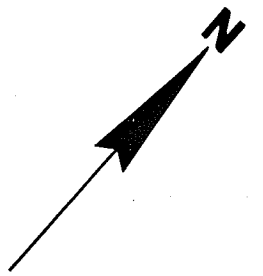
NO.	STATION	BENCH MARKS DESCRIPTION	ELEV.
18	184+35	LAG IN 12" N. PINE 45' RT.	1359.02
19	194+15	LAG IN 11" YELLOW BIRCH 50' RT.	1392.00
20	204+95	LAG IN 12" ASPEN 110' LT.	1384.90

NET LENGTH OF CENTERLINE STA. 180+00 TO STA. 210+00 = 3,000 LIN. FT.



STATE PROJECT NUMBER	SHEET NO.
9140-01-71	57
PLAN & PROFILE	
STA. 210+00-STA. 240+00	
S.T.H. 64	LANGLADE COUNTY

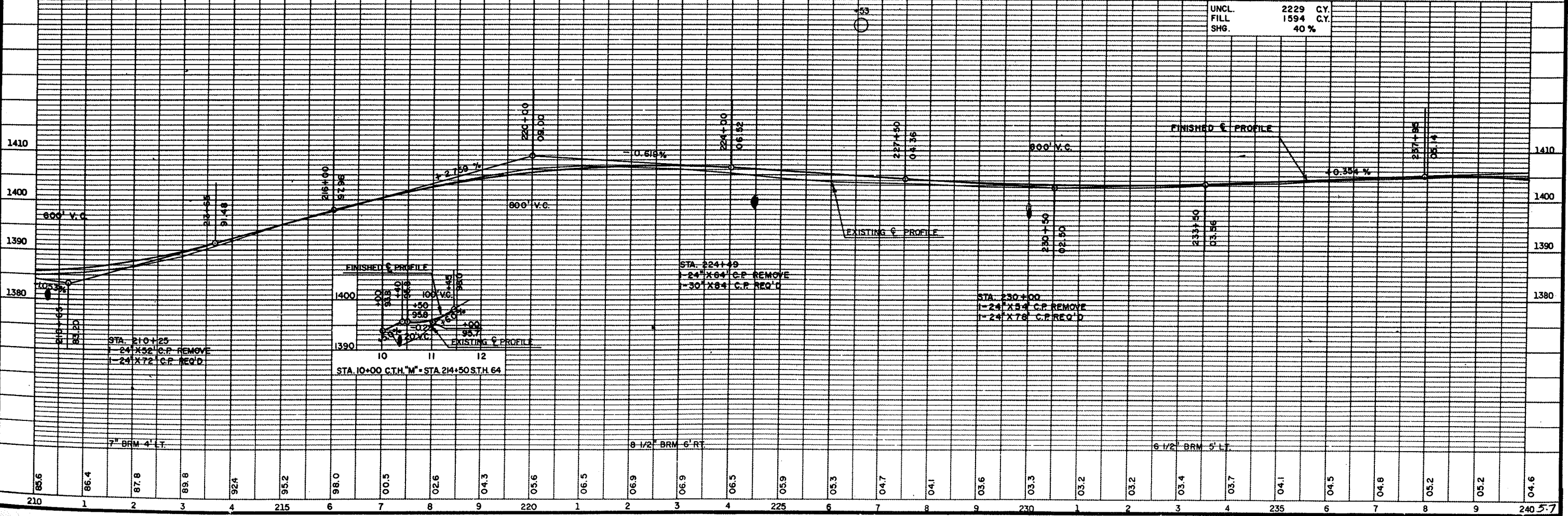
P.I. 219+69.81
 Δ 52° 13' 48" LT.
 D. 2° 30'
 T. 1123.50'
 L. 2089.20'
 S.E. 0.050 %
 R.O. 175'

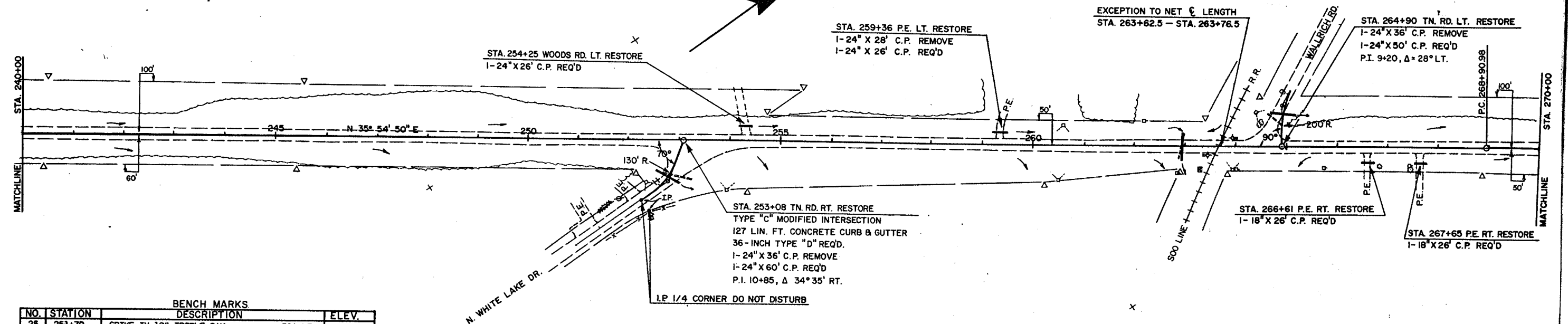
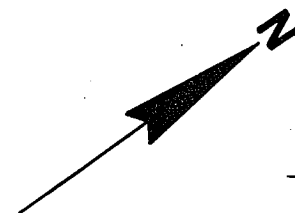


NO.	STATION	DESCRIPTION	ELEV.
21	212+70	SPIKE IN 5" MAPLE 60' LT.	1388.74
22	221+05	LAG IN 10" ASPEN 50' RT.	1408.87
23	230+75	SPIKE IN 8" MAPLE 45' LT.	1399.42
24	238+10	SPIKE IN 8" MAPLE 55' LT.	1404.44

NET LENGTH OF CENTERLINE STA. 210+00 TO STA. 240+00 = 3000 LIN. FT.

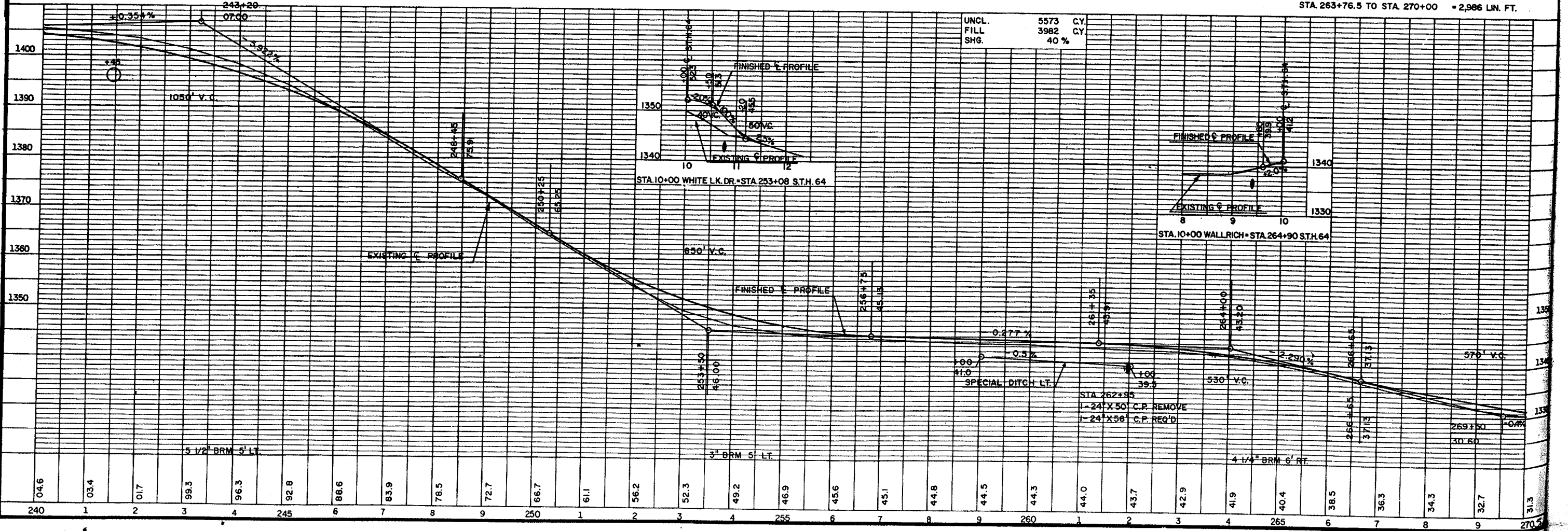
UNCL. FILL SHG.	2229 C.Y.
	1594 C.Y.
	40 %



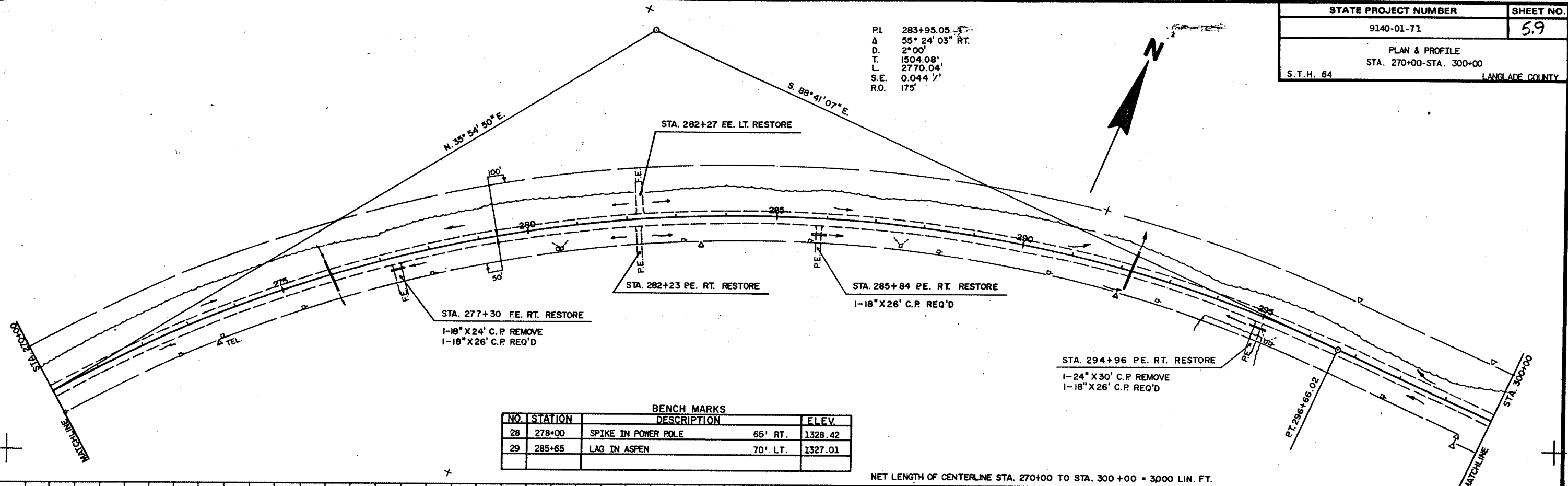


NO.	STATION	BENCH MARKS DESCRIPTION	ELEV.
25	251+70	SPIKE IN 12" TRIPLE OAK	50' LT. 1358.83
26	258+40	SPIKE IN 14" OAK	55' LT. 1343.49
27	268+80	LAG IN 6" W. PINE	80' LT. 1330.64

NET LENGTH OF CENTERLINE STA. 240+00 TO STA. 263+62.5 &
 STA. 263+76.5 TO STA. 270+00 = 2,986 LIN. FT.

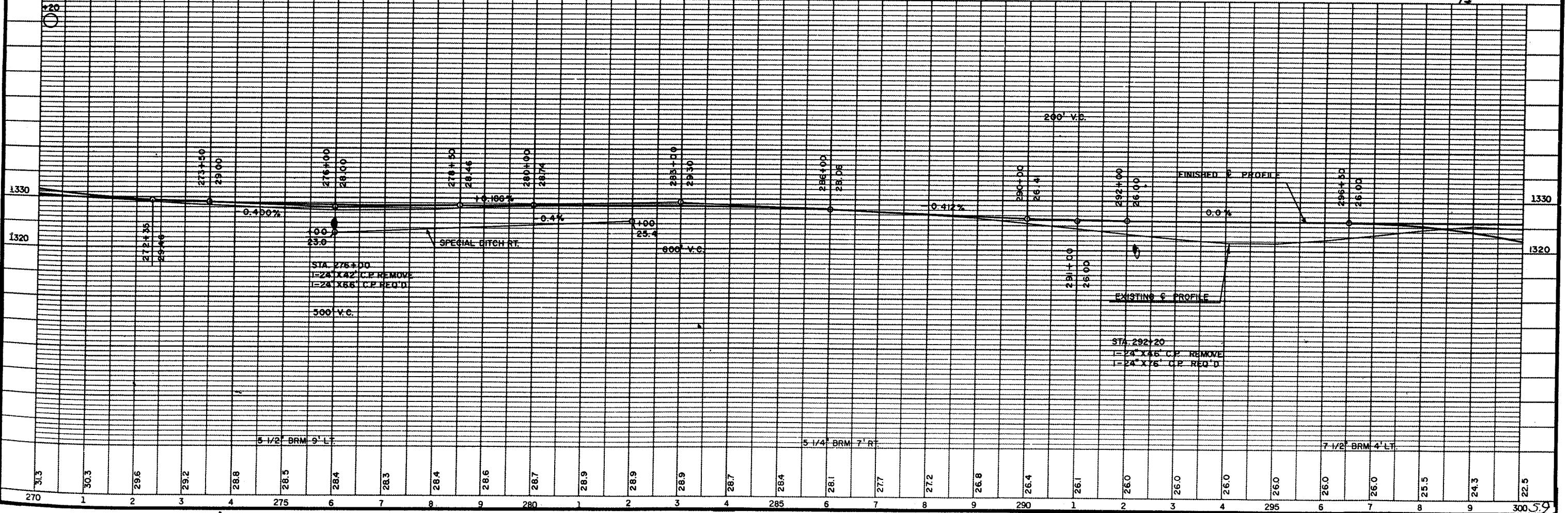


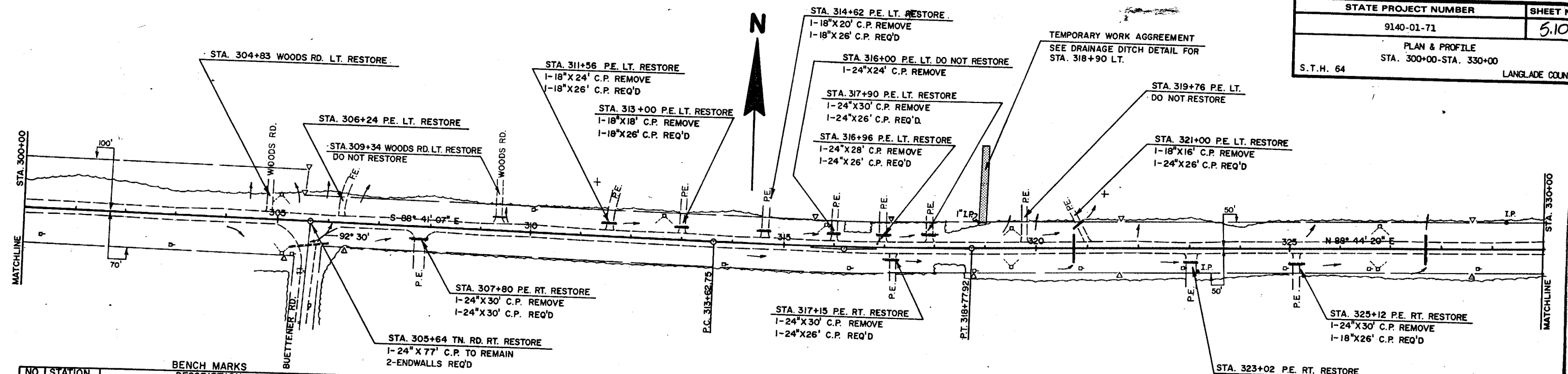
P.I. 283+95.05
 Δ 55° 24' 03" RT.
 D. 2° 00'
 T. 1504.08'
 L. 2770.04'
 S.E. 0.044 1/1
 R.O. 175'



BENCH MARKS			
NO.	STATION	DESCRIPTION	ELEV.
28	278+00	SPIKE IN POWER POLE 65' RT.	1328.42
29	285+65	LAG IN ASPEN 70' LT.	1327.01

NET LENGTH OF CENTERLINE STA. 270+00 TO STA. 300+00 = 3000 LIN. FT.

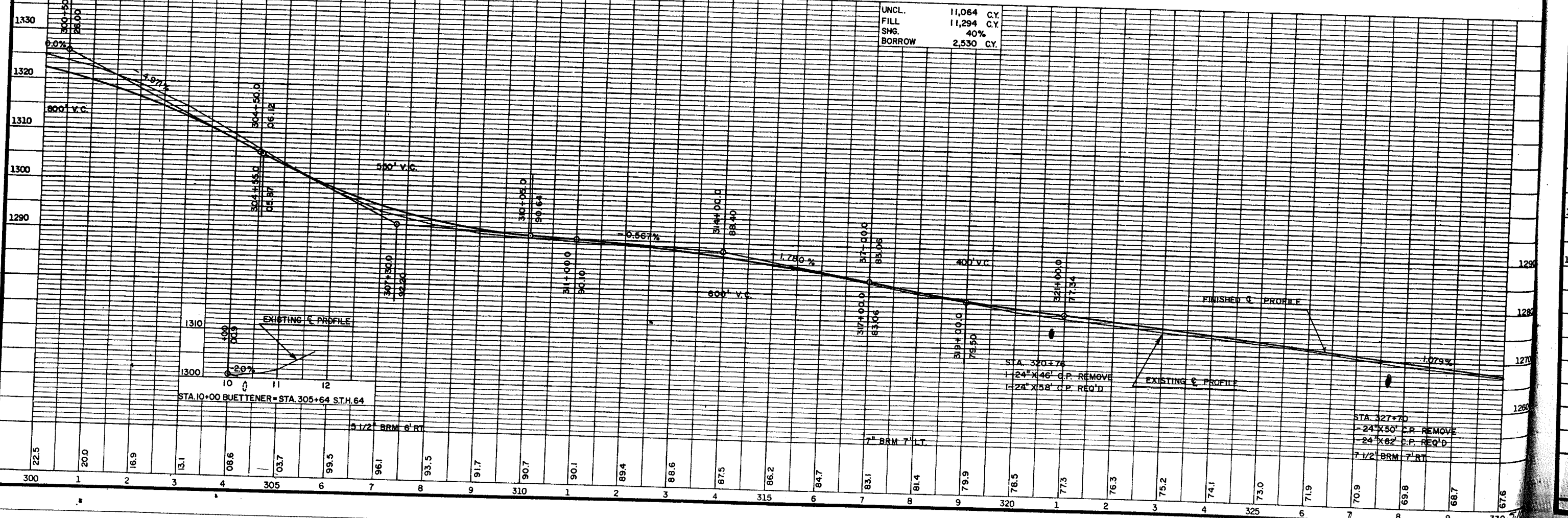




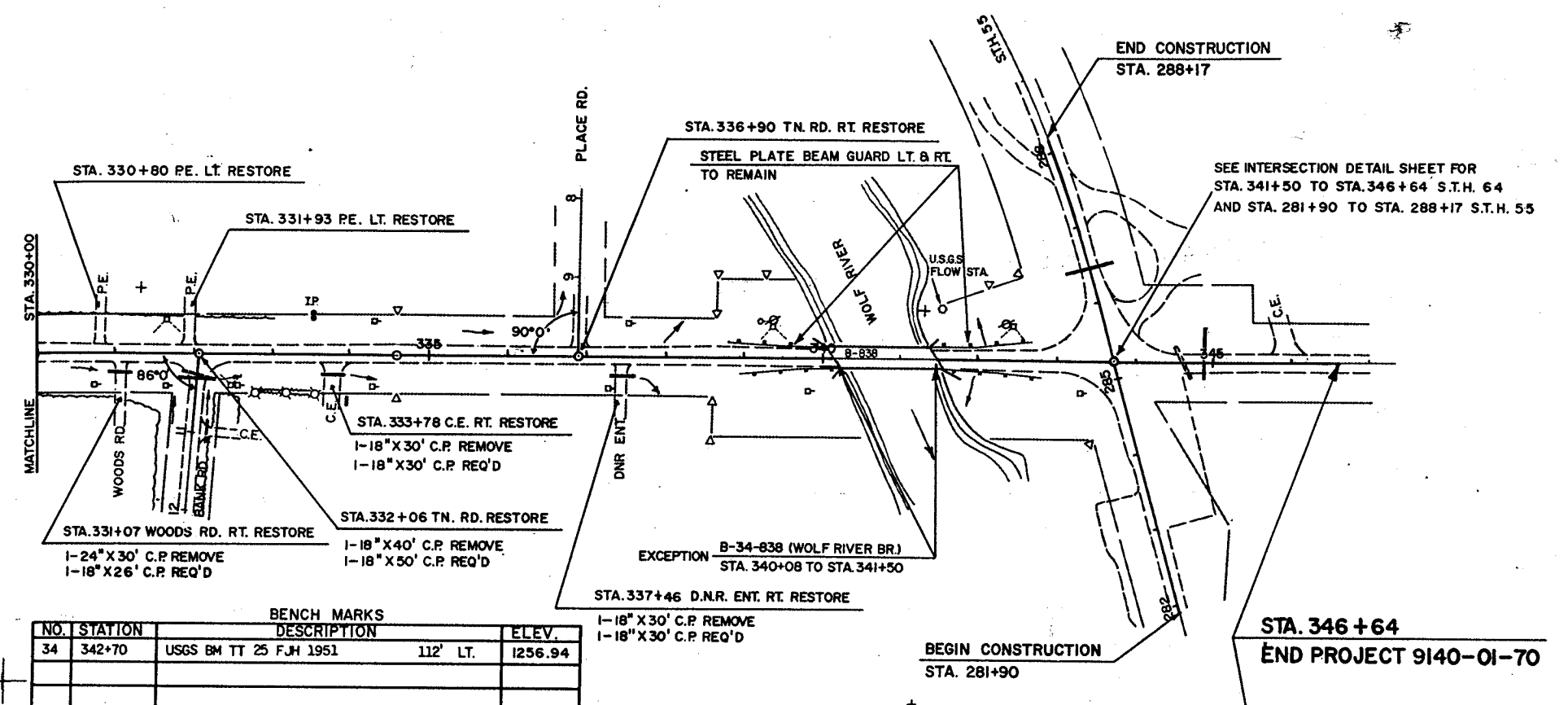
BENCH MARKS			
NO.	STATION	DESCRIPTION	ELEV.
31	305+00	SPIKE IN 6" ELM	40' LT. 1302.73
32	316+50	LAG IN 4" N PINE	35' LT. 1284.50
33	327+85	SPIKE IN 14" MAPLE	60' RT. 1269.40

P.I. 316+20.37
 Δ 2° 34' 33" LT.
 D 0° 30'
 T 257.63'
 L 515.17'
 S.E. N.C.

NET LENGTH OF CENTERLINE STA. 300+00 TO STA. 330+00 = 3,000 LIN. FT.



STATE PROJECT NUMBER	SHEET NO.
9140-01-71	5.11
PLAN & PROFILE	
STA. 330+00-STA. 347+00	
S.T.H. 64	LANGLADE COUNTY



BENCH MARKS			
NO.	STATION	DESCRIPTION	ELEV.
34	342+70	USGS BM TT 25 FJH 1951 112' LT.	1256.94

BEGIN CONSTRUCTION
STA. 281+90

STA. 346+64
END PROJECT 9140-01-70

NET LENGTH OF CENTERLINE STA. 330+00 TO STA. 346+64 = 1,522.0 LIN. FT.

UNCL. 2404 C.Y.
FILL 134 C.Y.
SHG. 40%
HAUL TO STA. 270+20-340+08 2217 C.Y.

