

S.T.H. 64

Job For 19-88

STATE PROJECT	FEDERAL PROJECT	
	PROJECT	CONTRACT
9140-02-71	F 036(34)	1

STATE OF WISCONSIN DEPARTMENT OF TRANSPORTATION

PLAN OF PROPOSED IMPROVEMENT

U.S.H. 45 — C.T.H. 'BB'

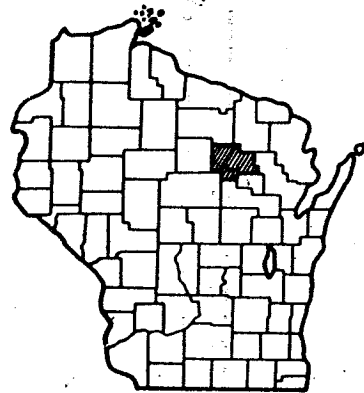
ST.H. 64

LANGLADE COUNTY

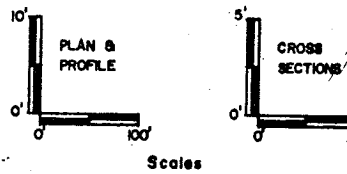
Index of Sheets

- Sheet No. 1 Title
- Sheet No. 2-2.2 Typical Sections and Details
- Sheet No. 3-3.1 Estimate of Quantities
- Sheet No. 3A Miscellaneous Quantities
- Sheet No. 4-4.9 Right of Way Plat
- Sheet No. 5-5.6 Plan and Profile
- Sheet No. 6-6.11 Standard Detail Drawings
- Sheet No. - Standard Sign Plates
- Sheet No. - Structure Plans
- Sheet No. 9-9.6 Computer Earthwork Data
- Sheet No. 27-245 Cross Sections

TOTAL SHEETS = 83



STATE PROJECT NUMBER
9140-02-71



EXCEPTION TO NET C LENGTH
STA. 72+18 — STA. 72+46

Design Designation

- A.D.T. (1986) = 3900
- A.D.T. (2006) = 4700
- D.H.V. = 564
- D. = 60-40
- T. = 8%
- V. = 55 MPH

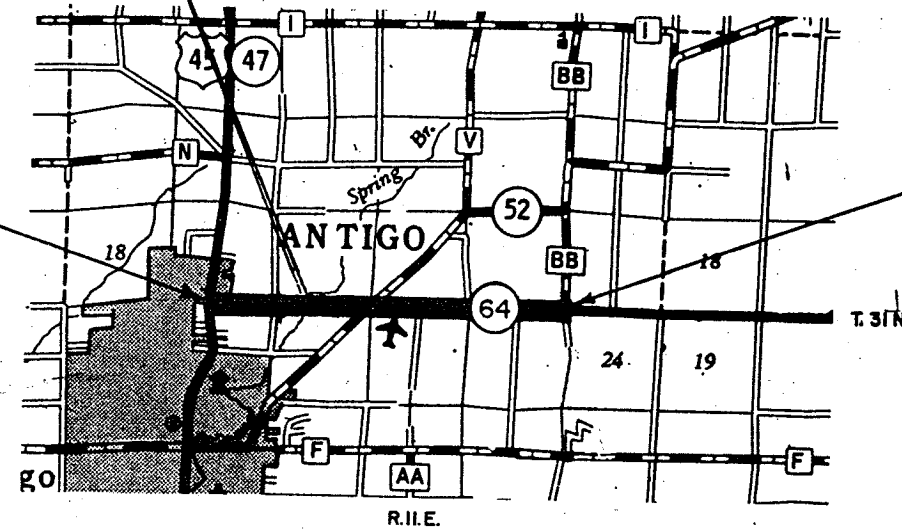
Conventional Signs

- County Line
- Township or Range Line
- Section Line
- Corporate or City Limits
- Property line
- Lot Line
- Existing Right of Way Line
- New Right of Way Line
- Base or Survey Line
- Slope Intercept
- Existing Roadway or Private Entrance

- Caution Symbol (Combustible fluids under pressure)
- Railroads
- Fence
- Culverts in Place
- Culverts Required
- Power Pole
- Telephone or Telegraph Pole
- Right of Way Markers
- Marsh
- Wooded Area
- Grade Elevation

BEGIN PROJECT
STA 21+62
X: 2,219,829.56
Y: 485,604.40

END PROJECT
STA. 217 + 45.67



Layout
Scale 0 1 MI

Total Net Length of Centerline = 3.704 Mi. RURAL

* ALL COORDINATES SHOWN ON THIS PLAN ARE REFERENCED TO THE WISCONSIN COORDINATE SYSTEM, CENTRAL ZONE.

RECORD # 20119
LANGLADE COUNTY SURVEYORS OFFICE
DATE FILED: 2/21/95 BY: D. Teusty

STATE OF WISCONSIN
DEPARTMENT OF TRANSPORTATION

Surveyor J.R.W. District Checker P.H.
Designer W.E.S. C.O. Checker P.H.
District Supervisor P.M.J. C.O. Coordinator P.H.

Approved: _____
Date 2-3-87
DISTRICT TRANSPORTATION DIRECTOR

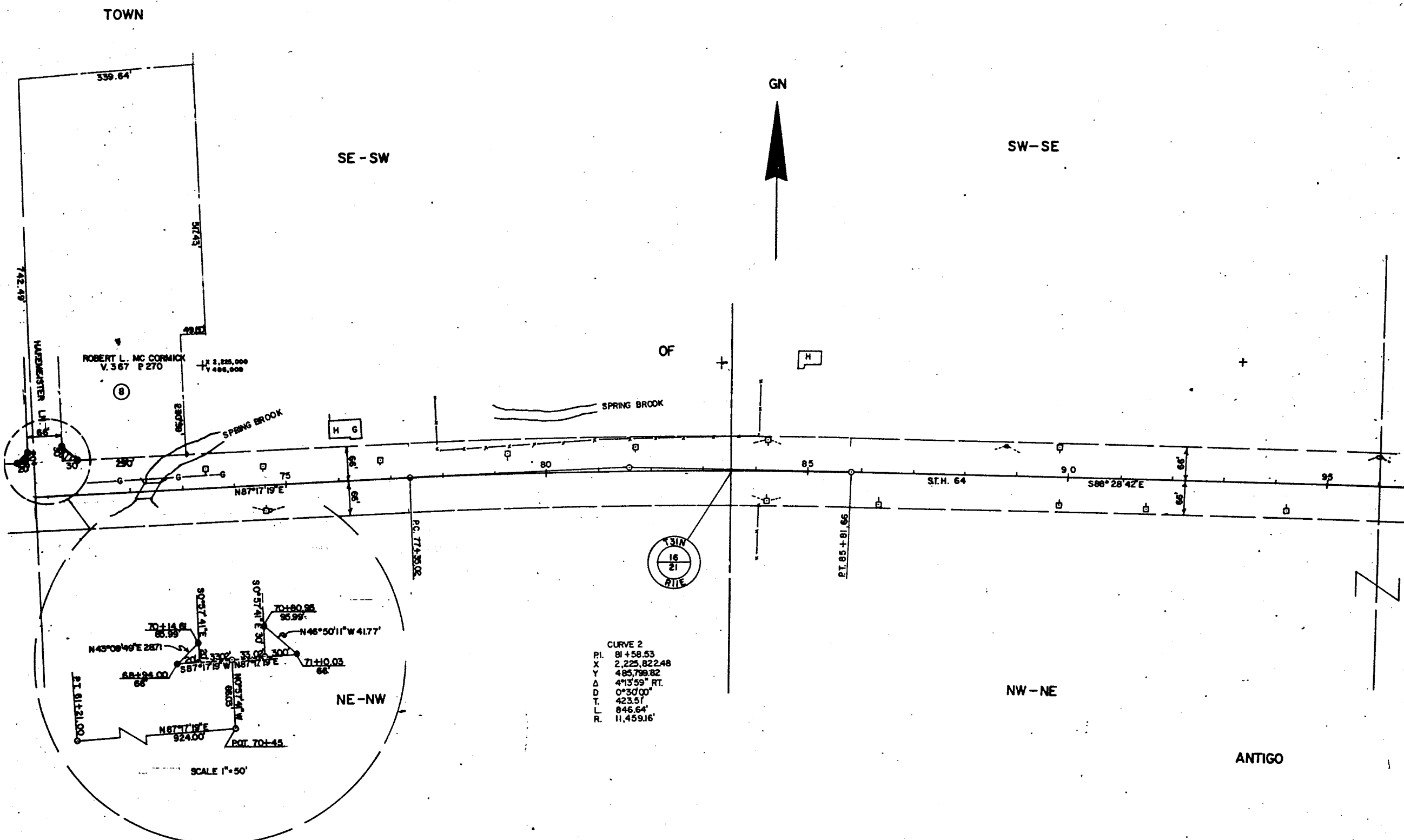
Approved: _____
Date 9/25/87
Actg. STATE DESIGN ENGINEER FOR HWY.

Approved: _____
Date 9/26/87
DIRECTOR OF ENGINEERING DEVELOPMENT

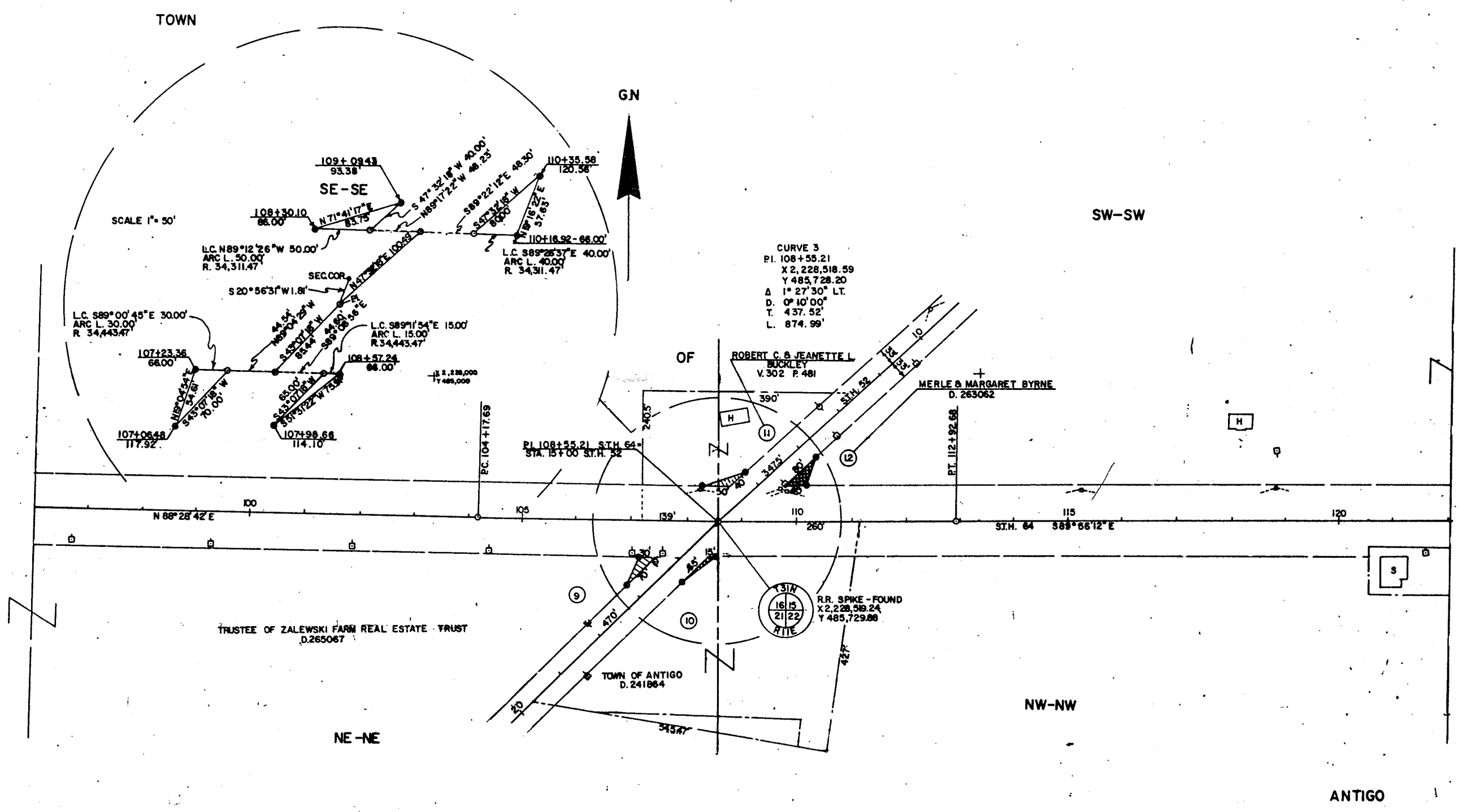
U.S. DEPARTMENT OF TRANSPORTATION
FEDERAL HIGHWAY ADMINISTRATION
REGION 5 WISCONSIN DIVISION

Approved: _____
Date _____

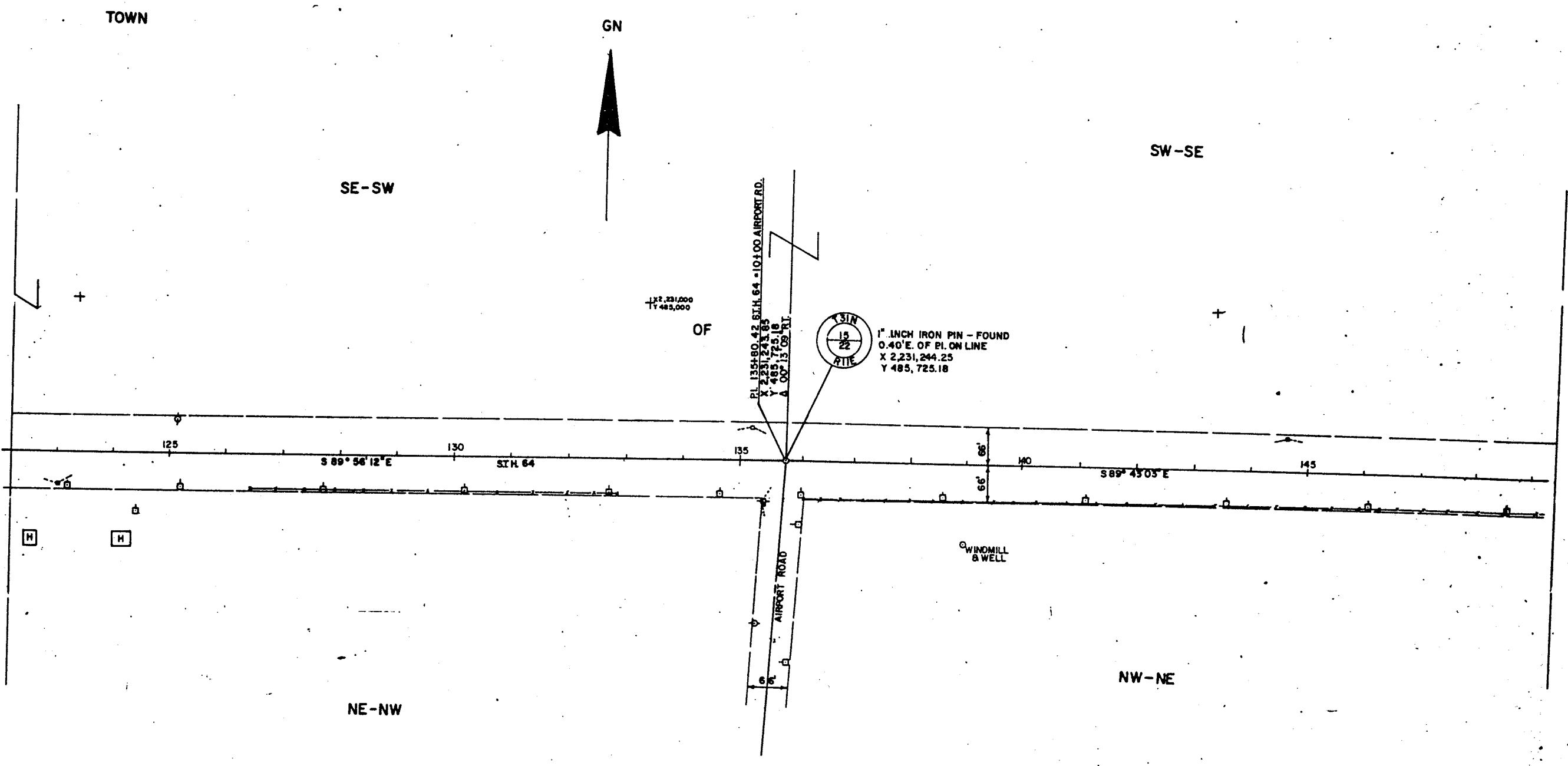
REVISION DATE	ROUTE	COUNTY	DATE	R/W PROJECT NUMBER	SHEET NUMBER
	STH. 64	LANGLADE	7-29-87	940-02-21	
	SCALE FT. 100 200			GRID FACTOR 1.000095	FEDERAL PROJECT NUMBER
				9140-2-71	44



REVISION DATE	ROUTE	COUNTY	DATE	R/W PROJECT NUMBER	SHEET NUMBER
	STH. 64	LANGLADE	7-29-87	9140-02-21	45
	SCALE, FT. 0 100 200	GRID FACTOR		FEDERAL PROJECT NUMBER	
		1.000096		9140-2-71	4.5



REVISION DATE	ROUTE	COUNTY	DATE	R/W PROJECT NUMBER	SHEET NUMBER
	ST.H. 64	LANGLADE	7-29-87	9140-02-21	
	SCALE FT. 0 100 200			FEDERAL PROJECT NUMBER	
			GRID FACTOR 1.000095	9140-2-71	48



ANTIGO

REVISION DATE

ROUTE STH. 64	COUNTY LANGLADE	DATE 7-29-87
SCALE, FT. 0 100 200		GRID FACTOR 1.000095

R/W PROJECT NUMBER 9140-02-21	SHEET NUMBER 4.7
FEDERAL PROJECT NUMBER 9140-2-71	

TOWN

SE - SE

GN



CURVE 4
 PL 163+02.47
 X 2,233,965.87
 Y 485,711.76
 A 0° 43' 35" LT.
 D. 0° 10' 00"
 T 217.94'
 L. 435.88'

SCALE 1" = 50'

PATRICK H. & MARGARET ANNE DIERCKS
 V. 261 P. 204

OF

CARL & LUCILLE PARSONS
 V. 273 P. 238

DOI PK NAIL SET OVER 1" IRON PIN
 X 2,233,965.87
 Y 485,711.76

NE - NE

NW - NW

ANTIGO

REVISION DATE	ROUTE ST.H. 64	COUNTY LANGLADE	DATE 7-29-87	R/W PROJECT NUMBER 9140-02-21	SH. NUM. 41
	SCALE FT. 0 100 200	GRID FACTOR 1.000095		FEDERAL PROJECT NUMBER 9140-2-71	42

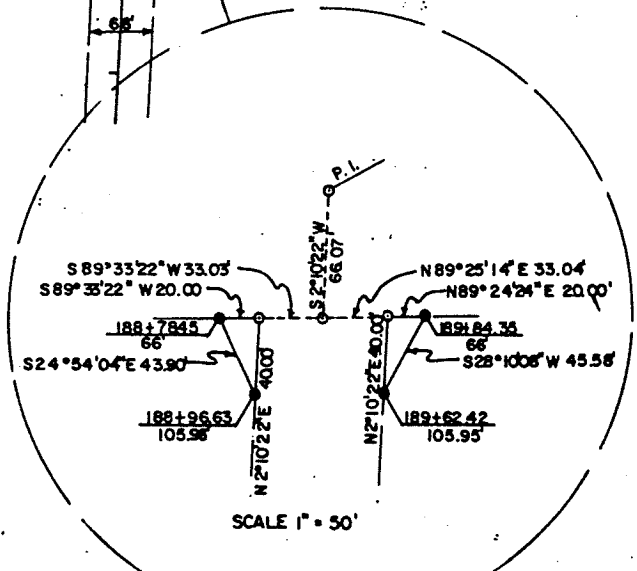
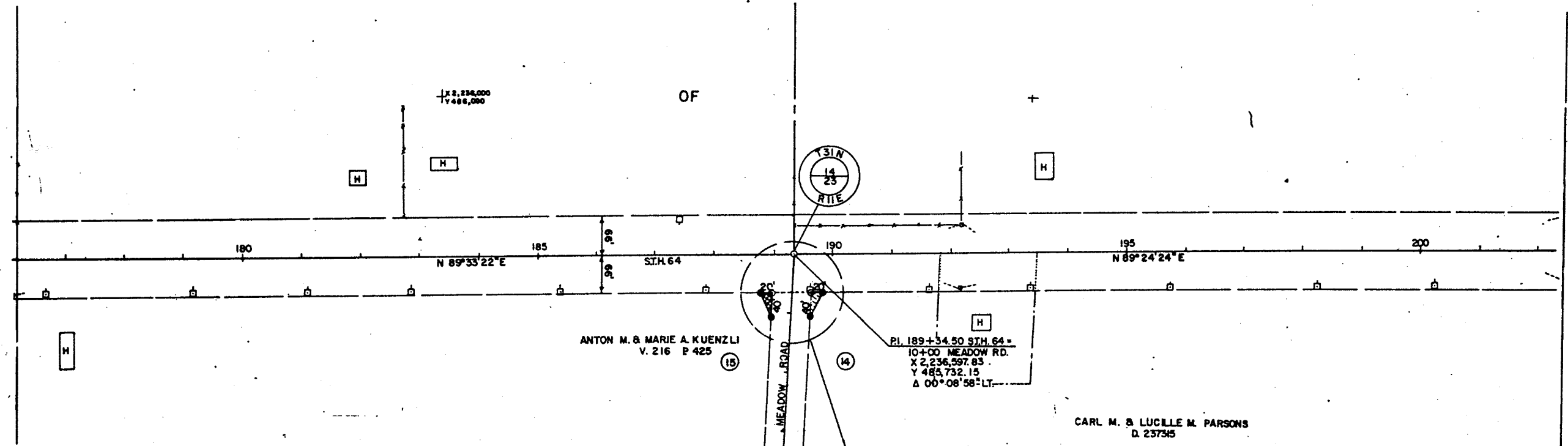
TOWN

GN

SE-SW

SW-SE

OF



NE-NW

NW-NE

ANTIGO

REVISION DATE

ROUTE	COUNTY	DATE
STH. 64	LANGLADE	7-29-87
SCALE, FT.	GRID FACTOR	
0 100 200	1.0000 95	

R/W PROJECT NUMBER	SHEET NUMBER
9140-02-21	49
FEDERAL PROJECT NUMBER	
9140-2-71	49

TOWN

GN

SE-SE

SW-SW

X 2,239,000
Y 485,000

FULL GOSPEL
COMMUNITY CHURCH
PAT POWELL ET AL
TRUSTEES
D. 244580

OF

SCALE 1" = 50'

PI 215+55.67 STH. 64-15+00 C.T.H. "BB"
 X 2,239,218.85
 Y 485,759.30
 Δ 1°08' RT.
 END RELOCATION ORDER

NW-NW

NE-NE